

**2021 No. 982**

**HIGHWAYS, ENGLAND**

**The Leeds City Council (Sovereign Street Bridge) Scheme 2021  
Confirmation Instrument 2021**

*Made* - - - - *2nd September 2021*

*Coming into force* - - *17th September 2021*

The Secretary of State for Transport, makes this Instrument in exercise of the powers conferred by section 106(3) of the Highways Act 1980(a), and now vested in the Secretary of State(b):

1. This Instrument may be cited as “The Leeds City Council (Sovereign Street Bridge) Scheme 2021 Confirmation Instrument 2021” and shall come into force on the date on which notice that it has been confirmed is first published in accordance with paragraph 1 of Schedule 2 to the Highways Act 1980.

2. The Leeds City Council (Sovereign Street Bridge) Scheme 2021 (“the Scheme”) is hereby confirmed with modifications.

3. The Scheme as confirmed is set out in the Schedule hereto (including the plans) and copies of the Scheme with its accompanying plans are deposited at the offices of the Department for Transport, MHCLG, 1 Priory Square, Priory Street, Hastings, East Sussex, TN34 1EA and at the offices of the Leeds City Council, Department of Legal Services, Civic Hall, Leeds, LS1 1UR.

Signed by authority of the Secretary of State

2nd September 2021

*Simon Connick*  
A Senior Civil Servant  
in the Department for Transport

## THE SCHEDULE

Regulation 3

### THE LEEDS CITY COUNCIL (SOVEREIGN STREET BRIDGE) SCHEME 2021

The Leeds City Council of Civic Hall, Leeds, LS1 1UR (hereinafter referred to as “the Council”) make this Scheme being the highway authority for the area in which the site is situated and in exercise of their powers under Section 106(3) of the Highways Act 1980 and all other powers so enabling them in that regard:

1. The Council are authorised to construct over the navigable wates of the River Aire the bridge specified in the Schedule to this Scheme between Sovereign Street Square and Water Lane in the City of Leeds.
2. This Scheme may be cited as the Leeds City Council (Sovereign Street Bridge) Scheme 2021.

Given under the COMMON SEAL of the  
LEEDS CITY COUNCIL  
was hereunto affixed this

on the 25th day of June 2021

in the presence of:

Signature

Name Philippa Plumtree-Varley

Title Development Team Leader  
Legal Services

# THE SCHEDULE TO THE SCHEME

Regulation 3

## **Plans and Specifications of the Sovereign Street Bridge**

The location of the bridge is shown on the plan numbered LFD-MMD-DBR-SS-DR-CB-0002 (Rev P02) and titled 'Sovereign Street Footbridge, Planning Submission, Location Plan' sealed with the Common Seal of the Council. The general design of the bridge is shown on the plan numbered LFD-MMD-DBR-SS-DR-CB-0003 (Rev P02) and titled 'Sovereign Street Footbridge, Planning Submission, Plan and Elevation Details'. The plans as aforementioned are deposited at the offices of the Leeds City Council, Department of Legal Services, Civic Hall, Leeds, LS1 1UR and also with the Department for Transport, National Transport Casework Team, Tyneside House, Skinnerburn Road, Newcastle Business Park, Newcastle upon Tyne, NE4 7AR.

## **Points of Commencement and Termination**

From a point on the northern bank of the River Aire from Sovereign Street at Ordnance Survey Grid Reference: SE 30129 33051.

To a point on the southern bank of the River Aire leading to Water Lane at Ordnance Survey Grid Reference: SE 30206 33042.

## **Spans**

A single span over the River Aire of 28.685 metres. The total external width of the bridge will be 6 metres and a clear width of 4.5 metres will be provided on top of the bridge deck for shared pedestrian and cyclist use.

## **Headroom**

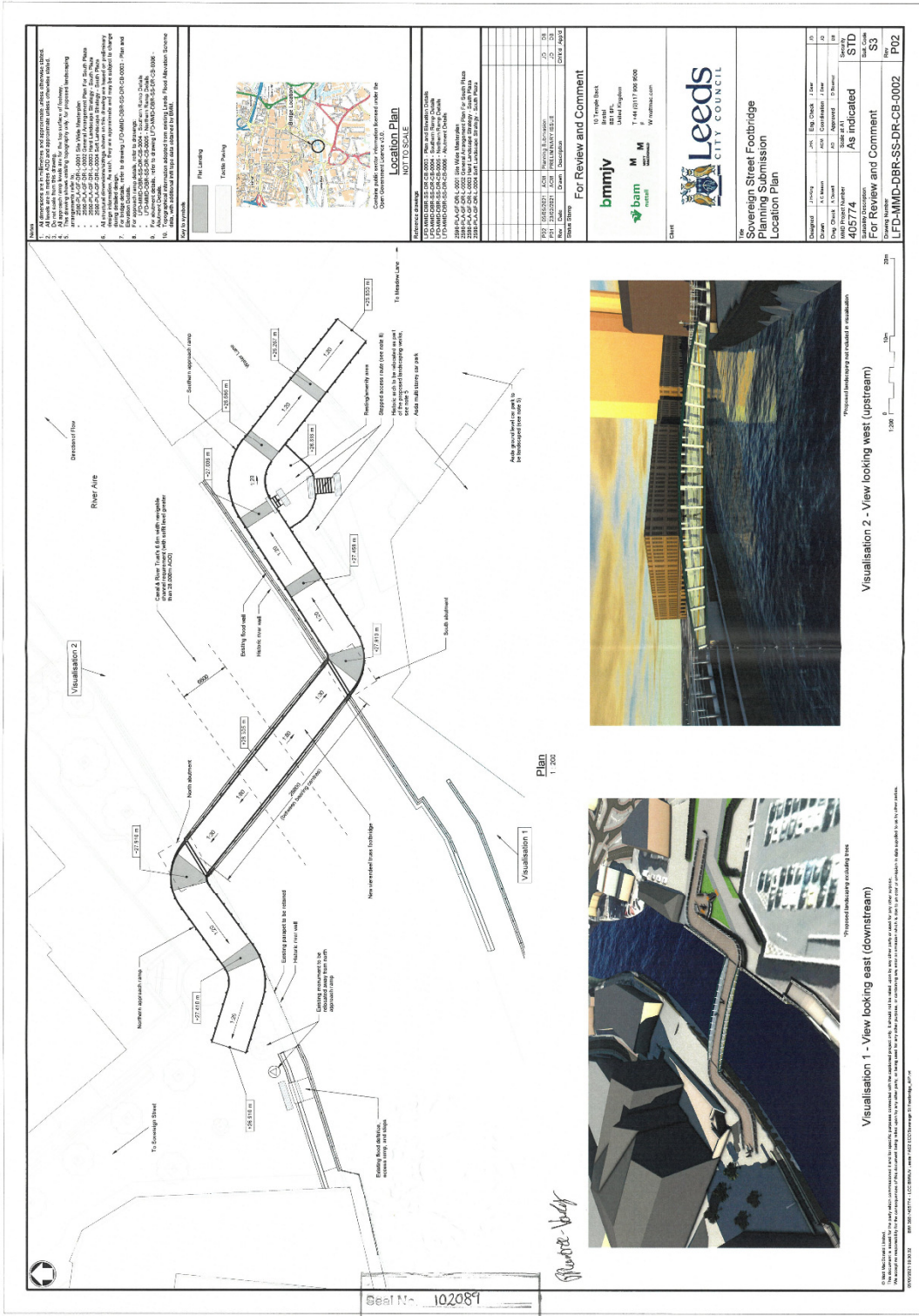
A minimum headroom of 4.1 metres above a typical river level of 23.9 metres (Above Ordnance Datum (AOD) Newlyn) over the central navigable channel of 6.6 metres.

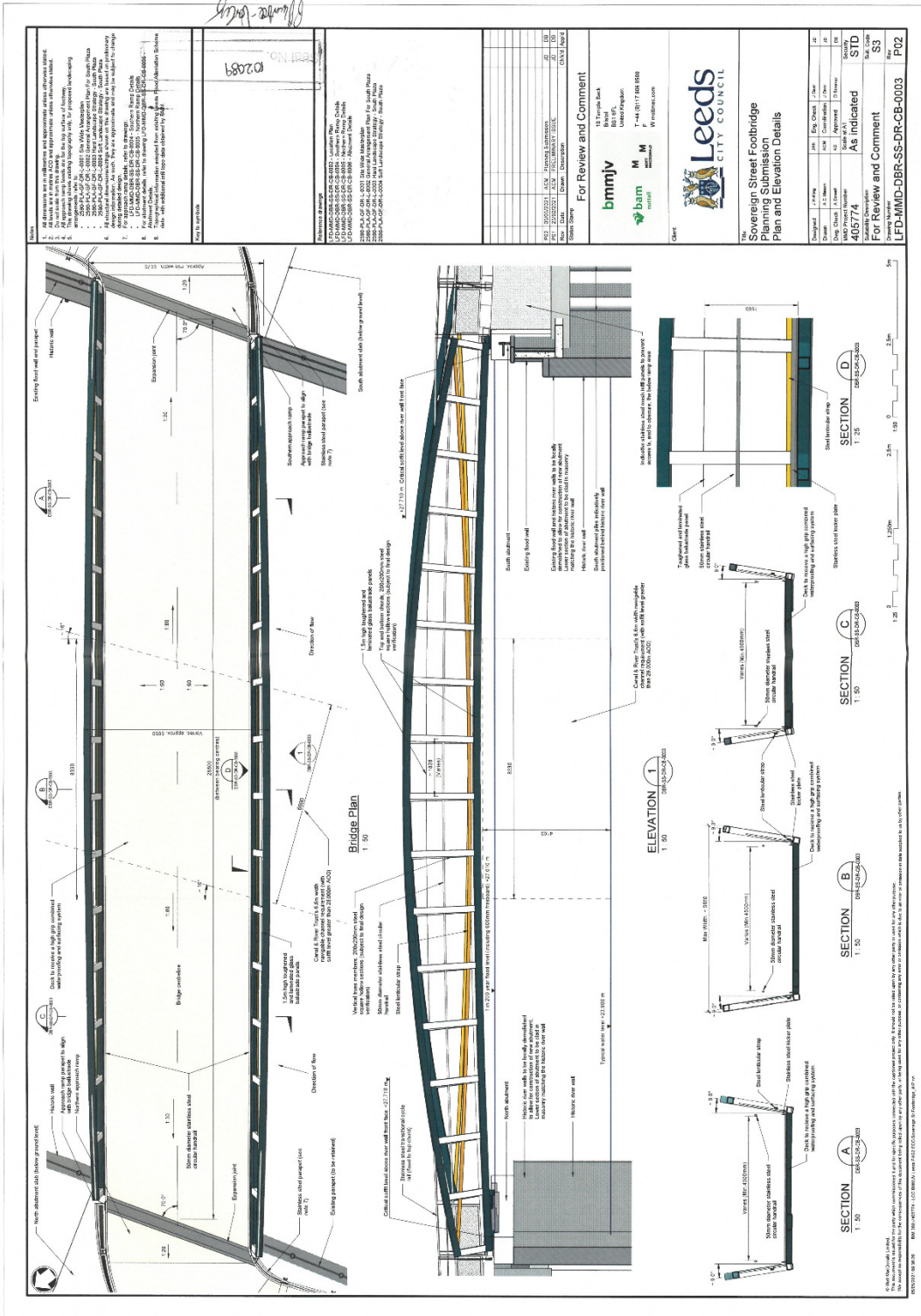
## **Waterway**

The waterway width is unaltered and is 26.5 metres upstream and 26 metres downstream. The Scheme has been devised such that a 6.6 metre navigable channel (with soffit level greater than 28.000 metres (AOD)) is maintained as required by the Canal and River Trust.

## **Overall Dimensions**

The total length of the bridge will be 29.5 metres and will cross the River Aire. The bridge will carry a 4.5 metre wide footway. It will be accessed by a short access ramp from the northern bank of the River Aire on to the main bridge structure, with a 1:20 incline gradient. It will be accessed by a longer access ramp on the southern bank of the River Aire, also with a 1:20 incline gradient resulting from the level changes present. This ramp will include a respite / seating area.





## **EXPLANATORY NOTE**

*(This note is not part of the Order)*

This Instrument confirms a Scheme that authorises the Council to construct over the navigable waters of the River Aire, the bridge specified in the Schedule to the Scheme between Sovereign Street Square and Water Lane in the City of Leeds in the County of West Yorkshire.

The Secretary of State has modified this Bridge Scheme as follows:

**1.** In the Schedule to the Scheme, the paragraph titled ‘Spans’, the words ‘or thereabouts’ have been removed and the measurement amended from 29 metres to 28.685 metres.

**2.** In the Schedule to the Scheme, the paragraph titled ‘Headroom’, the words ‘Above Ordnance Datum’ have been added.

---

© Crown copyright 2021

Printed and published in the UK by The Stationery Office Limited under the authority and superintendence of Jeff James, Controller of Her Majesty’s Stationery Office and Queen’s Printer of Acts of Parliament.



£9.75

<http://www.legislation.gov.uk/id/uksi/2021/982>

ISBN 978-0-34-822696-6



9 780348 226966