

---

STATUTORY INSTRUMENTS

---

**2009 No 2891**

**HIGHWAYS, ENGLAND**

**The Worcestershire County Council (Diglis Bridge)  
Scheme 2009 Confirmation Instrument 2009**

*Made - - - - 21st October 2009*

*Coming into force in accordance with article 1*

The Secretary of State for Transport makes this Instrument in exercise of powers conferred by section 106(3) of the Highways Act 1980<sup>(1)</sup> and now vested in the Secretary of State for Transport<sup>(2)</sup>:

1. This Instrument may be cited as “The Worcestershire County Council (Diglis Bridge) Scheme 2009 Confirmation Instrument 2009” and shall come into force on the date on which notice that it has been confirmed is first published in accordance with paragraph 1 of Schedule 2 to the Highways Act 1980.

2. The Worcestershire County Council (Diglis Bridge) Scheme 2009 (“the Scheme”), and as set out in the Schedule, is hereby confirmed without modifications.

3. The Scheme as confirmed is set out in the Schedule hereto (including the plan) copies of the Scheme with its accompanying plans are deposited at the offices of the Department for Transport, Floor 13 (IMD), Ashdown House, St Leonards on Sea, Hastings, East Sussex, TN37 7GA, and at the offices of the Council of Worcestershire County Council at County Hall, Spetchley Road, Worcester WR5 2NP.

Signed by authority of the Secretary of State for Transport

21st October 2009

*J. Blackie*  
Regional Director Government Office for the  
North East

---

(1) 1980 c. 66.  
(2) SI 1981/238.

*Status: This is the original version (as it was originally made). This item of legislation is currently only available in its original format.*

## THE SCHEDULE

### The Worcestershire County Council (Diglis Bridge) Scheme 2009

The Worcestershire County Council (hereinafter referred to as “the Council”) make this Scheme in exercise of their powers under Section 106 (3) of the Highways Act 1980 and of all other powers enabling them in that behalf:—

1. The Council are authorised to construct the bridge to form a footpath/cycle track (with a right of way on foot) over the navigable waters of the River Severn specified in the Schedule as part of the highway that they are proposing to improve between Navigation Road, Diglis, and Weir Lane, Lower Wick, Worcestershire in the City of Worcester.

2. This Scheme may be cited as The Worcestershire County Council (Diglis Bridge) Scheme 2009.

THE COMMON SEAL of  
WORCESTERSHIRE COUNTY COUNCIL  
was hereunto affixed this  
2nd day of April 2009  
in the presence of:-  
S Mallinson  
Head of Legal & Democratic Services

## THE SCHEDULE TO THE SCHEME

### Plans and specifications of the Diglis Bridge

The location and anticipated design of the Bridge are shown on the plans numbered CA60774/101 and CA60774/102 marked “The Worcestershire County Council (Diglis Bridge) Scheme 2009” sealed with the Common Seal of the Council and attached hereto.

## POINTS OF COMMENCEMENT AND TERMINATION

From a point on the west bank of the River Severn not greater than 80.00 metres and not less than 50.00 metres southeast of the end of Footpath F50081, leading on from the end of Weir Lane, Lower Wick, Worcester, Worcestershire.

To a point on the east bank of the River Severn not greater than 135.00 metres and not less than 105.00 metres southeast from the southern end of Diglis Island, Diglis, Worcester, Worcestershire.

## SPAN

There is to be a clear span of 61.00 metres (minimum).

**Status:** This is the original version (as it was originally made). This item of legislation is currently only available in its original format.

## RAMPS

There will be steps on both banks leading down to the south side of the bridge span and ramps down to both banks to the northern side to link to footpaths on both banks.

## HEADWAY

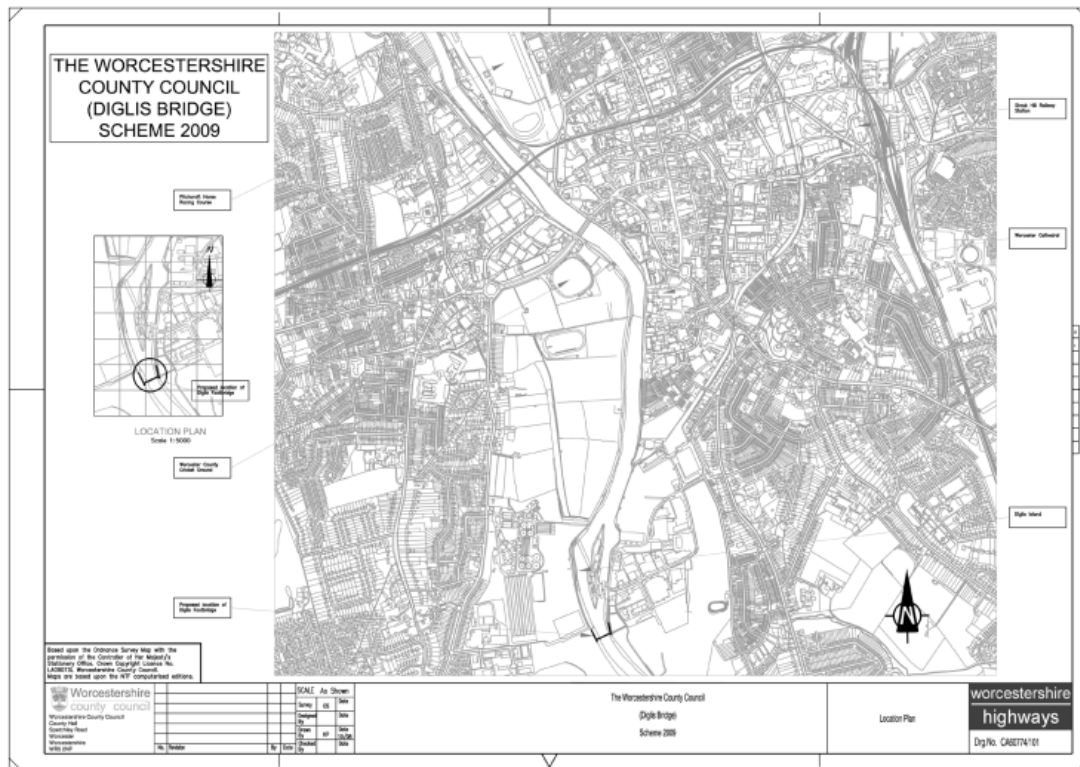
The minimum headroom under the bridge is to be 8.30 metres above Mean summer water level of 8.20 metres AOD, above the Navigation Channel and a minimum of 7.91 metres above Mean summer water level of 8.20 metres AOD, outside the Navigation Channel.

## WATERWAY

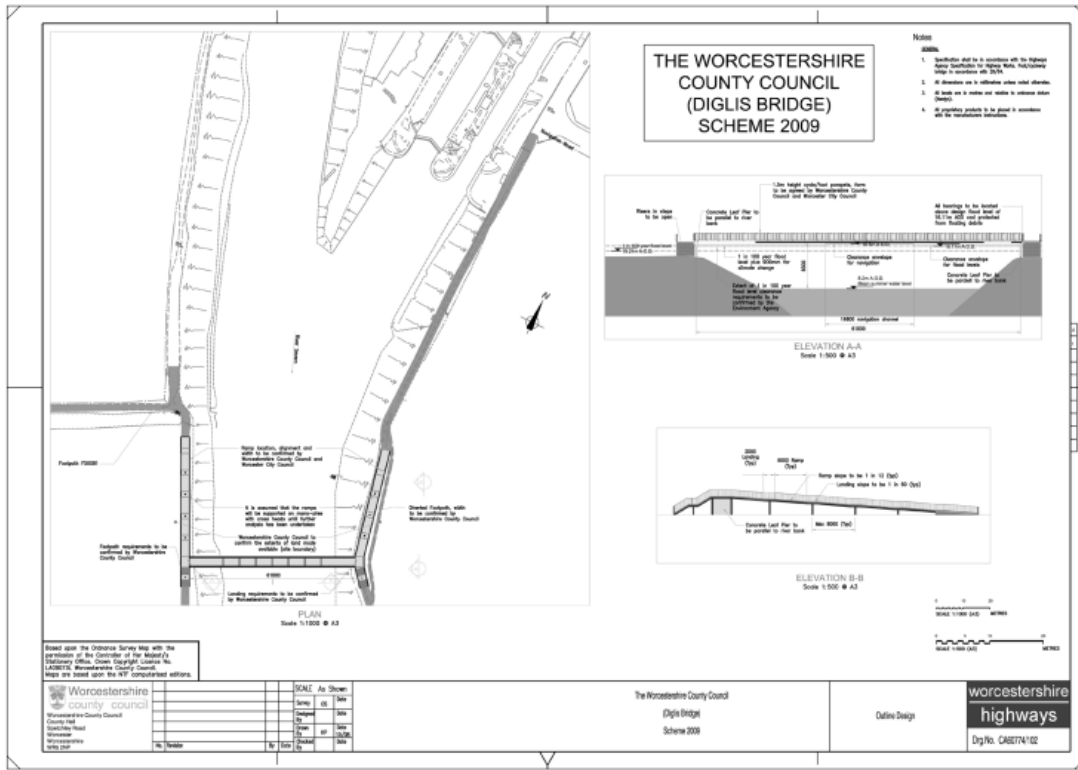
The River Sever is an unrestricted channel with a central Navigation Channel of 16.60 metres width

## OVERALL DIMENSIONS

The Bridge will have a clear unobstructed internal width of 3.00 metres minimum, 4.00 metres maximum, with parapets to both sides and is to be designed to carry pedestrians and cyclists.



**Status:** This is the original version (as it was originally made). This item of legislation is currently only available in its original format.



### EXPLANATORY NOTE

*(This note is not part of the Instrument)*

This Instrument confirms a Scheme to construct as part of the improved highway between Navigation Road, Diglis and Weir Lane, Lower Wick in the City of Worcester in the County of Worcestershire a bridge over the navigable waters of the River Sever.