

---

STATUTORY INSTRUMENTS

---

**2008 No. 3298**

**HIGHWAYS, ENGLAND**

**The Kent County Council (Milton Creek Bridge)  
(No. 2) Scheme 2007 Confirmation Instrument 2008**

*Made - - - - 23rd December 2008*

*Coming into force in accordance with article 1*

The Secretary of State for Transport makes this Instrument in exercise of powers conferred by section 106(3) of the Highways Act 1980(1) and now vested in him(2):

1. This Instrument may be cited as “The Kent County Council (Milton Creek Bridge) (No.2) Scheme 2007 Confirmation Instrument 2008” and shall come into force on the date on which notice that it has been confirmed is first published in accordance with paragraph 1 of Schedule 2 to the Highways Act 1980.

2. The Kent County Council (Milton Creek Bridge) (No.2) Scheme 2007 (“the Scheme”) is hereby confirmed without modifications.

3. The Scheme as confirmed is set out in the Schedule hereto (including the plans) and copies of the Scheme with its accompanying plans are deposited at the offices of the Department for Transport, Floor 13 (IMD), Ashdown House, St Leonards on Sea, Hastings, East Sussex, TN37 7GA, and at the offices of Kent County Council at Sessions House, County Hall, Maidstone, Kent ME14 1XQ.

Signed by authority of the Secretary of State for Transport,

23rd December 2008

*J Blackie*  
Regional Director Government Office for the  
North East

---

(1) 1980 c. 66.  
(2) S.I.1981/238

*Status: This is the original version (as it was originally made). This item of legislation is currently only available in its original format.*

## THE SCHEDULE

### The Kent County Council (Milton Creek Bridge) (No.2) Scheme 2007

The Kent County Council (hereinafter referred to as “the Council”) make this Scheme in exercise of their powers under section 106(3) of the Highways Act 1980 and of all other powers enabling them in that behalf:–

1. The Council are authorised to construct over the navigable waters of Milton Creek (The Swale) the Bridge specified in the Schedule to this Scheme as part of the highway which they are proposing to construct from the roundabout joining Swale Way and Ridham Avenue, Kemsley, in a generally south easterly direction to the roundabout joining Castle Road and Swale Way, Sittingbourne, in the Borough of Swale in the County of Kent.

2. This Scheme may be cited as “The Kent County Council (Milton Creek Bridge) (No.2) Scheme 2007”.

Given under the common seal of the Council on the 20th day of December 2007.

The COMMON SEAL of the COUNCIL was hereunto affixed in the presence of:–

*M Rummins*

Authorised Signatory

## THE SCHEDULE TO THE SCHEME

### Plans and Specifications of the Milton Creek Bridge

The location and general design of the Bridge are shown on the plans numbered 2947/OR/1 Revision A and 2947/OR/2 Revision A respectively, annexed hereto.

### **POINTS OF COMMENCEMENT AND TERMINATION**

From a point on the west bank of Milton Creek at grid reference 591964 E 165219 N on Ordnance Survey Sheet TQ96, 360 metres north west of the roundabout joining Castle Road and Swale Way, Sittingbourne.

To a point on the east bank of Milton Creek at grid reference 592047 E 165162 N on Ordnance Survey Sheet TQ96, 260 metres north west of the roundabout joining Castle Road and Swale Way, Sittingbourne.

### **SPANS**

An overall span of 100.65 metres comprising a main span of 39.95 metres and two approach spans of 30.35 metres each.

### **HEADWAY**

A minimum headway of 4.2 metres above the Mean High Water Spring tide level (MHWS) of 2.8 metres AOD over a central navigation channel of 15 metres minimum width.

### **WATERWAY**

A minimum clear navigable waterway of 34 metres.

## **OVERALL DIMENSIONS**

The bridge will be 16.3 metres wide and will carry a 7.3 metre wide single carriageway with a 1.0 metre wide hard strip on each side. There will be a 4.0 metre wide combined footway/cycleway on the southern side and a 2.0 metre wide paved verge on the northern side. There will be a 0.5 metre wide parapet plinth on each side. The bridge will have an overall length of 123.3 metres.

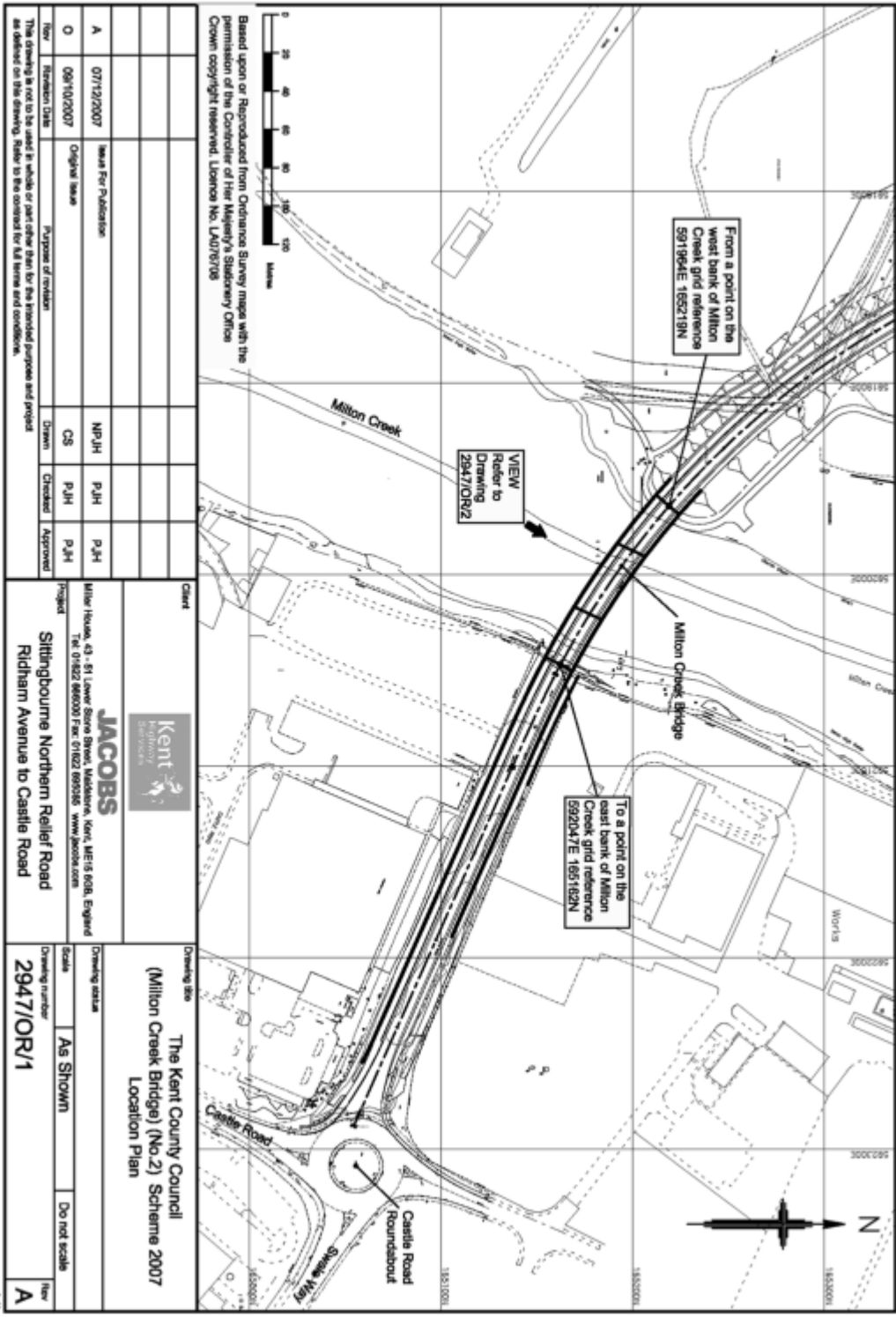
---

## **EXPLANATORY NOTE**

*(This note is not part of the Instrument)*

This Instrument confirms a Scheme to construct over the navigable waters of Milton Creek a bridge as part of the highway which is to be constructed from the roundabout joining Swale Way and Ridham Avenue, Kemsley to the roundabout joining Castle Road and Swale Way, Sittingbourne, in the Borough of Swale in the County of Kent.

Status: This is the original version (as it was originally made). This item of legislation is currently only available in its original format.



Revision	Date	Drawn	Checked	Approved
A	07/12/2007	NPJH	PJH	PJH
O	09/10/2007	CS	PJH	PJH
Purpose of revision				
This drawing is not to be used in whole or part other than for the intended purposes and project as defined on this drawing. Refer to the contract for full terms and conditions.				

Client  
**JACOBS**  
 Kent  
 The Kent County Council  
 (Milton Creek Bridge) (No 2) Scheme 2007  
 Location Plan

Drawn status  
 Scale: As Shown  
 Do not scale

Drawing number  
**2947/OR/1**

Rev  
**A**

Based upon or Reproduced from Ordnance Survey maps with the permission of the Controller of Her Majesty's Stationery Office. Crown copyright reserved. Licence No. LA076708

Milton House, 43 - 51 Lower Stone Street, Maidstone, Kent, ME15 6QB, England  
 Tel: 01622 866000 Fax: 01622 892058 www.jacobs.com

Sittingbourne Northern Relief Road  
 Ridham Avenue to Castle Road

