

SCHEDULE 3

Regulation 12, 13 and 14

LAYOUT OF REGISTRATION MARKS

PART 1

TABLE A

PERMITTED LAYOUTS FOR REGISTRATION MARKS

<i>(1)</i> Description of mark	<i>(2)</i> Permitted layouts
1. A group consisting of two letters and two numbers followed by a group of 3 letters (for example DE51 ABC).	Diagrams 1a and 1b.
2. A group consisting of a single letter and not more than 3 numbers followed by a group of 3 letters (for example A123 ABC).	Diagrams 2a, 2b and 2c.
3. A group of 3 letters followed by a group consisting of not more than 3 numbers and a single letter (for example ABC 123A).	Diagrams 3a, 3b and 3c.
4. A group of 4 numbers followed by a single letter or a group of 2 letters (for example 1234 AB, 1234 A).	Diagrams 4a and 4b.
5. A group of not more than 3 numbers followed by a group of not more than 3 letters (for example 123 ABC, 123 AB, 12 A).	Diagrams 5a and 5b.
6. A group of not more than 3 letters followed by a group of not more than 3 numbers (for example ABC 123, AB 123, A 12).	Diagrams 6a and 6b.
7. A single letter or group of 2 letters followed by a group of 4 numbers (for example AB 1234, A 1234).	Diagrams 7a and 7b.
8. A group of 3 letters followed by a group of 4 numbers (for example ABZ 1234, being a form of mark issued only in Northern Ireland).	Diagrams 8a and 8b.
9. A group of 4 numbers followed by a group of 3 letters (for example 1234 ABZ, being a form of mark issued only in Northern Ireland).	Diagrams 9a and 9b.

PART 2

DIAGRAMS SHOWING PERMITTED LAYOUTS

Diagram 1a

Status: This is the original version (as it was originally made).



Diagram 1b



Diagram 2a

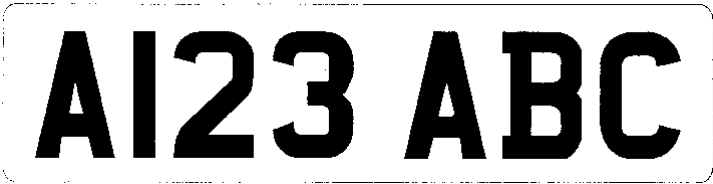


Diagram 2b



Diagram 2c

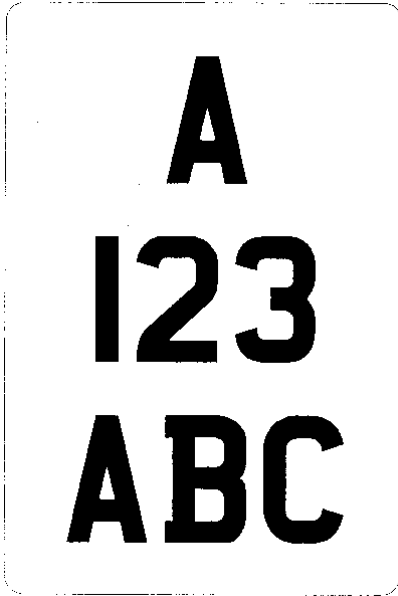


Diagram 3a

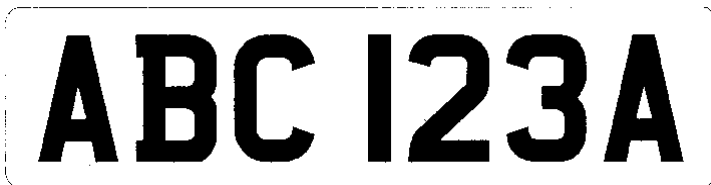


Diagram 3b

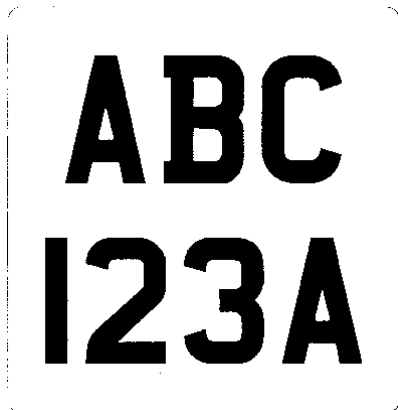


Diagram 3c

Status: This is the original version (as it was originally made).

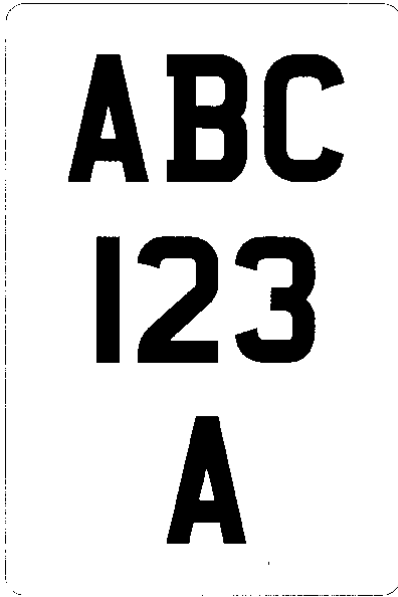


Diagram 4a

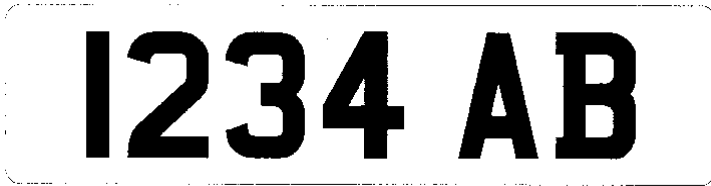


Diagram 4b

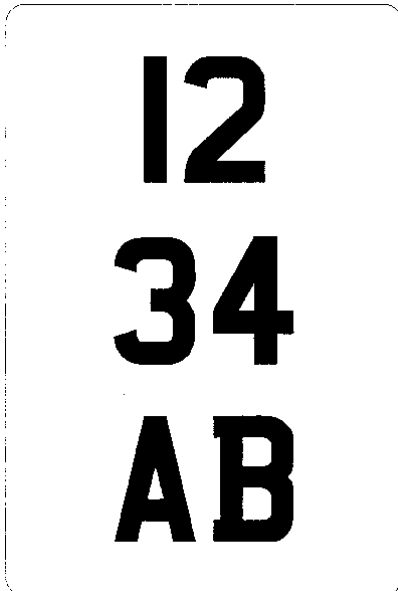


Diagram 5a

I23 AB

Diagram 5b

**I23
AB**

Diagram 6a

AB I23

Diagram 6b

**AB
I23**

Diagram 7a

AB I234

Diagram 7b

Status: This is the original version (as it was originally made).

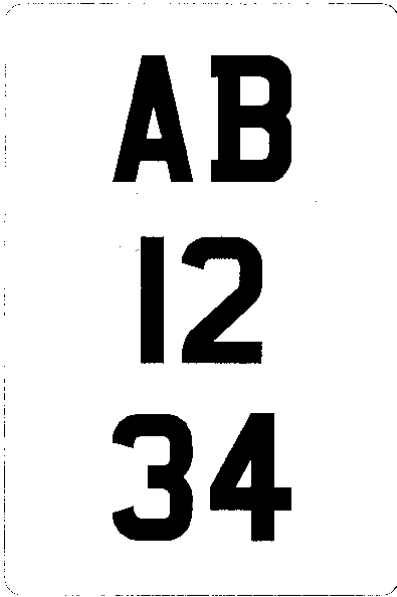


Diagram 8a



Diagram 8b



Diagram 9a

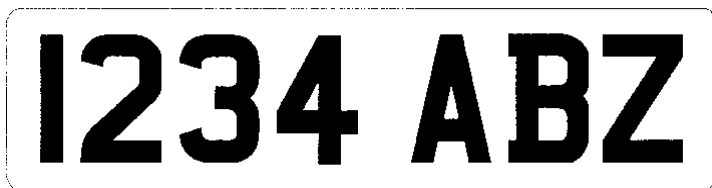


Diagram 9b



PART 3

TABLE B

STROKE AND CHARACTER WIDTH, SPACING AND MARGINS

(1) Relevant dimension	Relevant character height:		
	(2) 89 mm.	(3) 79 mm.	(4) 64 mm.
1. Character width — (all new registration plates from 1.9.01 except replacement of “classic” plates)	—	50 mm.	44 mm.
2. Character width 64 mm. (other registration plates)	64 mm.	57 mm.	44 mm.
3. Stroke width	16 mm.	14 mm.	10 mm.
4. Space between two characters within group: general rule	13 mm.	11 mm.	10 mm.
5. Horizontal space between groups	38 mm.	33 mm.	30 mm.
6. Vertical space between groups	19 mm.	19 mm.	13 mm.
7. Minimum margin	13 mm.	11 mm.	11 mm.
8. Pressed/embossed plates fixed before 1.9.01 and “classic” plates: space permitted between “I”	13 to 37 mm.	11 to 33 mm.	—

Status: This is the original version (as it was originally made).

<i>(1) Relevant dimension</i>	<i>Relevant character height:</i>		
	<i>(2) 89 mm.</i>	<i>(3) 79 mm.</i>	<i>(4) 64 mm.</i>
or “I” and another character			
9. Pressed/ embossed plates fixed before 1.9.01 and “classic” plates: space permitted between characters if both “I” or “1”	13 to 60 mm.	11 to 54 mm.	—