

SCHEDULE 13

Regulation 13(1)

Status: This is the original version (as it was originally made). This item of legislation is currently only available in its original format.

PART I

PROPORTIONS AND FORM OF LETTERS, NUMERALS AND OTHER CHARACTERS

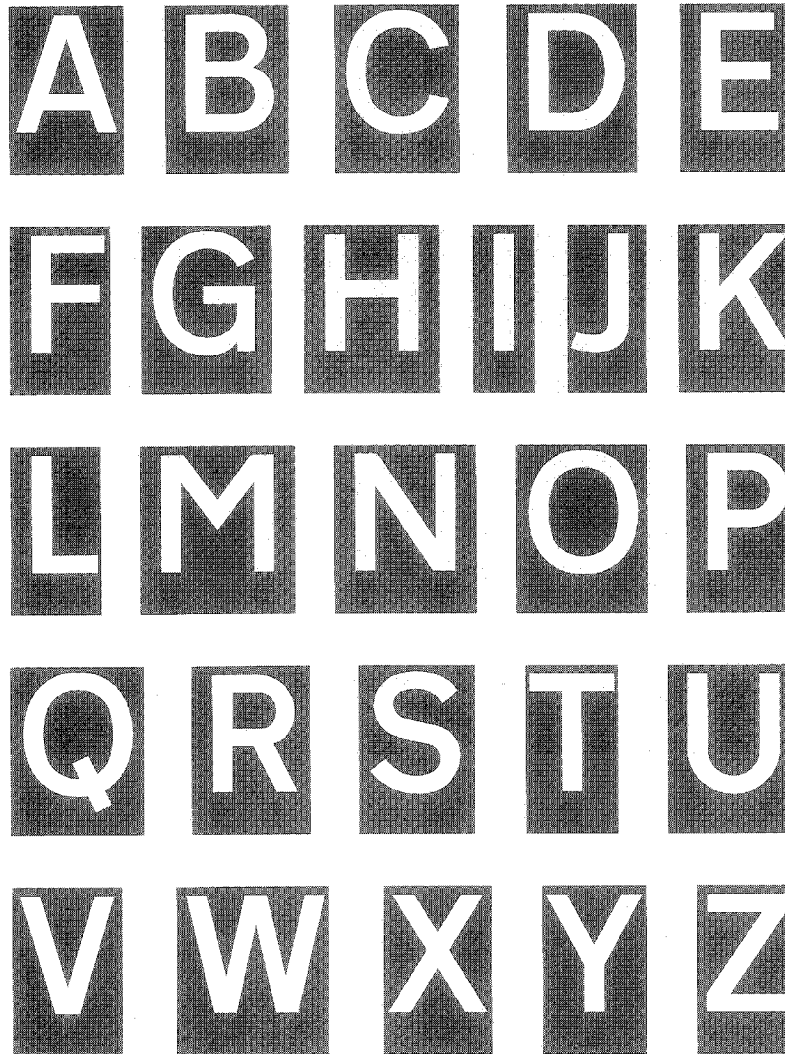
(for use on a sign or parts of a sign with red, blue, brown, black or green background and on the signs shown in diagrams 2714 and 2715)

SCHEDULE 13 PART I

Regulation 13 (1)

PROPORTIONS AND FORM OF LETTERS, NUMERALS AND OTHER CHARACTERS

(for use on a sign or parts of a sign with a red, blue, brown, black or green background and on the signs shown in diagrams 2714 and 2715)



Status: This is the original version (as it was originally made). This item of legislation is currently only available in its original format.

SCHEDULE 13 PART I PROPORTIONS AND FORM OF LETTERS, NUMERALS
AND OTHER CHARACTERS (contd.)

(for use on a sign or parts of a sign with a red, blue, brown, black or green
background and on the signs shown in diagrams 2714 and 2715)

a b c d e

f g h i j k

l m n o p

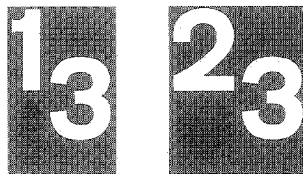
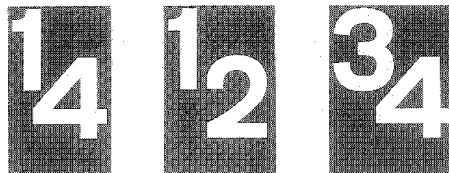
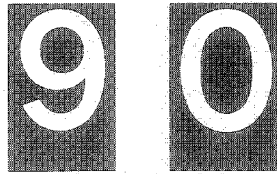
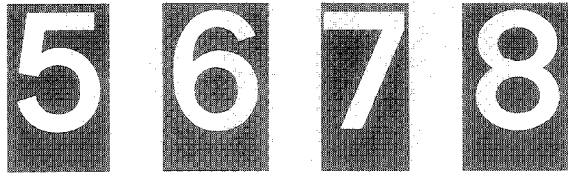
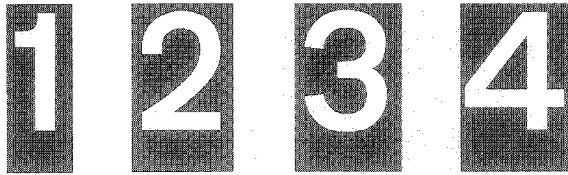
q r s t u

v w x y z

Status: This is the original version (as it was originally made). This item of legislation is currently only available in its original format.

SCHEDULE 13 PART I PROPORTIONS AND FORM OF LETTERS, NUMERALS AND OTHER CHARACTERS (contd.)

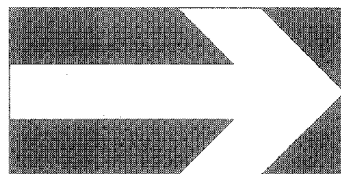
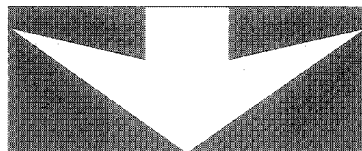
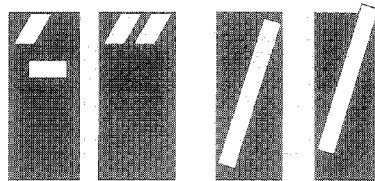
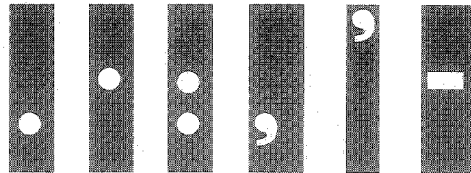
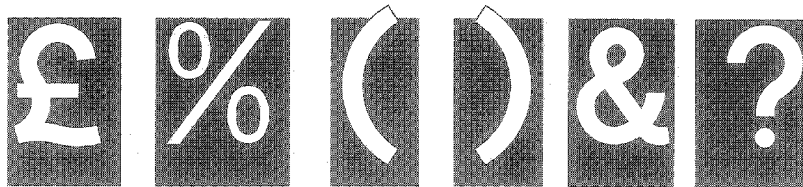
(for use on a sign or parts of a sign with a red, blue, brown, black or green background and on the signs shown in diagrams 2714 and 2715)



Status: This is the original version (as it was originally made). This item of legislation is currently only available in its original format.

SCHEDULE 13 PART I PROPORTIONS AND FORM OF LETTERS, NUMERALS
AND OTHER CHARACTERS (contd.)

(for use on a sign or parts of a sign with a red, blue, brown, black or green background and on the signs shown in diagrams 2714 and 2715)



Status: This is the original version (as it was originally made). This item of legislation is currently only available in its original format.

PART II

PROPORTIONS AND FORM OF LETTERS, NUMERALS AND OTHER CHARACTERS

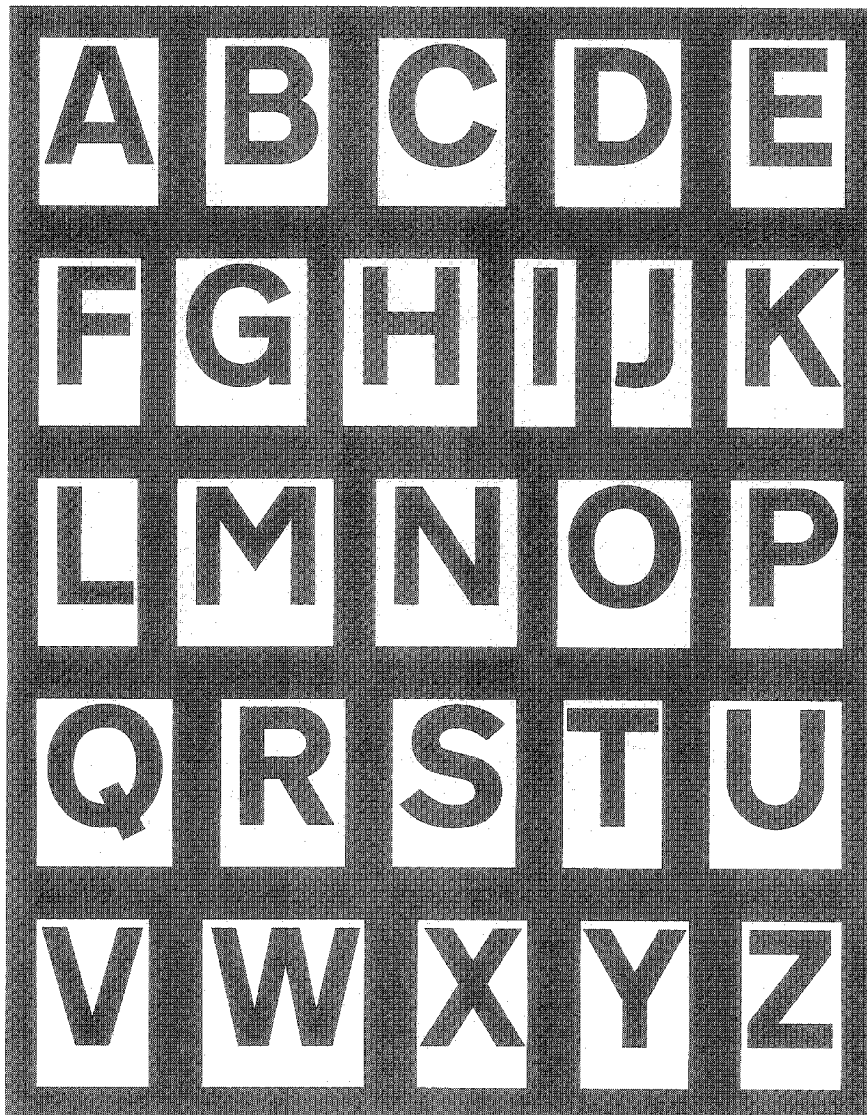
(for use on a sign or parts of a sign with a white, yellow or orange background and on the signs shown in diagrams 2714 and 2715)

SCHEDULE 13 PART II

Regulation 13 (1)

PROPORTIONS AND FORM OF LETTERS, NUMERALS AND OTHER CHARACTERS

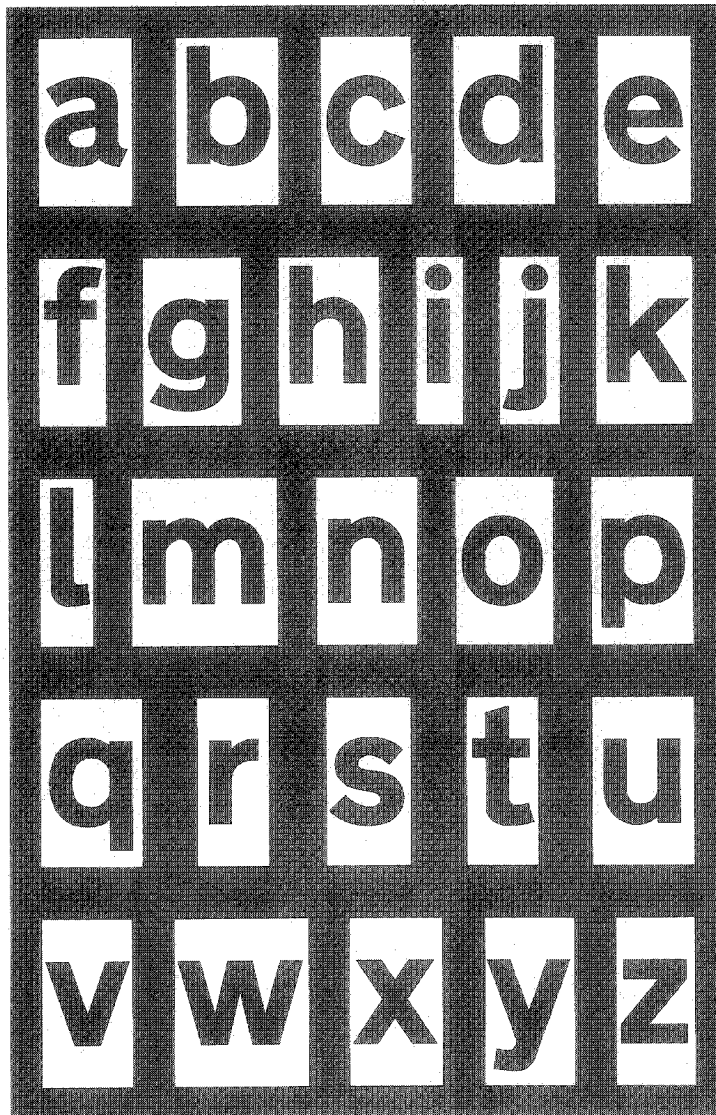
(for use on a sign or parts of a sign with a white, yellow or orange background other than the signs shown in diagrams 2714 and 2715)



Status: This is the original version (as it was originally made). This item of legislation is currently only available in its original format.

SCHEDULE 13 PART II PROPORTIONS AND FORM OF LETTERS, NUMERALS
AND OTHER CHARACTERS (contd.)

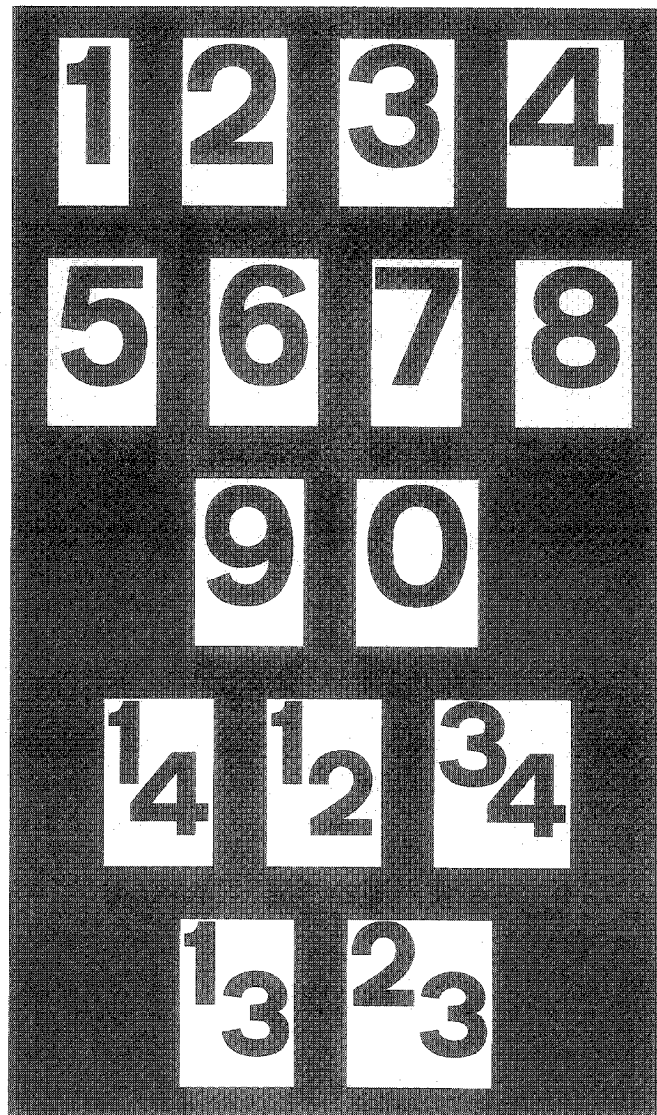
(for use on a sign or parts of a sign with a white, yellow or orange
background other than the signs shown in diagrams 2714 and 2715)



Status: This is the original version (as it was originally made). This item of legislation is currently only available in its original format.

SCHEDULE 13 PART II PROPORTIONS AND FORM OF LETTERS, NUMERALS AND OTHER CHARACTERS (contd.)

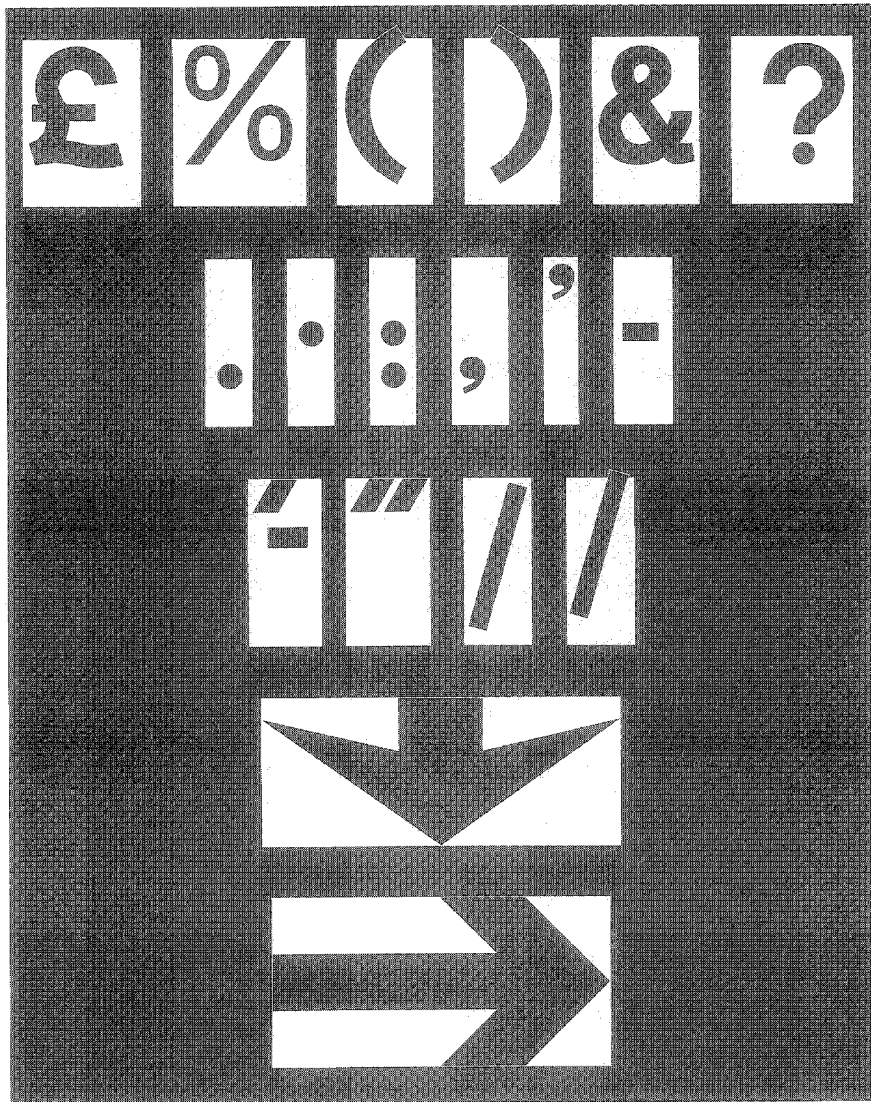
(for use on a sign or parts of a sign with a white, yellow or orange background other than the signs shown in diagrams 2714 and 2715)



Status: This is the original version (as it was originally made). This item of legislation is currently only available in its original format.

SCHEDULE 13 PART II PROPORTIONS AND FORM OF LETTERS, NUMERALS
AND OTHER CHARACTERS (contd.)

(for use on a sign or parts of a sign with a white, yellow or orange
background other than the signs shown in diagrams 2714 and 2715)



Status: This is the original version (as it was originally made). This item of legislation is currently only available in its original format.

PART III

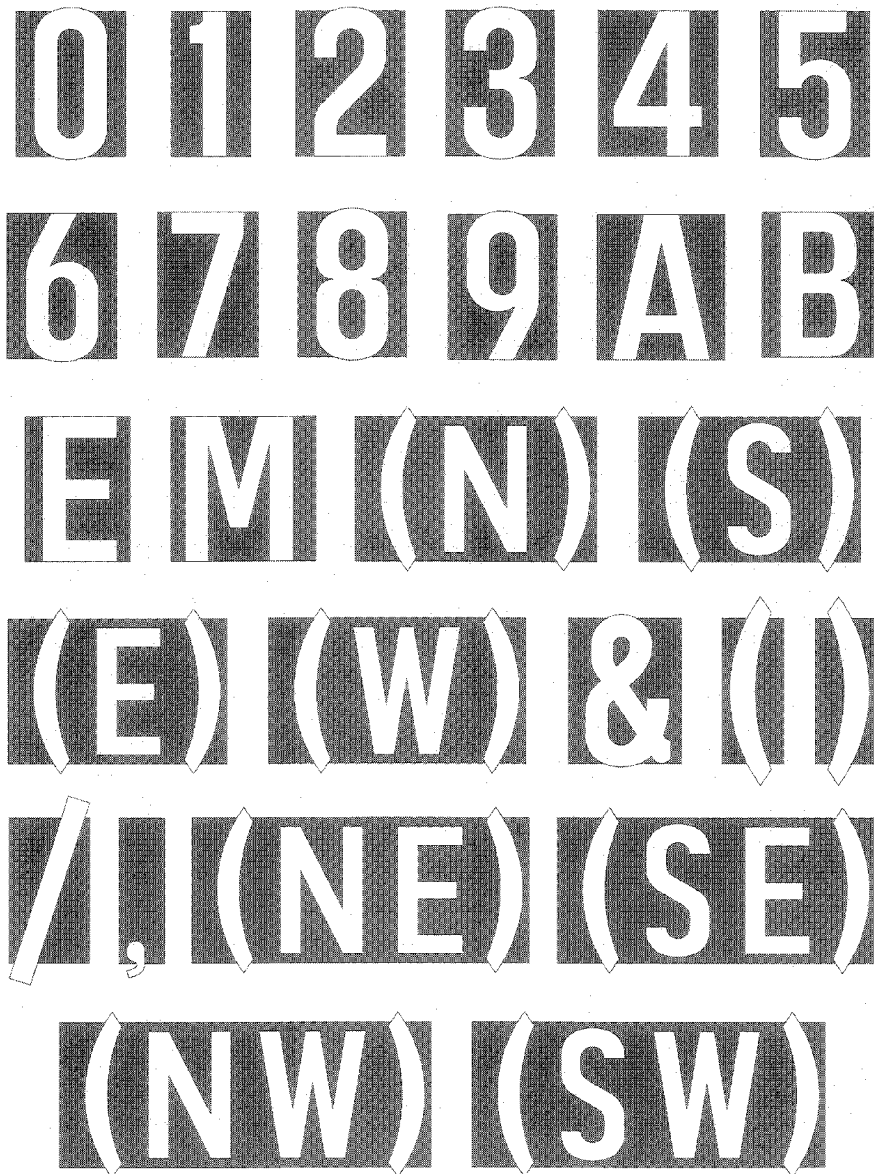
PROPORTIONS AND FORM OF LETTERS, NUMERALS AND OTHER CHARACTERS

(for route numbers on permanent motorway signs with blue backgrounds)

SCHEDULE 13 PART III

Regulation 13 (3)

PROPORTIONS AND FORM OF LETTERS, NUMERALS AND OTHER CHARACTERS (for route numbers on permanent motorway signs with blue backgrounds)



Document Generated: 2023-08-10

Status: *This is the original version (as it was originally made). This item of legislation is currently only available in its original format.*

Regulation 13(3)

Status: This is the original version (as it was originally made). This item of legislation is currently only available in its original format.

PART IV

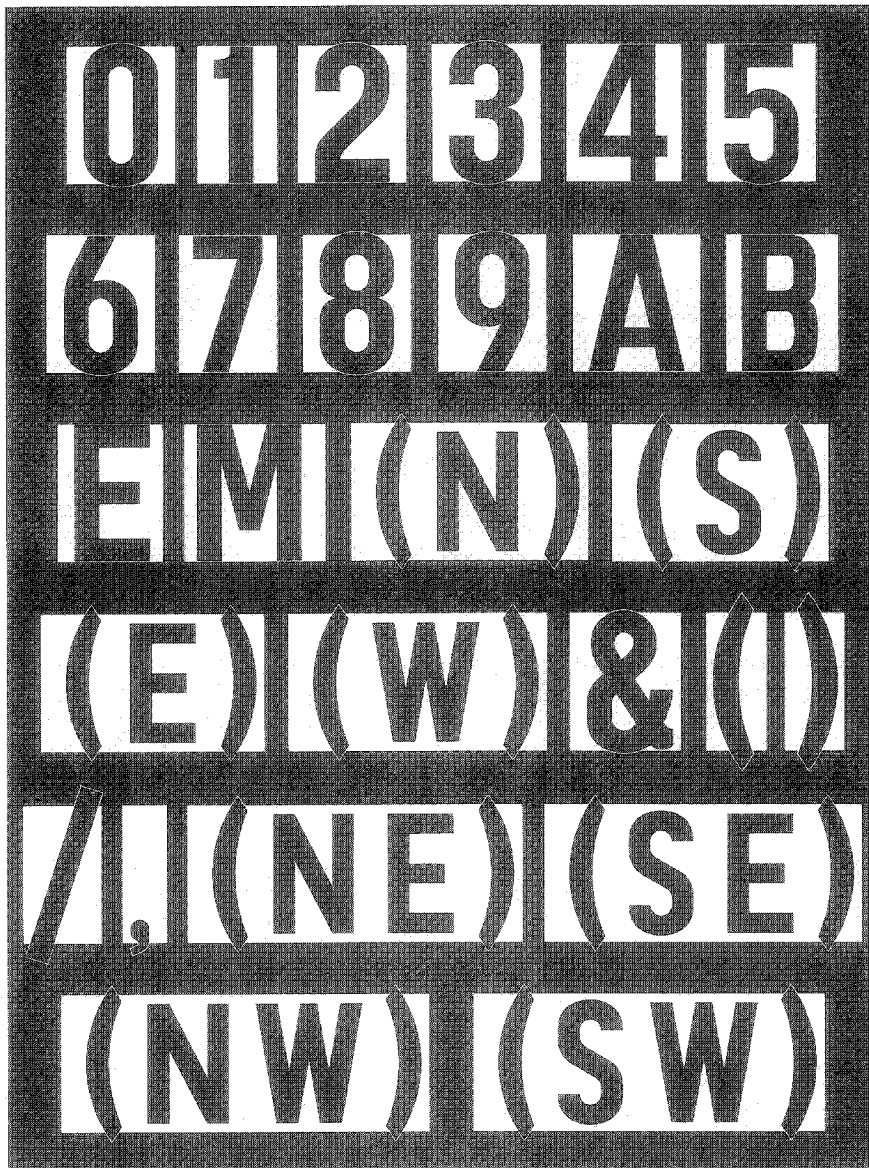
PROPORTIONS AND FORM OF LETTERS, NUMERALS AND OTHER CHARACTERS

(for route numbers on temporary motorway signs with yellow backgrounds)

SCHEDULE 13 PART IV

Regulation 13 (3)

PROPORTIONS AND FORM OF LETTERS, NUMERALS AND OTHER CHARACTERS
(for route numbers on temporary motorway signs with yellow backgrounds)



Document Generated: 2023-08-10

Status: *This is the original version (as it was originally made). This item of legislation is currently only available in its original format.*

Regulation 13(5)

Status: This is the original version (as it was originally made). This item of legislation is currently only available in its original format.

PART V

PROPORTIONS AND FORM OF LETTERS, NUMERALS AND OTHER CHARACTERS FOR USE ON VARIABLE MESSAGE SIGNS

(where the characters shown in Parts I, II, III and IV cannot be used because of the method of construction or operation of the sign)

SCHEDULE 13 PART V

Regulation 13(5)

PROPORTIONS AND FORM OF LETTERS, NUMERALS AND OTHER CHARACTERS FOR USE ON VARIABLE MESSAGE SIGNS

(where the characters shown in Parts I, II, III and IV cannot be used because of the method of construction or operation of the sign)

A B C D E E F

G H I J K L L

M N O P Q R S

T U V W X Y Z

0 1 2 3 4 4

5 6 7 8 9

& £ . , ' "

Document Generated: 2023-08-10

Status: *This is the original version (as it was originally made). This item of legislation is currently only available in its original format.*

Regulation 13(6)

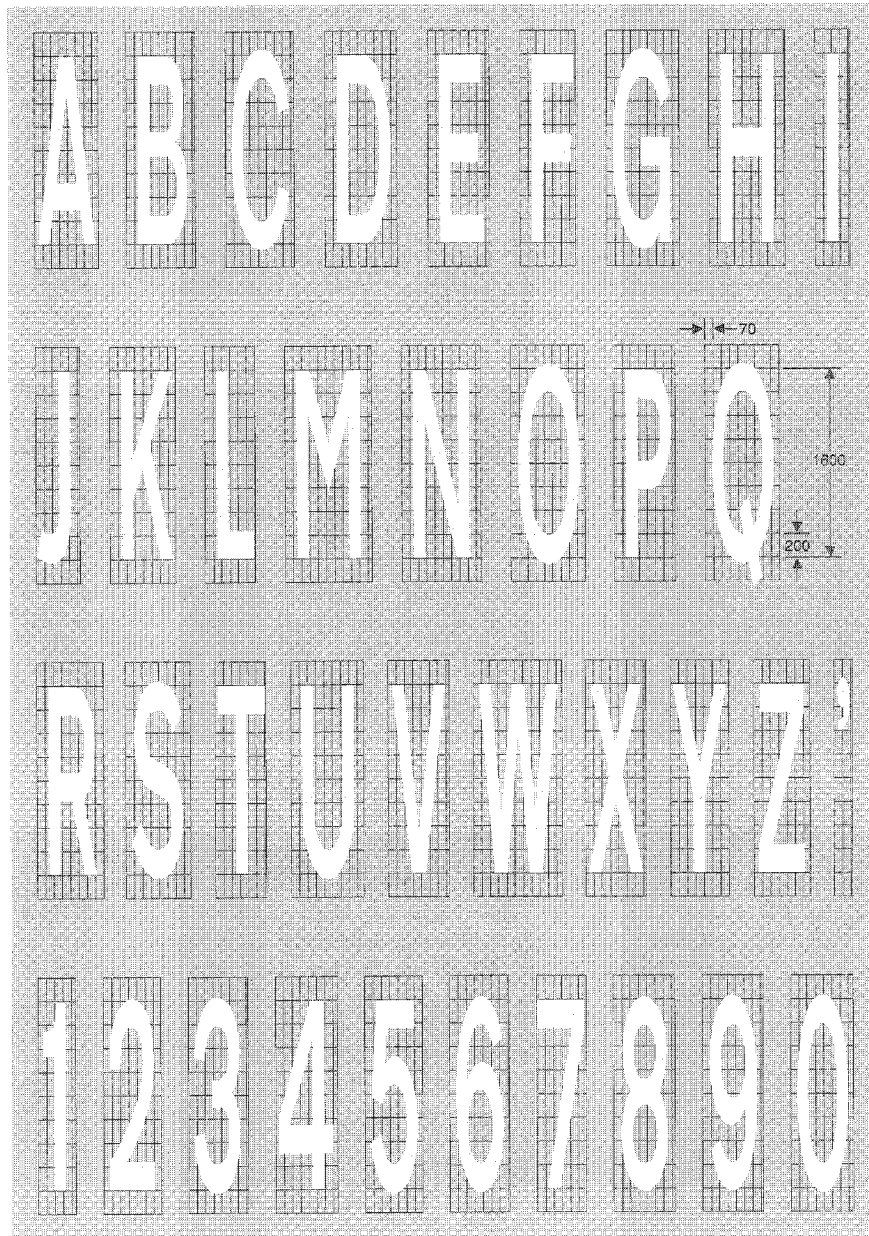
Status: This is the original version (as it was originally made). This item of legislation is currently only available in its original format.

PART VI

PROPORTIONS AND FORM OF LETTERS, NUMERALS AND OTHER CHARACTERS FOR USE IN THE ROAD MARKINGS SHOWN IN SCHEDULE 6

(a) with a height of 1.6 metres

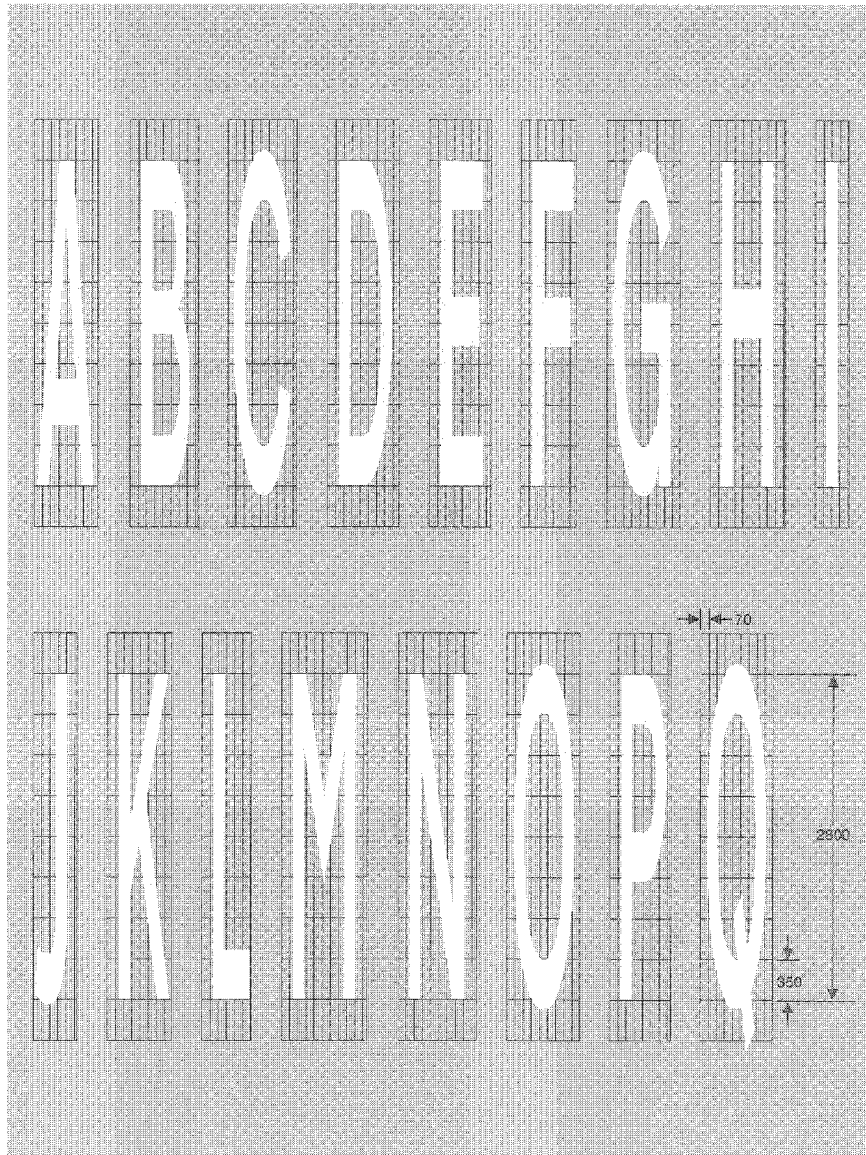
SCHEDULE 13 PART VI Regulation 13(6)
PROPORTIONS AND FORM OF LETTERS, NUMERALS AND OTHER CHARACTERS FOR USE IN THE ROAD MARKINGS SHOWN IN SCHEDULE 6
(a) with a height of 1.8 metres



Status: This is the original version (as it was originally made). This item of legislation is currently only available in its original format.

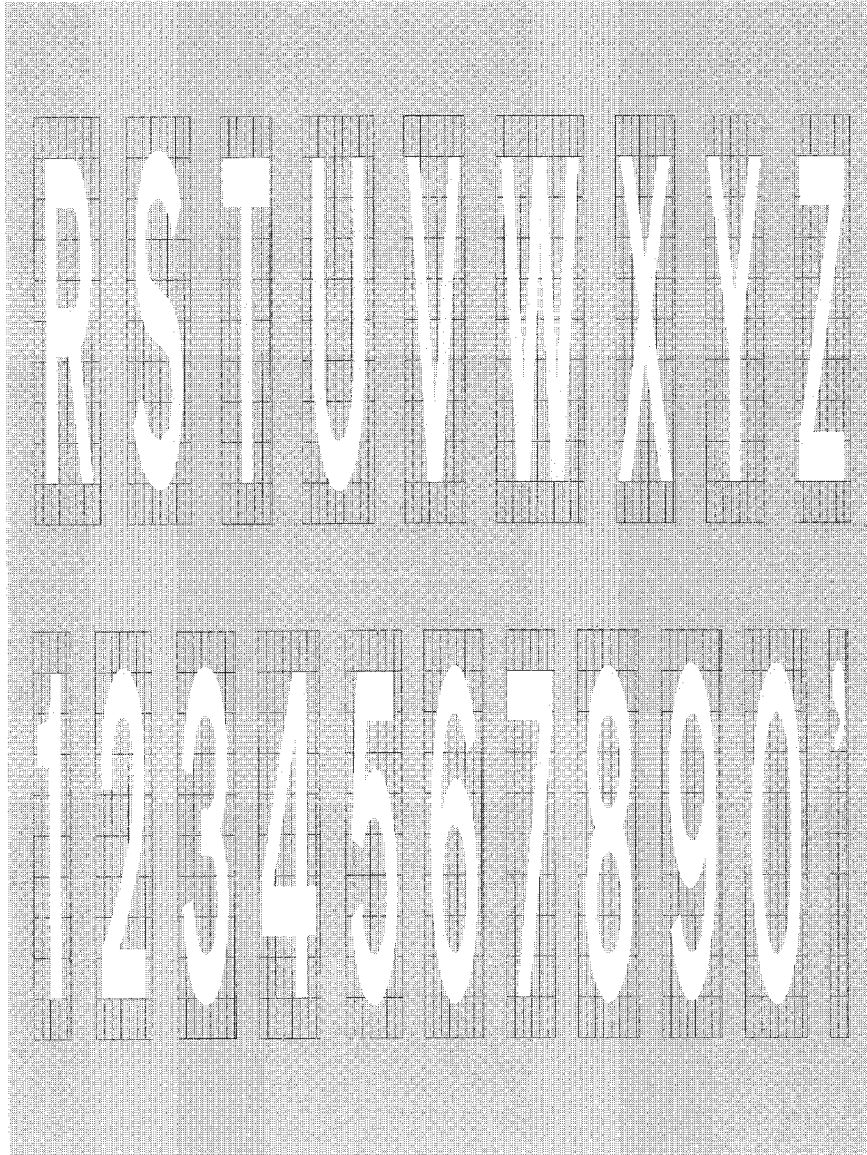
(b) with a height of 2.8 metres

SCHEDULE 13 PART VI Regulation 13(8)
PROPORTIONS AND FORM OF LETTERS, NUMERALS AND OTHER
CHARACTERS FOR USE IN THE ROAD MARKINGS SHOWN IN SCHEDULE 6
(b) with a height of 2.8 metres



Status: This is the original version (as it was originally made). This item of legislation is currently only available in its original format.

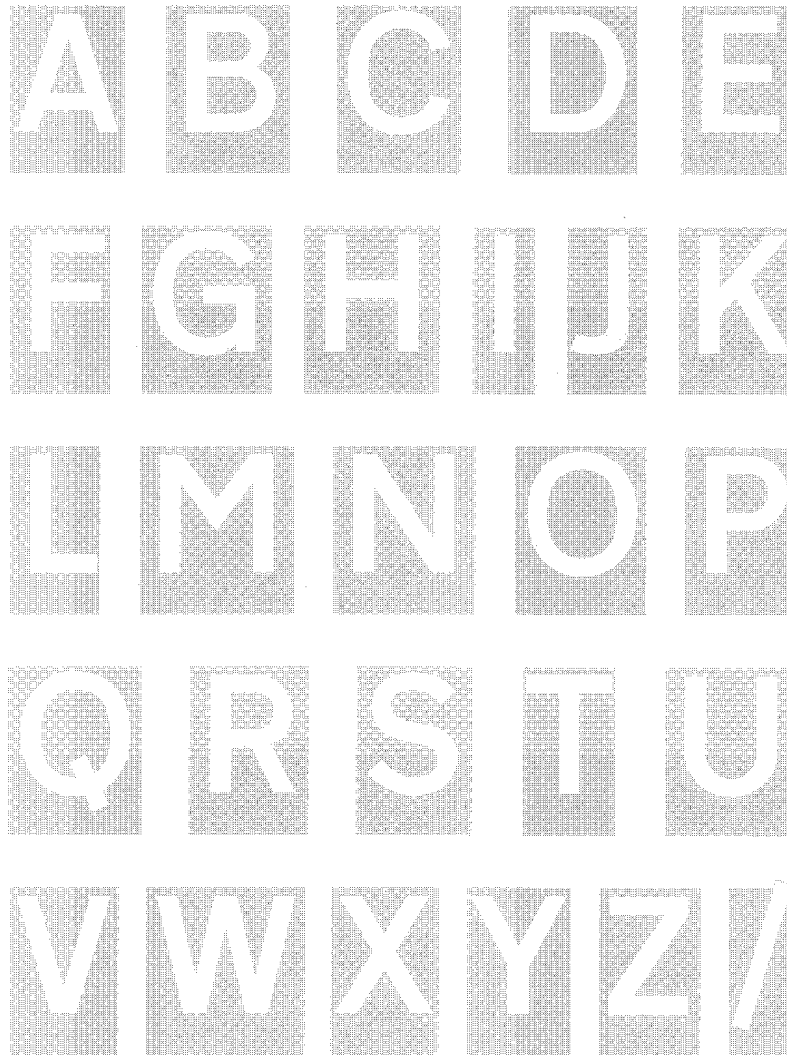
SCHEDULE 13 PART VI PROPORTIONS AND FORM OF LETTERS, NUMERALS AND OTHER CHARACTERS FOR USE IN THE ROAD MARKINGS SHOWN IN SCHEDULE 6 (contd.)
(b) with a height of 2.8 metres



Status: This is the original version (as it was originally made). This item of legislation is currently only available in its original format.

*(c) for use in the road markings shown in diagrams
1027.1, 1028.2, 1028.3, 1028.4, 1029 and 1033*

SCHEDULE 13 PART VI Regulation 13(6)
PROPORTIONS AND FORM OF LETTERS, NUMERALS AND OTHER CHARACTERS
FOR USE IN THE ROAD MARKINGS SHOWN IN SCHEDULE 6
(c) for use in the road markings shown in diagrams 1027.1, 1028.2, 1028.3, 1028.4, 1029 and 1033



Status: This is the original version (as it was originally made). This item of legislation is currently only available in its original format.

PART VII

PROPORTIONS AND FORM OF LETTERS, NUMERALS AND OTHER CHARACTERS

(Symbols for use on directional signs to indicate diversion routes)

SCHEDULE 13 PART VII

Regulation 13

PROPORTIONS AND FORM OF LETTERS, NUMERALS AND OTHER CHARACTERS
(Symbols for use on directional signs to indicate diversion routes)

