

SCHEDULE 1

Regulation 4(1)

EEC PATTERN APPROVAL AND INITIAL VERIFICATION

the eec signs and marks

The EEC Signs

1.—(1) The sign of EEC pattern approval is a stylized letter ϵ containing—

- (a) in the upper part, the distinguishing capital letter of the State which granted the approval (B for Belgium, DK for Denmark, D for the Federal Republic of Germany, E for Greece, EL for Spain, F for France, IRL for Ireland, I for Italy, L for Luxembourg, NL for the Netherlands, P for Portugal and UK for the United Kingdom) and the last two digits of the year of approval; and
- (b) in the lower part, an identification number determined by the metrological service of the State which granted approval.

(2) The following is an example of the sign of EEC pattern approval, in the form appropriate for an EEC pattern approval granted in the United Kingdom:



(3) The identification number in the lower part of the United Kingdom sign of EEC pattern approval shall be a number determined by the Secretary of State.

2.—(1) The sign of EEC limited pattern approval is the same as the sign of EEC pattern approval, with the addition of a letter P before the stylized letter ϵ described in paragraph 1 above, being a letter P of the same dimensions as the letter ϵ .

(2) The following is an example of the sign of EEC limited pattern approval, in the form appropriate for an EEC limited pattern approval granted in the United Kingdom:



(3) Paragraph 1(3) above applies to that part of the sign of EEC limited pattern approval which is the same as the sign of EEC pattern approval.

3.—(1) The sign of exemption from EEC pattern approval is the same as the sign of EEC pattern approval except that—

- (a) the stylized letter ϵ is reversed symmetrically about a vertical axis; and
- (b) any number appearing in the lower part of that letter is the reference number (if any) for the category of instruments in question given in the relevant Directive.

Status: This is the original version (as it was originally made). This item of legislation is currently only available in its original format.

(2) The following is an example of the sign of exemption from EEC pattern approval, in the form appropriate for an instrument constructed in the United Kingdom:



(3) In the case of an instrument constructed in the United Kingdom and not subject to EEC pattern approval, the lower part of the sign of exemption from EEC pattern approval shall be left blank if no reference number for the category of instruments in question has been given by the relevant Directive.

4.—(1) The sign of EEC pattern approval and exemption from EEC initial verification is the same as the sign of EEC pattern approval in a hexagon.

(2) The following is an example of the sign of EEC pattern approval and exemption from EEC initial verification in the form appropriate for an EEC pattern approval granted in the United Kingdom:



The EEC marks

5.—(1) The mark of EEC initial verification is composed of two stamps, described respectively in sub-paragraphs (2) and (3) below, or in the case of material measures of length alternatively of a single stamp described in sub-paragraph (4) below.

(2) The first stamp consists of a letter 'e' containing—

- (a) in the upper half, the distinguishing capital letter of the State where the examination to determine whether the stamp should be applied is carried out (B for Belgium, DK for Denmark, D for the Federal Republic of Germany, E for Greece, EL for Spain, F for France, IRL for Ireland, I for Italy, L for Luxembourg, NL for the Netherlands, P for Portugal and UK for the United Kingdom) together, where necessary, with one or two figures identifying a territorial or administrative sub-division; and

- (b) in the lower half, the identification number of the verifying agent or office.

(3) The second stamp consists of the last two digits of the year when the examination to determine whether the stamp should be applied is carried out, in a hexagon.

(4) The single stamp consists of a lower-case 'e' in a hexagon containing—

- (a) in the upper half, the distinguishing capital letter of the State where the application to determine whether the stamp should be applied is carried out as set out in sub-paragraph (2) (a) above; and

- (b) in the lower half, the last two digits of the year when the said examination is carried out.

(5) The shape and dimensions of the elements of the mark of EEC initial verification are given in the Annex to this Schedule, and an example of the mark, in the form appropriate for an EEC initial verification carried out in the United Kingdom, is also given.

Status: This is the original version (as it was originally made). This item of legislation is currently only available in its original format.

(6) Any mark applied in the United Kingdom as a mark, or part of a mark, of EEC initial verification shall conform to the requirements of the Annex to this Schedule with respect to the shape and dimensions of the elements of the mark.

(7) In the case of a United Kingdom mark of EEC initial verification, the identification number in the lower half of the letter 'e' which constitutes the stamp described in sub-paragraph (2) above shall be the identification number of the person carrying out the examination.

6.—(1) The mark of EEC partial verification consists solely of the first of the two stamps which constitute the mark of EEC initial verification, and the relevant provisions of paragraph 5 above shall apply accordingly.

(2) The mark of EEC partial verification also serves as a seal.

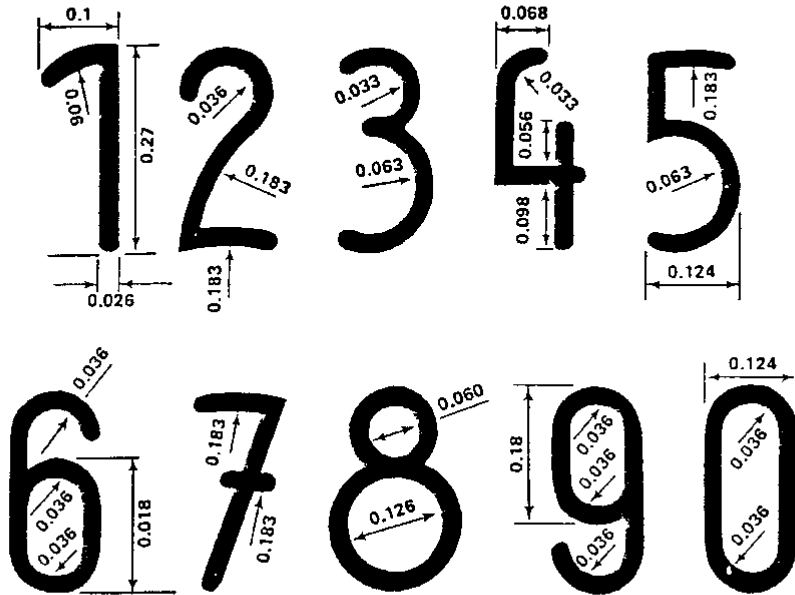
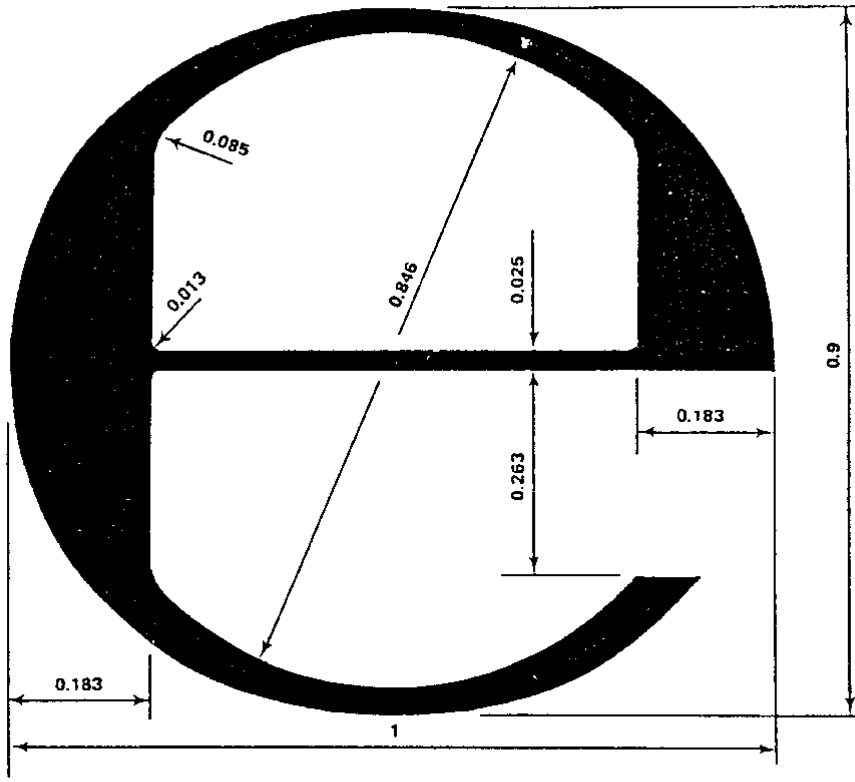
Annex

The attached drawings show the shape, dimensions and out-line of the letters and numbers for the mark of EEC initial verification and the mark of EEC partial verification. Drawing A shows the constituent parts of the stamp described in paragraph 5(2) above; the mark of EEC partial verification described in paragraph 6 above consists of this stamp only. Drawing B shows the constituent parts of the second stamp, described in paragraph 5(3) above. Drawing C is an example of the mark of EEC initial verification consisting of the stamp described in paragraph 5(2) above, and that described in paragraph 5(3) above. Drawing D is an example of the mark of EEC initial verification, consisting of the stamp described in paragraph 5(4) above.

The dimensions given in the drawings are relative values; they are a function of the diameter of the circle described about the letter 'e' and about the field of the hexagon. The actual diameter of the describing circles shall be chosen from 1.6 mm, 3.2 mm, 6.3 mm and 12.5 mm.

Drawing "A"
Drawing "A"

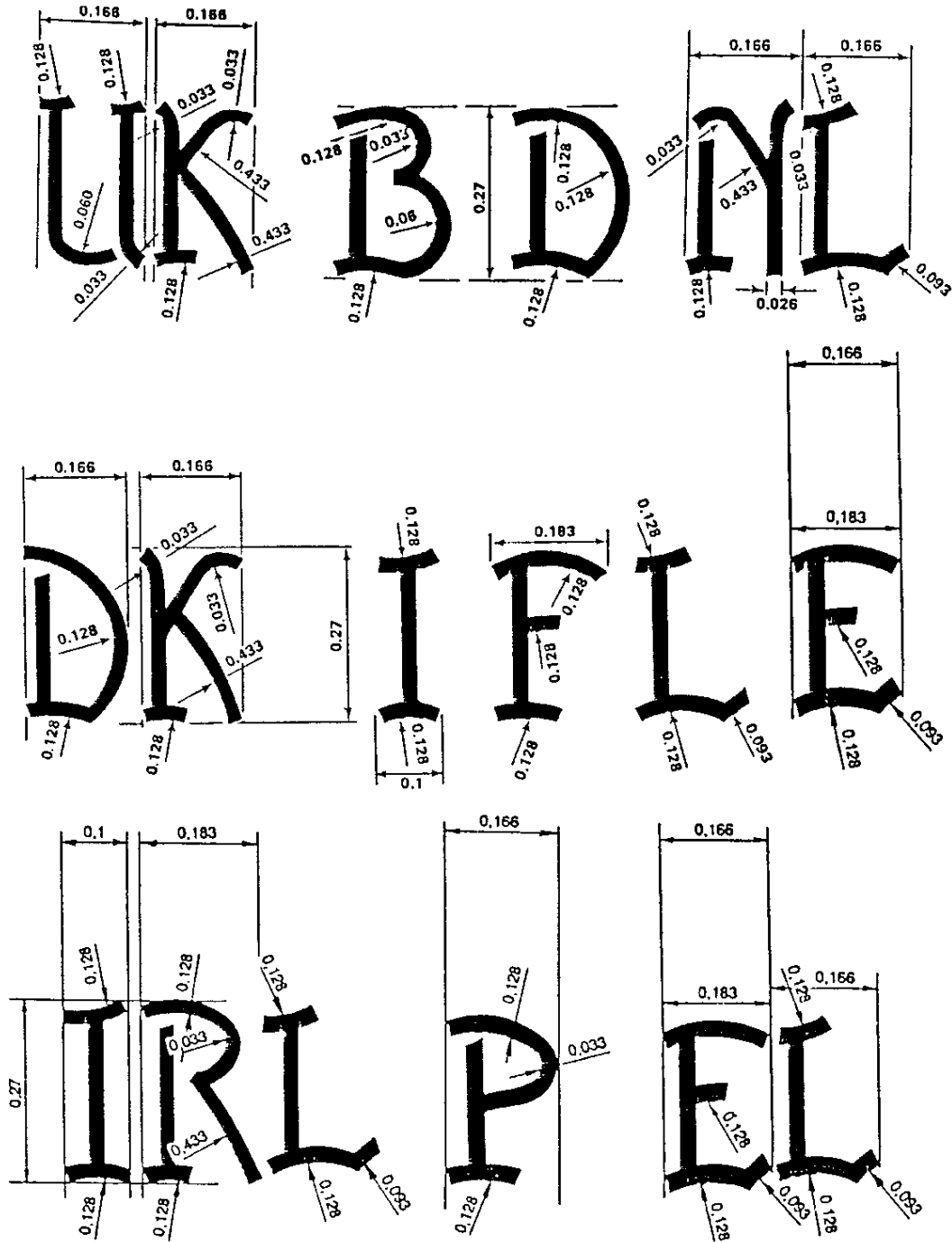
Status: This is the original version (as it was originally made). This item of legislation is currently only available in its original format.



DRAWING 'A'

Status: This is the original version (as it was originally made). This item of legislation is currently only available in its original format.

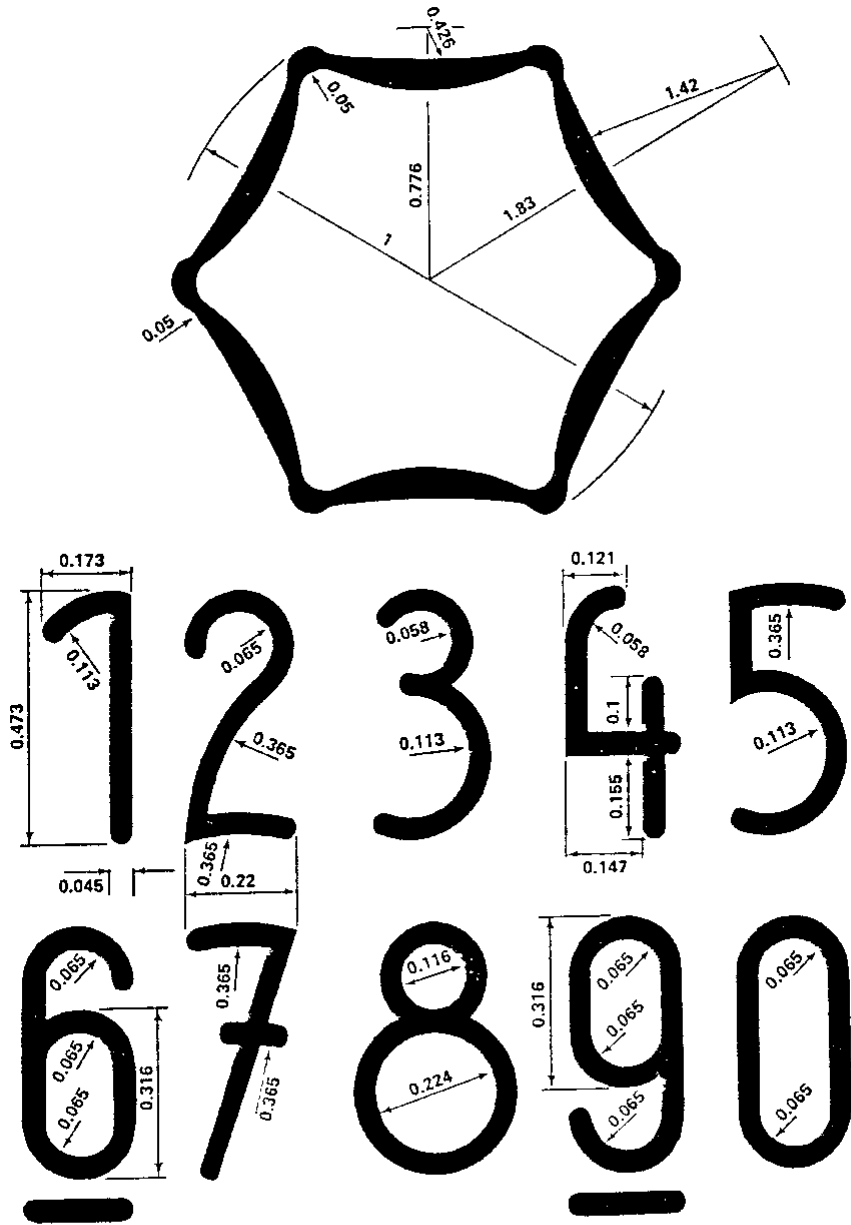
Drawing "A" (continued)
Drawing "A" (continued)



DRAWING 'A' (continued)

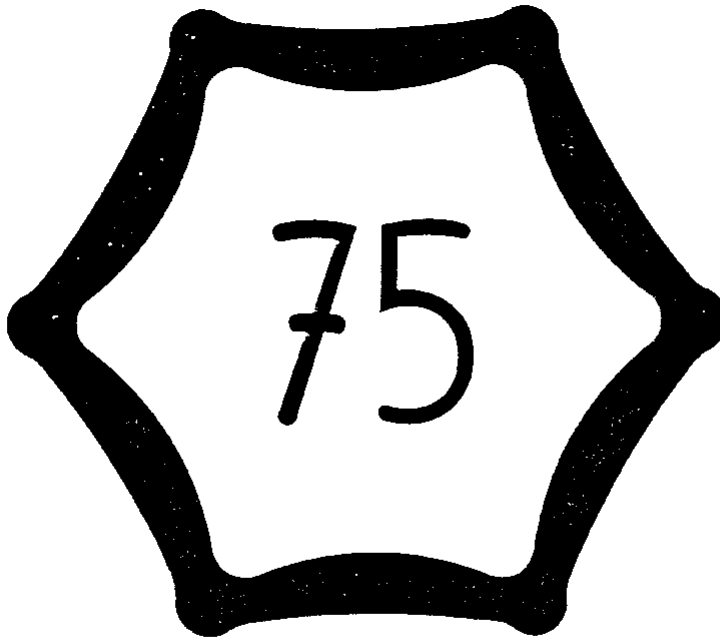
Drawing "B"
Drawing "B"

Status: This is the original version (as it was originally made). This item of legislation is currently only available in its original format.



Drawing 'B'

Drawing "C"
Drawing "C"



Drawing 'C'

Drawing "D"
Drawing "D"

Status: This is the original version (as it was originally made). This item of legislation is currently only available in its original format.



Drawing 'D'