
 STATUTORY INSTRUMENTS

1981 No. 1688

ROAD TRAFFIC

**The Motor Vehicles (Construction and Use)
(Amendment) (No. 7) Regulations 1981**

Made - - - 24th November 1981
Laid before Parliament 3rd December 1981
Coming into Operation 24th December 1981

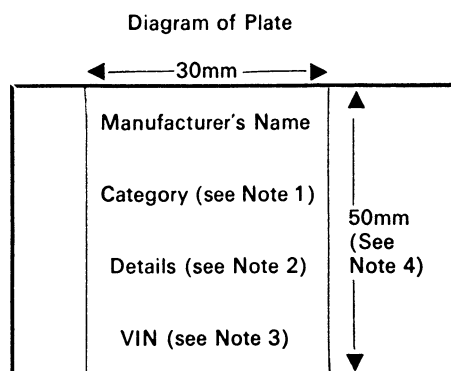
The Secretary of State for Transport, in exercise of the powers conferred by section 40(1) and (3) of the Road Traffic Act 1972(a) and now vested in him(b), and of all other enabling powers, and after consultation with representative organisations in accordance with the provisions of section 199(2) of that Act, hereby makes the following Regulations:—

1. These Regulations shall come into operation on 24th December 1981 and may be cited as the Motor Vehicles (Construction and Use) (Amendment) (No. 7) Regulations 1981.

2. The Motor Vehicles (Construction and Use) Regulations 1978(c) are further amended so that in Schedule 12A, in paragraph 2—

(a) for the Diagram of Plate the following diagram is substituted:—

“



”;

(a) 1972 c. 20.

(b) S.I. 1979/571 and 1981/238.

(c) S.I. 1978/1017; the relevant amending instrument is S.I. 1981/915.

(b) after Note 3 the following Note is added:—

“4. In the case of a plate fitted to a moped this dimension shall be 40 millimetres.”.

24th November 1981.

David Howell,
Secretary of State for Transport.

EXPLANATORY NOTE

(This Note is not part of the Regulations.)

These Regulations further amend the Motor Vehicles (Construction and Use) Regulations 1978 so that the minimum dimensions of a distinguishing plate for a moped are 30 millimetres by 40 millimetres instead of 30 millimetres by 50 millimetres.

SI 1981/1688
ISBN 0-11-017688-X



780110 176888