

II

(Non-legislative acts)

REGULATIONS

COMMISSION DELEGATED REGULATION (EU) 2019/254

of 9 November 2018

on the adaptation of Annex III to Regulation (EU) No 1315/2013 of the European Parliament and of the Council on Union guidelines for the development of the trans-European transport network

(Text with EEA relevance)

THE EUROPEAN COMMISSION,

Having regard to the Treaty on the Functioning of the European Union,

Having regard to Regulation (EU) No 1315/2013 of the European Parliament and of the Council of 11 December 2013 on Union guidelines for the development of the trans-European transport network and repealing Decision No 661/2010/EU ⁽¹⁾, and in particular Article 49(6) thereof,

Whereas:

- (1) Regulation (EU) No 1315/2013 provides for the possibility to adapt the indicative maps of the trans-European transport network (TEN-T) which has been extended to specific neighbouring countries, based on high-level agreements on transport infrastructure networks between the Union and the neighbouring countries concerned.
- (2) High-level agreements on the adaptation of the indicative extension of the comprehensive TEN-T maps and on the identification of the core network connections on the comprehensive network maps were signed between the Union and Eastern Partnership countries (Republic of Armenia, Azerbaijan, Belarus, Republic of Moldova and Ukraine) on 24 November 2017. The high-level agreement between the Union and Georgia was signed on 18 July 2018. The agreements concern the lines of the railway and road networks, as well as ports and airports. The adaptation of the indicative comprehensive network maps and, in particular, the identification of the indicative core network should allow the Union to better target its cooperation with the Eastern Partnership countries concerned.
- (3) Regulation (EU) No 1315/2013 should therefore be amended accordingly,

HAS ADOPTED THIS REGULATION:

Article 1

Annex III to Regulation (EU) No 1315/2013 is amended as set out in the Annex to this Regulation.

Article 2

This Regulation shall enter into force on the twentieth day following that of its publication in the *Official Journal of the European Union*.

⁽¹⁾ OJ L 348, 20.12.2013, p. 1.

This Regulation shall be binding in its entirety and directly applicable in all Member States.

Done at Brussels, 9 November 2018.

For the Commission
The President
Jean-Claude JUNCKER

ANNEX

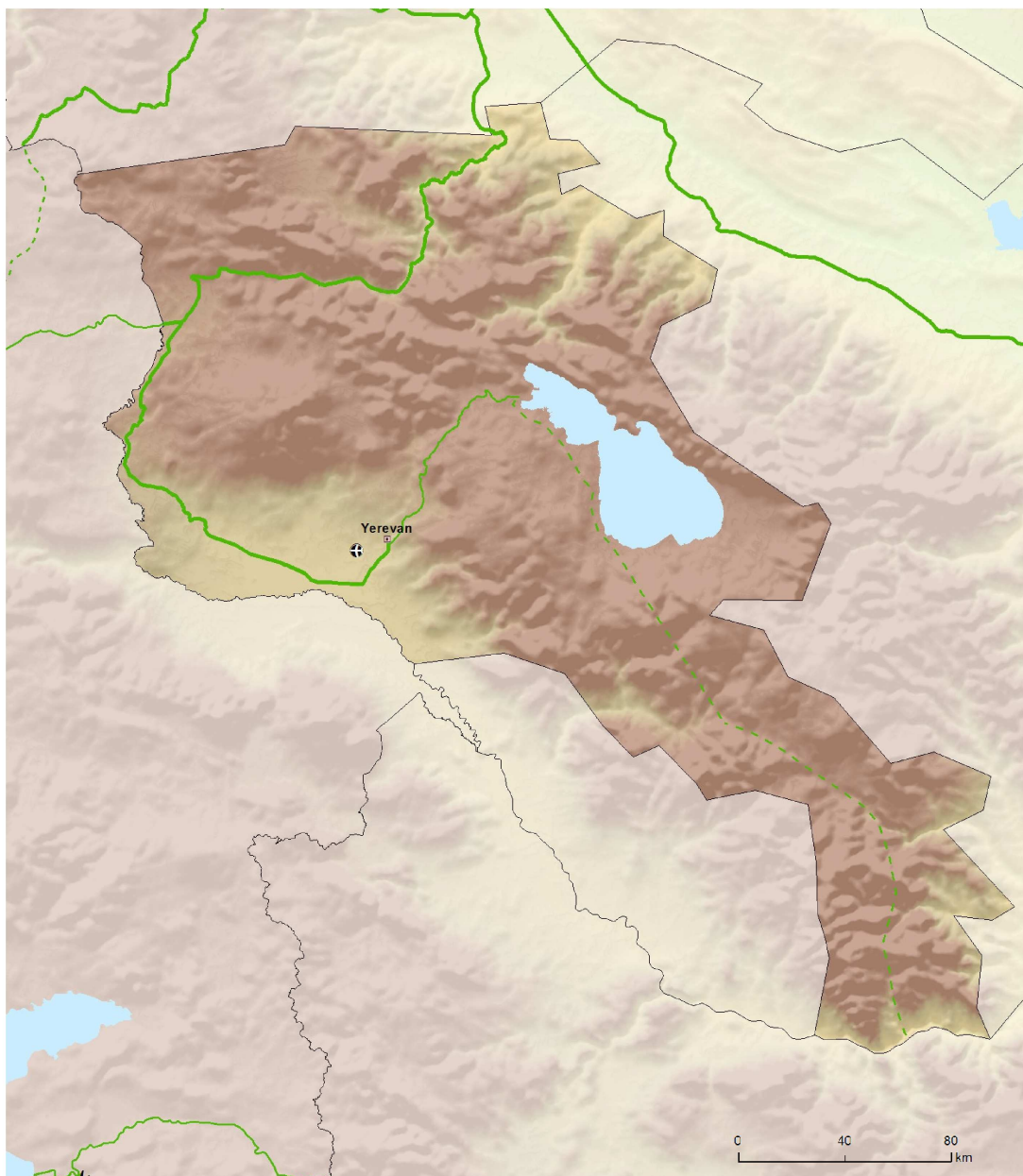
Annex III is amended as follows:

- (1) in Section 15 (Republic of Armenia, Azerbaijan, Georgia) the following maps are added (15.3 and 15.4 concerning the Republic of Armenia):



‘15.3 Indicative maps of the core network in the Republic of Armenia, railways
 Comprehensive Network: Railways, ports, rail-road-terminals and airports
 Core Network: Railways, ports, rail-road-terminals and airports
 Eastern Partnership Transport Network: Republic of Armenia

15



Comprehensive		Core		Comprehensive		Core		Comprehensive		Core	
Conventional rail / Completed	Conventional rail / Completed	Conventional rail / To be upgraded	Conventional rail / To be upgraded	High speed rail / Completed	High speed rail / Completed	To be upgraded to high speed rail	To be upgraded to high speed rail	Airports	Airports	Ports	Ports
Conventional rail / Planned	Conventional rail / Planned			High speed rail / Planned	High speed rail / Planned			RRT	RRT		



15.4 Indicative maps of the core network in the Republic of Armenia, roads
Comprehensive & Core Networks: Roads, ports, rail-road terminals and airports
Eastern Partnership Transport Network: Republic of Armenia

15



Comprehensive		Core		Comprehensive		Core		Comprehensive		Core	
Road / Completed	Road / Completed	Road / To be upgraded	Road / To be upgraded		Ports	Ports	Ports		Airports	Airports	Airports
Road / Planned	Road / Planned						RRT				

(2) in Section 15 (Republic of Armenia, Azerbaijan, Georgia) the following maps are added (15.5 and 15.6 concerning Azerbaijan):



‘15.5 Indicative maps of the core network in Azerbaijan, railways
 Comprehensive Network: Railways, ports, rail-road-terminals and airports
 Core Network: Railways, ports, rail-road-terminals and airports
 Eastern Partnership Transport Network: Azerbaijan

15



Comprehensive		Core		Comprehensive		Core		Comprehensive		Core	
		Conventional rail / Completed			High speed rail / Completed			Airports			Ports
		Conventional rail / To be upgraded			To be upgraded to high speed rail			Ports			RRT
		Conventional rail / Planned			High speed rail / Planned						



15.6 Indicative maps of the core network in Azerbaijan, roads
Comprehensive & Core Networks: Roads, ports, rail-road terminals and airports
Eastern Partnership Transport Network: Azerbaijan

15



Comprehensive		Core		Comprehensive		Core		Comprehensive		Core	
Road / Completed	Road / Completed	Road / To be upgraded	Road / To be upgraded	Ports	Ports	RRT	RRT	Airports	Airports	Airports	Airports
Road / Planned	Road / Planned	Road / Planned	Road / Planned								

(3) in Section 15 (Republic of Armenia, Azerbaijan, Georgia) the following maps are added (15.7 and 15.8 concerning Georgia):



‘15.7 Indicative maps of the core network in Georgia, railways
 Comprehensive Network: Railways, ports, rail-road-terminals and airports
 Core Network: Railways, ports, rail-road-terminals and airports
 Eastern Partnership Transport Network: Georgia

15



Comprehensive		Core		Comprehensive		Core		Comprehensive		Core	
Conventional rail / Completed	Conventional rail / To be upgraded	Conventional rail / Planned	High speed rail / Completed	To be upgraded to high speed rail	High speed rail / Planned		Airports	Ports		RRT	



15.8 Indicative maps of the core network in Georgia, roads Comprehensive & Core Networks: Roads, ports, rail-road terminals and airports Eastern Partnership Transport Network: Georgia



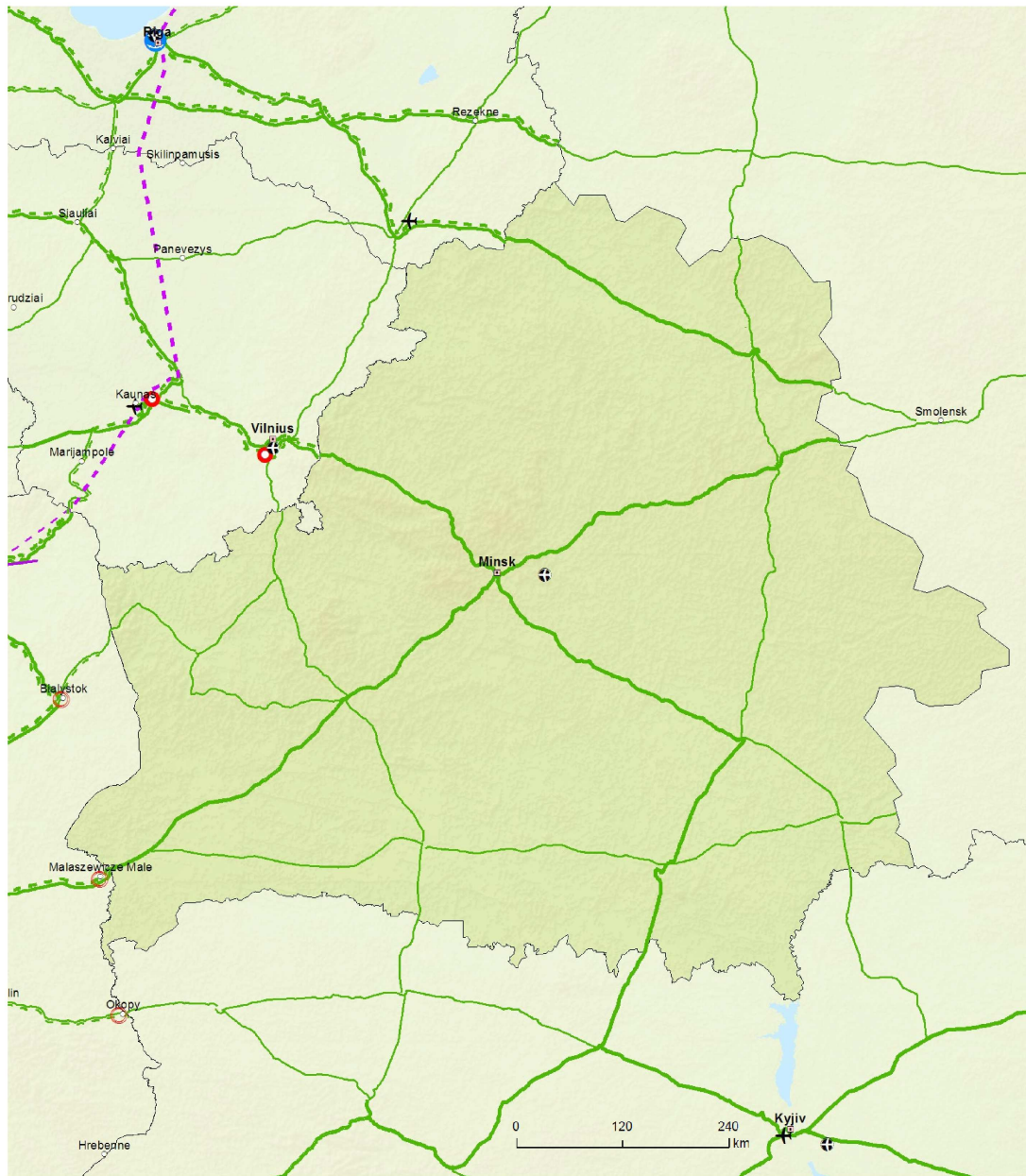
Comprehensive		Core		Comprehensive		Core		Comprehensive		Core	
Road / Completed	Road / To be upgraded	Road / Completed	Road / To be upgraded	Ports	Ports	Airports	Airports	RRT	RRT	Airports	Airports
Road / Planned	Road / Planned										

(4) in Section 16 (Belarus, Republic of Moldova, Ukraine) the following maps are added (16.3 and 16.4 concerning Belarus):



16.3 Indicative maps of the core network in Belarus, railways
Comprehensive Network: Railways, ports, rail-road-terminals and airports
Core Network: Railways, ports, rail-road-terminals and airports
Eastern Partnership Transport Network: Belarus

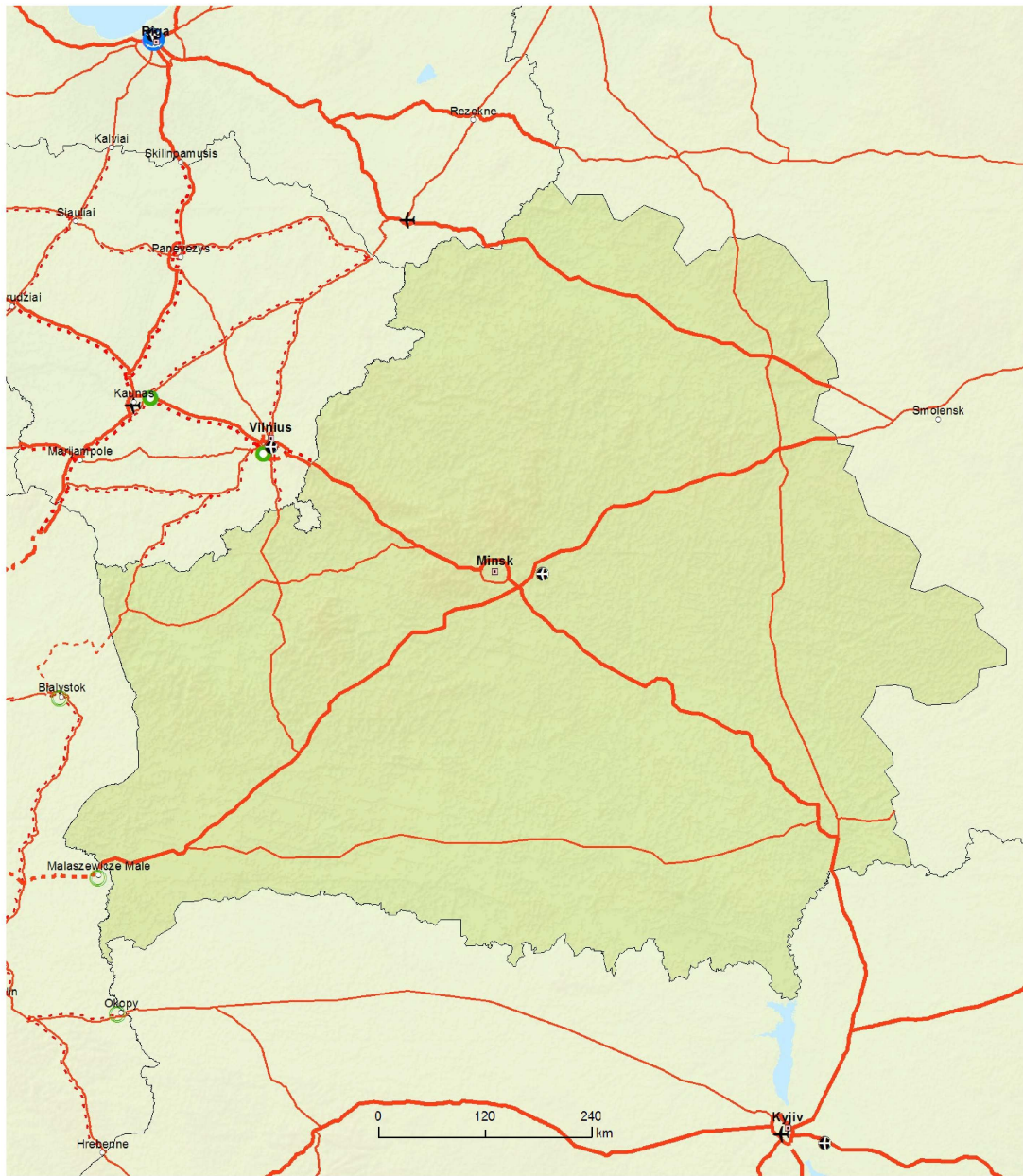
16



Comprehensive		Core		Comprehensive		Core		Comprehensive		Core	
Conventional rail / Completed	Conventional rail / To be upgraded	Conventional rail / Completed	Conventional rail / To be upgraded	High speed rail / Completed	High speed rail / To be upgraded	High speed rail / Completed	High speed rail / To be upgraded	Airports	Ports	RRT	RRT
Conventional rail / Planned				High speed rail / Planned		High speed rail / Planned					



16.4 Indicative maps of the core network in Belarus, roads
Comprehensive & Core Networks: Roads, ports, rail-road terminals and airports
Eastern Partnership Transport Network: Belarus



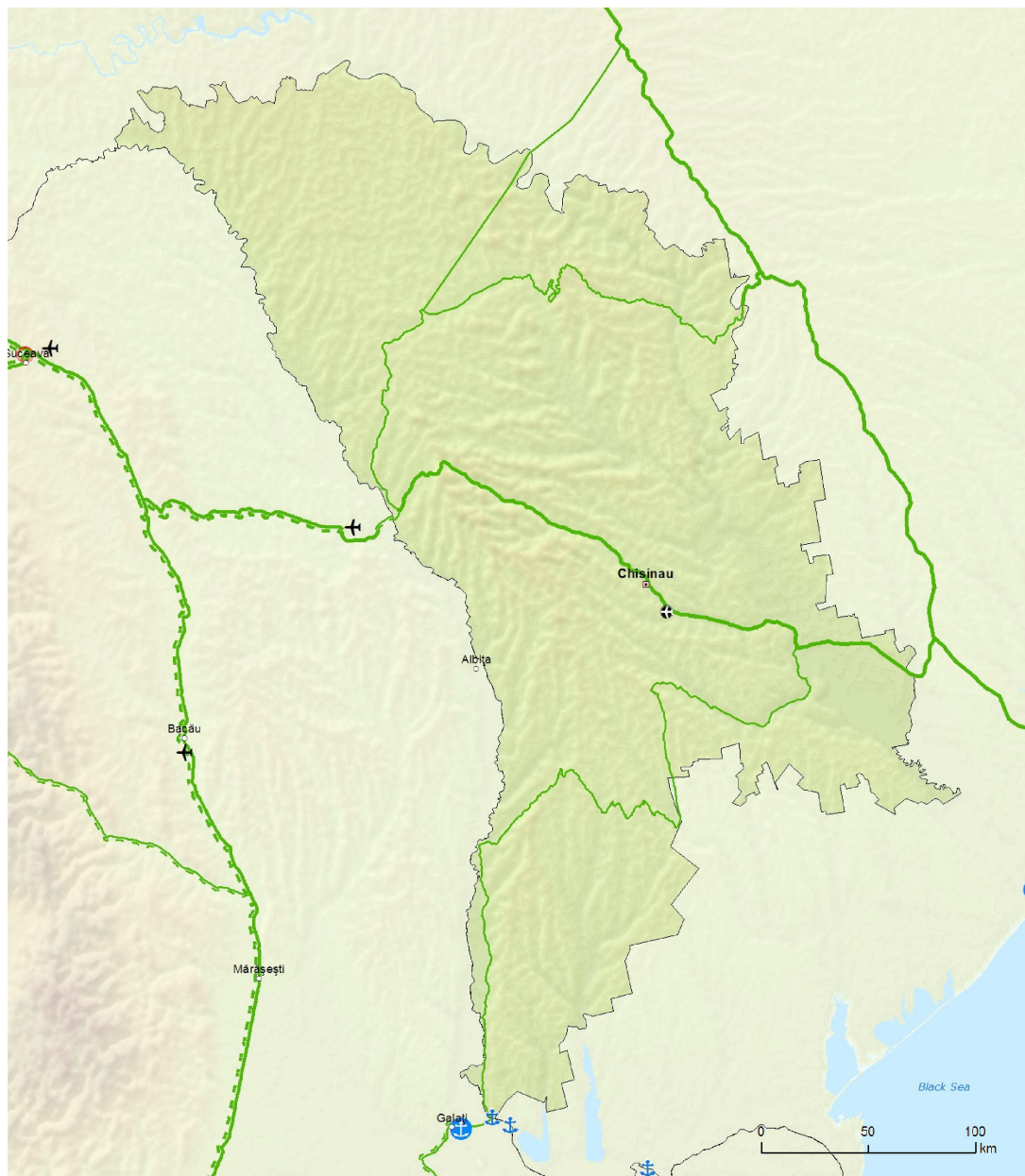
Comprehensive		Core		Comprehensive		Core	
Road / To be upgraded	Road / Completed	Road / To be upgraded	Road / Completed	Ports	Ports	Airports	Airports
Road / Planned	Road / Completed	RRT	RRT				

(5) in Section 16 (Belarus, Republic of Moldova, Ukraine) the following maps are added (16.5 and 16.6 concerning the Republic of Moldova):



16.5 Indicative maps of the core network in the Republic of Moldova, railways
 Comprehensive Network: Railways, ports, rail-road-terminals and airports
 Core Network: Railways, ports, rail-road-terminals and airports
 Eastern Partnership Transport Network: Republic of Moldova

16

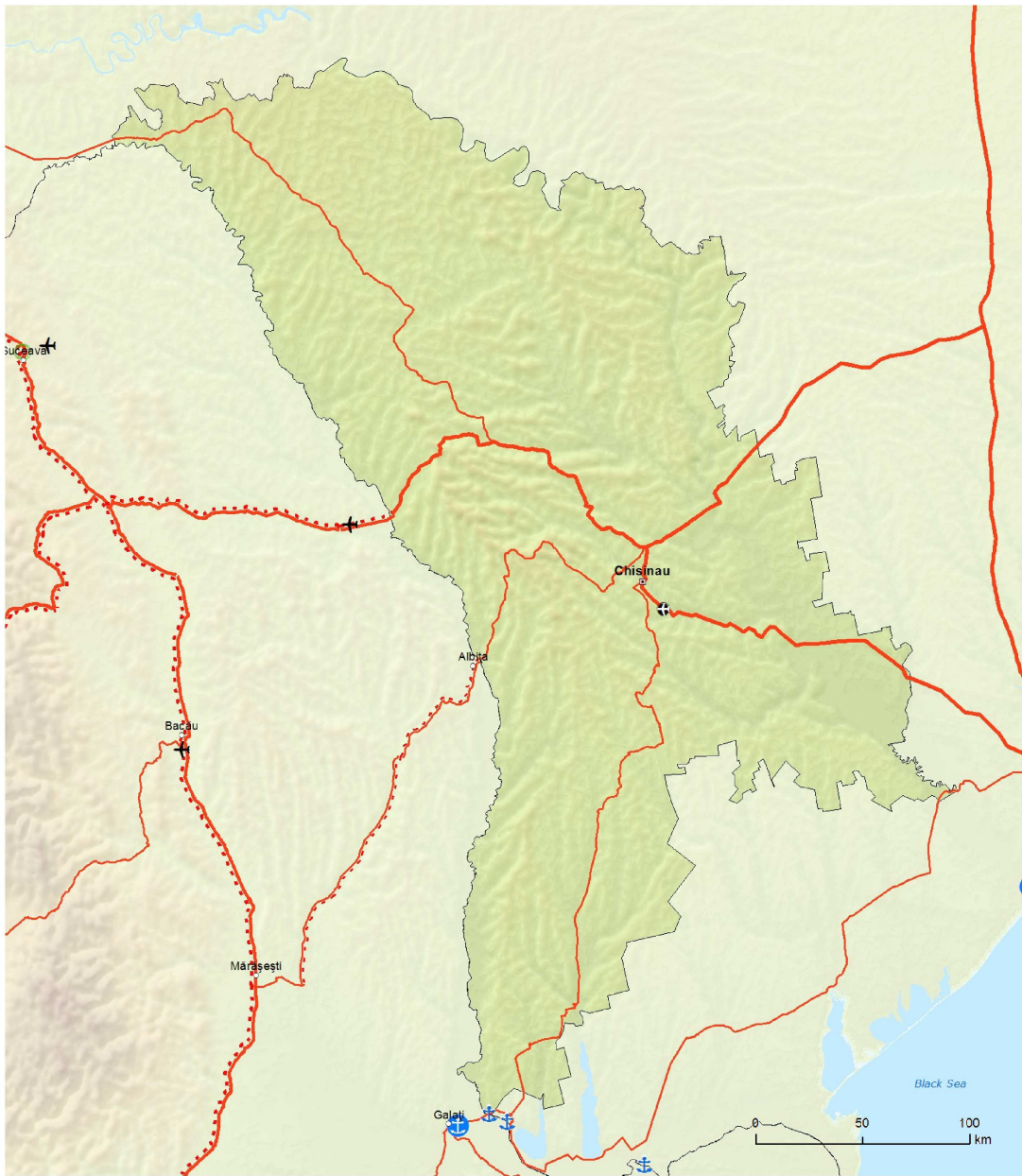


Comprehensive		Core		Comprehensive		Core		Comprehensive		Core		
		Conventional rail / Completed					High speed rail / Completed					To be upgraded to high speed rail
		Conventional rail / To be upgraded					High speed rail / Planned					High speed rail / Planned
		Conventional rail / Planned					Airports					Ports
							RRT					



16.6 Indicative maps of the core network in the Republic of Moldova, roads Comprehensive & Core Networks: Roads, ports, rail-road terminals and airports Eastern Partnership Transport Network: Republic of Moldova

16



Comprehensive		Core		Comprehensive		Core		Comprehensive		Core	
		Road / Completed				Ports				Airports	
		Road / To be upgraded				RRT					
		Road / Planned									

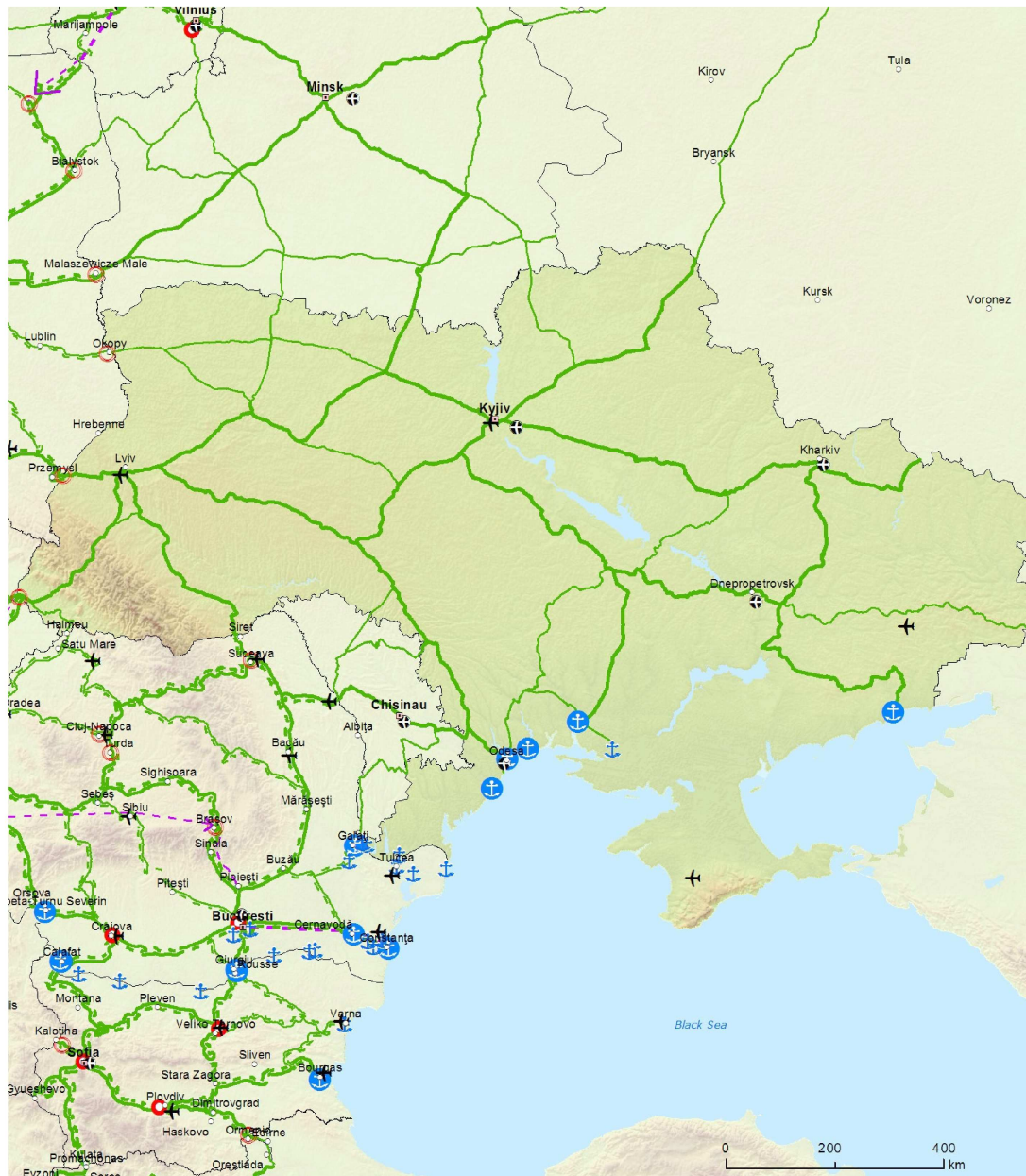
TENtec

(6) in Section 16 (Belarus, Republic of Moldova, Ukraine) the following maps are added (16.7 and 16.8 concerning Ukraine):



16.7 Indicative maps of the core network in Ukraine, railways
Comprehensive Network: Railways, ports, rail-road-terminals and airports
Core Network: Railways, ports, rail-road-terminals and airports
Eastern Partnership Transport Network: Ukraine

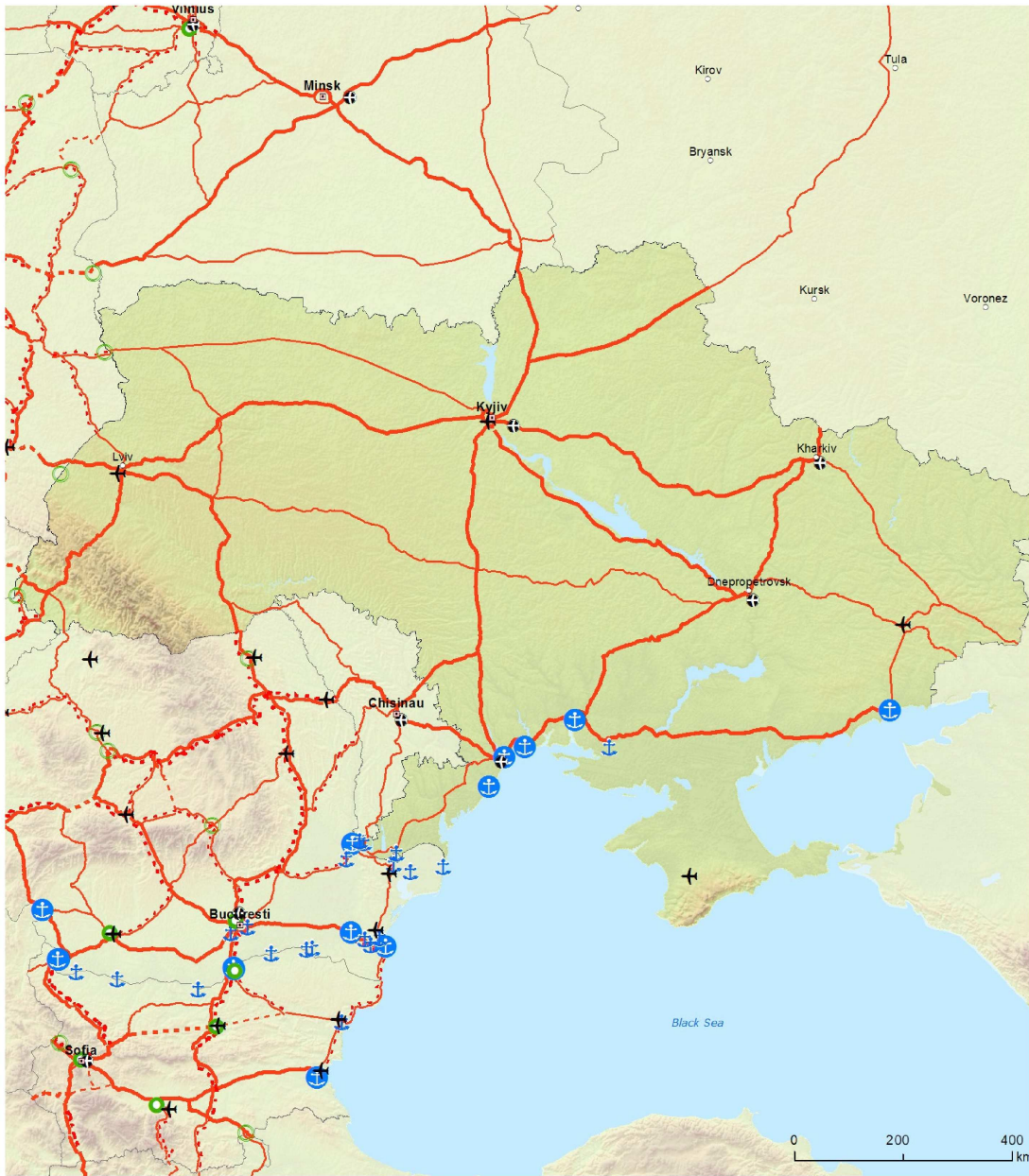
16



Comprehensive		Core		Comprehensive		Core		Comprehensive		Core	
Conventional rail / Completed		Conventional rail / To be upgraded		High speed rail / Completed		To be upgraded to high speed rail		Airports		Ports	
Conventional rail / Planned				High speed rail / Planned				RRT			



16.8 Indicative maps of the core network in Ukraine, roads
Comprehensive & Core Networks: Roads, ports, rail-road terminals and airports
Eastern Partnership Transport Network: Ukraine



Comprehensive		Core		Comprehensive		Core		Comprehensive		Core	
Road / Completed	Road / To be upgraded	Road / Completed	Road / To be upgraded	Ports	Ports	Airports	Airports	RRT	RRT	Airports	Airports