

Commission Delegated Regulation (EU) No 473/2014 of 17 January 2014 amending Regulation (EU) No 1315/2013 of the European Parliament and of the Council as regards supplementing Annex III thereto with new indicative maps (Text with EEA relevance)

COMMISSION DELEGATED REGULATION (EU) No 473/2014

of 17 January 2014

amending Regulation (EU) No 1315/2013 of the European Parliament and of the Council as regards supplementing Annex III thereto with new indicative maps

(Text with EEA relevance)

THE EUROPEAN COMMISSION,

Having regard to the Treaty on the Functioning of the European Union,

Having regard to Regulation (EU) No 1315/2013 of the European Parliament and of the Council of 11 December 2013 on Union guidelines for the development of the trans-European transport network and repealing Decision No 661/2010/EU⁽¹⁾, and in particular Article 49(6) thereof,

Whereas:

- (1) Regulation (EU) No 1315/2013 provides for the possibility to add indicative maps of the trans-European transport network extended to specific neighbouring countries based on high-level agreements on transport infrastructure networks between the Union and the neighbouring countries concerned.
- (2) A high-level agreement between the Union, Russia and Belarus has been reached in the framework of the Northern Dimension Partnership on Transport and Logistics (NDPTL) on 21 November 2012. A high level agreement between the Union and Belarus, Ukraine, Moldova, Georgia, Armenia and Azerbaijan has been reached in the framework of the Eastern Partnership on 9 October 2013.
- (3) Adding indicative maps of the transport networks, connected to the networks defined in Regulation (EU) No 1315/2013, would allow to better target the Union cooperation with the third countries in question.
- (4) The high-level agreements with the neighbouring countries concern the lines of the railway and road networks, as well as the ports, airports and rail-road terminals. The status of the railways and roads in terms of completion of the infrastructure was not part of the agreements. Therefore, the railways and roads were presented in the context of the high-level agreements as ‘completed’,

HAS ADOPTED THIS REGULATION:

Article 1

Annex III to Regulation (EU) No 1315/2013 is amended in accordance with the Annex to this Delegated Regulation.

Changes to legislation: There are currently no known outstanding effects for the
Commission Delegated Regulation (EU) No 473/2014. (See end of Document for details)

Article 2

This Regulation shall enter into force on the twentieth day following that of its publication in the *Official Journal of the European Union*.

This Regulation shall be binding in its entirety and directly applicable in all Member States.

Done at Brussels, 17 January 2014.

For the Commission

The President

José Manuel BARROSO

ANNEX

Annex III to Regulation (EU) No 1315/2013 is amended as follows:

- (1) The map under the heading ‘Map Finder Chart for Neighbouring Countries’ is replaced by the following:

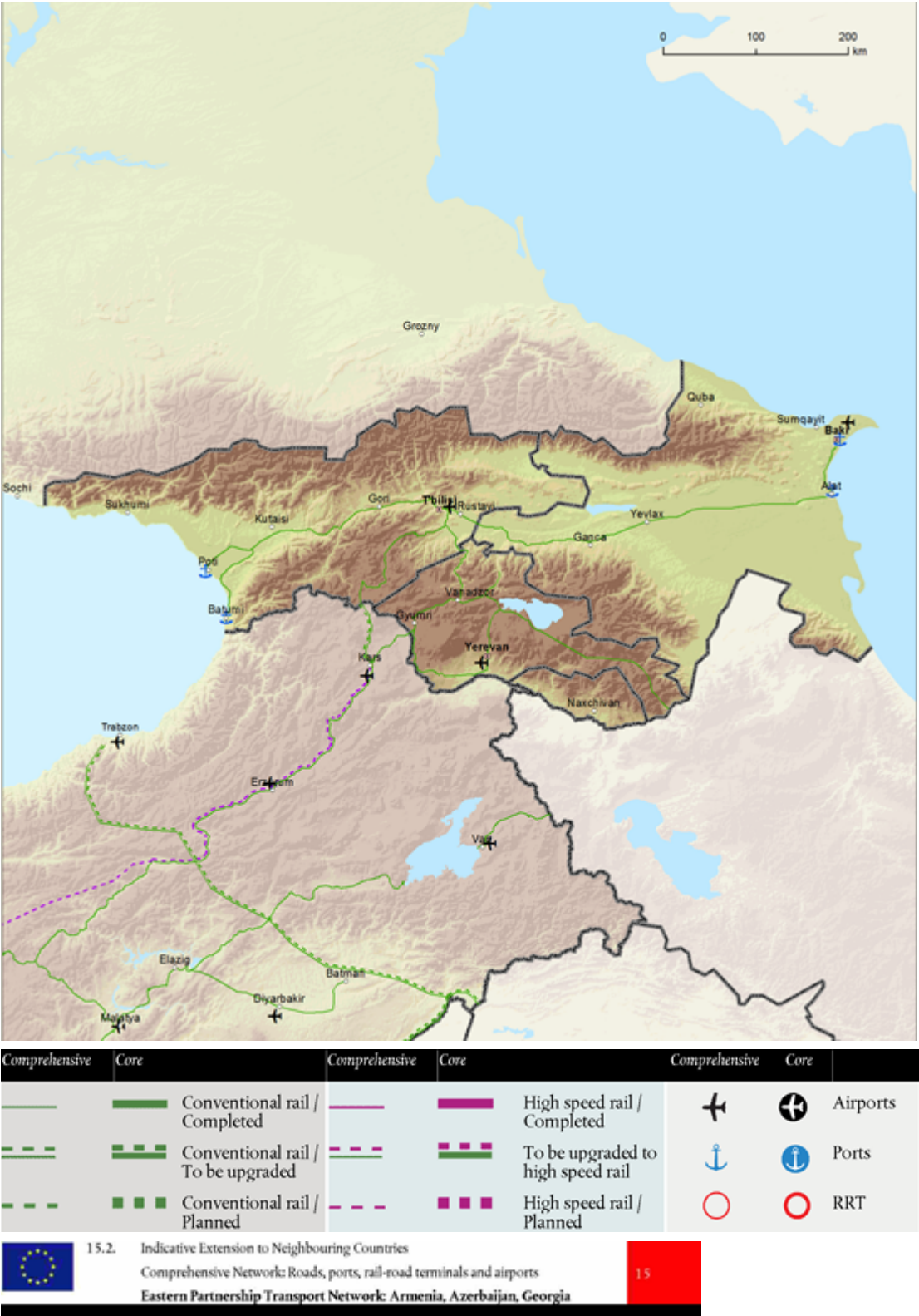


- (2) The following maps 15.1 to 17.2 are added:



- 15.1. Indicative Extension to Neighbouring Countries
Comprehensive Network: Railways, ports, rail-road terminals and airports
Eastern Partnership Transport Network: Armenia, Azerbaijan, Georgia

Changes to legislation: There are currently no known outstanding effects for the Commission Delegated Regulation (EU) No 473/2014. (See end of Document for details)

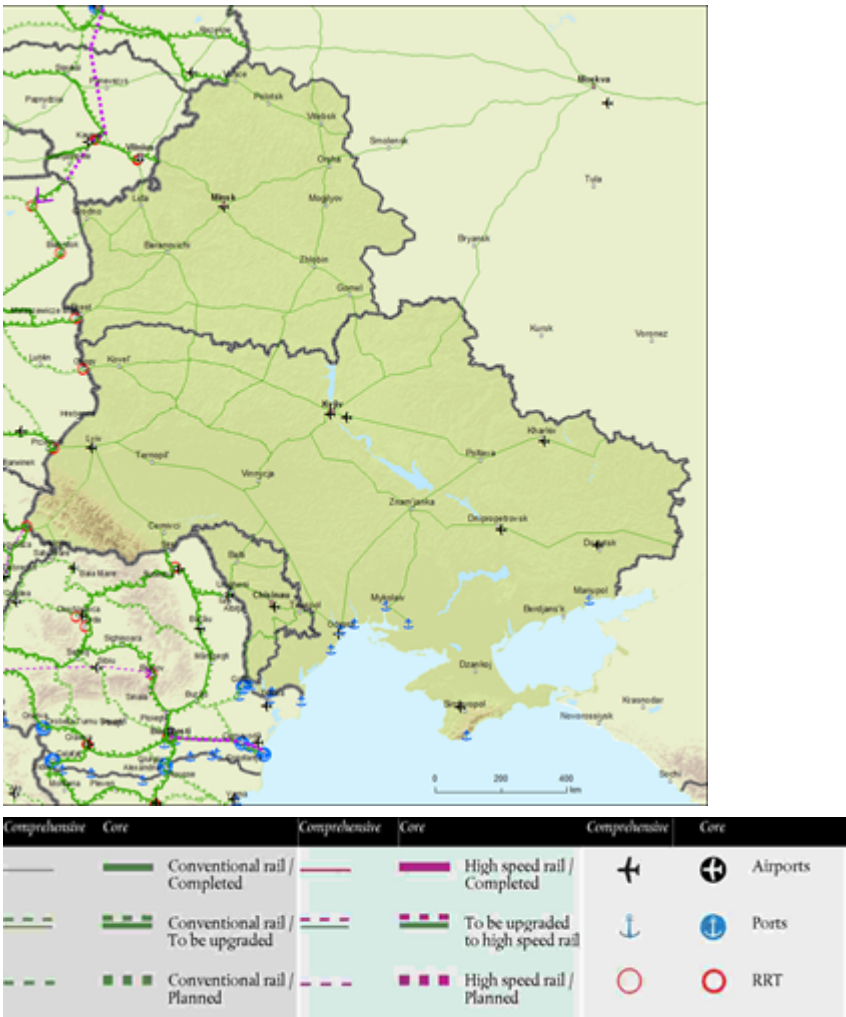


A detailed map of Armenia and its surrounding regions. The map shows the Black Sea to the north and west, and the Caspian Sea to the east. Major cities are marked with black dots and labels, including Yerevan (the capital), Vanadzor, Gyumri, Kars, Erzurum, Trabzon, and others. The map also shows the borders of Armenia, Georgia, Azerbaijan, and Turkey. A scale bar in the top right corner indicates distances in kilometers (0, 100, 200 km). The map uses a color-coded system to represent different geographical features: green for low-lying areas, brown for mountains, and blue for water bodies. A network of red lines represents major roads, and a network of black lines represents administrative boundaries.



Eastern Partnership Transport Network: Belarus, Moldova, Ukraine

Changes to legislation: There are currently no known outstanding effects for the Commission Delegated Regulation (EU) No 473/2014. (See end of Document for details)



16.2. Indicative Extension to Neighbouring Countries
Comprehensive Network: Roads, ports, rail-road terminals and airports
Eastern Partnership Transport Network: Belarus, Moldova, Ukraine

Changes to legislation: There are currently no known outstanding effects for the Commission Delegated Regulation (EU) No 473/2014. (See end of Document for details)



Comprehensive	Core	Comprehensive	Core	Comprehensive	Core
	Road / Completed		Ports		Airports
	Road / To be upgraded		RRT		
	Road / Planned				

Changes to legislation: There are currently no known outstanding effects for the Commission Delegated Regulation (EU) No 473/2014. (See end of Document for details)



Comprehensive	Core	Comprehensive	Core	Comprehensive	Core
		Conventional rail / Completed			High speed rail / Completed
		Conventional rail / To be upgraded			To be upgraded to high speed rail
		Conventional rail / Planned			High speed rail / Planned
		Airports			Ports
		RRT			



17.2.

Indicative Extension to Neighbouring Countries

Comprehensive Network: Roads, ports, rail-road terminals and airports

Northern Dimension Partnership on Transport and Logistics: Belarus, Russian Federation

17

Changes to legislation: There are currently no known outstanding effects for the Commission Delegated Regulation (EU) No 473/2014. (See end of Document for details)



Changes to legislation: There are currently no known outstanding effects for the
Commission Delegated Regulation (EU) No 473/2014. (See end of Document for details)

(1) [OJ L 348, 20.12.2013, p. 1.](#)

Changes to legislation:

There are currently no known outstanding effects for the Commission Delegated Regulation (EU) No 473/2014.