

This document is meant purely as a documentation tool and the institutions do not assume any liability for its contents

► **B**

**COMMISSION REGULATION (EC) No 2216/2004  
of 21 December 2004**

**for a standardised and secured system of registries pursuant to Directive 2003/87/EC of the European Parliament and of the Council and Decision No 280/2004/EC of the European Parliament and of the Council**

**(Text with EEA relevance)**

(OJ L 386, 29.12.2004, p. 1)

Amended by:

|                    |  | Official Journal |      |            |
|--------------------|--|------------------|------|------------|
|                    |  | No               | page | date       |
| ► <b><u>M1</u></b> | Commission Regulation (EC) No 916/2007 of 31 July 2007   | L 200            | 5    | 1.8.2007   |
| ► <b><u>M2</u></b> | Commission Regulation (EC) No 994/2008 of 8 October 2008 | L 271            | 3    | 11.10.2008 |



**COMMISSION REGULATION (EC) No 2216/2004**

**of 21 December 2004**

**for a standardised and secured system of registries pursuant to Directive 2003/87/EC of the European Parliament and of the Council and Decision No 280/2004/EC of the European Parliament and of the Council**

(Text with EEA relevance)

TABLE OF CONTENTS

|             |  |
|-------------|--|
| Chapter I   | Subject matter and definitions   |
| Chapter II  | Registries and transaction logs  |
| Chapter III | Contents of the registries   |
| Section 1   | Reporting and Confidentiality  |
| Section 2   | Accounts   |
| Section 3   | Party accounts   |
| Section 4   | Operator holding accounts  |
| Section 5   | Person holding accounts  |
| Section 6   | Tables   |
| Section 7   | Codes and identifiers  |
| Chapter IV  | Checks and processes   |
| Section 1   | Blocking of accounts   |
| Section 2   | Automated checks and the data reconciliation process   |
| Section 3   | Execution and finalisation of processes  |
| Chapter V   | Transactions   |
| Section 1   | Allocation and issue of allowances for the 2005-2007 period                                      |
| Section 2   | Allocation and issue of allowances for the 2008-2012 period and each subsequent five year period |
| Section 3   | Transfers and eligibility  |
| Section 4   | Verified emissions   |
| Section 5   | Surrender of allowances  |
| Section 6   | Cancellation and retirement  |
| Section 7   | Cancellation and replacement   |
| Section 8   | Voluntary cancellation and retirement  |
| Chapter Va  | Operation of registries of member states which do not have aaus                                  |
| Chapter VI  | Security standards, authentication and access rights   |
| Chapter VII | Availability and reliability of information  |

**▼B**

|                |  |
|----------------|--|
| Chapter VIII   | Records and fees   |
| Chapter IX     | Final provisions   |
| Annex I        |  |
| Annex II       |  |
| Annex III      |  |
| Annex IV       |  |
| Annex V        |  |
| Annex VI       |  |
| Table VI-1:    | Unit Identification Code   |
| Table VI-2:    | Valid Initial Unit Type – Supplementary Unit Type                                  |
| Table VI-3:    | Account Identification Code  |
| Table VI-4:    | Permit Identification Code   |
| Table VI-5:    | Account Holder Identification Code   |
| Table VI-6:    | Installation Identification Code   |
| Table VI-7:    | Correlation Identification Code  |
| Annex VII      |  |
| Annex VIII     |  |
| Table VIII-1:  | Message Sequence Diagram for Processes concerning an Account or Verified Emissions |
| Table VIII-2:  | Status Diagram for Processes concerning an Account or Verified Emissions           |
| Table VIII-3:  | Components and Functions for Processes concerning an Account or Verified Emissions |
| Table VIII-4:  | MgmtOfAccountWS Component  |
| Table VIII-5:  | MgmtOfAccountWS.CreateAccount() function   |
| Table VIII-6:  | MgmtOfAccountWS.UpdateAccount() function   |
| Table VIII-7:  | MgmtOfAccountWS.CloseAccount() function  |
| Table VIII-8:  | MgmtOfAccountWS.UpdateVerifiedEmissions() function                                 |
| Table VIII-9:  | MgmtOfAccountWS.ReceiveAccountOperationOutcome() function                          |
| Table VIII-10: | AccountManagement Component  |
| Table VIII-11: | ManagementOfAccount.ValidateAccountCreation() function                             |
| Table VIII-12: | ManagementOfAccount.CreateAccount() function                                       |
| Table VIII-13: | AccountManagement.ValidateAccountUpdate() function                                 |
| Table VIII-14: | ManagementOfAccount.UpdateAccount() function                                       |

**▼ B**

|                |  |
|----------------|--|
| Table VIII-15: | ManagementOfAccount.ValidateAccountClosure() function  |
| Table VIII-16: | ManagementOfAccount.CloseAccount()   |
| Table VIII-17: | ManagementOfAccount.ValidateVerifiedEmissionsUpdate()  |
| Table VIII-18: | ManagementOfAccount.UpdateVerifiedEmissions  |
| Table VIII-19: | Secondary Checks   |
| Annex IX       |  |
| Table IX-1:    | Tertiary Checks  |
| Annex X        |  |
| Table X-1:     | Secondary Checks   |
| Annex XI       |  |
| Annex XIa      |  |
| Table XIa-1:   | Components and Functions for Processes concerning automatic national allocation plan table changes             |
| Table XIa-2:   | NAPTableManagementWS Component   |
| Table XIa-3:   | NAPTableManagementWS.AddNEInstallationtoNAP() function   |
| Table XIa-4:   | NAPTableManagementWS.IncreaseAllocationtoNEInstallationinNAPIncreaseallocationtoNEInstallationinNAP() function |
| Table XIa-5:   | NAPTableManagementWS RemoveNAPallocationofclosingInstallation() function                                       |
| Table XIa-6:   | NAPTableManagementWS receiveNapManagementOutcome () function   |
| Table XIa-6a:  | NAPTableManagementWS IncreaseNAPallocationReserve () function  |
| Table XIa-6b:  | NAPTableManagementWS RemoveNAPallocationReserve () function  |
| Table XIa-7:   | Processes concerning NAP Table changes   |
| Annex XII      |  |
| Table XII-1:   | Community Independent Transaction Log Response Codes   |
| Annex XIII     |  |
| Annex XIV      |  |
| Annex XV       |  |
| Annex XVI      |  |



THE COMMISSION OF THE EUROPEAN COMMUNITIES,

Having regard to the Treaty establishing the European Community,

Having regard to Directive 2003/87/EC of the European Parliament and of the Council of 13 October 2003 establishing a scheme for greenhouse gas emission allowance trading within the Community and amending Council Directive 96/61/EC <sup>(1)</sup>, and in particular Article 19(3) thereof,

Having regard to Decision 280/2004/EC of the European Parliament and of the Council of 11 February 2004 concerning a mechanism for monitoring Community greenhouse gas emissions and for implementing the Kyoto Protocol <sup>(2)</sup>, and in particular the first subparagraph, second sentence, Article 6(1) thereof,

Whereas:

- (1) An integrated Community system of registries, consisting of the registries of the Community and its Member States established pursuant to Article 6 of Decision No 280/2004/EC that incorporate the registries established pursuant to Article 19 of Directive 2003/87/EC and the Community independent transaction log established pursuant to Article 20 of that Directive, is necessary to ensure that the issue, transfer and cancellation of allowances does not involve irregularities and that transactions are compatible with the obligations resulting from the United Nations Framework Convention on Climate Change (UNFCCC) and the Kyoto Protocol.
- (2) In accordance with Directive 2003/4/EC of 28 January 2003 on public access to environmental information <sup>(3)</sup> and Decision 19/CP.7 of the Conference of the Parties to the UNFCCC, specific reports should be made public on a regular basis to ensure that the public has access to information held within the integrated system of registries, subject to certain confidentiality requirements.
- (3) Community legislation concerning the protection of individuals with regard to the processing of personal data and on the free movement of such data, in particular Directive 95/46/EC on the protection of individuals with regard to the processing of personal data and on the free movement of such data <sup>(4)</sup>, Directive 2002/58/EC concerning the processing of personal data and the protection of privacy in the electronic communications sector <sup>(5)</sup> and Regulation (EC) No 45/2001 on the protection of individuals with regard to the processing of personal data by the Community institutions and bodies and on the free movement of such data <sup>(6)</sup>, should be respected where these are applicable to information held and processed pursuant to this Regulation.
- (4) Each registry should contain one Party holding account, one retirement account, and the cancellation and replacement accounts required pursuant to Decision 19/CP.7 of the Conference of the Parties to the UNFCCC for each commitment period, and each registry established pursuant to Article 19 of Directive 2003/87/EC should contain holding accounts required to implement the requirements of that Directive for operators and for other persons. Each such account should be created in accordance with standardised procedures to ensure the integrity

<sup>(1)</sup> OJ L 275, 25.10.2003, p. 32.

<sup>(2)</sup> OJ L 49, 19.2.2004, p. 1.

<sup>(3)</sup> OJ L 41, 14.2.2003, p. 26.

<sup>(4)</sup> OJ L 281, 23.11.1995, p. 31.

<sup>(5)</sup> OJ L 201, 31.7.2002, p. 37.

<sup>(6)</sup> OJ L 8, 12.1.2001, p. 1.

**▼B**

of the registries system and public access to information held in this system.

- (5) Article 6 of Decision No 280/2004/EC requires the Community and its Member States to apply the functional and technical specifications for data exchange standards for registry systems under the Kyoto Protocol, elaborated pursuant to Decision 24/CP.8 of the Conference of the Parties to the UNFCCC, for the establishment and operation of registries and the Community independent transaction log. The application and elaboration of these specifications in relation to the integrated Community registries system allows the incorporation of the registries established pursuant to Article 19 of Directive 2003/87/EC into the registries established pursuant to Article 6 of Decision No 280/2004/EC.
- (6) The Community independent transaction log will perform automated checks on all processes in the Community registries system concerning allowances, verified emissions, accounts and Kyoto units, and the UNFCCC independent transaction log will perform automated checks on processes concerning Kyoto units to ensure that there are no irregularities. Processes that fail these checks will be terminated to ensure that transactions in the Community registries system comply with the requirements of Directive 2003/87/EC and the requirements elaborated pursuant to the UNFCCC and the Kyoto Protocol.
- (7) All transactions in the Community registries system should be executed in accordance with standardised procedures and, where necessary, on a harmonised timetable, in order to ensure compliance with the requirements of Directive 2003/87/EC and with the requirements elaborated pursuant to the UNFCCC and the Kyoto Protocol, and to protect the integrity of that system.
- (8) Minimum security standards and harmonised requirements on authentication and access rights should be applied to protect the security of information held in the integrated Community registries system.
- (9) The Central Administrator and each registry administrator should ensure that interruptions to the operation of the integrated Community registries system are kept to a minimum by taking all reasonable steps to ensure the availability of the registries and the Community independent transaction log and by providing for robust systems and procedures for the safeguarding of all information.
- (10) Records concerning all processes, operators and persons in the Community registries system should be stored in accordance with the data logging standards set out in the functional and technical specifications for data exchange standards for registry systems under the Kyoto Protocol elaborated pursuant to Decision 24/CP.8 of the Conference of the Parties to the UNFCCC.
- (11) A transparent system of fees and a prohibition to charge account holders for specific transactions in the Community registries system will help ensure the integrity of that system.
- (12) The measures provided for in this Regulation are in accordance with the opinion of the Committee referred to in Article 23(1) of Directive 2003/87/EC and Article 9(2) of Decision No 280/2004/EC.

**▼B**

HAS ADOPTED THIS REGULATION:

## CHAPTER I

## SUBJECT MATTER AND DEFINITIONS

*Article 1***Subject matter**

This Regulation lays down general provisions, functional and technical specifications and operational and maintenance requirements concerning the standardised and secured registries system consisting of registries, in the form of standardised electronic databases containing common data elements, and the Community independent transaction log. It also provides for an efficient communication system between the Community independent transaction log and the UNFCCC independent transaction log.

*Article 2***Definitions**

For the purposes of this Regulation, the definitions laid down in Article 3 of Directive 2003/87/EC shall apply. The following definitions shall also apply:

- (a) ‘2005-2007 period’ means the period from 1 January 2005 to 31 December 2007 as referred to in Article 11(1) of Directive 2003/87/EC;
- (b) ‘2008-2012 period and subsequent five-year periods’ means the period from 1 January 2008 to 31 December 2012 plus consecutive five-year periods as referred to in Article 11(2) of Directive 2003/87/EC;
- (c) ‘account holder’ means a person who holds an account in the registries system;
- (d) ‘assigned amount’ means the amount of greenhouse gas emissions in tonnes of carbon dioxide equivalent calculated in accordance with the emission levels determined pursuant to Article 7 of Decision No 280/2004/EC;

**▼M1**

- (e) ‘assigned amount unit’ (AAU) means a unit issued pursuant to Article 7(3) of Decision No 280/2004/EC or by a Party to the Kyoto Protocol;

**▼B**

- (f) ‘authorised representative’ means a natural person authorised to represent the Central Administrator, a registry administrator, an account holder or a verifier pursuant to Article 23;
- (g) ‘CDM registry’ means the clean development mechanism registry established, operated and maintained by the executive board of the clean development mechanism pursuant to Article 12 of the Kyoto Protocol and the decisions adopted pursuant to the UNFCCC or the Kyoto Protocol;
- (h) ‘Central Administrator’ means the person designated by the Commission pursuant to Article 20 of Directive 2003/87/EC to operate and maintain the Community independent transaction log;
- (i) ‘Community independent transaction log’ means the independent transaction log provided for in Article 20(1) of Directive 2003/87/EC for the purpose of recording the issue, transfer and cancellation of allowances, and established, operated and maintained in accordance with Article 5;

**▼B**

- (j) ‘competent authority’ means the authority or authorities designated by a Member State pursuant to Article 18 of Directive 2003/87/EC;
- (k) ‘discrepancy’ means an irregularity detected by the Community independent transaction log or UNFCCC independent transaction log whereby the proposed process does not conform to the requirements specified under Directive 2003/87/EC as elaborated in this Regulation and the requirements elaborated pursuant to the UNFCCC or the Kyoto Protocol;
- (l) ‘force majeure allowance’ means a force majeure allowance issued pursuant to Article 29 of Directive 2003/87/EC;
- (m) ‘inconsistency’ means an irregularity detected by the Community independent transaction log or UNFCCC independent transaction log whereby the information regarding allowances, accounts or Kyoto units provided by a registry as part of the periodic reconciliation process differs from the information contained in either independent transaction log;
- (n) ‘Kyoto unit’ means an AAU, RMU, ERU or CER;
- (o) ‘process’ means any one of the processes referred to in Article 32;
- (p) ‘registry’ means a registry established, operated and maintained pursuant to Article 6 of Decision No 280/2004/EC, incorporating a registry established pursuant to Article 19 of Directive 2003/87/EC. ► **M1** Special provisions are applicable to registries referred to in Article 63a; ◀
- (q) ‘registry administrator’ means the competent authority, persons or person, designated by the Member State or the Commission, that operates and maintains a registry in accordance with the requirements of Directive 2003/87/EC, Decision No 280/2004/EC and this Regulation;
- (r) ‘removal unit’ (RMU) means a unit issued pursuant to Article 3 of the Kyoto Protocol;
- (s) ‘temporary CER’ (tCER) is a CER issued for an afforestation or reforestation project activity under the CDM which, subject to the decisions adopted pursuant to the UNFCCC or the Kyoto Protocol, expires at the end of the commitment period following the one during which it was issued;
- (t) ‘long-term CER’ (lCER) is a CER issued for an afforestation or reforestation project activity under the CDM which, subject to the decisions adopted pursuant to the UNFCCC or the Kyoto Protocol, expires at the end of the crediting period of the afforestation or reforestation project activity under the CDM for which it was issued;
- (u) ‘third country registry’ means a registry established, operated and maintained by a country listed in Annex B to the Kyoto Protocol which has ratified the Kyoto Protocol and is not a Member State;
- (v) ‘transaction’ means the issue, transfer, acquisition, surrender, cancellation and replacement of allowances and the issue, transfer, acquisition, cancellation and retirement of ERUs, CERs, AAUs and RMUs and carry-over of ERUs, CERs and AAUs;
- (w) ‘UNFCCC independent transaction log’ means the independent transaction log established, operated and maintained by the Secretariat of the United Nations Framework Convention on Climate Change;
- (x) ‘verifier’ means a competent, independent, accredited verification body with responsibility for performing and reporting on the verification process, in accordance with the detailed requirements established by the Member State pursuant to Annex V of Directive 2003/87/EC;



**▼B**

- (y) 'year' means a calendar year, defined according to Greenwich Mean Time.

## CHAPTER II

**REGISTRIES AND TRANSACTION LOGS***Article 3***Registries**

1. A registry in the form of a standardised electronic database shall be established by each Member State and the Commission by the day after the entry into force of this Regulation.
2. Each registry shall incorporate the hardware and software set out in Annex I, be accessible via the Internet, and conform to the functional and technical specifications required by this Regulation.
3. Each registry shall be capable of executing correctly all the processes concerning verified emissions and accounts set out in Annex VIII, the reconciliation process set out in Annex X and all the administrative processes set out in Annex XI by the day after the entry into force of this Regulation.

Each registry shall be capable of executing correctly all the processes concerning allowances and Kyoto units set out in Annex IX by the day after the entry into force of this Regulation, with the exception of the processes with process types 04-00, 06-00, 07-00 and 08-00.

Each registry shall be capable of executing correctly the processes concerning allowances and Kyoto units with process types 04-00, 06-00, 07-00 and 08-00 set out in Annex IX by 31 March 2005.

**▼M1**

Each registry shall be capable of executing correctly all the processes concerning automatic national allocation plan table changes set out in Annex XIa from 1 February 2008.

**▼B***Article 4***Consolidated registries**

A Member State or the Commission may establish, operate and maintain their registry in a consolidated manner together with one or more other Member States or the Community, provided that its registry remains distinct.

*Article 5***The Community independent transaction log**

1. The Community independent transaction log shall be established by the Commission in the form of a standardised electronic database by the day after the entry into force of this Regulation.
2. The Community independent transaction log shall incorporate the hardware and software set out in Annex I, be accessible via the Internet, and conform to the functional and technical specifications required by this Regulation.
3. The Central Administrator designated pursuant to Article 20 of Directive 2003/87/EC shall operate and maintain the Community independent transaction log in accordance with the provisions of this Regulation.

**▼ M1**

4. The Central Administrator shall provide the administrative processes referred to in Annex XI in order to facilitate the integrity of the data within the registries system and shall provide the processes related to automatic national allocation plan table changes referred to in Annex XIa to ensure that national allocation plan tables reflect the number of allowances issued and allocated to installations.

5. The Central Administrator shall only perform processes concerning allowances, verified emissions, automatic national allocation plan table changes, accounts or Kyoto units where necessary to carry out its functions as Central Administrator.

**▼ B**

6. The Community independent transaction log shall be capable of executing correctly all the processes concerning allowances, verified emissions, accounts or Kyoto units set out in Annex VIII and Annex IX by the day after the entry into force of this Regulation.

The Community independent transaction log shall be capable of executing correctly the reconciliation process set out in Annex X and the administrative processes set out in Annex XI by the day after the entry into force of this Regulation.

**▼ M1**

The Community independent transaction log shall be capable of executing correctly all the processes concerning automatic national allocation plan table changes set out in Annex XIa from 1 February 2008.

**▼ B***Article 6***Communication link between registries and the Community independent transaction log**

1. A communication link between each registry and the Community independent transaction log shall be established by 31 December 2004.

The Central Administrator shall activate the communication link after the testing procedures set out in Annex XIII and the initialisation procedures set out in Annex XIV have been completed successfully and notify the relevant registry administrator thereof.

**▼ M1**

2. From 1 February 2008 until the communication link referred to in Article 7 has been established, all processes concerning allowances, verified emissions, automatic national allocation plan table changes, and accounts shall be completed through the exchange of data via the Community independent transaction log.

**▼ B**

3. The Commission may instruct the Central Administrator to temporarily suspend a process referred to in Annexes VIII and IX initiated by a registry if that process is not being executed in accordance with Articles 32 to 37.

The Commission may instruct the Central Administrator to temporarily suspend the communication link between a registry and the Community independent transaction log or to suspend all or some of the processes referred to in Annexes VIII and IX, if that registry is not operated and maintained in accordance with the provisions of this Regulation.

**▼ M1***Article 7***Communication link between the independent transaction logs**

1. A communication link between the Community independent transaction log and the UNFCCC independent transaction log shall be considered as established when these systems are linked on the basis

**▼ M1**

of a decision taken by the Central Administrator after consulting the Climate Change Committee. The Central Administrator shall establish and maintain such a link when

- (a) all registries have successfully completed the UNFCCC initialisation procedure; and
- (b) the Community independent transaction log and the UNFCCC independent transaction log are able to provide the necessary functionality and to link to each other.

2. If the conditions provided for in paragraph 1 are not met, the Commission may, subject to the majority support of the Climate Change Committee, instruct the Central Administrator to establish and maintain such a link.

3. After having established the link described in 1., all processes concerning allowances, verified emissions, accounts, automatic national allocation plan table changes and Kyoto units shall be completed through the exchange of data via the UNFCCC independent transaction log and thereon to the Community independent transaction log.

4. The Commission shall evaluate and report to the Climate Change Committee on options for connecting registries, the UNFCCC independent transaction log and the Community independent transaction log different from the one described in 3. In particular it shall be considered whether all processes concerning allowances and Kyoto units shall be completed through the exchange of data via the Community independent transaction log and thereon to the UNFCCC independent transaction log and all processes concerning verified emissions, accounts and automatic national allocation plan table changes shall be completed through the exchange of data via the Community independent transaction log.

**▼ M2**

5. Six months after the establishment of the first communication link referred to in paragraph 4, the Commission shall review the functional and technical specifications for data exchange standards for registry systems under the Kyoto Protocol elaborated pursuant to Decision 24/CP.8 of the Conference of the Parties to the UNFCCC, and if it finds that they provide for the possibility of the establishment of a communication link between registries and the UNFCCC international transaction log to be established via the Community independent transaction log, thereby allowing a simplification of the architecture of the registries system, it shall promptly propose an amendment to this Regulation with the purpose of simplifying the architecture of the registries system.

**▼ M1**

6. The decisions referred to in paragraphs 1 and 2 shall, where possible be adopted at least three months prior to their implementation.

**▼ M2***Article 7a*

Should the communication link between the transaction logs referred to in Article 7 be established after allowances for the 2008-12 period have been issued in accordance with Article 11 of Directive 2003/87/EC, registry administrators shall, upon completion of the connection, replace any allowances in their registry with an equal amount of allowances recognised as assigned amount units by the UNFCCC international transaction log.

*Article 8***Registry administrators**

1. Each Member State and the Commission shall designate a registry administrator to operate and maintain its registry in accordance with the provisions of this Regulation.

Member States and the Commission shall ensure that there is no conflict of interest between the registry administrator and its account holders or between the registry administrator and the Central Administrator.

2. Each Member State shall notify the Commission of the identity and contact details of the registry administrator for its registry by 1 September 2004 in accordance with the initialisation procedures set out in Annex XIV.

3. The Member States and the Commission shall retain ultimate responsibility and authority for the operation and maintenance of their registries.

4. The Commission shall coordinate the implementation of the requirements of this Regulation with the registry administrators of each Member State and the Central Administrator.

## CHAPTER III

## CONTENTS OF THE REGISTRIES

*SECTION 1****Reporting and Confidentiality****Article 9***Reporting**

1. Each registry administrator shall make available the information listed in Annex XVI at the frequencies and to the recipients set out in Annex XVI in a transparent and organised manner via his registry web site. Registry administrators shall not release additional information held in the registry.

2. The Central Administrator shall make available the information listed in Annex XVI at the frequencies and to the recipients set out in Annex XVI in a transparent and organised manner via the Community independent transaction log web site. The Central Administrator shall not release additional information held in the Community independent transaction log.

3. Each web site shall allow the recipients of the reports listed in Annex XVI to query those reports using search facilities.

4. Each registry administrator is responsible for the accuracy of the information that originates from his registry and is made available via the Community independent transaction log website.

5. Neither the Community independent transaction log nor registries shall require account holders to submit price information concerning allowances or Kyoto units.

*Article 10***Confidentiality**

1. All information, including the holdings of all accounts and all transactions made, held in the registries and the Community inde-

**▼B**

pendent transaction log shall be considered confidential for any purpose other than the implementation of the requirements of this Regulation, Directive 2003/87/EC or national law.

2. Information held in the registries may not be used without the prior consent of the relevant account holder except to operate and maintain those registries in accordance with the provisions of this Regulation.

**▼M1**

3. Each competent authority and registry administrator shall only perform processes concerning allowances, verified emissions, automatic national allocation plan table changes, accounts or Kyoto units where necessary to carry out their functions as competent authority or registry administrator.

**▼B***SECTION 2**Accounts**Article 11***Accounts**

1. From 1 January 2005 onwards, each registry shall contain at least one Party holding account created in accordance with Article 12.

**▼M2**

2. From 1 January 2005 onwards each Member State registry shall contain one operator holding account for each installation created in accordance with Article 15 and at least one personal holding account for each person created in accordance with Article 19.

**▼B**

3. From 1 January 2005 onwards, each registry shall contain one retirement account and one cancellation account for the 2005-2007 period and one cancellation account for the 2008-2012 period, created in accordance with Article 12.

4. From 1 January 2008 and from 1 January of the first year of each subsequent five-year period, each registry shall contain one retirement account and the cancellation and replacement accounts required by the relevant decisions adopted pursuant to the UNFCCC or the Kyoto Protocol for the 2008-2012 period and for each subsequent five-year period, created in accordance with Article 12.

5. Unless otherwise provided, all accounts shall be capable of holding allowances and Kyoto units.

*SECTION 3**Party accounts**Article 12***Creation of Party accounts**

1. The relevant body of the Member State and the Commission shall submit an application to their respective registry administrator for the creation in their registries of the accounts referred to in Article 11(1), (3) and (4).

The applicant shall provide the registry administrator with the information reasonably required by the registry administrator. That information shall include the information set out in Annex IV.

**▼B**

2. Within 10 days of the receipt of an application in accordance with paragraph 1 or the activation of the communication link between the registry and the Community independent transaction log, whichever is the later, the registry administrator shall create the account in the registry in accordance with the account creation process set out in Annex VIII.

3. The applicant referred to in paragraph 1 shall notify its registry administrator within 10 days of any changes in the information provided to its registry administrator pursuant to paragraph 1. Within 10 days of the receipt of such a notification the registry administrator shall update that information in accordance with the account update process set out in Annex VIII.

4. The registry administrator may require the applicants referred to in paragraph 1 to agree to comply with reasonable terms and conditions addressing the issues set out in Annex V.

*Article 13***Closure of Party accounts**

Within 10 days of the receipt of an application from the relevant body of a Member State or from the Commission to close a Party holding account, its registry administrator shall close the account in accordance with the account closure process set out in Annex VIII.

*Article 14***Notification**

The registry administrator shall immediately notify the account holder of the creation or update of his Party accounts and of the closure of his Party holding accounts.

*SECTION 4***Operator holding accounts***Article 15***Creation of operator holding accounts****▼M1**

1. Within 14 days of the entry into force of each greenhouse gas emissions permit issued to the operator of an installation where the installation has not previously been covered by such a permit or the activation of the communication link between the registry and the Community independent transaction log, whichever is the later, the competent authority, or the operator where the competent authority so requires, shall provide the registry administrator of the Member State registry with the information set out in Annex III.

**▼B**

2. Within 10 days of the receipt of the information in paragraph 1 or the activation of the communication link between the registry and the Community independent transaction log, whichever is the later, the registry administrator shall create an operator holding account referred to in Article 11(2) for each installation in its registry in accordance with the account creation process set out in Annex VIII.

3. The competent authority, or the operator where the competent authority so requires, shall notify the registry administrator within 10 days of any changes in the information provided to the registry administrator pursuant to paragraph 1. Within 10 days of the receipt of such a

**▼B**

notification the registry administrator shall update the operator's details in accordance with the account update process set out in Annex VIII.

4. The registry administrator may require operators to agree to comply with reasonable terms and conditions addressing the issues set out in Annex V.

*Article 16***Holding of Kyoto units in operator holding accounts**

An operator holding account shall be capable of holding Kyoto units where authorised by Member State or Community legislation.

*Article 17***Closure of operator holding accounts**

1. The competent authority shall notify the registry administrator within 10 days of a greenhouse gas emissions permit being revoked or surrendered for an installation that is, as a result, not covered by any such permit. Without prejudice to paragraph 2, the registry administrator shall close all operator holding accounts relating to that revocation or surrender in accordance with the account closure process set out in Annex VIII on 30 June the year after the revocation or surrender took place if the relevant installation's entry in the latest year of the compliance status table is greater than or equal to zero. If the relevant installation's entry in the latest year of the compliance status table is less than zero, the registry administrator shall close its account the day after the entry is greater than or equal to zero or the day after the competent authority has instructed the registry administrator to close the account because there is no reasonable prospect of further allowances being surrendered by the installation's operator.

2. If there is a positive balance of allowances or Kyoto units in an operator holding account which the registry administrator is to close in accordance with paragraph 1, the registry administrator shall first request the operator to specify another account within the registry system to which such allowances or Kyoto units shall then be transferred. If the operator has not responded to the registry administrator's request within 60 days, the registry administrator shall transfer the balance to the Party holding account.

**▼M1**

3. Where the competent authority has notified the registry administrator of the revocation or surrender of a greenhouse gas emissions permit belonging to an installation related to an account which has an entry in the relevant national allocation plan table submitted in accordance with Article 44, the registry administrator shall, prior to closing the account, propose to the Central Administrator the following changes to the national allocation plan table:

- (a) deleting from the national allocation plan table and replacing with a null any allowances in the national allocation plan table that were not yet allocated to the installation until the proposed national allocation plan table change;
- (b) adding an equivalent number of allowances to the part of the national allocation plan table representing the quantity of allowances not allocated to existing installations.

The proposal shall be submitted to, and checked and implemented automatically by the Community independent transaction log in accordance with the processes set out in Annex XIa.

**▼B***Article 18***Notification**

The registry administrator shall immediately notify the account holder of the creation, update or closure of his operator holding account.

*SECTION 5****Person holding accounts****Article 19***Creation of person holding accounts**

1. An application for the creation of a person holding account shall be submitted to the registry administrator of the registry concerned.

The applicant shall provide the registry administrator with the information reasonably required by the registry administrator. That information shall include the information set out in Annex IV.

2. Within 10 days of the receipt of an application in accordance with paragraph 1 or the activation of the communication link between the registry and the Community independent transaction log, whichever is the later, the registry administrator shall create a person holding account in its registry in accordance with the account creation process set out in Annex VIII.

The registry administrator shall not establish more than 99 person holding accounts in any one person's name in its registry.

3. The applicant shall notify the registry administrator within 10 days of any changes in the information provided to the registry administrator pursuant to paragraph 1. Within 10 days of the receipt of such a notification the registry administrator shall update the person's details in accordance with the account update process set out in Annex VIII.

4. The registry administrator may require the applicants referred to in paragraph 1 to agree to comply with reasonable terms and conditions addressing the issues set out in Annex V.

*Article 20***Holding of Kyoto units in person holding accounts**

A person holding account shall be capable of holding Kyoto units where authorised by Member State or Community legislation.

*Article 21***Closure of person holding accounts**

1. Within 10 days of the receipt of an application from a person to close a person holding account, the registry administrator shall close the account in accordance with the account closure process set out in Annex VIII.

2. If a person holding account has a zero balance and no transactions have been recorded during a period of 12 months, the registry administrator shall notify the account holder that the person holding account shall be closed within 60 days unless the registry administrator receives within that period a request from the account holder that the person holding account be maintained. If the registry administrator does not receive any such request from the account holder, it shall close the



**▼B**

account in accordance with the account closure process set out in Annex VIII.

*Article 22***Notification**

The registry administrator shall immediately notify each account holder of the creation, update or closure of his person holding account.

*Article 23***Authorised representatives**

1. Each account holder shall appoint a primary and a secondary authorised representative for each account created in accordance with Articles 12, 15 and 19. Requests to the registry administrator to carry out processes shall be submitted by an authorised representative on behalf of the account holder.

2. Each Member State and the Commission may allow account holders in its registry to nominate an additional authorised representative whose agreement is required in addition to the agreement of the primary or secondary authorised representative to submit a request to their registry administrator to carry out one or more of the processes pursuant to Articles 49(1), 52, 53 and 62.

3. Each verifier shall appoint at least one authorised representative to enter or approve the entry of the annual verified emissions for an installation into the verified emissions table in accordance with Article 51(1).

4. Each registry administrator and the Central Administrator shall appoint at least one authorised representative to operate and maintain their registry and the Community independent transaction log on behalf of that administrator.

*SECTION 6***Tables***Article 24***Tables**

1. From 1 January 2005 onwards, each Member State registry shall contain one verified emissions table, one surrendered allowances table, and one compliance status table.

Each registry may contain additional tables for other purposes.

2. The Community independent transaction log shall contain one national allocation plan table for each Member State for the 2005-2007 period, the 2008-2012 period and for each subsequent five-year period.

The Community independent transaction log may contain additional tables for other purposes.

3. The tables in each Member State registry shall contain the information set out in Annex II. The operator holding accounts and person holding accounts shall contain the information set out in Annex XVI.

The national allocation plan table in the Community independent transaction log shall contain the information set out in Annex XIV.

**▼B***SECTION 7**Codes and identifiers**Article 25***Codes**

Each registry shall contain the input codes set out in Annex VII and the response codes set out in Annex XII in order to ensure the correct interpretation of information exchanged during each process.

*Article 26***Account identification codes and alphanumeric identifiers**

Before creating an account the registry administrator shall assign to each account a unique account identification code and the alphanumeric identifier specified by the account holder as part of the information given under Annexes III and IV respectively. Before creating an account, the registry administrator shall also assign to the account holder a unique account holder identification code comprising the elements set out in Annex VI.

## CHAPTER IV

**CHECKS AND PROCESSES***SECTION 1**Blocking of accounts**Article 27***Blocking of operator holding accounts**

1. If, on 1 April of each year starting in 2006, an installation's annual verified emissions for the preceding year have not been entered into the verified emissions table in accordance with the verified emissions entry process set out in Annex VIII, the registry administrator shall block the transfer of any allowances out of the operator holding account for that installation.
2. When the installation's annual verified emissions for the year referred to in paragraph 1 have been entered into the verified emissions table, the registry administrator shall unblock the account.
3. The registry administrator shall immediately notify the relevant account holder and the competent authority of the blocking and unblocking of each operator holding account.
4. Paragraph 1 shall not apply to the surrender of allowances pursuant to Article 52 or the cancellation and replacement of allowances pursuant to Articles 60 and 61.

**▼B***SECTION 2**Automated checks and the data reconciliation process***▼M1***Article 28***Detection of discrepancies by the Community independent transaction log**

1. The Central Administrator shall ensure that the Community independent transaction log conducts the automated checks set out in Annexes VIII, IX, XI and XIa for all processes concerning allowances, verified emissions, accounts, automatic national allocation plan table changes and Kyoto units to ensure that there are no discrepancies.

2. If the automated checks referred to in paragraph 1 identify a discrepancy in a process under Annexes VIII, IX, XI and XIa, the Central Administrator shall immediately inform the registry administrator or administrators concerned by returning an automated response detailing the exact nature of the discrepancy using the response codes set out in Annexes VIII, IX, XI and XIa.

Upon receiving such a response code for a process under Annex VIII, Annex IX or Annex XIa, the registry administrator of the initiating registry shall terminate that process and inform the Community independent transaction log.

The Central Administrator shall not update the information contained in the Community independent transaction log.

The registry administrator or administrators concerned shall immediately inform the relevant account holders that the process has been terminated.

**▼B***Article 29***Detection of inconsistencies by the Community independent transaction log**

1. ►**M1** The Central Administrator shall ensure that the Community independent transaction log periodically initiates the data reconciliation process set out in Annex X. For that purpose the Community independent transaction log shall record all processes concerning allowances, accounts, automatic national allocation plan table changes and Kyoto units. ◀

Through that process, the Community independent transaction log shall check that the holdings of Kyoto units and allowances in each account in a registry are identical to the records held in the Community independent transaction log.

2. If an inconsistency is detected during the data reconciliation process, the Central Administrator shall immediately inform the registry administrator or administrators concerned. If the inconsistency is not resolved, the Central Administrator shall ensure that the Community independent transaction log does not allow any further process under Annex VIII and Annex IX concerning any of the allowances, accounts or Kyoto units which are the subject of the earlier inconsistency to proceed.

**▼M1**

3. Upon the request of the Central Administrator, the registry administrator shall provide a copy of the verified emissions table in its registry to the Central Administrator. The Central Administrator shall check that the verified emissions table of the registry is identical to the records held in the Community independent transaction log. If a difference is detected the Central Administrator shall immediately inform the registry

**▼ M1**

administrator, and request it to eliminate the difference through the verified emissions update process set out in Annex VIII.

The Community independent transaction log shall record all changes to the verified emissions table.

**▼ B***Article 30***Detection of discrepancies and inconsistencies by the UNFCCC independent transaction log**

1. If the UNFCCC independent transaction log, following an automated check, informs the registry administrator or administrators concerned of a discrepancy in a process, the registry administrator of the initiating registry shall terminate the process and inform the UNFCCC independent transaction log thereof. The registry administrator or administrators concerned shall immediately inform the relevant account holders that the process has been terminated.

2. If the UNFCCC independent transaction log has detected an inconsistency, the Central Administrator shall ensure that the Community independent transaction log does not allow any further process under Annex VIII and Annex IX concerning any of the Kyoto units which are the subject of the earlier inconsistency, and which is not subject to the UNFCCC independent transaction log's automated checks, to proceed.

*Article 31***Registry automated checks**

Prior to and during the execution of all processes the registry administrator shall ensure that appropriate automated checks are conducted within the registry, in order to detect discrepancies and thereby terminate processes in advance of automated checks being conducted by the Community independent transaction log or UNFCCC independent transaction log.

*SECTION 3**Execution and finalisation of processes***▼ M1***Article 32***Processes**

Each process shall follow the complete sequence for message exchanges for that type of process as set out in Annexes VIII, IX, X, XI, and Annex XIa. Each message shall conform to the format and informational requirements described using web services description language as elaborated pursuant to the UNFCCC or the Kyoto Protocol.

*Article 33***Identification codes**

The registry administrator shall assign to each process referred to in Annexes VIII and XIa a unique correlation identification code and to each process referred to in Annex IX a unique transaction identification code.

Each such identification code shall comprise the elements set out in Annex VI.

▼ **M1***Article 34***Finalisation of processes concerning accounts, automatic national allocation plan table changes and verified emissions**

When there is a communication link established between the two independent transaction logs and if all processes concerning accounts, automatic national allocation plan table changes and verified emissions are completed through the exchange of data via the UNFCCC independent transaction log, these shall be final when both independent transaction logs successfully inform the initiating registry that they have not detected any discrepancies in the proposal sent by the initiating registry.

In all other cases than those referred to in the first paragraph, all processes concerning accounts, automatic national allocation plan table changes and verified emissions shall be final when the Community independent transaction log successfully informs the initiating registry that it has not detected any discrepancies in the proposal sent by the initiating registry.

*Article 34a***Manual reversal of finalised transactions initiated in error**

1. If an account holder or a registry administrator acting on behalf of the account holder unintentionally or erroneously initiated a transaction under Articles 52, 53, 58 or 62(2), it may propose to its registry administrator to carry out a manual reversal of the transaction in a written request duly signed by the authorised representative or representatives of the account holder that are able to initiate a transaction and posted within five working days of the finalisation of the transaction or the entry into force of this Regulation whichever is the later. The request shall contain a statement indicating that the transaction was initiated erroneously or unintentionally.

2. The registry administrator may notify the Central Administrator of the request and its intention to carry out a specific manual intervention in its database in order to reverse the transaction, within 30 calendar days of its decision on reversing the transaction, but not later than 60 calendar days of the finalisation of the transaction or the entry into force of this Regulation, whichever is the later.

The Central Administrator shall, within 30 calendar days of its receipt of the registry administrator's notification under the first subparagraph of paragraph 2 carry out a manual intervention in the Community independent transaction log database that is corresponding to the one specified in the notification of the registry administrator if:

- (a) the notification was posted within the deadline indicated in the first subparagraph of paragraph 2;
- (b) the proposed manual intervention only reverses the effects of the transaction considered to have been initiated unintentionally or erroneously and does not involve reversing the effects of later transactions involving the same allowances or Kyoto units.

3. The registry administrator may not reverse transactions pursuant to Article 52 and 53 if as a result, an operator would become non-compliant for a previous year.

▼ **B***Article 35***Finalisation of processes concerning transactions within registries**

All processes referred to in Annex IX, except the external transfer process, shall be final when both independent transaction logs inform

**▼B**

the initiating registry that they have not detected any discrepancies in the proposal sent by the initiating registry and the initiating registry has successfully sent confirmation to both independent transaction logs that it has updated its records in accordance with its proposal.

However, prior to the communication link between the Community independent transaction log and the UNFCCC independent transaction log being established, all processes referred to in Annex IX, except the external transfer process, shall be final when the Community independent transaction log informs the initiating registry that it has not detected any discrepancies in the proposal sent by the initiating registry and the initiating registry has successfully sent confirmation to the Community independent transaction log that it has updated its records in accordance with its proposal.

*Article 36***Finalisation of the external transfer process**

The external transfer process shall be final when both independent transaction logs inform the acquiring registry that they have not detected any discrepancies in the proposal sent by the initiating registry and the acquiring registry has successfully sent confirmation to both independent transaction logs that it has updated its records in accordance with the initiating registry's proposal.

However, prior to the communication link between the Community independent transaction log and the UNFCCC independent transaction log being established, the external transfer process shall be final when the Community independent transaction log informs the acquiring registry that it has not detected any discrepancies in the proposal sent by the initiating registry and the acquiring registry has successfully sent confirmation to the Community independent transaction log that it has updated its records in accordance with the initiating registry's proposal.

*Article 37***Finalisation of the reconciliation process**

The reconciliation process referred to in Annex X shall be final when all inconsistencies between the information contained in a registry and the information contained in the Community independent transaction log for a specific time and date have been resolved, and the reconciliation process has been successfully re-initiated and completed for that registry.

CHAPTER V  
TRANSACTIONS

*SECTION 1**Allocation and issue of allowances for the 2005-2007 period**Article 38***National allocation plan table for the 2005-2007 period**

1. By 1 October 2004, each Member State shall notify to the Commission its national allocation plan table, corresponding to the decision taken under Article 11 of Directive 2003/87/EC. If the national allocation plan table is based upon the national allocation plan notified to the Commission which was not rejected under Article 9(3) of Directive 2003/87/EC or on which the Commission

**▼B**

has accepted proposed amendments, the Commission shall instruct the Central Administrator to enter the national allocation plan table into the Community independent transaction log in accordance with the initialisation procedures set out in Annex XIV.

2. A Member State shall notify each correction to its national allocation plan together with each corresponding correction in its national allocation plan table to the Commission. If the correction to the national allocation plan table is based upon the national allocation plan notified to the Commission which was not rejected under Article 9(3) of Directive 2003/87/EC or on which the Commission has accepted amendments and that correction is in accordance with methodologies set out in that national allocation plan or results from improvements in data, the Commission shall instruct the Central Administrator to enter the corresponding correction into the national allocation plan table held in the Community independent transaction log in accordance with the initialisation procedures set out in Annex XIV. In all other cases, the Member State shall notify the correction to its national allocation plan to the Commission and if the Commission does not reject this correction in accordance with the procedure in Article 9(3) of Directive 2003/87/EC, the Commission shall instruct the Central Administrator to enter the corresponding correction into the national allocation plan table held in the Community independent transaction log in accordance with the initialisation procedures set out in Annex XIV.

3. The registry administrator shall, subsequent to any correction made pursuant to paragraph 2 which occurs after allowances have been issued under Article 39 and which reduces the total quantity of allowances issued under Article 39 for the 2005-2007 period, transfer the number of allowances specified by the competent authority from the holding accounts referred to in Article 11(1) and (2) in which the allowances are held to the cancellation account for the 2005-2007 period.

The correction shall take place in accordance with the correction to allowances process set out in Annex IX.

*Article 39***Issue of allowances**

After the national allocation plan table has been entered into the Community independent transaction log and, subject to Article 38(2), by 28 February 2005, the registry administrator shall issue the total quantity of allowances set out in the national allocation plan table into the Party holding account.

When issuing such allowances the registry administrator shall assign a unique unit identification code to each allowance comprising the elements set out in Annex VI.

Allowances shall be issued in accordance with the allowance issue (2005-2007) process set out in Annex IX.

*Article 40***Allocation of allowances to operators**

Without prejudice to Articles 38(2) and 41, by 28 February 2005 and by 28 February of each year thereafter for the 2005-2007 period, the registry administrator shall transfer from the Party holding account to the relevant operator holding account the proportion of the total quantity of allowances issued under Article 39 which has been allocated to the corresponding installation for that year in accordance with the relevant section of the national allocation plan table.

**▼B**

Where foreseen for an installation in the national allocation plan of the Member State, the registry administrator may transfer that proportion at a later date of each year.

Allowances shall be allocated in accordance with the allowance allocation process set out in Annex IX.

*Article 41***Surrender of allowances on instruction of the competent authority**

If instructed to do so by the competent authority pursuant to Article 16(1) of Directive 2003/87/EC, the registry administrator shall surrender part or all of the proportion of the total quantity of allowances issued under Article 39 which has been allocated to an installation for a specific year, by entering the number of surrendered allowances into the section of the surrendered allowance table designated for that installation for that year. These surrendered allowances shall remain in the Party holding account.

Allowances surrendered on instruction of the competent authority shall be surrendered in accordance with the allowance allocation process set out in Annex IX.

*Article 42***Allocation of allowances to new entrants**

If instructed to do so by the competent authority, the registry administrator shall transfer a proportion of the total quantity of allowances issued under Article 39 that are remaining in the Party holding account to the operator holding account of a new entrant.

Allowances shall be transferred in accordance with the internal transfer process set out in Annex IX.

*Article 43***Issue of force majeure allowances**

1. If instructed to do so by the competent authority, the registry administrator shall issue into the Party holding account the number of force majeure allowances authorised by the Commission for the 2005-2007 period pursuant to Article 29 of Directive 2003/87/EC.

Force majeure allowances shall be issued in accordance with the force majeure allowance issue process set out in Annex IX.

2. The registry administrator shall enter the number of issued force majeure allowances into the sections of the surrendered allowance table designated for those installations and years for which authorisation was given.

3. When issuing force majeure allowances the registry administrator shall assign a unique unit identification code to each such force majeure allowance comprising the elements set out in Annex VI.



**▼B***SECTION 2**Allocation and issue of allowances for the 2008-2012 period and each subsequent five year period**Article 44***National allocation plan table for the 2008-2012 period and each subsequent five year period**

1. By 1 January 2007 and by 1 January 12 months before the start of each subsequent five year period, each Member State shall notify to the Commission its national allocation plan table, corresponding to the decision taken under Article 11 of Directive 2003/87/EC. If the national allocation plan table is based upon the national allocation plan notified to the Commission which was not rejected under Article 9(3) of Directive 2003/87/EC or on which the Commission has accepted proposed amendments, the Commission shall instruct the Central Administrator to enter the national allocation plan table into the Community independent transaction log in accordance with the initialisation procedures set out in Annex XIV.

**▼M1**

2. A Member State shall notify each correction to its national allocation plan together with each corresponding correction in its national allocation plan table to the Commission. If the correction to the national allocation plan table is based upon the national allocation plan notified to the Commission which was not rejected under Article 9(3) of Directive 2003/87/EC or on which the Commission has accepted amendments and that correction results from improvements in data, the Commission shall instruct the Central Administrator to enter the corresponding correction into the national allocation plan table held in the Community independent transaction log.

All such corrections relating to new entrants shall be made in accordance with the automatic national allocation plan table change process as set out in Annex XIa to this Regulation.

All such corrections not relating to new entrants shall be made in accordance with the initialisation procedures as set out in Annex XIV to this Regulation.

In all other cases, the Member State shall notify the correction to its national allocation plan to the Commission and if the Commission does not reject this correction in accordance with the procedure in Article 9(3) of Directive 2003/87/EC, the Commission shall instruct the Central Administrator to enter the corresponding correction into the national allocation plan table held in the Community independent transaction log in accordance with the initialisation procedures set out in Annex XIV to this Regulation.

**▼B**

3. The registry administrator shall, subsequent to any correction made pursuant to paragraph 2 which occurs after allowances have been issued under Article 45 and which reduces the total quantity of allowances issued under Article 45 for the 2008-2012 period or subsequent five-year periods, convert the number of allowances specified by the competent authority into AAUs by removing the allowance element from the unique unit identification code of each such AAU comprising the elements set out in Annex VI.

The correction shall take place in accordance with the correction to allowances process set out in Annex IX.

**▼B***Article 45***Issue of allowances**

After the national allocation plan table has been entered into the Community independent transaction log and, subject to Article 44(2), by 28 February of the first year of the 2008-2012 period and by 28 February of the first year of each subsequent five-year period, the registry administrator shall issue the total quantity of allowances set out in the national allocation plan table into the Party holding account by converting an equal quantity of AAUs held in that holding account into allowances.

This conversion shall take place through adding the allowance element to the unique unit identification code of each such AAU, comprising the elements set out in Annex VI.

The issue of allowances for the 2008-2012 period and each subsequent five-year period shall take place in accordance with the allowance issue (2008-2012 onwards) process set out in Annex IX.

**▼M1***Article 46***Allocation of allowances to operators**

Without prejudice to Articles 44(2) and 47, by 28 February 2008 and by 28 February in each year thereafter, the registry administrator shall transfer from the Party holding account to the relevant operator holding account the proportion of the total quantity of allowances issued by any registry administrator under Article 45 which has been allocated to the corresponding installation for that year in accordance with the relevant section of the national allocation plan table.

Where foreseen for an installation in the national allocation plan of the Member State, the registry administrator may transfer that proportion at a later date of each year.

Allowances shall be allocated in accordance with the allowance allocation process set out in Annex IX.

**▼B***Article 47***Surrender of allowances on instruction of the competent authority**

If instructed to do so by the competent authority pursuant to Article 16(1) of Directive 2003/87/EC, the registry administrator shall surrender part or all of the proportion of the total quantity of allowances issued under Article 45 which has been allocated to an installation for a specific year, by entering the number of surrendered allowances into the section of the surrendered allowance table designated for that installation for that year. These surrendered allowances shall remain in the Party holding account.

Allowances surrendered on instruction of the competent authority shall be surrendered in accordance with the allowance allocation process set out in Annex IX.

**▼M1***Article 48***Allocation of allowances to new entrants**

If instructed to do so by the competent authority, the registry administrator shall transfer a proportion of allowances issued by any registry administrator under Article 45 that are in the Party holding account to the operator holding account of a new entrant in accordance with the

**▼M1**

relevant section of the national allocation plan table for that new entrant for the year in question.

Allowances shall be transferred in accordance with the allowance allocation process set out in Annex IX.

*Article 48a***Allocation of allowances following their sale by Member State**

If instructed to do so by the competent authority following a sale of allowances held by a Member State, the registry administrator shall transfer a quantity of allowances from the Party holding account to the person holding account or operator holding account of the buyer of allowances.

Allowances transferred within the same registry shall be transferred in accordance with the 'internal transfer' process set out in Annex IX. Allowances transferred from one registry to another will be transferred in accordance with the 'external transfer (2008 to 2012 onwards)' process set out in Annex IX.

**▼B***SECTION 3**Transfers and eligibility**Article 49***Transfers of allowances and Kyoto units by account holders**

1. The registry administrator shall carry out any transfer between holding accounts referred to in Article 11(1) and (2):

- (a) within its registry as requested by an account holder in accordance with the internal transfer process set out in Annex IX;
- (b) between registries as requested by an account holder for allowances issued for the 2005-2007 period in accordance with the external transfer (2005-2007) process set out in Annex IX; and
- (c) between registries as requested by an account holder for allowances issued for the 2008-2012 period and subsequent five-year periods and Kyoto units in accordance with the external transfer (2008-2012 onwards) process set out in Annex IX.

2. Allowances may only be transferred from an account in a registry to an account in a third country registry or the CDM Registry, or acquired from an account in a third country registry or the CDM Registry by an account in a registry, where an agreement has been concluded in accordance with Article 25(1) of Directive 2003/87/EC and such transfers are in accordance with any provisions relating to the mutual recognition of allowances under that agreement drawn up by the Commission pursuant to Article 25(2) of Directive 2003/87/EC.

*Article 50***Eligibility and the commitment period reserve**

1. ►**M1** When a communication link is established between the UNFCCC independent transaction log and the Community independent transaction log in accordance with Article 7 of this Regulation a Member State may not transfer or acquire ERUs or AAUs, until 16 months have elapsed since the submission of its report in accordance with Article 7(1) of Decision No 280/2004/EC, unless the Secretariat to the UNFCCC has informed that Member State that compliance procedures will not be commenced. ◀

**▼B**

Pursuant to Article 8 of Decision No 280/2004/EC, if the Secretariat to the UNFCCC informs a Member State that it does not meet the requirements allowing it to transfer or acquire ERUs or AAUs, or use CERs, the relevant body of the Member State shall instruct the registry administrator not to initiate those transactions requiring such eligibility.

**▼M1**

2. When, from 1 January 2008 onwards, the holdings of ERUs, CERs, AAUs and RMUs valid for the relevant five-year period in the Party holding accounts, operator holding accounts, person holding accounts and retirement accounts in a Member State become less than 1 per cent higher than the commitment period reserve, calculated as 90 per cent of the Member State's assigned amount or 100 per cent of five times its most recently reviewed inventory, whichever is the lowest, the Central Administrator shall notify that Member State.

**▼B***SECTION 4**Verified emissions***▼M1***Article 51***Verified emissions of an installation**

1. Upon the verification as satisfactory, in accordance with the detailed requirements established by the Member State pursuant to Annex V of Directive 2003/87/EC, of an operator's report on the emissions from an installation during a previous year, each verifier, including those competent authorities acting as verifiers shall enter or approve the entry of the annual verified emissions for that installation for that year into the section of the verified emissions table designated for that installation for that year in accordance with the verified emissions update process set out in Annex VIII to this Regulation.

2. The registry administrator may prohibit the entry of the annual verified emissions for an installation until the competent authority has received the verified emissions report submitted by operators pursuant to Article 14(3) of Directive 2003/87/EC for that installation, and enabled the registry to receive the annual verified emissions.

3. The competent authority may instruct the registry administrator to correct the annual verified emissions for an installation for a previous year to ensure compliance with the detailed requirements established by the Member State pursuant to Annex V to Directive 2003/87/EC, by entering the corrected annual verified emissions for that installation for that year into the section of the verified emissions table designated for that installation for that year in accordance with the verified emissions update process set out in Annex VIII to this Regulation.

4. If the competent authority instructs the registry administrator to correct the annual verified emissions for an installation for a previous year after the deadline specified in Article 6(2) of Directive 2003/87/EC for surrendering allowances equal to the emissions of that previous year, the Central Administrator shall only allow such a correction if it was informed of the competent authority's decision on the new compliance status applicable to the installation as a result of the correction of the verified emissions.

**▼B***SECTION 5****Surrender of allowances****Article 52***Surrender of allowances**

An operator shall surrender allowances for an installation by requesting or, where provided in Member State legislation, be deemed to have requested, the registry administrator to:

- (a) transfer a specified number of allowances for a specified year from the relevant operator holding account into the Party holding account of that registry;
- (b) enter the number of transferred allowances into the section of the surrendered allowance table designated for that installation for that year.

The transfer and entry shall take place in accordance with the allowance surrender process set out under Annex IX.

*Article 53***The use of CERs and ERUs**

The use of CERs and ERUs by an operator in accordance with Article 11a of Directive 2003/87/EC in respect of an installation shall take place through an operator requesting the registry administrator to:

- (a) transfer a specified number of CERs or ERUs for a specified year from the relevant operator holding account into the Party holding account of that registry;
- (b) enter the number of transferred CERs and ERUs into the section of the surrendered allowance table designated for that installation for that year.

**▼M2**

The registry administrator shall only accept requests to surrender CERs and ERUs up to the percentage of allocation to each installation specified by Member State legislation. The CITL shall reject any request to surrender CERs and ERUs that would surpass the maximum allowed amount of CERs and ERUs to be surrendered in the Member State.

**▼B**

The transfer and entry shall take place in accordance with the allowance surrender process set out under Annex IX.

*Article 54***Surrender of force majeure allowances**

The issue of force majeure allowances in accordance with Article 43 shall constitute the surrender of those force majeure allowances.

**▼M1***Article 55***Calculation of compliance status figures**

Upon an entry being made into the section of the surrendered allowance table or verified emissions table designated for an installation, the registry administrator shall determine the following:

**▼ M1**

- (a) for the years 2005, 2006 and 2007, the compliance status figure for that installation and for each year by calculating the sum of all allowances surrendered pursuant to Articles 52, 53 and 54 for the 2005 to 2007 period minus the sum of all verified emissions in the current five-year period up to and including the current year;
- (b) for the year 2008 and each year thereafter, the compliance status figure for that installation and for each year by calculating the sum of all allowances surrendered pursuant to Articles 52, 53 and 54 for the current period minus the sum of all verified emissions from the year 2008 up to and including the current year, plus a correction factor.

The correction factor referred to in point (b) shall be zero if the 2007 figure was greater than zero, but shall remain as the 2007 figure if the 2007 figure is less than or equal to zero.

**▼ B***Article 56***Entries into the compliance status table**

1. The registry administrator shall enter the installation's compliance status figure calculated in accordance with Article 55 for each year into the section of the compliance status table designated for that installation.
2. On 1 May 2006 and on 1 May of each year thereafter the registry administrator shall notify the compliance status table to the competent authority. In addition, the registry administrator shall notify any changes to the entries for previous years of the compliance status table to the competent authority.

**▼ M1***Article 57***Entries into the verified emissions table**

Where, on 1 May 2006 and on 1 May of each year thereafter, no verified emissions figure has been entered into the verified emissions table for an installation for a previous year, any substitute emissions figure determined pursuant to Article 16(1) of Directive 2003/87/EC which has not been calculated as closely as possible in accordance with the detailed requirements established by the Member State pursuant to Annex V of Directive 2003/87/EC shall not be entered into the verified emissions table.

**▼ B***SECTION 6****Cancellation and retirement****Article 58***Cancellation and retirement of surrendered allowances and force majeure allowances for the 2005-2007 period****▼ M1**

On 30 June 2006, 2007 and 2008 the registry administrator shall cancel a number of allowances, CERs, and *force majeure* allowances held in the Party holding account pursuant to Articles 52, 53 and 54. The number of allowances, CERs, and *force majeure* allowances to be cancelled shall be equal to the total number at the moment of cancellation of surrendered allowances entered in the surrendered allowance table for the periods 1 January 2005 until the moment of cancellation in 2006, from the moment of cancellation in 2006 until the moment of

**▼M1**

cancellation in 2007 and from the moment of cancellation in 2007 until the moment of cancellation in 2008.

**▼B**

Cancellation shall take place by transferring CERs, with the exception of CERs resulting from projects referred to in Article 11a(3) of Directive 2003/87/EC, from the Party holding account into the cancellation account for the 2008-2012 period, and by transferring allowances and force majeure allowances from the Party holding account to the retirement account for the 2005-2007 period, in accordance with the retirement (2005-2007) process set out in Annex IX.

**▼M1***Article 59***Cancellation and retirement of surrendered allowances for the 2008 to 2012 period and subsequent periods**

1. By 30 June 2009 and 30 June of each year thereafter, the registry administrator shall cancel allowances surrendered for the 2008 to 2012 period and each subsequent five year period, by:

- (a) converting a number of allowances issued for that five-year period and held in the Party holding account, equal to the total number of allowances surrendered pursuant to Article 52 as entered in the surrendered allowance table since 1 January of the first year of the relevant period until 31 May of the subsequent year and since 1 June of the preceding year until 31 May of each of the subsequent years, into AAUs by removing the allowance element from the unique unit identification code of each such AAU comprising the elements set out in Annex VI in accordance with the 'conversion of surrendered allowances for retirement (2008 to 2012 onwards)' process set out in Annex IX; and
- (b) transferring a number of Kyoto units of the type specified by the competent authority, with the exception of Kyoto units resulting from projects referred to in Article 11a(3) of Directive 2003/87/EC, equal to the total number of allowances surrendered pursuant to Articles 52 and 53 as entered in the surrendered allowance table since 1 January of the first year of the relevant period until 31 May of the subsequent year and from 1 June of the preceding year until 31 May of each of the subsequent years, from the Party holding account to the retirement account for the relevant period in accordance with the 'retirement of surrendered allowances (2008 to 2012 onwards)' process set out in Annex IX.

2. After 30 June 2013 and 30 June of the year after the end of each subsequent five-year period, the registry administrator may retire any allowances not yet allocated to operators by converting them into AAUs through removing the allowance element from the unique unit identification code of each such AAU comprising the elements set out in Annex VI in accordance with the 'conversion of unallocated allowances for retirement (2008 to 2012 onwards)' process set out in Annex IX and transferring them from the Party holding account to the retirement account for the relevant period in accordance with the 'retirement of unallocated allowances (2008 to 2012 onwards)' process set out in Annex IX.

**▼B***SECTION 7**Cancellation and replacement**Article 60***Cancellation and replacement of allowances issued for the 2005-2007 period**

On 1 May 2008, each registry administrator shall cancel and, if instructed to do so by the competent authority, replace allowances held in his registry in accordance with the allowance cancellation and replacement process set out in Annex IX by:

**▼M1**

- (a) transferring a number of allowances, equal to the number of allowances held in the registry issued for the 2005 to 2007 period by any registry minus the number of allowances at the moment of cancellation and replacement surrendered pursuant to Articles 52 and 54 since the moment of retirement on 30 June of the preceding year, from their holding accounts referred to in Article 11(1) and (2) to the cancellation account for the 2005 to 2007 period;

**▼B**

- (b) if instructed to do so by the competent authority, issuing a number of replacement allowances specified by the competent authority by converting an equal number of AAUs issued for the 2008-2012 period held in the Party holding account into allowances by adding the allowance element to the unique unit identification code of each such AAU comprising the elements set out in Annex VI;
- (c) transferring any such replacement allowances referred to in (b) from the Party holding account into the operator and person holding accounts specified by the competent authority from which allowances were transferred under point (a).

*Article 61***Cancellation and replacement of allowances issued for the 2008-2012 period and subsequent periods**

On 1 May in 2013 and on 1 May in the first year of each subsequent five year period, each registry administrator shall cancel and replace allowances held in its registry in accordance with the allowance cancellation and replacement process set out in Annex IX by:

**▼M1**

- (a) transferring all allowances allocated to operators for the preceding five-year period from their operator and person holding accounts to the Party holding account;
- (b) converting a number of allowances, equal to the number of allowances held in the registry allocated by any registry for the preceding five-year period minus the number of allowances surrendered pursuant to Article 52 since 31 May of the preceding year, into AAUs by removing the allowance element from the unique unit identification code of each such AAU comprising the elements set out in Annex VI;

**▼B**

- (c) issuing an equal number of replacement allowances by converting AAUs issued for the current period held in the Party holding account into allowances by adding the allowance element to the unique unit identification code of each such AAU comprising the elements set out in Annex VI;



**▼B**

- (d) transferring a number of those allowances issued under point (c) for the current period from the Party holding account into each operator and person holding account from which allowances were transferred under point (a), equal to the number of allowances that were transferred from those accounts under point (a).

*SECTION 8**Voluntary cancellation and retirement**Article 62***Voluntary cancellation of allowances and Kyoto units**

1. The registry administrator shall carry out any request from an account holder pursuant to Article 12(4) of Directive 2003/87/EC to voluntarily cancel allowances or Kyoto units held in any of his holding accounts. The voluntary cancellation of allowances and Kyoto units shall take place in accordance with paragraphs 2 and 3.
2. For allowances issued for the 2005-2007 period the registry administrator shall transfer the number of allowances specified by the account holder from his account to the cancellation account for the 2005-2007 period in accordance with the allowance cancellation (2005-2007) process set out in Annex IX.
3. For Kyoto units and allowances issued for the 2008-2012 period and subsequent five-year periods the registry administrator shall transfer the number of Kyoto units or allowances specified by the account holder from his account to the appropriate cancellation account for the 2008-2012 period and subsequent five-year periods in accordance with the cancellation (2008-2012 onwards) process set out Annex IX.
4. Allowances or Kyoto units held in a cancellation account may not be transferred to any other account in the registries system or to any account in the CDM registry or in a third country registry.

*Article 63***Retirement of Kyoto units****▼M1**

1. If instructed by the relevant body of the Member State, the registry administrator shall transfer any quantity and types of Kyoto units specified by that body which have not already been retired pursuant to Article 59 from the Party holding account to the appropriate retirement account in his registry in accordance with the 'retirement of Kyoto units (2008 to 2012 onwards)' process set out in Annex IX.

**▼B**

2. An operator or person shall not be able to transfer allowances from his operator or person holding account into a retirement account.
3. Kyoto units held in a retirement account may not be transferred to any other account in the registries system or to any account in the CDM registry or in a third country registry.

▼ M1

## CHAPTER VA

**OPERATION OF REGISTRIES OF MEMBER STATES WHICH DO NOT HAVE AAUS***Article 63a***Operation of registries of Member States which do not have AAUs**

1. Member States that are not able to issue AAUs due to reasons other than being determined to be ineligible to transfer and acquire ERUs and AAUs, and use CERs in accordance with the provisions of Decision 11/CMP.1 of the Kyoto Protocol to the UNFCCC shall establish, operate and maintain their registries in a consolidated manner with the Community registry. Articles 3(3), 4, 6(1), 11(1), (3) and (4), 30(1), 34, 35, 36, 44(3), 45, 49(1), 59, 60, 61, 65 shall not apply to those registries.

2. From 1 January 2008, the registries operated in accordance with paragraph 1 shall be capable of executing the processes applicable to them in Annexes VIII, IX, X, XI and XIa.

*Article 63b***Communication link between registries operated in accordance with Article 63a and the Community independent transaction log**

Registries operated in accordance with Article 63a shall communicate with the Community independent transaction log through a communication link established by the Community registry.

The Central Administrator shall activate the communication link after the testing procedures set out in Annex XIII and the initialisation procedures set out in Annex XIV have been completed successfully and notify the administrator of the Community registry thereof.

*Article 63c***Registries operated in accordance with Article 63a: detection of discrepancies and inconsistencies by the UNFCCC independent transaction log**

The UNFCCC independent transaction log shall inform a registry operated in accordance with Article 63a of any discrepancy detected in a process which that registry has initiated through the administrator of the Community registry.

The registry operated in accordance with Article 63a shall terminate the process and the administrator of the Community registry shall inform the UNFCCC independent transaction log thereof. The administrator of the registry operated in accordance with Article 63a, and any other registry administrators concerned shall immediately inform the relevant account holders that the process has been terminated.

*Article 63d***Registries operated in accordance with Article 63a: Finalisation of processes concerning accounts, verified emissions and automatic national allocation plan table changes**

When there is a communication link established between the two independent transaction logs and if processes concerning accounts, verified emissions and automatic national allocation plan table changes are directed through the UNFCCC independent transaction log, those

▼ M1

processes shall be final when both independent transaction logs successfully inform the Community registry that they have not detected any discrepancies in the proposal initiated by the registry operated in accordance with Article 63a.

In all cases different from those referred to in the first paragraph, all processes referred to in Annexes VIII and XIa shall be final when the Community independent transaction log successfully informs the Community registry that it has not detected any discrepancies in the proposal initiated by the registry operated in accordance with Article 63a.

*Article 63e***Registries operated in accordance with Article 63a: finalisation of processes concerning transactions within registries**

All processes referred to in Annex IX, except the external transfer process, shall be final when both independent transaction logs inform the Community registry that they have not detected any discrepancies in the proposal initiated by the registry operated in accordance with Article 63a and the Community registry has successfully sent confirmation to both independent transaction logs that the registry operated in accordance with Article 63a has updated its records in accordance with its proposal.

However, prior to the communication link between the Community independent transaction log and the UNFCCC independent transaction log being established, all processes referred to in Annex IX, except the external transfer process, shall be final when the Community independent transaction log informs the Community registry that it has not detected any discrepancies in the proposal initiated by the registry operated in accordance with Article 63a and the Community registry has successfully sent confirmation to the Community independent transaction log that the registry operated in accordance with Article 63a has updated its records in accordance with its own proposal.

*Article 63f***Registries operated in accordance with Article 63a: finalisation of the external transfer process**

The external transfer process involving a registry operated in accordance with Article 63a shall be final when both independent transaction logs inform the acquiring registry (or the Community registry if the acquiring registry is a registry operated in accordance with Article 63a) that they have not detected any discrepancies in the proposal sent by the initiating registry (or the Community registry if the initiating registry is a registry operated in accordance with Article 63a) and the acquiring registry (or the Community registry if the acquiring registry is a registry operated in accordance with Article 63a) has successfully sent confirmation to both independent transaction logs that the acquiring registry has updated its records in accordance with the initiating registry's proposal.

However, prior to the communication link between the Community independent transaction log and the UNFCCC independent transaction log being established, the external transfer process involving a registry operated in accordance with Article 63a shall be final when the Community independent transaction log informs the acquiring registry (or the Community registry if the acquiring registry is a registry operated in accordance with Article 63a) that it has not detected any discrepancies in the proposal sent by the initiating registry (or the Community registry if the initiating registry is a registry operated in accordance with Article 63a) and the acquiring registry (or the Community registry if the acquiring registry is a registry operated in accordance with Article 63a) has successfully sent confirmation to the

**▼ M1**

Community independent transaction log that it has updated its records in accordance with the initiating registry's proposal.

*Article 63g***Registries operated in accordance with Article 63a: Authentication**

Registries operated in accordance with Article 63a shall be authenticated to the UNFCCC independent transaction log through the Community registry with the digital certificates issued by the Secretariat to the UNFCCC, or an entity designated by it.

However, until the communication link between the Community independent transaction log and UNFCCC independent transaction log is established, they shall be authenticated to the Community independent transaction log through the Community registry using digital certificates and usernames and passwords as specified in Annex XV. The Commission, or an entity designated by it, shall act as the certification authority for all digital certificates and shall distribute the usernames and passwords.

*Article 63h***Special provisions concerning certain obligations of registry administrators of registries operated in accordance with Article 63a**

The obligations provided for in Article 71 and Article 72(2) and (3) shall, as regards registry administrators of registries operated in accordance with Article 63a, be carried out by the administrator of the Community Registry.

**▼ M2***Article 63i***Registries operated in accordance with Article 63a: accounts**

1. Registries operated in accordance with Article 63a shall contain at least two Party holding accounts created in accordance with Article 12.
2. One of the Party holding accounts shall be called the gateway deposit account. Only the gateway deposit account shall hold allowances with an initial unit type of 1.
3. Operator and personal holding accounts in registries operated in accordance with Article 63a shall be capable of holding allowances with an initial unit type of 1, allowances with an initial unit type of 0 and a supplementary unit type of 4, and, where authorised by Member State or Community legislation, CERs or ERUs. Account holders of these accounts shall not be allowed to initiate any transactions with allowances of an initial unit type of 1, with the exception of their conversion to allowances of an initial unit type of 0 and a supplementary unit type of 4, and their external transfer to registries not operated in accordance with Article 63a.

**▼ M1***Article 63j***Registries operated in accordance with Article 63a: national allocation plan table for the 2008 to 2012 period and each subsequent five-year period**

Registries operated in accordance with Article 63a shall, subsequent to any correction to the national allocation plan table made pursuant to Article 44(2) which occurs after allowances have been issued under Article 45 and which reduces the total quantity of allowances issued

**▼M1**

under Article 45 for the 2008 to 2012 period or subsequent five-year periods, transfer the number of allowances specified by the competent authority from the holding accounts referred to in Articles 11(2) and 63i and in which the allowances are held to the cancellation account of the Community registry for the relevant period.

*Article 63k***Registries operated in accordance with Article 63a: issue of allowances**

The administrator of a registry operated in accordance with Article 63a shall after the national allocation plan table has been entered into the Community independent transaction log and, subject to Article 44(2), by 28 February of the first year of the 2008 to 2012 period and by 28 February of the first year of each subsequent five-year period, issue the total quantity of allowances set out in the national allocation plan table into the Party holding account.

When issuing such allowances the registry administrator shall assign a unique unit identification code to each allowance comprising the elements set out in Annex VI, whereby the initial unit type shall be 0 and the supplementary unit type shall be 4.

Allowances shall be issued in accordance with the allowance issue (registries referred to in Article 63a) process set out in Annex IX.

**▼M2***Article 63l***Registries operated in accordance with Article 63a: transfers of allowances between operator holding accounts in registries operated in accordance with Article 63a and other registries**

1. The registries operated in accordance with Article 63a shall carry out any transfer of allowances of an initial unit type of 0 and a supplementary unit type of 4 between a holding account within its registry or between two registries operated in accordance with Article 63a as requested by the account holder using the internal transfer process set out in Annex IX.

2. The registries operated in accordance with Article 63a shall not carry out any transfer of allowances of an initial unit type of 0 and a supplementary unit type of 4 to registries not operated in accordance with Article 63a.

3. The registries operated in accordance with Article 63a shall carry out any transfer of allowances of an initial unit type of 1 to registries not operated in accordance with Article 63a as requested by the account holder using the external transfer process set out in Annex IX.

4. The registries operated in accordance with Article 63a shall not carry out any transfer of allowances of an initial unit type of 1 to other holding accounts in the registry or to other registries operated in accordance with Article 63a, with the exception of transfers during the conversion of allowances with an initial unit type of 1 to allowances with an initial unit type of 0 and a supplementary unit type of 4.

*Article 63la***Conversion of allowances**

1. The registry administrator of a registry operated in accordance with Article 63a shall carry out any conversion of an allowance of an initial unit type of 1 held in its registry into an allowance of an initial unit type of 0 and a supplementary unit type of 4 as requested by an

**▼ M2**

account holder using the conversion of allowances to supplementary unit type 4 process by:

- (a) transferring the allowance to be converted to the gateway deposit account of the registry; and
- (b) issuing an equal amount of allowance with an initial unit type of 0 and a supplementary unit type of 4 to the account where the allowances to be converted were transferred from.

2. Where the registry administrator of a registry operated in accordance with Article 63a receives a request from an account holder to convert allowances with an initial unit type of 0 and a supplementary unit type of 4 into allowances of an initial unit type of 1, it shall verify whether the amount requested to be converted is lower than or equal to the balance of the gateway deposit account. If the amount requested to be converted is higher than the balance of the gateway deposit account, the registry administrator shall refuse to carry out the transaction. In other cases, the registry administrator shall carry out the transaction as requested by the account holder using the conversion of allowances to initial unit type of 1 process by:

- (a) transferring the allowances requested to be converted into the cancellation account; and
- (b) transferring an equal amount of allowances with an initial unit type of 1 to the account where the allowances to be converted were transferred from.

3. The administrator of the Community registry may convert AAUs into allowances of an initial unit type of 1 and shall transfer all such converted allowances into a gateway deposit account. Any allowances remaining in gateway deposit accounts after 30 June of the year following the end of the 2008-12 period and subsequent periods shall be transferred to the Community registry.

4. The Central Administrator shall make available to administrators of registries operated in accordance with Article 63a the data exchange format necessary for exchanging data between such registries and transaction logs concerning the conversions referred to in paragraphs 1 and 2.

**▼ M1***Article 63m***Registries operated in accordance with Article 63a: cancellation under Article 58 or Article 62**

When carrying out a cancellation and retirement in accordance with Article 58 or a voluntary cancellation in accordance with Article 62, the administrator of a registry operated in accordance with Article 63a shall carry out the cancellation by transferring allowances as required under Article 58 or 62 into the cancellation account or the retirement account of the Community registry.

*Article 63n***Registries operated in accordance with Article 63a: cancellation and retirement of surrendered allowances and CERs for the 2008 to 2012 period and subsequent periods**

1. By 30 June 2009 and on 30 June each year thereafter, the registry administrator of a registry operated in accordance with Article 63a shall cancel a number of allowances and CERs held in the Party holding account pursuant to Articles 52 and 53.

The number of allowances and CERs to be cancelled shall be equal to the total number of surrendered allowances entered into the surrendered

**▼ M1**

allowances table since 1 January of the first year of the relevant period until 31 May of the subsequent year and since 1 June of the preceding year until 31 May of each of the subsequent years.

2. Cancellation shall take place by transferring the allowances and CERs, with the exception of CERs resulting from projects referred to in Article 11a(3) of Directive 2003/87/EC, from the Party holding account into the retirement account of the Community Registry for the relevant period in accordance with the 'retirement (registries referred to in Article 63a)' process set out in Annex IX.

**▼ M2****▼ M1***Article 63p*

**Registries operated in accordance with Article 63a: cancellation and replacement of allowances issued for the 2008 to 2012 period and subsequent periods**

1. On 1 May in 2013 and on 1 May in the first year of each subsequent five year period, each registry administrator of a registry operated in accordance with Article 63a shall cancel and replace allowances held in its registry in accordance with the allowance cancellation and replacement process set out in Annex IX by:

- (a) transferring a number of allowances, equal to the number of allowances issued for the preceding five-year period minus the number of allowances surrendered pursuant to Article 52 since 31 May of the preceding year, from their holding accounts referred to in Articles 11(2) and 63i to the cancellation account of the Community registry for the relevant period;
- (b) issuing an equal number of replacement allowances with a supplementary unit type of 4 for the current period into the Party holding account and assigning to each of these allowances a unique unit identification code comprising the elements set out in Annex VI;
- (c) transferring a number of those allowances issued in accordance with point (b) for the current period from the Party holding account into each operator and person holding account from which allowances were transferred in accordance with point (a), equal to the number of allowances that were transferred from those accounts under point (a).

**▼ B**

## CHAPTER VI

**SECURITY STANDARDS, AUTHENTICATION AND ACCESS RIGHTS***Article 64***Security standards**

- 1. Each registry shall comply with the security standards set out in Annex XV.
- 2. The Community independent transaction log shall comply with the security standards set out in Annex XV.

*Article 65***Authentication**

The Member States and the Community shall use the digital certificates issued by the Secretariat to the UNFCCC, or an entity designated by it,

**▼B**

to authenticate their registries and the Community independent transaction log to the UNFCCC independent transaction log.

However, from 1 January 2005 until the communication link between the Community independent transaction log and UNFCCC independent transaction log is established, the identity of each registry and the Community independent transaction log shall be authenticated using digital certificates and usernames and passwords as specified in Annex XV. The Commission, or an entity designated by it, shall act as the certification authority for all digital certificates and shall distribute the usernames and passwords.

*Article 66***Access to registries**

1. An authorised representative shall only have access to the accounts within a registry which he is authorised to access or be able to request the initiation of processes which he is authorised to request pursuant to Article 23. This access or these requests shall take place through a secure area of the website for that registry.

The registry administrator shall issue each authorised representative with a username and password to permit the level of access to accounts or processes to which he is authorised. Registry administrators may apply additional security requirements at their discretion if they are compatible with the provisions of this Regulation.

2. The registry administrator may assume that a user who has entered a matching username and password is the authorised representative registered under that username and password, until such point that the authorised representative informs the registry administrator that the security of his password has been compromised and requests a replacement. The registry administrator shall promptly issue such replacement passwords.

3. The registry administrator shall ensure that the secure area of the registry website is accessible to any computer using a widely available Internet browser. Communications between the authorised representatives and the secure area of the registry website shall be encrypted in accordance with the security standards in Annex XV.

4. The registry administrator shall take all necessary steps to ensure that unauthorised access to the secure area of the registry website does not occur.

*Article 67***Suspension of access to accounts**

1. The Central Administrator and each registry administrator may only suspend an authorised representative's password to any accounts or processes to which he would otherwise have access if the authorised representative has, or that administrator has reasonable grounds to believe the authorised representative has:

- (a) attempted to access accounts or processes which he is not authorised to access;
- (b) repeatedly attempted to access an account or a process using a non-matching username and password; or
- (c) attempted, or is attempting, to undermine the security of the registry or the registries system.

2. Where access to an operator holding account has been suspended pursuant to paragraph 1 or pursuant to Article 69 between 28 April and 30 April in any year from 2006 onwards, the registry administrator



**▼B**

shall, if so requested by the account holder and following submission of his authorised representative's identity by means of supporting evidence, surrender the number of allowances and use the number of CERs and ERUs specified by the account holder in accordance with the allowance surrender process set out in Article 52 and 53 and Annex IX.

## CHAPTER VII

## AVAILABILITY AND RELIABILITY OF INFORMATION

*Article 68***Availability and reliability of registries and the Community independent transaction log**

The Central Administrator and each registry administrator shall take all reasonable steps to ensure that:

- (a) the registry is available for access by account holders 24 hours a day, 7 days a week, and that the communication link between the registry and the Community independent transaction log is maintained 24 hours a day, 7 days a week, thereby providing backup hardware and software in the event of a breakdown in operations of the primary hardware and software;
- (b) the registry and the Community independent transaction log respond promptly to requests made by account holders.

They shall ensure that the registry and Community independent transaction log incorporate robust systems and procedures for the safeguarding of all data and the prompt recovery of all data and operations in the event of a disaster.

They shall keep interruptions to the operation of the registry and Community independent transaction log to a minimum.

*Article 69***Suspension of access**

The Central Administrator may suspend access to the Community independent transaction log and a registry administrator may suspend access to his registry if there is a breach of security of the Community independent transaction log or of a registry which threatens the integrity of the Community independent transaction log or of a registry or the integrity of the registries system and the back-up facilities under Article 68 are similarly affected.

*Article 70***Notification of suspension of access**

1. In the event of a breach of security of the Community independent transaction log that may lead to suspension of access, the Central Administrator shall promptly inform registry administrators of any risks posed to registries.
2. In the event of a breach of security of a registry that may lead to suspension of access, the relevant registry administrator shall promptly inform the Central Administrator who shall, in turn, promptly inform other registry administrators of any risks posed to registries.
3. If the registry administrator becomes aware that it is necessary to suspend either access to accounts or other operations of the registry, he shall give all relevant account holders and verifiers, the Central Admin-

**▼B**

istrator and other registry administrators such prior notice of the suspension as is reasonably practicable.

4. If the Central Administrator becomes aware that it is necessary to suspend access to operations of the Community independent transaction log, it shall give all registry administrators such prior notice of the suspension as is reasonably practicable.

5. The notices referred to in paragraphs 3 and 4 shall include the likely duration of the suspension and shall be clearly displayed on the public area of that registry's web site or on the public area of the Community independent transaction log's web site.

*Article 71***Testing area of each registry and the Community independent transaction log**

1. Each registry administrator shall establish a testing area within which any new version or release of a registry can be tested in accordance with the testing procedures set out in Annex XIII so as to ensure that:

- (a) any testing procedures on a new version or release of a registry are completed without reducing the availability to account holders of the version or release of the registry which currently has a communication link with the Community independent transaction log or UNFCCC independent transaction log; and
- (b) any communication link between a new version or release of a registry and the Community independent transaction log or UNFCCC independent transaction log is established and activated with minimum disruption to its account holders.

2. The Central Administrator shall establish a testing area so as to facilitate testing procedures referred to in paragraph 1.

3. The registry administrators and the Central Administrator shall ensure that the hardware and software of their testing area shall perform in a manner that is representative of the performance of the primary hardware and software referred to in Article 68.

*Article 72***Change management**

1. The Central Administrator shall coordinate with registry administrators and the Secretariat to the UNFCCC the preparation and implementation of any amendments to this Regulation resulting in changes in the functional and technical specifications of the registry system before their implementation. ► **M1** After such coordination, the Central Administrator shall decide on the date of implementation by registries and the Community independent transaction log of each new version of the functional and technical specifications for data exchange standards for registry systems under the Kyoto Protocol. ◀

**▼M1**

2. If a new version or release of a registry is required, each registry administrator and the Central Administrator shall successfully complete the testing procedures set out in Annex XIII before a communication link is established and activated between the new version or release of that registry and the Community independent transaction log or UNFCCC independent transaction log.

2a. The Central Administrator shall convene regular meetings of the registry administrators to consult them on issues and procedures related to change management, incident management and any other issues of a

**▼ M1**

technical nature related to the operation of registries and the implementation of this Regulation.

**▼ B**

3. Each registry administrator shall continuously monitor the availability, reliability and efficiency of his registry in order to ensure a level of performance which meets the requirements of this Regulation. If, as a result of this monitoring or the suspension of the communication link pursuant to Article 6(3), a new version or release of a registry is required, each registry administrator shall successfully complete the testing procedures set out in Annex XIII before a communication link is established and activated between the new version or release of that registry and the Community independent transaction log or UNFCCC independent transaction log.

## CHAPTER VIII

**RECORDS AND FEES***Article 73***Records****▼ M1**

1. The Central Administrator and each registry administrator shall store records concerning all processes and account holders set out in Annexes III, IV, VIII, IX, X, XI and XIa for 15 years or until any questions of implementation relating to them have been resolved, whichever is the later.

**▼ B**

2. Records shall be stored in accordance with the data logging standards elaborated pursuant to the UNFCCC or the Kyoto Protocol.

*Article 74***Fees**

Any fees charged by the registry administrator to account holders shall be reasonable and shall be clearly displayed on the public area of that registry's web site. Registry administrators shall not differentiate any such fees on the basis of the location of an account holder within the Community.

Registry administrators shall not charge account holders for transactions of allowances pursuant to Article 49, Articles 52 to 54 and Articles 58 to 63.

## CHAPTER IX

**FINAL PROVISIONS***Article 75***Entry into force**

This Regulation shall enter into force on the day following that of its publication in the *Official Journal of the European Union*.

This Regulation shall be binding in its entirety and directly applicable in all Member States.

**▼B***ANNEX I***Hardware and software requirements of registries and the Community independent transaction log****Architecture requirements**

1. Each registry and the Community independent transaction log shall include the following hardware and software in their architecture:
  - (a) web server;
  - (b) application server;
  - (c) database server installed on a separate machine to that or those used for the web server and application server;
  - (d) firewalls.

**Communication requirements****▼M1**

2. When the communication link between the Community independent transaction log and the UNFCCC independent transaction log is not established:
  - (a) the record of the time in the Community independent transaction log and each registry shall be synchronised to Greenwich Mean Time;
  - (b) all processes concerning allowances, verified emissions, automatic national allocation plan table changes and accounts shall be completed by the exchange of data written in extensible markup language (XML) using the simple object access protocol (SOAP) version 1.1 over the hypertext transfer protocol (HTTP) version 1.1 (remote procedure call (RPC) encoded style).
3. When the communication link between the Community independent transaction log and the UNFCCC independent transaction log is established:
  - (a) the record of the time in the UNFCCC independent transaction log, Community independent transaction log and each registry shall be synchronised; and
  - (b) all processes concerning allowances and Kyoto units shall be completed by the exchange of data;

using the hardware and software requirements set out in the functional and technical specifications for data exchange standards for registry systems under the Kyoto Protocol, elaborated pursuant to Decision 24/CP.8 of the Conference of the Parties to the UNFCCC.

If processes concerning verified emissions, accounts and automatic national allocation plan table changes are completed through an exchange of data via the UNFCCC independent transaction log and thereon to the Community independent transaction log, the data exchange shall be carried out using the hardware and software requirements set out in the functional and technical specifications for data exchange standards for registry systems under the Kyoto Protocol, elaborated pursuant to Decision 24/CP.8 of the Conference of the Parties to the UNFCCC.

If processes concerning verified emissions, accounts and automatic national allocation plan table changes are completed through an exchange of data via the Community independent transaction log, the data exchange shall be carried out in accordance with point (b) of paragraph 2.

*ANNEX II***Tables to be contained in Member State registries**

1. Each Member State registry shall be capable of tabulating the following information which shall comprise the verified emissions table:
  - (a) Years: in individual cells from 2005 onwards in ascending order.
  - (b) Installation identification code: in individual cells comprising the elements set out in Annex VI and in ascending order.
  - (c) Verified emissions: the verified emissions for a specified year for a specified installation shall be entered into the cell connecting that year to that installation's identification code.
2. Each Member State registry shall be capable of tabulating the following information which shall comprise the surrendered allowances table:
  - (a) Years: in individual cells from 2005 onwards in ascending order.
  - (b) Installation identification code: in individual cells comprising the elements set out in Annex VI and in ascending order.
  - (c) Surrendered allowances: the number of allowances surrendered in accordance with Articles 52, 53 and 54 for a specified year for a specified installation shall be entered into the three cells connecting that year to that installation's identification code.
3. Each Member State registry shall be capable of tabulating the following information which shall comprise the compliance status table:
  - (a) Years: in individual cells from 2005 onwards in ascending order.
  - (b) Installation identification code: in individual cells comprising the elements set out in Annex VI and in ascending order.
  - (c) Compliance status: the compliance status for a specified year for a specified installation shall be entered into the cell connecting that year to that installation's identification code. The compliance status shall be calculated in accordance with Article 55.

**▼B***ANNEX III***Information concerning each operator holding account to be provided to the registry administrator****▼M2**

1. Points 1 to 3.1, 3.4 to 4.5 and point 6 of the information identifying the installation as listed in Section 14.1 of Annex I to Decision 2007/589/EC. The name of the operator should be identical to the name of the natural or legal person that is the holder of the relevant greenhouse gas permit. The name of the installation shall be identical to the name indicated in the relevant greenhouse gas permit.

**▼B**

2. The permit identification code specified by the competent authority, comprising the elements set out in Annex VI.
3. The installation identification code, comprising the elements set out in Annex VI.
4. The alphanumeric identifier specified by the operator for the account, which shall be unique within the registry.
5. Name, address, city, postcode, country, telephone number, facsimile number and e-mail address of the primary authorised representative of the operator holding account specified by the operator for that account.
6. Name, address, city, postcode, country, telephone number, facsimile number and e-mail address of the secondary authorised representative of the operator holding account specified by the operator for that account.
7. Name, address, city, postcode, country, telephone number, facsimile number and e-mail address of any additional authorised representatives of the operator holding account and their account access rights, specified by the operator for that account.
8. Evidence to support the identity of the authorised representatives of the operator holding account.

*ANNEX IV***Information concerning accounts referred to in Article 11(1), (3) and (4) and person holding accounts to be provided to the registry administrator**

1. Name, address, city, postcode, country, telephone number, facsimile number and e-mail address of the person requesting the opening of the person holding account.
2. Evidence to support the identity of the person requesting the opening of the person holding account.
3. The alphanumeric identifier specified by the Member State, the Commission or person for the account, which shall be unique within the registry.
4. Name, address, city, postcode, country, telephone number, facsimile number and e-mail address of the primary authorised representative of the account specified by the Member State, the Commission or person for that account.
5. Name, address, city, postcode, country, telephone number, facsimile number and e-mail address of the secondary authorised representative of the account specified by the Member State, the Commission or person for that account.
6. Name, address, city, postcode, country, telephone number, facsimile number and e-mail address of any additional authorised representatives of the account and their account access rights, specified by the Member State, the Commission or person for that account.
7. Evidence to support the identity of the authorised representatives of the account.



## ANNEX V

### Core terms and conditions

#### Structure and effect of core terms and conditions

1. The relationship between account holders and registry administrators.

#### The account holder and authorised representative's obligations

2. The account holder and authorised representative's obligations with respect to security, usernames and passwords, and access to the registry website.
3. The account holder and authorised representative's obligation to post data on the registry website and ensure that data posted is accurate.
4. The account holder and authorised representative's obligation to comply with the terms of use of the registry website.

#### The registry administrator's obligations

5. The registry administrator's obligation to carry out account holder's instructions.
6. The registry administrator's obligation to log the account holder's details.
7. The registry administrator's obligation to create, update or close the account in accordance with the provisions of the Regulation.

#### Process procedures

8. The process finalisation and confirmation provisions.

#### Payment

9. The terms and conditions regarding any registry fees for establishing and maintaining accounts.

#### Operation of the registry website

10. Provisions regarding the right of the registry administrator to make changes to the registry website.
11. Conditions of use of the registry website.

#### Warranties and indemnities

12. Accuracy of information.
13. Authority to initiate processes.

#### Modification of these core terms to reflect changes to this Regulation or changes to domestic legislation

#### Security and response to security breaches

#### Dispute resolution

14. Provisions relating to disputes between account holders.

#### Liability

15. The limit of liability for the registry administrator.
16. The limit of liability for the account holder.

#### Third party rights

#### Agency, notices and governing law





## ANNEX VI

### Definitions of identification codes

#### Introduction

1. This Annex prescribes the elements of the following identification codes:
  - (a) unit identification code;
  - (b) account identification code;
  - (c) permit identification code;
  - (d) account holder identification code;
  - (e) installation identification code;
  - (f) correlation identification code;
  - (g) transaction identification code;
  - (h) reconciliation identification code;
  - (i) project identification code.

The version of the ISO3166 codes shall be as set out in the functional and technical specifications for data exchange standards for registry systems under the Kyoto Protocol, elaborated pursuant to Decision 24/CP.8 of the Conference of the Parties to the UNFCCC.

#### Display and reporting of identification codes

2. For the purpose of displaying and reporting the identification codes set out in this Annex, each element of an identification code shall be separated by a dash '-' and without spaces. Leading zeros in numeric values shall not be displayed. The separating dash '-' shall not be stored in the elements of the identification code.

#### Unit identification code

3. Table VI-1 details the elements of the unit identification code. Each Kyoto unit and allowance shall be assigned a unit identification code. Unit identification codes shall be generated by registries and shall be unique throughout the registries system.
4. A set of units shall be transmitted as a unit block defined by the starting block identifier and the ending block identifier. Every unit of a unit block shall be identical, except for their unique identifier element. Every unique identifier element of the units of a unit block shall be consecutive. When necessary to perform a transaction, keep track of, record or otherwise characterise a unit or unit block, registries or transaction logs shall create multiple unit blocks from a single unit block. When transmitting a single unit, the starting block identifier and ending block identifier shall be equal.
5. Multiple unit blocks shall not overlap with respect to their identifier element. Multiple unit blocks in the same message shall appear in the message in ascending order of their starting block identifier.

**Table VI-1: Unit Identification Code**

| Element              | Display Order | Identifier Required for the Following Unit Types | Data Type | Length | Range or Codes   |
|----------------------|---------------|--|-----------|--------|--|
| Originating Registry | 1             | AAU, RMU, CER, ERU                               | A         | 3      | ISO3166 (2 letter code), 'EU' for the Community registry                 |
| Unit Type            | 2             | AAU, RMU, CER, ERU                               | N         | 2      | 0 = not a Kyoto unit<br>1 = AAU<br>2 = RMU<br>3 = ERU converted from AAU |

▼B

| Element                      | Display Order | Identifier Required for the Following Unit Types | Data Type | Length | Range or Codes  |
|------------------------------|---------------|--|-----------|--------|---|
|                              |               |  |           |        | 4 = ERU converted from RMU<br>5 = CER (not ICER or tCER)<br>6 = tCER<br>7 = ICER  |
| Supplementary Unit Type      | 3             | AAU, RMU, CER, ERU                               | N         | 2      | Blank for Kyoto units<br><br>1 = Allowance issued for the 2008-2012 period and subsequent five-year periods<br><br>2 = Allowance issued for the 2005-2007 period<br><br>3 = Force-majeure allowance<br>► <b>M1</b> 4 = Allowance issued for the 2008 to 2012 and subsequent five-year periods by a Member State that does not have AAUs ◀ |
| Unit Serial Block Start      | 4             | AAU, RMU, CER, ERU                               | N         | 15     | Unique numeric values assigned by registry from 1 – 999 999 999 999 999   |
| Unit Serial Block End        | 5             | AAU, RMU, CER, ERU                               | N         | 15     | Unique numeric values assigned by registry from 1 – 999 999 999 999 999   |
| Original Commitment Period   | 6             | AAU, RMU, CER, ERU                               | N         | 2      | 0 = 2005-2007<br>1 = 2008-2012<br>...<br>99   |
| Applicable Commitment Period | 7             | AAU, CER, ERU                                    | N         | 2      | 0 = 2005-2007<br>1 = 2008-2012<br>...<br>99   |
| LULUCF Activity              | 8             | RMU, CER, ERU                                    | N         | 3      | 1 = Afforestation and reforestation<br><br>2 = Deforestation<br><br>3 = Forest management<br><br>4 = Cropland management<br><br>5 = Grazing land management<br><br>6 = Re-vegetation  |
| Project Identifier           | 9             | CER, ERU   | N         | 7      | Unique numeric value assigned for project   |
| Track                        | 10            | ERU  | N         | 2      | 1 or 2  |
| Expiry Date                  | 11            | ICER, tCER                                       | Date      |        | Expiration date for ICERs or tCERs  |

6. Table VI-2 lists the valid initial unit type and supplementary unit type combinations. An allowance shall have a supplementary unit type regardless

**▼B**

of the period for which it was issued and whether it has been converted from an AAU or other Kyoto unit. An AAU or other Kyoto unit that has not been converted into an allowance shall not have a supplementary unit type. On conversion of an AAU into an allowance in accordance with the provisions of this Regulation the supplementary unit type shall be set to 1. On conversion of an allowance into an AAU in accordance with the provisions of this Regulation there shall be no supplementary unit type.

**Table VI-2: Valid Initial Unit Type — Supplementary Unit Type**

| Initial Unit Type | Supplementary Unit Type | Description  |
|-------------------|-------------------------|--|
| 1                 | [not applicable]        | AAU  |
| 2                 | [not applicable]        | RMU  |
| 3                 | [not applicable]        | ERU converted from AAU   |
| 4                 | [not applicable]        | ERU converted from RMU   |
| 5                 | [not applicable]        | CER (not tCER or ICER)   |
| 6                 | [not applicable]        | tCER   |
| 7                 | [not applicable]        | ICER   |
| 1                 | 1                       | Allowance issued for the 2008-2012 period and subsequent 5-year periods and is converted from an AAU   |
| 0                 | 2                       | Allowance issued for the 2005-2007 period and not converted from an AAU or other Kyoto unit  |
| 0                 | 3                       | Force-majeure allowance  |
| 0                 | 4                       | Allowance issued for the 2008 to 2012 and subsequent five-year periods by a Member State that does not have AAUs, and which is not converted from an AAU or other Kyoto unit |

**▼M1****▼B****Account identification code**

- Table VI-3 details the elements of the account identification code. Each account shall be assigned an account identification code. Account identification codes shall be generated by registries and shall be unique throughout the registries system. Account identification codes of accounts that were previously closed shall not be re-used.
- An operator holding account identification code shall be linked to one installation. An installation shall be linked to one operator holding account identification code. Holding accounts referred to in Article 11(1) and (2) shall not have an applicable commitment period, regardless of the account type.

**Table VI-3: Account Identification Code**

| Element              | Display Order | Data Type | Length | Range or Codes   |
|----------------------|---------------|-----------|--------|--|
| Originating Registry | 1             | A         | 3      | ISO3166 (2 letter code), 'CDM' for the CDM registry, 'EU' for the Community registry   |
| Account Type         | 2             | N         | 3      | 100 = Party holding account<br>120 = operator holding account<br>121 = person holding account<br><br>The remaining account types are as set out in the functional and technical specifications for data exchange standards for registry systems under the Kyoto Protocol, elaborated pursuant to Decision 24/CP.8 of the Conference of the Parties to the UNFCCC |
| Account Identifier   | 3             | N         | 15     | Unique numeric values assigned by a registry from 1 to 999 999 999 999 999   |

**▼ B**

| Element                      | Display Order | Data Type | Length | Range or Codes   |
|------------------------------|---------------|-----------|--------|--|
|                              |               |           |        | ► <b>M1</b> The Central Administrator shall define a separate sub-range of these values for the Community registry and each registry operated in a consolidated manner with the Community registry ◀ |
| Applicable Commitment Period | 4             | N         | 2      | 0 for holding accounts<br>0-99 for retirement and cancellation accounts  |

**▼ M2**

- 8a. By 1 January 2010 at the latest, the registry administrator shall define the last two digits of the account identifier in the form of a unique account number validation figure which is the result of a logical function applied to the preceding numbers in the account identifier.

**▼ B****Permit identification code**

9. Table VI-4 details the elements of the permit identification code. Each permit shall be assigned a permit identification code. Permit identification codes shall be generated by the competent authority and shall be unique throughout the registries system.
10. A permit identification code shall be assigned to one operator. An operator shall be assigned at least one permit identification code. A permit identification code shall be assigned to at least one installation. An installation shall have one permit identification code at any single point in time.

**Table VI-4: Permit Identification Code**

| Element              | Display Order | Data Type | Length | Range or Codes   |
|----------------------|---------------|-----------|--------|--|
| Originating Registry | 1             | A         | 3      | ISO3166 (2 letter code), 'EU' for the Community registry |
| Permit Identifier    | 2             | A         | 50     | ([(0-9) [A-Z] ['-']) +                                   |

**Account holder identification code**

11. Table VI-5 details the elements of the account holder identification code. Each account holder shall be assigned an account holder identification code. Account holder identification codes shall be generated by registries and shall be unique throughout the registries system. Account holder identification codes shall not be re-used for another account holder and shall not change for an account holder throughout their existence.

**Table VI-5: Account Holder Identification Code**

| Element                                 | Display Order | Data Type | Length | Range or Codes   |
|---|---------------|-----------|--------|--|
| Originating Registry                    | 1             | A         | 3      | ISO3166 (2 letter code), 'EU' for the Community registry |
| ► <b>M1</b> Account Holder Identifier ◀ | 2             | A         | 50     | ([(0-9) [A-Z]) +   |

**Installation identification code**

12. Table VI-6 details the elements of the installation identification code. Each installation shall be assigned an installation identification code. Installation identification codes shall be generated by registries and shall be unique throughout the registries system. The installation identifier shall be an integer assigned as an increasing monotone sequence, starting from 1. Installation identifiers shall not contain gaps. Therefore when generating installation identifier n, a registry shall have generated every identifier in the range 1 to n-1. An installation identification code shall not be re-used for another installation and shall not change for an installation throughout its existence.

**▼B**

13. An installation identification code shall be assigned to one installation. An installation shall be assigned one installation identification code.

**Table VI-6: Installation Identification Code**

| Element                 | Display Order | Data Type | Length | Range or Codes   |
|-------------------------|---------------|-----------|--------|--|
| Originating Registry    | 1             | A         | 3      | ISO3166 (2 letter code), 'EU' for the Community registry                   |
| Installation Identifier | 2             | N         | 15     | Unique numeric values assigned by a registry from 1 to 999 999 999 999 999 |

**Correlation identification code****▼M1**

14. Table VI-7 details the elements of the correlation identification codes. Each process referred to in Annex VIII and Annex XIa shall be assigned a correlation identification code. Correlation identification codes shall be generated by registries and shall be unique throughout the registries system. Correlation identification codes shall not be re-used. The re-submission of a process concerning an account or verified emissions that was previously terminated or cancelled shall be assigned a new, unique correlation identification code.

**▼B****Table VI-7: Correlation Identification Code**

| Element                | Display Order | Data Type | Length | Range or Codes   |
|------------------------|---------------|-----------|--------|--|
| Originating Registry   | 1             | A         | 3      | ISO3166 (2 letter code), 'EU' for the Community registry                   |
| Correlation Identifier | 2             | N         | 15     | Unique numeric values assigned by a registry from 1 to 999 999 999 999 999 |

**Transaction identification code**

15. Each process under Annex IX shall be assigned a transaction identification code. Transaction identification codes shall be generated by registries and shall be unique throughout the registries system. Transaction identification codes shall not be re-used. The re-submission of a process concerning a transaction that was previously terminated or cancelled shall be assigned a new, unique transaction identification code.
16. The elements of the transaction identification codes are set out in the functional and technical specifications for data exchange standards for registry systems under the Kyoto Protocol, elaborated pursuant to Decision 24/CP.8 of the Conference of the Parties to the UNFCCC.

**Reconciliation identification code**

17. Each process under Annex X shall be assigned a reconciliation identification code. Prior to the communication link between the Community independent transaction log and UNFCCC independent transaction log being established, the Community independent transaction log shall generate the reconciliation identification code when requesting reconciliation information from registries for a specified time and date. Thereafter, registries shall receive the reconciliation identification code from the UNFCCC independent transaction log. The reconciliation identification code shall be unique throughout the registries system, and all messages exchanged through all stages of a reconciliation process for a specified time and date shall use the same reconciliation identification code.
18. The elements of the reconciliation identification codes are set out in the functional and technical specifications for data exchange standards for registry systems under the Kyoto Protocol, elaborated pursuant to Decision 24/CP.8 of the Conference of the Parties to the UNFCCC.

**Project identification code**

19. Each project shall be assigned a project identification code. Project identification codes shall be generated by the executive board of the CDM for CERs and by the relevant body of the Party or the Article 6 supervisory committee in accordance with Decision 16/CP.7 of the Conference of the Parties to the UNFCCC for ERUs and shall be unique throughout the registries system.

**▼B**

20. The elements of the project identification codes are set out in the functional and technical specifications for data exchange standards for registry systems under the Kyoto Protocol, elaborated pursuant to Decision 24/CP.8 of the Conference of the Parties to the UNFCCC.



## ANNEX VII

## List of input codes

## Introduction

1. This Annex defines the codes for all elements and code support tables. The version of the ISO3166 codes shall be as set out in the functional and technical specifications for data exchange standards for registry systems under the Kyoto Protocol, elaborated pursuant to Decision 24/CP.8 of the Conference of the Parties to the UNFCCC.

## EU-specific codes

2. Field Name: *Activity Type*

Field Description: Numeric code indicating the activity type of an installation

| Code | Description  |
|------|--|
| 1    | Combustion installations with a rated thermal input exceeding 20 MW  |
| 2    | Mineral oil refineries   |
| 3    | Coke ovens   |
| 4    | Metal ore (including sulphide ore) roasting or sintering installations   |
| 5    | Installations for the production of pig iron or steel (primary or secondary fusion) including continuous casting                                       |
| 6    | Installations for the production of cement clinker in rotary kilns or lime in rotary kilns or in other furnaces  |
| 7    | Installations for the manufacture of glass including glass fibre   |
| 8    | Installations for the manufacture of ceramic products by firing, in particular roofing tiles, bricks, refractory bricks, tiles, stoneware or porcelain |
| 9    | Industrial plants for the production of (a) pulp from timber or other fibrous materials (b) paper and board  |
| 99   | Other activity opted-in pursuant to Article 24 of Directive 2003/87/EC   |

3. Field Name: *Relationship Type*

Field Description: Numeric code indicating the type of relationship between an account and a person or operator

| Code | Description  |
|------|--|
| 1    | Account holder   |
| 2    | Primary authorised representative of the account holder    |
| 3    | Secondary authorised representative of the account holder  |
| 4    | Additional authorised representative of the account holder |
| 5    | Authorised representative of the verifier                  |
| 6    | Contact person for the installation                        |

4. Field Name: *Process Type*

Field Description: Numeric code indicating the process type of a transaction

| Code  | Description                         |
|-------|-------------------------------------|
| 01-00 | Issue of AAUs and RMUs              |
| 02-00 | Conversion of AAUs and RMUs to ERUs |

**▼B**

| Code  | Description                           |
|-------|---------------------------------------|
| 03-00 | External transfer (2008-2012 onwards) |
| 04-00 | Cancellation (2008-2012 onwards)      |

**▼M1****▼B**

|       |   |
|-------|---|
| 06-00 | Cancellation and replacement of tCERs and ICERs   |
| 07-00 | Carry-over of Kyoto units and allowances issued for the 2008-2012 period and subsequent five-year periods |
| 08-00 | Change of expiry date of tCERs and ICERs  |
| 10-00 | Internal transfer   |
| 01-51 | Allowance issue (2005-2007)   |
| 10-52 | Allowance issue (2008-2012 onwards)   |
| 10-53 | Allowance allocation  |
| 01-54 | Force-majeure allowance issue   |
| 10-55 | Correction to allowances  |
| 03-21 | External transfer (2005-2007)   |
| 10-01 | Allowance cancellation (2005-2007)  |
| 10-02 | Allowance surrender   |
| 04-03 | Retirement (2005-2007)  |
| 10-41 | Cancellation and replacement  |

**▼M1**

|       |  |
|-------|--|
| 10-61 | conversion of surrendered allowances for retirement(2008 to 2012 onwards)            |
| 10-62 | conversion of unallocated allowances for retirement (2008 to 2012 onwards)           |
| 05-00 | retirement of Kyoto units (2008 to 2012 onwards)                                     |
| 05-01 | retirement of surrendered allowances (2008 to 2012 onwards)                          |
| 05-02 | retirement of unallocated allowances (2008 to 2012 onwards)                          |
| 01-22 | Allowance issue (registries referred to in Article 63a)                              |
| 03-00 | External transfer (between a registry referred to in Article 63a and other registry) |
| 10-22 | Transfer between two registries referred to in Article 63a                           |
| 05-22 | retirement (registries referred to in Article 63a)                                   |

**▼B**5. Field Name: *Supplementary Unit Type*

Field Description: Numeric code indicating the supplementary type of a unit

| Code | Description   |
|------|---|
| 0    | No supplementary unit type  |
| 1    | Allowance issued for the 2008-2012 period and subsequent five-year periods and is converted from an AAU |
| 2    | Allowance issued for the 2005-2007 period and not converted from an AAU or other Kyoto unit             |



**▼B**

| Code | Description             |
|------|-------------------------|
| 3    | Force-majeure allowance |

**▼M1**

|   |  |
|---|--|
| 4 | Allowance issued for the 2008 to 2012 and subsequent five-year periods by a Member State that does not have AAUs, and which is not converted from an AAU or other Kyoto unit |
|---|--|

**▼B**6. Field Name: *Action Code*

Field Description: Numeric code indicating the action in the account update process

| Code | Description                               |
|------|---|
| 1    | Add people to the account or installation |
| 2    | Update people                             |
| 3    | Delete people                             |

**UNFCCC codes**

7. The UNFCCC codes are set out in the functional and technical specifications for data exchange standards for registry systems under the Kyoto Protocol, elaborated pursuant to Decision 24/CP.8 of the Conference of the Parties to the UNFCCC.

▼ B

ANNEX VIII

Processes concerning accounts and verified emissions with response codes

Requirements for each process

1. The following message sequence for processes concerning an account or verified emissions shall apply:
  - (a) the authorised representative of an account shall submit a request to the registry administrator of that registry;
  - (b) the registry administrator shall assign a unique correlation identification code comprising the elements set out in Annex VI to the request;

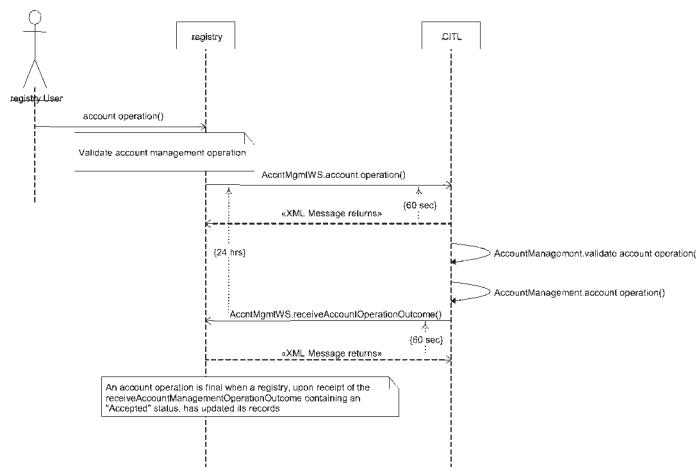
▼ M1

- (c) provided that these processes are completed through the exchange of data via the UNFCCC independent transaction log and thereon to the Community independent transaction log, the registry administrator shall call the appropriate operation on the UNFCCC independent transaction log account management Web service. In all other cases the registry administrator shall call the appropriate operation on the Community independent transaction log account management Web service;

▼ B

- (d) the Community independent transaction log shall validate the request by calling the appropriate validation function within the Community independent transaction log;
- (e) if the request is successfully validated and thereby accepted, the Community independent transaction log shall amend the information it holds in accordance with that request;
- (f) the Community independent transaction log shall call the 'receiveAccountOperationOutcome' operation on the account management Web service of the registry which sent the request, notifying the registry as to whether the request was successfully validated and thereby accepted, or whether the request was found to contain a discrepancy and was thereby rejected;
- (g) if the request was successfully validated and thereby accepted, the registry administrator which sent the request shall amend the information held in the registry in accordance with that validated request; otherwise, if the request was found to contain a discrepancy and was thereby rejected, the registry administrator which sent the request shall not amend the information held in the registry in accordance with that rejected request.

Table VIII-1: Message Sequence Diagram for Processes concerning an Account or Verified Emissions



▼ M1

2. Provided that these are completed through the exchange of data via the Community independent transaction log and thereon to the UNFCCC independent transaction log, a registry administrator sending a request should receive an acknowledgement of receipt from the UNFCCC independent

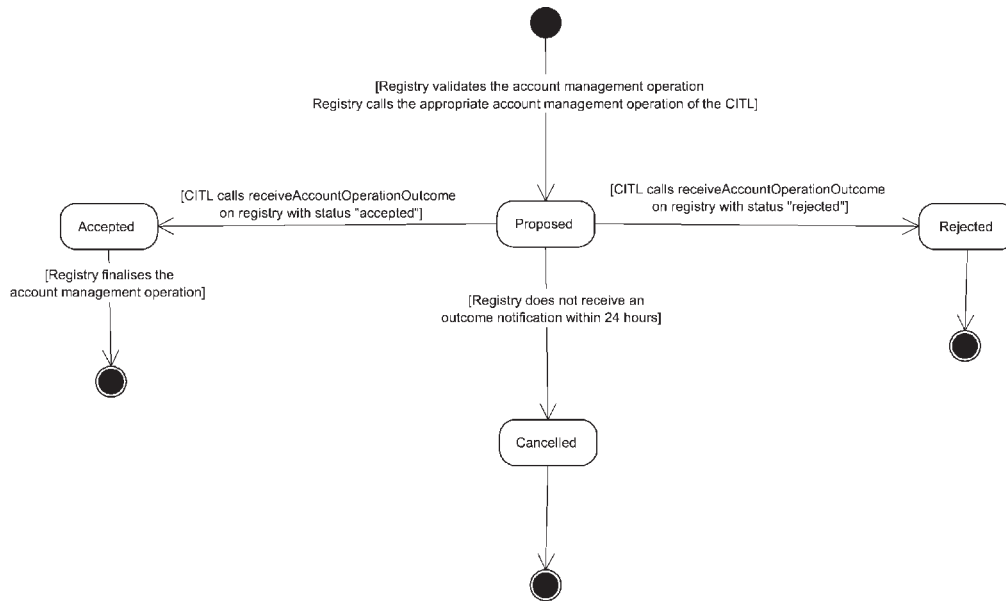
▼ **M1**

transaction log within 60 seconds, and should receive a notification of validation from the Community independent transaction log within 24 hours. In any other case, a registry administrator sending a request should receive an acknowledgement of receipt from the Community independent transaction log within 60 seconds, and should receive a notification of validation from the Community independent transaction log within 24 hours.

▼ **B**

3. The status of the process during the message sequence shall be as follows:

**Table VIII-2: Status Diagram for Processes concerning an Account or Verified Emissions**



4. The components and functions which are utilised during the message sequence are shown in table VIII-3 to VIII-18. Functions which are public shall be implemented as specified. Functions which are Private are for informational purposes only. The inputs of all functions have been structured to match the format and informational requirements described using web services description language, set out in the functional and technical specifications for data exchange standards for registry systems under the Kyoto Protocol, elaborated pursuant to Decision 24/CP.8 of the Conference of the Parties to the UNFCCC. An asterisk ‘(\*)’ has been used to denote the fact that an element can appear multiple times as an input.

**Table VIII-3: Components and Functions for Processes concerning an Account or Verified Emissions**

| Component       | Function                         | Scope  |
|-----------------|----------------------------------|--------|
| MgmtOfAccountWS | CreateAccount()                  | Public |
|                 | UpdateAccount()                  | Public |
|                 | CloseAccount()                   | Public |
|                 | UpdateVerifiedEmissions()        | Public |
|                 | ReceiveAccountOperationOutcome() | Public |



| Component         | Function                          | Scope   |
|-------------------|-----------------------------------|---------|
| AccountManagement | ValidateAccountCreation()         | Private |
|                   | CreateAccount()                   | Private |
|                   | ValidateAccountUpdate()           | Private |
|                   | UpdateAccount()                   | Private |
|                   | ValidateAccountClosure()          | Private |
|                   | CloseAccount()                    | Private |
|                   | ValidateVerifiedEmissionsUpdate() | Private |
|                   | UpdateVerifiedEmissions()         | Private |
| DataValidation    | AuthenticateMessage()             | Private |
|                   | CheckVersion()                    | Private |
|                   | DataFormatChecks()                | Private |

**Table VIII-4: MgmtOfAccountWS Component**

| <b>Purpose</b>  |  |
|---|--|
| The purpose of this component is to handle web service requests for the management of accounts and verified emissions.        |  |
| <b>Functions exposed through Web Services</b>   |  |
| CreateAccount()   | Handles the account creation requests  |
| UpdateAccount()   | Handles the account update requests  |
| CloseAccount()  | Handles account closure requests   |
| UpdateVerifiedEmissions()   | Handles verified emissions update requests   |
| ReceiveAccountOperationOutcome()  | Receives an account operation (creation, update, ...) outcome ('accepted' or 'rejected') |
| <b>Other functions</b>  |  |
| Not applicable.   |  |
| <b>Roles</b>  |  |
| Community independent transaction log (for all functions) and registry (for the ReceiveAccountOperationOutcome function only) |  |

**Table VIII-5: MgmtOfAccountWS.CreateAccount() function**

| <b>Purpose</b>   |
|--|
| This function receives an account creation request.  |
| The Community independent transaction log authenticates the initiating registry (Originating Registry) by calling the AuthenticateMessage() function and checks the version of the initiating registry by calling CheckVersion() function. |
| If authentication and version checks pass, a '1' result identifier is returned without any response codes, the contents of the request are written to a file by calling the WriteToFile() function and the request is put in a queue.      |
| If authentication or version checks fail, a '0' result identifier is returned together with a single response code indicating the error cause.   |
| If the person (People) is not a natural person its name must be put in the LastName parameter.   |
| The 'PersonIdentifier' means the account holder identification code comprising the elements set out in Annex VI.   |

**▼ B**

The 'IdentifierInRegistry' means the alphanumeric identifier for the account as specified by the account holder pursuant to Annexes III and IV.

**Input parameters**

|                            |           |
|----------------------------|-----------|
| From                       | Mandatory |
| To                         | Mandatory |
| CorrelationId              | Mandatory |
| MajorVersion               | Mandatory |
| MinorVersion               | Mandatory |
| <i>Account</i> (*)         | Mandatory |
| AccountType                | Mandatory |
| AccountIdentifier          | Mandatory |
| IdentifierInReg            | Mandatory |
| CommitmentPeriod           | Optional  |
| <i>Installation</i>        | Optional  |
| InstallationIdentifier     | Mandatory |
| PermitIdentifier           | Mandatory |
| Name                       | Mandatory |
| MainActivityType           | Mandatory |
| Country                    | Mandatory |
| PostalCode                 | Mandatory |
| City                       | Mandatory |
| Address1                   | Mandatory |
| Address2                   | Optional  |
| ParentCompany              | Optional  |
| SubsidiaryCompany          | Optional  |
| EPERIdentification         | Optional  |
| Latitude                   | Optional  |
| Longitude                  | Optional  |
| ContactPeople (see People) | Mandatory |
| <i>People</i> (*)          | Mandatory |
| RelationshipCode           | Mandatory |
| PersonIdentifier           | Mandatory |
| FirstName                  | Optional  |

**▼B**

|              |           |
|--------------|-----------|
| LastName     | Mandatory |
| Country      | Mandatory |
| PostalCode   | Mandatory |
| City         | Mandatory |
| Address1     | Mandatory |
| Address2     | Optional  |
| PhoneNumber1 | Mandatory |
| PhoneNumber2 | Mandatory |

**▼M1**

|           |          |
|-----------|----------|
| FaxNumber | Optional |
|-----------|----------|

**▼B**

|       |           |
|-------|-----------|
| Email | Mandatory |
|-------|-----------|

**Output parameters**

|                   |           |
|-------------------|-----------|
| Result Identifier | Mandatory |
| Response Code     | Optional  |

**Uses**

- AuthenticateMessage
- WriteToFile
- CheckVersion

**Used By**

Not applicable (called as a web service).

**Table VIII-6: MgmtOfAccountWS.UpdateAccount() function****Purpose**

This function receives an account update request.

The Community independent transaction log authenticates the initiating registry (Originating Registry) by calling the AuthenticateMessage() function and checks the version of the initiating registry by calling CheckVersion() function.

If authentication and version checks pass, a '1' result identifier is returned without any response codes, the contents of the request are written to a file by calling the WriteToFile() function and the request is put in a queue.

If authentication or version checks fail, a '0' result identifier is returned together with a single response code indicating the error cause.

If the person (People) is not a natural person its name must be put in the LastName parameter.

The 'PersonIdentifier' means the account holder identification code comprising the elements set out in Annex VI.

The 'IdentifierInRegistry' means the alphanumeric identifier for the account as specified by the account holder pursuant to Annexes III and IV.

**Input parameters**

|      |           |
|------|-----------|
| From | Mandatory |
| To   | Mandatory |

▼ **B**

|                            |           |
|----------------------------|-----------|
| CorrelationId              | Mandatory |
| MajorVersion               | Mandatory |
| MinorVersion               | Mandatory |
| <i>Account</i> (*)         | Mandatory |
| AccountIdentifier          | Mandatory |
| IdentifierInReg            | Optional  |
| <i>Installation</i>        | Optional  |
| PermitIdentifier           | Optional  |
| Name                       | Optional  |
| MainActivityType           | Optional  |
| Country                    | Optional  |
| PostalCode                 | Optional  |
| City                       | Optional  |
| Address1                   | Optional  |
| Address2                   | Optional  |
| ParentCompany              | Optional  |
| SubsidiaryCompany          | Optional  |
| EPERIdentification         | Optional  |
| Latitude                   | Optional  |
| Longitude                  | Optional  |
| ContactPeople (see People) | Optional  |
| <i>People</i> (*)          | Optional  |
| Action                     | Mandatory |
| RelationshipCode           | Mandatory |
| PersonIdentifier           | Mandatory |
| FirstName                  | Optional  |
| LastName                   | Optional  |
| Country                    | Optional  |
| PostalCode                 | Optional  |
| City                       | Optional  |
| Address1                   | Optional  |
| Address2                   | Optional  |
| PhoneNumber1               | Optional  |
| PhoneNumber2               | Optional  |
| FaxNumber                  | Optional  |
| Email                      | Optional  |
| <b>Output parameters</b>   |           |
| Result Identifier          | Mandatory |

**▼B**

|   |          |
|---|----------|
| Response Code                             | Optional |
| <b>Uses</b>                               |          |
| — AuthenticateMessage                     |          |
| — WriteToFile                             |          |
| — CheckVersion                            |          |
| <b>Used By</b>                            |          |
| Not applicable (called as a web service). |          |

**Table VIII-7: MgmtOfAccountWS.CloseAccount() function**

|  |           |
|--|-----------|
| <b>Purpose</b>   |           |
| This function receives an account closure request.   |           |
| The Community independent transaction log authenticates the initiating registry (Originating Registry) by calling the AuthenticateMessage() function and checks the version of the initiating registry by calling CheckVersion() function. |           |
| If authentication and version checks pass, a '1' result identifier is returned without any response codes, the contents of the request are written to a file by calling the WriteToFile() function and the request is put in a queue.      |           |
| If authentication or version checks fail, a '0' result identifier is returned together with a single response code indicating the error cause.   |           |
| <b>Input parameters</b>  |           |
| From   | Mandatory |
| To   | Mandatory |
| CorrelationId  | Mandatory |
| MajorVersion   | Mandatory |
| MinorVersion   | Mandatory |
| Account (*)  | Mandatory |
| AccountIdentifier  | Mandatory |
| <b>Output parameters</b>   |           |
| Result Identifier  | Mandatory |
| Response Code  | Optional  |
| <b>Uses</b>  |           |
| — AuthenticateMessage  |           |
| — WriteToFile  |           |
| — CheckVersion   |           |
| <b>Used By</b>   |           |
| Not applicable (called as a web service).  |           |

**Table VIII-8: MgmtOfAccountWS.UpdateVerifiedEmissions() function**

|  |  |
|--|--|
| <b>Purpose</b>   |  |
| This function receives a verified emissions update request.            |  |
| The Community independent transaction log authenticates the initiating |  |



**▼ B**

registry (Originating Registry) by calling the AuthenticateMessage() function and checks the version of the initiating registry by calling CheckVersion() function.

If authentication and version checks pass, a '1' result identifier is returned without any response codes, the contents of the request are written to a file by calling the WriteToFile() function and the request is put in a queue.

If authentication or version checks fail, a '0' result identifier is returned together with a single response code indicating the error cause.

---

**Input parameters**


---

|                        |           |
|------------------------|-----------|
| From                   | Mandatory |
| To                     | Mandatory |
| CorrelationId          | Mandatory |
| MajorVersion           | Mandatory |
| MinorVersion           | Mandatory |
| VerifiedEmissions (*)  | Mandatory |
| Year                   | Mandatory |
| Installations (*)      | Mandatory |
| InstallationIdentifier | Mandatory |
| VerifiedEmission       | Mandatory |

---

**Output parameters**


---

|                   |           |
|-------------------|-----------|
| Result Identifier | Mandatory |
| Response Code     | Optional  |

---

**Uses**


---

- AuthenticateMessage
- WriteToFile
- CheckVersion

---

**Used By**


---

Not applicable (called as a web service).

**Table VIII-9: MgmtOfAccountWS.ReceiveAccountOperationOutcome() function**

---

**Purpose**


---

This function receives an account management operation outcome.

► **M1** The initiating registry (Originating Registry) authenticates the UNFCCC independent transaction log (or Community independent transaction log if all processes referred to in Annex VIII are completed through the exchange of data via the Community independent transaction log) by calling the Authenticate Message() function and checks the version of the transaction log by calling Check Version() function. ◀

If authentication and version checks pass, a '1' result identifier is returned without any response codes, the contents of the request are written to a file by calling the WriteToFile() function and the request is put in a queue.

If authentication or version checks fail, a '0' result identifier is returned together with a single response code indicating the error cause.

The response code list is populated with couples (the account or installation

**▼ B**

identifier with an adjoining response code) if the outcome is '0' for any other cause of error.

| <b>Input parameters</b> |           |
|-------------------------|-----------|
| From                    | Mandatory |
| To                      | Mandatory |
| CorrelationId           | Mandatory |
| MajorVersion            | Mandatory |
| MinorVersion            | Mandatory |
| Outcome                 | Mandatory |
| Response List           | Optional  |

| <b>Output parameters</b> |           |
|--------------------------|-----------|
| Result Identifier        | Mandatory |
| Response Code            | Optional  |

| <b>Uses</b>           |  |
|-----------------------|--|
| — AuthenticateMessage |  |
| — WriteToFile         |  |
| — CheckVersion        |  |

| <b>Used By</b>                            |  |
|---|--|
| Not applicable (called as a web service). |  |

**Table VIII-10: AccountManagement Component**

| <b>Purpose</b>   |  |
|--|--|
| The purpose of this component is to provide the validating and update functions for the management of accounts and verified emissions. |  |

| <b>Functions exposed through Web Services</b> |  |
|---|--|
| Not applicable.                               |  |

| <b>Other functions</b>            |  |
|-----------------------------------|--|
| ValidateAccountCreation()         | Validates an account creation                |
| ValidateAccountUpdate()           | Validates an account update                  |
| ValidateAccountClosure()          | Validates an account closure                 |
| ValidateVerifiedEmissionsUpdate() | Validates a verified emissions update        |
| CreateAccount()                   | Creates accounts                             |
| UpdateAccount()                   | Updates accounts                             |
| CloseAccount()                    | Closes accounts                              |
| UpdateVerifiedEmissions()         | Updates verified emissions for installations |

| <b>Roles</b>  |  |
|---|--|
| Transaction log (all functions), registry (for information only). |  |



**Table VIII-11: ManagementOfAccount.ValidateAccountCreation() function**

| <b>Purpose</b>  |           |
|---|-----------|
| This function validates an account creation request.  |           |
| If a validation test fails, the account identifier and response code are added to the response code list. |           |
| <b>Input parameters</b>   |           |
| From  | Mandatory |
| To  | Mandatory |
| CorrelationId   | Mandatory |
| MajorVersion  | Mandatory |
| MinorVersion  | Mandatory |
| <i>Account</i> (*)  | Mandatory |
| AccountType   | Mandatory |
| AccountIdentifier   | Mandatory |
| IdentifierInReg   | Mandatory |
| CommitmentPeriod  | Optional  |
| <i>Installation</i>   | Optional  |
| InstallationIdentifier  | Mandatory |
| PermitIdentifier  | Mandatory |
| Name  | Mandatory |
| MainActivityType  | Mandatory |
| Country   | Mandatory |
| PostalCode  | Mandatory |
| City  | Mandatory |
| Address1  | Mandatory |
| Address2  | Optional  |
| ParentCompany   | Optional  |
| SubsidiaryCompany   | Optional  |
| EPERIdentification  | Optional  |
| Latitude  | Optional  |
| Longitude   | Optional  |
| ContactPeople (see People)  | Mandatory |
| <i>People</i> (*)   | Mandatory |
| RelationshipCode  | Mandatory |
| PersonIdentifier  | Mandatory |
| FirstName   | Optional  |
| LastName  | Mandatory |

**▼B**

|              |           |
|--------------|-----------|
| Country      | Mandatory |
| PostalCode   | Mandatory |
| City         | Mandatory |
| Address1     | Mandatory |
| Address2     | Optional  |
| PhoneNumber1 | Mandatory |
| PhoneNumber2 | Optional  |

**▼M1**

|           |           |
|-----------|-----------|
| FaxNumber | Mandatory |
|-----------|-----------|

**▼B**

|       |          |
|-------|----------|
| Email | Optional |
|-------|----------|

**Output parameters**

|                   |           |
|-------------------|-----------|
| Result Identifier | Mandatory |
| Response List     | Optional  |

Messages

Range 7101 to 7110; range 7122 to 7160; ►**M1** 7162 ◀.

**Table VIII-12: ManagementOfAccount.CreateAccount() function**

**Purpose**

This function creates accounts.

For each account:

Create the account and its details.

Create all persons (People) and their details if they did not already exist and link these to the account.

Update all information linked to persons (People) that already existed and that are linked to the account.

Create the installation and installation details if an installation is linked to the account.

Create all persons (People) linked to the installation (the contact person) if they did not already exist.

Update all information linked to persons (People) that already existed and that are linked to the installation.

**Input parameters**

|               |           |
|---------------|-----------|
| From          | Mandatory |
| To            | Mandatory |
| CorrelationId | Mandatory |
| MajorVersion  | Mandatory |
| MinorVersion  | Mandatory |
| Account (*)   | Mandatory |
| AccountType   | Mandatory |

**▼B**

|                        |           |
|------------------------|-----------|
| AccountIdentifier      | Mandatory |
| IdentifierInReg        | Mandatory |
| CommitmentPeriod       | Optional  |
| <i>Installation</i>    | Optional  |
| InstallationIdentifier | Mandatory |
| PermitIdentifier       | Mandatory |

**▼M1**

|            |           |
|------------|-----------|
| PermitDate | Mandatory |
|------------|-----------|

**▼B**

|                            |           |
|----------------------------|-----------|
| Name                       | Mandatory |
| MainActivityType           | Mandatory |
| Country                    | Mandatory |
| PostalCode                 | Mandatory |
| City                       | Mandatory |
| Address1                   | Mandatory |
| Address2                   | Optional  |
| ParentCompany              | Optional  |
| SubsidiaryCompany          | Optional  |
| EPERIdentification         | Optional  |
| Latitude                   | Optional  |
| Longitude                  | Optional  |
| ContactPeople (see People) | Mandatory |
| <i>People</i> (*)          | Mandatory |
| RelationshipCode           | Mandatory |
| PersonIdentifier           | Mandatory |
| FirstName                  | Optional  |
| LastName                   | Mandatory |
| Country                    | Mandatory |
| PostalCode                 | Mandatory |
| City                       | Mandatory |
| Address1                   | Mandatory |
| Address2                   | Optional  |
| PhoneNumber1               | Mandatory |

▼ B

|              |          |
|--------------|----------|
| PhoneNumber2 | Optional |
|--------------|----------|

▼ M1

|           |          |
|-----------|----------|
| FaxNumber | Optional |
|-----------|----------|

▼ B

|       |          |
|-------|----------|
| Email | Optional |
|-------|----------|

**Output parameters**

|                   |           |
|-------------------|-----------|
| Result Identifier | Mandatory |
|-------------------|-----------|

**Uses**

Not applicable.

**Used By**

Not applicable (called as a web service).

**Table VIII-13: AccountManagement.ValidateAccountUpdate() function****Purpose**

This function validates an account update request.

If a validation test fails, the account identifier and response code are added to the response code list.

**Input parameters**

|      |           |
|------|-----------|
| From | Mandatory |
|------|-----------|

|    |           |
|----|-----------|
| To | Mandatory |
|----|-----------|

|               |           |
|---------------|-----------|
| CorrelationId | Mandatory |
|---------------|-----------|

|              |           |
|--------------|-----------|
| MajorVersion | Mandatory |
|--------------|-----------|

|              |           |
|--------------|-----------|
| MinorVersion | Mandatory |
|--------------|-----------|

|                    |           |
|--------------------|-----------|
| <i>Account</i> (*) | Mandatory |
|--------------------|-----------|

|                   |           |
|-------------------|-----------|
| AccountIdentifier | Mandatory |
|-------------------|-----------|

|                 |          |
|-----------------|----------|
| IdentifierInReg | Optional |
|-----------------|----------|

|                     |          |
|---------------------|----------|
| <i>Installation</i> | Optional |
|---------------------|----------|

|                  |          |
|------------------|----------|
| PermitIdentifier | Optional |
|------------------|----------|

▼ M1

|            |          |
|------------|----------|
| PermitDate | Optional |
|------------|----------|

▼ B

|      |          |
|------|----------|
| Name | Optional |
|------|----------|

|                  |          |
|------------------|----------|
| MainActivityType | Optional |
|------------------|----------|

|         |          |
|---------|----------|
| Country | Optional |
|---------|----------|

|            |          |
|------------|----------|
| PostalCode | Optional |
|------------|----------|

|      |          |
|------|----------|
| City | Optional |
|------|----------|

|          |          |
|----------|----------|
| Address1 | Optional |
|----------|----------|

|          |          |
|----------|----------|
| Address2 | Optional |
|----------|----------|

**▼ B**

|                            |           |
|----------------------------|-----------|
| ParentCompany              | Optional  |
| SubsidiaryCompany          | Optional  |
| EPERIdentification         | Optional  |
| Latitude                   | Optional  |
| Longitude                  | Optional  |
| ContactPeople (see People) | Optional  |
| <i>People</i> (*)          | Optional  |
| Action                     | Mandatory |
| RelationshipCode           | Mandatory |
| PersonIdentifier           | Mandatory |
| FirstName                  | Optional  |
| LastName                   | Optional  |
| Country                    | Optional  |
| PostalCode                 | Optional  |
| City                       | Optional  |
| Address1                   | Optional  |
| Address2                   | Optional  |
| PhoneNumber1               | Optional  |
| PhoneNumber2               | Optional  |
| FaxNumber                  | Optional  |
| Email                      | Optional  |

**Output parameters**

|                   |           |
|-------------------|-----------|
| Result Identifier | Mandatory |
| Response List     | Optional  |

**Messages**

Range 7102 to 7107; range 7111 to 7113; 7120; 7122; 7124; range 7126 to 7158.

**Table VIII-14: ManagementOfAccount.UpdateAccount() function****Purpose**

This function updates the details of an account.

If action = 'Add':

For each link to be added:

If the person (People) existed, update its details if required.

If the person (People) did not exist, create the person (People) and link it to the account.

If action = 'Update':

For all persons (People) to update and that are linked to the account, update their details.

If action = 'Delete':

**▼B**

Remove the link between the person (People) and the account (for example, an additional authorised representative is removed).

If an installation is linked to the account, update the installation details if required.

Update the details of the persons (People) linked to the installation if details have been submitted (by using the same 'Add', 'Update' and 'Delete' actions).

| <b>Input parameters</b>    |           |
|----------------------------|-----------|
| From                       | Mandatory |
| To                         | Mandatory |
| CorrelationId              | Mandatory |
| MajorVersion               | Mandatory |
| MinorVersion               | Mandatory |
| <i>Account</i> (*)         | Mandatory |
| AccountType                | Mandatory |
| AccountIdentifier          | Mandatory |
| IdentifierInReg            | Mandatory |
| <i>Installation</i>        | Optional  |
| InstallationIdentifier     | Mandatory |
| PermitIdentifier           | Mandatory |
|                            |           |
| PermitDate                 | Mandatory |
|                            |           |
|                            |           |
| Name                       | Mandatory |
| MainActivityType           | Mandatory |
| Country                    | Mandatory |
| PostalCode                 | Mandatory |
| City                       | Mandatory |
| Address1                   | Mandatory |
| Address2                   | Optional  |
| ParentCompany              | Optional  |
| SubsidiaryCompany          | Optional  |
| EPERIdentification         | Optional  |
| Latitude                   | Optional  |
| Longitude                  | Optional  |
| ContactPeople (see People) | Mandatory |
| <i>People</i> (*)          | Mandatory |
| RelationshipCode           | Mandatory |
| PersonIdentifier           | Mandatory |

**▼M1****▼B**



**▼B**

|              |           |
|--------------|-----------|
| FirstName    | Optional  |
| LastName     | Mandatory |
| Country      | Mandatory |
| PostalCode   | Mandatory |
| City         | Mandatory |
| Address1     | Mandatory |
| Address2     | Optional  |
| PhoneNumber1 | Optional  |
| PhoneNumber2 | Optional  |
| FaxNumber    | Optional  |
| Email        | Optional  |

**Output parameters**

|                   |           |
|-------------------|-----------|
| Result Identifier | Mandatory |
|-------------------|-----------|

**Uses**

Not applicable.

**Used By**

Not applicable (called as a web service).

**Table VIII-15: ManagementOfAccount.ValidateAccountClosure() function**

**Purpose**

This function validates an account closure operation.

If a validation test fails, the account identifier and response code are added to the response code list.

**Input parameters**

|               |           |
|---------------|-----------|
| From          | Mandatory |
| To            | Mandatory |
| CorrelationId | Mandatory |
| MajorVersion  | Mandatory |
| MinorVersion  | Mandatory |
| Account (*)   | Mandatory |

**Purpose**

|                   |           |
|-------------------|-----------|
| AccountIdentifier | Mandatory |
|-------------------|-----------|

**Output parameters**

|                   |           |
|-------------------|-----------|
| Result Identifier | Mandatory |
| Response List     | Optional  |

**Messages**

7111; range 7114 to 7115; 7117; range 7153 to 7156; 7158; ► **MI** 7161. ◀

**▼B****Table VIII-16: ManagementOfAccount.CloseAccount() function**

| <b>Purpose</b>   |           |
|--|-----------|
| This function closes an account or accounts by setting the end validity date of the account(s) to be closed to the current date. |           |
| <b>Input parameters</b>  |           |
| Registry   | Mandatory |
| CorrelationId  | Mandatory |
| MajorVersion   | Mandatory |
| MinorVersion   | Mandatory |
| <i>Account</i> (*)   | Mandatory |
| AccountIdentifier  | Mandatory |
| <b>Output parameters</b>   |           |
| Result Identifier  | Mandatory |

**Table VIII-17: ManagementOfAccount.ValidateVerifiedEmissionsUpdate() function**

| <b>Purpose</b>   |           |
|--|-----------|
| This function validates a verified emissions update.   |           |
| If a validation test fails, the installation identifier and response code are added to the response code list. |           |
| <b>Input parameters</b>  |           |
| From   | Mandatory |
| To   | Mandatory |
| CorrelationId  | Mandatory |
| MajorVersion   | Mandatory |
| MinorVersion   | Mandatory |
| <i>VerifiedEmissions</i> (*)   | Mandatory |
| Year   | Mandatory |
| <i>Installations</i> (*)   | Mandatory |
| InstallationIdentifier   | Mandatory |
| VerifiedEmission   | Mandatory |
| <b>Output parameters</b>   |           |
| Result Identifier  | Mandatory |
| Response List  | Optional  |
| <b>Messages</b>  |           |
| Range 7118 to 7119; range 7152 to 7156; 7159; ► <b>M1</b> 7525. ◀  |           |

**▼B****Table VIII-18: ManagementOfAccount.UpdateVerifiedEmissions function**

| <b>Purpose</b>  |           |
|---|-----------|
| Updates the verified emissions for the year and installation specified. |           |
| <b>Input parameters</b>   |           |
| From  | Mandatory |
| To  | Mandatory |
| CorrelationId   | Mandatory |
| MajorVersion  | Mandatory |
| <i>VerifiedEmissions</i> (*)  | Mandatory |
| Year  | Mandatory |
| <i>Installations</i> (*)  | Mandatory |
| InstallationIdentifier  | Mandatory |
| VerifiedEmission  | Mandatory |
| <b>Output parameters</b>  |           |
| Result Identifier   | Mandatory |

**Preliminary checks for each process**

- The Community independent transaction log shall check the status of a registry for each process concerning an account or verified emissions. If the communication link between the registry and the Community independent transaction log has not been established or is temporarily suspended pursuant to Article 6(3) in respect of the requested process concerning an account or verified emissions, it shall be rejected and the response code 7005 shall be returned.

**▼M1**

- The Community independent transaction log shall perform registry version and registry authentication checks, and message viability checks, on each process concerning an account or verified emissions and return the appropriate response codes if a discrepancy is detected, as set out in Table XII-1 under the range 7900 to 7999. The abovementioned checks are equivalent to the checks related to the response codes that are set out in the functional and technical specifications for data exchange standards for registry systems under the Kyoto Protocol, elaborated pursuant to Decision 24/CP.8 of the Conference of the Parties to the UNFCCC and are reproduced in the last column of Table XII-1 alongside the equivalent response codes under the range 7900 to 7999. If a check under the above mentioned data exchange standards that is equivalent to the checks whose response codes are set out in Table XII-1 under the range 7900 to 7999 or the implementation by the UNFCCC independent transaction log of such a check is changed by the ITL Administrator, the Central Administrator shall disable the equivalent check.

**▼B**

- The Community independent transaction log shall perform data integrity checks on each process concerning an account or verified emissions and return response codes in the range 7122 to 7159 if a discrepancy is detected.

**Secondary checks for each process**

- The Community independent transaction log shall perform secondary checks on each process concerning an account or verified emissions which has passed all of the preliminary checks. The secondary checks, and the adjoining response codes which are returned when a discrepancy is detected, are set out in table VIII-19.

**▼B****Table VIII-19: Secondary Checks**

| Process description       | Community independent transaction log response codes                     |
|---------------------------|--|
| Account creation          | Range 7101 to 7110<br>7160   |
| Account update            | Range 7102 to 7105<br>Range 7107 to 7108<br>7111<br>7113<br>7120<br>7160 |
| Account closure           | 7111<br>Range 7114 to 7115<br>7117                                       |
| Verified emissions update | Range 7118 to 7119   |

**▼B***ANNEX IX***Processes concerning transactions with response codes****Process types**

1. Each process concerning a transaction shall be assigned a process type consisting of an initial process type and a supplementary process type. The initial process type shall describe its category as set out in the functional and technical specifications for data exchange standards for registry systems under the Kyoto Protocol, elaborated pursuant to Decision 24/CP.8 of the Conference of the Parties to the UNFCCC. The supplementary process type shall describe its category as set out in the provisions of this Regulation, elaborated pursuant to Directive 2003/87/EC. The process types are set out in table IX-1.

**Requirements for each process**

2. The message sequence for processes concerning a transaction, the status of the transaction and the status of the Kyoto units or allowances involved in the transaction during the message sequence, and the components and functions which are utilised during the message sequence, are set out in the functional and technical specifications for data exchange standards for registry systems under the Kyoto Protocol, elaborated pursuant to Decision 24/CP.8 of the Conference of the Parties to the UNFCCC.

**Preliminary checks for each process**

3. The Community independent transaction log shall check the status of a registry for each process concerning a transaction. If the communication link between the registry and the Community independent transaction log has not been established or is temporarily suspended pursuant to Article 6(3) in respect of the requested process, it shall be rejected and the response codes 7005 or 7006 shall be returned.

**▼M1**

4. The Community independent transaction log shall perform the following categories of preliminary checks on each process concerning a transaction:
  - (a) registry version and registry authentication checks;
  - (b) message viability checks;
  - (c) data integrity checks;
  - (d) general transaction checks; and
  - (e) message sequence checks.

The Community independent transaction log shall return the appropriate response codes if a discrepancy is detected, as set out in Table XII-1 under the range 7900 to 7999. The above-mentioned checks are equivalent to the checks related to the response codes that are set out in the functional and technical specifications for data exchange standards for registry systems under the Kyoto Protocol, elaborated pursuant to Decision 24/CP.8 of the Conference of the Parties to the UNFCCC and are reproduced in the last column of Table XII-1 alongside the equivalent response codes under the range 7900 to 7999. If a check under the above mentioned data exchange standards is equivalent to the checks whose response codes are set out in Table XII-1 under the range 7900 to 7999 and the implementation by the UNFCCC independent transaction log of such a check is changed by the ITL Administrator, the Central Administrator shall disable the equivalent check.

**▼B****Secondary and tertiary checks for each process**

5. For each process concerning a transaction which has passed all of the preliminary checks, the Community independent transaction log shall perform the following secondary checks to ascertain whether:
  - (a) the Kyoto units or allowances are held in the transferring account (a discrepancy returns response code 7027);
  - (b) the transferring account exists in the specified registry (a discrepancy returns response code 7021);
  - (c) the acquiring account exists in the specified registry (a discrepancy returns response code 7020);

**▼B**

- (d) both accounts exist in the same registry for an internal transfer (a discrepancy returns response code 7022);
- (e) both accounts exist in different registries for an external transfer (a discrepancy returns response code 7023);
- (f) the transferring account is not blocked pursuant to Article 27 (a discrepancy returns response code 7025);
- (g) force majeure allowances are not being transferred (a discrepancy returns response code 7024).
6. The Community independent transaction log shall perform tertiary checks on each process concerning a transaction which has passed all of the preliminary checks. The tertiary checks, and the adjoining response codes which are returned when a discrepancy is found, are set out in table IX-1.

**Table IX-1: Tertiary Checks**

| Process description   | Process type | Community independent transaction log response codes               |
|---|--------------|--|
| Issue of AAUs and RMUs  | 01-00        | [not applicable]   |
| Conversion of AAUs and RMUs to ERUs   | 02-00        | 7218   |
| External transfer (2008-2012 onwards)   | 03-00        | Range 7301 to 7302<br>7304<br>► <b>M1</b> Range 7221 to 7222 ◀     |
| Cancellation (2008-2012 onwards)  | 04-00        | [not applicable]   |
| _____   |              |  |
| _____   |              |  |
| Cancellation and replacement of tCERs and ICERs   | 06-00        | [not applicable]   |
| Carry-over of Kyoto units and allowances issued for the 2008-2012 period and subsequent five-year periods | 07-00        | [not applicable]   |
| Change of expiry date of tCERs and ICERs  | 08-00        | [not applicable]   |
| Internal transfer   | 10-00        | 7304<br>Range 7406 to 7407   |
| Allowance issue (2005-2007)   | 01-51        | Range 7201 to 7203<br>7219   |
| Allowance issue (2008-2012 onwards)   | 10-52        | Range 7201 to 7203<br>7205<br>7219                                 |
| Allowance allocation  | 10-53        | 7202<br>7203<br>Range 7206 to 7208<br>7214<br>7216<br>7304<br>7360 |

**▼M1****▼B**

▼ **B**

| Process description                | Process type | Community independent transaction log response codes   |
|------------------------------------|--------------|--|
| Force-majeure allowance issue      | 01-54        | 7202<br>Range 7210 to 7211<br>7215<br>7217<br>7220   |
| Correction to allowances           | 10-55        | Range 7212 to 7213   |
| External transfer (2005-2007)      | 03-21        | 7302<br>Range 7304 to 7305<br>Range 7406 to 7407<br>► <b>M1</b> Range 7221 to 7222 ◀   |
| Allowance cancellation (2005-2007) | 10-01        | 7212<br>7305   |
| Allowance surrender                | 10-02        | 7202<br>7304<br>Range 7353 to 7356   |
| Retirement (2005-2007)             | 04-03        | 7209<br>7305<br>7357<br>Range 7360 to 7362   |
| Cancellation and replacement       | 10-41        | (2005 to 2007)<br>7205<br>7212<br>7219<br>7360<br>7402<br>7404<br>Range 7406 to 7407<br>(2008-2012 onwards)<br>7202<br>7205<br>7219<br>7360<br>Range 7401 to 7402<br>Range 7404 to 7407<br>► <b>M1</b> (registries referred to in Article 63a)<br>7219<br>Range 7223 to 7224<br>7360 |

▼ B

| Process description | Process type | Community independent transaction log response codes |
|---------------------|--------------|--|
|                     |              | 7402<br>7404<br>7406<br>Range 7407 to 7408<br>7202 ◀ |

▼ M1

|  |       |                                  |
|--|-------|----------------------------------|
| Conversion of surrendered allowances for retirement (2008 to 2012 onwards) | 10-61 | 7358                             |
| Conversion of unallocated allowances for retirement (2008 to 2012 onwards) | 10-62 | 7364, 7366                       |
| Retirement of Kyoto units (2008 to 2012 onwards)                           | 05-00 | 7360<br>7365                     |
| Retirement of surrendered allowances (2008 to 2012 onwards)                | 05-01 | Range 7359 to 7361<br>7365       |
| Retirement of unallocated allowances (2008 to 2012 onwards)                | 05-02 | 7360, 7361<br>Range 7363 to 7365 |

▼ M2

|  |  |  |
|--|--|--|
|  |  |  |
|--|--|--|

▼ M1

|  |       |  |
|--|-------|--|
| Allowance issue (registries referred to in Article 63a)    | 01-22 | Range 7201 to 7203<br>7219<br>7224               |
| Retirement (registries referred to in Article 63a)         | 05-22 | Range 7227 to 7228<br>7357<br>Range 7360 to 7362 |
| Transfer between two registries referred to in Article 63a | 10-22 | 7302, 7304<br>Range 7406 to 7407<br>7224<br>7228 |

▼ M2


---



**▼B***ANNEX X***Reconciliation process with response codes****Requirements for the process**

1. ►**M1** When the communication link between the Community independent transaction log and the UNFCCC independent transaction log is not established, each registry shall respond to any request made by the Community independent transaction log to submit the following information for a specified time and date: ◀
  - (a) the total number of allowances held in each account type in that registry;
  - (b) the unit identification codes of any allowance held in each account type in that registry;
  - (c) the transaction log and audit log history of any allowance held in each account type in that registry;
  - (d) the total number of allowances held in each account in that registry;
  - (e) the unit identification codes of any allowance held in each account in that registry; and
  - (f) the transaction log and audit log history of each allowance held in any account in that registry.
2. ►**M1** When the communication link between the Community independent transaction log and the UNFCCC independent transaction log is established, each registry shall respond to any request made by the UNFCCC independent transaction log to submit the following information for a specified time and date: ◀
  - (a) the total number of allowances, AAUs, RMUs, ERUs, CERs (not tCERs or ICERs), ICERs and tCERs, held in each account type in that registry;
  - (b) the unit identification codes of any allowance, AAU, RMU, ERU, CER (not tCER or ICER), ICER and tCER, held in each account type in that registry; and
  - (c) the transaction log and audit log history of any allowance, AAU, RMU, ERU, CER (not tCER or ICER), ICER and tCER held in each account type in that registry.
3. ►**M1** When the communication link between the Community independent transaction log and the UNFCCC independent transaction log is established, each registry shall respond to any request by the UNFCCC independent transaction log made on behalf of the Community independent transaction log, or by the Community independent transaction log to submit the following information for a specified time and date: ◀
  - (a) the total number of allowances, AAUs, RMUs, ERUs, CERs (not tCERs or ICERs), ICERs and tCERs held in each account in that registry;
  - (b) the unit identification codes of any allowance, AAU, RMU, ERU, CER (not tCER or ICER), ICER and tCER held in each account in that registry; and
  - (c) the transaction log and audit log history of any allowance, AAU, RMU, ERU, CER (not tCER or ICER), ICER and tCER held in each account in that registry.
4. The message sequence for the reconciliation process, the status of the reconciliation process and the status of the Kyoto units or allowances involved in the reconciliation process during the message sequence, and the components and functions which are utilised during the message sequence, are set out in the functional and technical specifications for data exchange standards for registry systems under the Kyoto Protocol, elaborated pursuant to Decision 24/CP.8 of the Conference of the Parties to the UNFCCC.

**Preliminary checks for the process**

5. The Community independent transaction log shall check the status of a registry during the reconciliation process. If the communication link between the registry and the Community independent transaction log has not been established or is temporarily suspended pursuant to Article 6(3) in respect of the reconciliation process, the process shall be rejected and the response code 7005 shall be returned.

**▼ M1**

6. The Community independent transaction log shall perform registry version and registry authentication checks, message viability checks, and data integrity checks during the reconciliation process and return the appropriate response codes if a discrepancy is detected, as set out in Table XII-1 under the range 7900 to 7999. The above-mentioned checks are equivalent to the checks related to the response codes that are set out in the functional and technical specifications for data exchange standards for registry systems under the Kyoto Protocol, elaborated pursuant to Decision 24/CP.8 of the Conference of the Parties to the UNFCCC and are reproduced in the last column of Table XII-1 alongside the equivalent response codes under the range 7900 to 7999. If a check under the above mentioned data exchange standards that is equivalent to the checks whose response codes are set out in Table XII-1 under the range 7900 to 7999 or the implementation by the UNFCCC independent transaction log of such a check is changed by the ITL Administrator, the Central Administrator shall disable the equivalent check.

**▼ B****Secondary checks for the process**

7. The Community independent transaction log shall perform secondary checks during the reconciliation process, once the preliminary checks have been passed. The secondary checks, and the adjoining response codes which are returned when an inconsistency is detected, are set out in table X-1.

**Table X-1: Secondary Checks**

| Process description | Community independent transaction log response codes |
|---------------------|--|
| Reconciliation      | Range: 7501 to 7524                                  |

**Manual intervention**

8. If the information held in a registry has been amended in response to a process initiated but not finalised pursuant to Articles 34, 35 or 36, the Central Administrator shall instruct the registry administrator of that registry to reverse that process by amending the information held back to its original state.

If the information held in a registry has not been amended in response to a process initiated and finalised pursuant to Articles 34, 35 or 36, the Central Administrator shall instruct the registry administrator of that registry to finalise that process by amending the information held accordingly.

9. Where the reconciliation process has identified an inconsistency, the Central Administrator shall coordinate with the registry administrator or administrators concerned in order to determine the origin of the inconsistency. The Central Administrator shall then, as necessary, either amend the information held in the Community independent transaction log or request the registry administrator or administrators concerned to make specific manual adjustments to the information held in their registry.

**▼B***ANNEX XI***Administrative processes with response codes****Administrative processes**

1. The Community independent transaction log shall provide the following administrative processes:
  - (a) *Transaction clean-up*: all processes under Annex IX which have been initiated but not yet terminated, completed or cancelled within 24 hours shall be cancelled. Transaction clean-up occurs on an hourly basis.
  - (b) *Outstanding units*: all allowances which have not been cancelled pursuant to Articles 60 or 61 on or after 1 May 2008 and on or after 1 May in the first year of each subsequent five-year period shall be identified.
  - (c) *Process status*: a registry administrator may query the status of a process under Annex IX which has been initiated by that registry administrator.
  - (d) *Time synchronisation*: upon request, each registry administrator shall provide the system time of its registry in order that the consistency between the system time of a registry and the system time of the Community independent transaction log can be checked, and that the two times can be synchronised. Upon request, a registry administrator shall change the system time of its registry in order to ensure time synchronisation.

**▼M1**

2. When the communication link between the Community independent transaction log and the UNFCCC independent transaction log is established and all processes concerning allowances, verified emissions, accounts, automatic national allocation plan table changes and Kyoto units shall be completed through the exchange of data via the UNFCCC independent transaction log and thereon to the Community independent transaction log, the Community independent transaction log shall only continue to provide the administrative process under point (b) of paragraph 1.

**▼B**

2. After the communication link between the Community independent transaction log and the UNFCCC independent transaction log has been established, the Community independent transaction log shall only continue to provide the administrative process under paragraph 1(b).
3. Each registry shall be capable of executing correctly the additional administrative processes provided by the UNFCCC independent transaction log, set out in the functional and technical specifications for data exchange standards for registry systems under the Kyoto Protocol, elaborated pursuant to Decision 24/CP.8 of the Conference of the Parties to the UNFCCC.

**Requirements for each process**

4. The message sequence for administrative processes and the components and functions which are utilised during the message sequence are set out in the functional and technical specifications for data exchange standards for registry systems under the Kyoto Protocol, elaborated pursuant to Decision 24/CP.8 of the Conference of the Parties to the UNFCCC.

**Checks for each process**

5. If, during the period referred to in paragraph 2, the Community independent transaction log detects a discrepancy under paragraph 1(a) it shall return the appropriate response codes as set out in the functional and technical specifications for data exchange standards for registry systems under the Kyoto Protocol, elaborated pursuant to Decision 24/CP.8 of the Conference of the Parties to the UNFCCC.
6. If the Community independent transaction log detects a discrepancy under paragraph 1(b) it shall return the response code 7601.
7. During the period referred to in paragraph 2 and where a message is received from a registry under paragraph 1(c) for a process referred to in Annex IX the Community independent transaction log shall perform the following checks:
  - (a) Status of a registry: if the communication link between the registry and the Community independent transaction log has not been established or is temporarily suspended pursuant to Article 6(3) in respect of the

**▼B**

- requested process, the message shall be rejected and the response code 7005 shall be returned.
- (b) Registry version and registry authentication, message viability, and data integrity: if the Community independent transaction log detects a discrepancy, the message shall be rejected and the appropriate response codes shall be returned as set out in the functional and technical specifications for data exchange standards for registry systems under the Kyoto Protocol, elaborated pursuant to Decision 24/CP.8 of the Conference of the Parties to the UNFCCC.
8. During the period referred to in paragraph 2 and where a message is received from a registry under paragraph 1(d) the Community independent transaction log shall perform the following checks:
- (a) Status of a registry: if the communication link between the registry and the Community independent transaction log has not been established or is temporarily suspended pursuant to Article 6(3) in respect of the requested process, the message shall be rejected and the response code 7005 shall be returned.
- (b) Registry version and registry authentication, message viability, data integrity and time synchronisation: if the Community independent transaction log detects a discrepancy, the message shall be rejected and the appropriate response codes shall be returned as set out in the functional and technical specifications for data exchange standards for registry systems under the Kyoto Protocol, elaborated pursuant to Decision 24/CP.8 of the Conference of the Parties to the UNFCCC.

▼ **M1***ANNEX XIa***Processes concerning automatic national allocation plan table changes**

1. In accordance with Articles 17(3) and 44(2), registries may propose to the Community independent transaction log to check and implement an automatic change to the national allocation plan through a process described in this Annex.

**Requirements for each process**

2. In accordance with Articles 17(3) and 44(2), registries may propose to the Community independent transaction log to check and implement an automatic change to the national allocation plan through a process described in this Annex:
  - (a) the registry administrator shall initiate the automatic national allocation plan table change process by assigning a unique correlation identification code comprising the elements set out in Annex VI to its request;
  - (b) the registry administrator shall call the appropriate operation on the Community independent transaction log automatic national allocation plan table change Web service;
  - (c) the Community Independent Transaction Log shall validate the request by calling the appropriate validation function within the Community Independent Transaction Log;
  - (d) if the request is successfully validated and thereby accepted, the Community Independent Transaction Log shall amend the information it holds in accordance with that request;
  - (e) the Community Independent Transaction Log shall call the 'receiveNap-ManagementOutcome' operation on the automatic national allocation plan table change Web service of the registry which sent the request, notifying the registry as to whether the request was successfully validated and thereby accepted, or whether the request was found to contain a discrepancy and was thereby rejected;
  - (f) if the request was successfully validated and thereby accepted, the registry administrator which sent the request shall amend the information held in the registry in accordance with that validated request; otherwise, if the request was found to contain a discrepancy and was thereby rejected, the registry administrator which sent the request shall not amend the information held in the registry in accordance with that rejected request.
3. Provided that automatic national allocation plan table change processes are directed through the UNFCCC independent transaction log, a registry administrator sending a request should receive an acknowledgement of receipt from the UNFCCC independent transaction log within 60 seconds, and should receive a notification of validation from the Community independent transaction log within 24 hours. In all other cases, a registry administrator sending a request should receive an acknowledgement of receipt from the Community independent transaction log within 60 seconds, and should receive a notification of validation from the Community independent transaction log within 24 hours;
4. The components and functions which are utilised during the message sequence are shown in table XIa-1 to XIa-6. The inputs of all functions have been structured to match the format and informational requirements described using web services description language, set out in the functional and technical specifications for data exchange standards for registry systems under the Kyoto Protocol, elaborated pursuant to Decision 24/CP.8 of the Conference of the Parties to the UNFCCC. An asterisk '\*' has been used to denote the fact that an element can appear multiple times as an input.

▼ M1**Table XIa-1: Components and Functions for Processes concerning automatic national allocation plan table changes**

| Component            | Function                                   | Scope  |
|----------------------|--|--------|
| NAPTableManagementWS | AddNEInstallationtoNAP()                   | Public |
|                      | IncreaseNAPAllocationtoNEInstallation()    | Public |
|                      | RemoveNAPAllocationofclosingInstallation() | Public |
|                      | IncreaseNAPAllocationReserve               | Public |
|                      | RemoveNAPAllocationReserve                 | Public |

▼ M2▼ M1**Table XIa-2: NAPTableManagementWS Component**

| Purpose   |   |
|---|---|
| The purpose of this component is to handle web service requests for the management of automatic changes to the national allocation plan table |   |
| Functions exposed through Web Services  |   |
| AddNEInstallationtoNAP()  | Handles the requests for adding new entrant new installations to the national allocation plan table   |
| IncreaseAllocationtoNEInstallationinNAP()   | Handles the requests for increasing the allocation in the national allocation plan table of existing installations that are new entrants                            |
| RemoveNAPAllocationofclosingInstallation()  | Handles the requests for removing the allocation from the national allocation plan table of installations that are closing  |
| IncreaseNAPAllocationReserve()  | Handles the requests for increasing the reserve in the national allocation plan table by a quantity of allowances acquired by the registry through 'replenishment'  |
| RemoveNAPAllocationReserve()  | Handles the requests for removing from the reserve in the national allocation plan table, a quantity of allowances acquired by the registry through 'replenishment' |
| Other functions   |   |
| Not applicable.   |   |
| Roles   |   |
| Community independent transaction log (for all functions) and registry (for the receiveNapManagementOutcome function only)                    |   |

▼ M1

▼ **M1****Table XIa-3: NAPTableManagementWS.AddNEInstallationtoNAP() function**

| Purpose   |           |
|---|-----------|
| <p>This function receives a request for adding a new entrant new installation to the national allocation plan table. The allowances allocated for the years before the current year will have a value of zero. If the new entrant new installation does not receive an allocation, the amount of allowances will have a value of zero. If the new entrant new installation does receive an allocation, the reserve is reduced by an equivalent quantity.</p> <p>The Community independent transaction log authenticates the initiating registry (Originating Registry) by calling the AuthenticateMessage() function and checks the version of the initiating registry by calling CheckVersion() function.</p> <p>If authentication and version checks pass, a '1' result identifier is returned without any response codes, the contents of the request are written to a file by calling the WriteToFile() function and the request is put in a queue.</p> <p>If authentication or version checks fail, a '0' result identifier is returned together with a single response code indicating the error cause.</p> <p>The 'PermitIdentifier' means the permit identification code comprising the elements set out in Annex VI.</p> |           |
| Input parameters  |           |
| From  | Mandatory |
| To  | Mandatory |
| CorrelationId   | Mandatory |
| MajorVersion  | Mandatory |
| MinorVersion  | Mandatory |
| InitiatingRegistry  | Mandatory |
| CommitmentPeriod  | Mandatory |
| NewValueofReserve   | Mandatory |
| <i>Installation (*)</i>   | Mandatory |
| PermitIdentifier  | Mandatory |
| InstallationIdentifier  | Mandatory |
| <i>Allocation (*)</i>   | Mandatory |
| YearinCommitmentPeriod  | Mandatory |
| AmountofAllowances  | Mandatory |
| Output parameters   |           |
| Result Identifier   | Mandatory |
| Response Code   | Optional  |
| Uses  |           |
| <ul style="list-style-type: none"> <li>— AuthenticateMessage</li> <li>— WriteToFile</li> <li>— CheckVersion</li> </ul>  |           |
| Used By   |           |
| Not applicable (called as a web service).   |           |

▼ **M1****Table XIa-4: NAPTableManagementWS.IncreaseAllocationtoNEInstallationinNAPIncreaseallocationtoNEInstallationinNAP() function**

| Purpose   |           |
|---|-----------|
| <p>This function receives a request for increasing the allocation of installations already existing in the national allocation plan table that are considered new entrants. The allowances allocated for the years before the current year won't be modified. The reserve is reduced by a quantity that is equivalent to the quantity allocated in this process.</p> <p>The Community independent transaction log authenticates the initiating registry (Originating Registry) by calling the AuthenticateMessage() function and checks the version of the initiating registry by calling CheckVersion() function.</p> <p>If authentication and version checks pass, a '1' result identifier is returned without any response codes, the contents of the request are written to a file by calling the WriteToFile() function and the request is put in a queue.</p> <p>If authentication or version checks fail, a '0' result identifier is returned together with a single response code indicating the error cause.</p> |           |
| Input parameters  |           |
| From  | Mandatory |
| To  | Mandatory |
| CorrelationId   | Mandatory |
| MajorVersion  | Mandatory |
| MinorVersion  | Mandatory |
| InitiatingRegistry  | Mandatory |
| CommitmentPeriod  | Mandatory |
| NewValueofReserve   | Mandatory |
| <i>Installation (*)</i>   | Mandatory |
| InstallationIdentifier  | Mandatory |
| <i>Allocation (*)</i>   | Mandatory |
| Yearincommitmentperiod  | Mandatory |
| AmountofAllowances  | Mandatory |
| Output parameters   |           |
| ResultIdentifier  | Mandatory |
| ResponseCode  | Optional  |
| Uses  |           |
| <ul style="list-style-type: none"> <li>— AuthenticateMessage</li> <li>— WriteToFile</li> <li>— CheckVersion</li> </ul>  |           |
| Used By   |           |
| Not applicable (called as a web service).   |           |



▼ **M1****Table XIa-5: NAPTableManagementWS RemoveNAPAllocationofclosingInstallation() function**

| Purpose   |           |
|---|-----------|
| <p>This function receives a request for removing installations existing in the national allocation plan table. The allowances yet unallocated will be deleted and an equivalent quantity of allowances will be added to the reserve.</p> <p>The Community independent transaction log authenticates the initiating registry (Originating Registry) by calling the AuthenticateMessage() function and checks the version of the initiating registry by calling CheckVersion() function.</p> <p>If authentication and version checks pass, a '1' result identifier is returned without any response codes, the contents of the request are written to a file by calling the WriteToFile() function and the request is put in a queue.</p> <p>If authentication or version checks fail, a '0' result identifier is returned together with a single response code indicating the error cause.</p> |           |
| Input parameters  |           |
| From  | Mandatory |
| To  | Mandatory |
| CorrelationId   | Mandatory |
| MajorVersion  | Mandatory |
| MinorVersion  | Mandatory |
| InitiatingRegistry  | Mandatory |
| CommitmentPeriod  | Mandatory |
| NewValueofReserve   | Mandatory |
| <i>Installation (*)</i>   | Mandatory |
| InstallationIdentifier  | Mandatory |
| Output parameters   |           |
| Result Identifier   | Mandatory |
| Response Code   | Optional  |
| Uses  |           |
| <ul style="list-style-type: none"> <li>— AuthenticateMessage</li> <li>— WriteToFile</li> <li>— CheckVersion</li> </ul>  |           |
| Used By   |           |
| Not applicable (called as a web service).   |           |

▼ M1**Table XIa-6: NAPTableManagementWS receiveNapManagementOutcome () function**

| Purpose   |           |
|---|-----------|
| <p>This function receives a NAP management operation outcome.</p> <p>The initiating registry (Originating Registry) authenticates the UNFCCC independent transaction log (or Community independent transaction log if all processes referred to in Annex VIII are directed through Community independent transaction log and thereon to the UNFCCC independent transaction log) by calling the AuthenticateMessage() function and checks the version of the transaction log by calling CheckVersion() function.</p> <p>If authentication and version checks pass, a '1' result identifier is returned without any response codes, the contents of the request are written to a file by calling the WriteToFile() function and the request is put in a queue.</p> <p>If authentication or version checks fail, a '0' result identifier is returned together with a single response code indicating the error cause.</p> <p>The response code list is populated with couples (a response code with possibly a list of installation identifiers) if the outcome is '0' for any other cause of error.</p> |           |
| Input parameters  |           |
| From  | Mandatory |
| To  | Mandatory |
| CorrelationId   | Mandatory |
| MajorVersion  | Mandatory |
| MinorVersion  | Mandatory |
| Outcome   | Mandatory |
| Response List   | Optional  |
| Output parameters   |           |
| Result Identifier   | Mandatory |
| Response Code   | Optional  |
| Uses  |           |
| <ul style="list-style-type: none"> <li>— AuthenticateMessage</li> <li>— WriteToFile</li> <li>— CheckVersion</li> </ul>  |           |
| Used By   |           |
| Not applicable (called as a web service).   |           |

▼ M2**Table XIa-6a: NAPTableManagementWS IncreaseNAPAllocation-Reserve () function**

| Purpose  |           |
|--|-----------|
| <p>This function receives a request for increasing the reserve in the national allocation plan table. The reserve is increased by a quantity that is equivalent to the quantity of allowances acquired by the registry through 'replenishment'.</p> <p>The Community independent transaction log authenticates the initiating registry (Originating Registry) by calling the AuthenticateMessage() function and checks the version of the initiating registry by calling CheckVersion() function.</p> <p>If authentication and version checks pass, a '1' result identifier is returned without any response codes, the contents of the request are written to a file by calling the WriteToFile() function and the request is put in a queue.</p> <p>If authentication or version checks fail, a '0' result identifier is returned together with a single response code indicating the error cause.</p> |           |
| Input parameters   |           |
| From   | Mandatory |
| To   | Mandatory |
| CorrelationId  | Mandatory |
| MajorVersion   | Mandatory |
| MinorVersion   | Mandatory |
| InitiatingRegistry   | Mandatory |
| CommitmentPeriod   | Mandatory |
| NewValueofReserve  | Mandatory |
| Output parameters  |           |
| Result Identifier  | Mandatory |
| Response Code  | Optional  |
| Uses   |           |
| <ul style="list-style-type: none"> <li>— AuthenticateMessage</li> <li>— WriteToFile</li> <li>— CheckVersion</li> </ul>   |           |
| Used By  |           |
| Not applicable (called as a web service).  |           |

▼ M2**Table XIa-6b: NAPTableManagementWS RemoveNAPAllocation-Reserve () function**

| Purpose   |           |
|---|-----------|
| <p>This function receives a request for removing from the reserve in the national allocation plan table a quantity of allowances acquired by the registry through 'replenishment'.</p> <p>The Community independent transaction log authenticates the initiating registry (Originating Registry) by calling the AuthenticateMessage() function and checks the version of the initiating registry by calling CheckVersion() function.</p> <p>If authentication and version checks pass, a '1' result identifier is returned without any response codes, the contents of the request are written to a file by calling the WriteToFile() function and the request is put in a queue.</p> <p>If authentication or version checks fail, a '0' result identifier is returned together with a single response code indicating the error cause.</p> |           |
| Input parameters  |           |
| From  | Mandatory |
| To  | Mandatory |
| CorrelationId   | Mandatory |
| MajorVersion  | Mandatory |
| MinorVersion  | Mandatory |
| InitiatingRegistry  | Mandatory |
| CommitmentPeriod  | Mandatory |
| NewValueofReserve   | Mandatory |
| Output parameters   |           |
| Result Identifier   | Mandatory |
| Response Code   | Optional  |
| Uses  |           |
| <ul style="list-style-type: none"> <li>— AuthenticateMessage</li> <li>— WriteToFile</li> <li>— CheckVersion</li> </ul>  |           |
| Used By   |           |
| Not applicable (called as a web service).   |           |

▼ M1

Table XIa-7: Processes concerning NAP Table changes

| Process description   | Community independent transaction log response codes   |
|---|--|
| NAPTableManagementWS.Add-NEInstallationtoNAP                      | 7005, 7122, 7125, 7153, 7154, 7155, 7156, 7159, 7215, 7451, 7452, 7700, 7701, 7702, 7703, 7704 |
| NAPTableManagementWS.IncreaseallocationtoNEInstallationinNAP      | 7005, 7153, 7154, 7155, 7156, 7159, 7207, 7451, 7452, 7700, 7701, 7702, 7703, 7705             |
| NAPTableManagementWS<br>RemoveNA PallocationofclosingInstallation | 7005, 7153, 7154, 7155, 7156, 7159, 7207, 7451, 7700, 7706                                     |
| IncreaseNAPallocationReserve                                      | 7005, 7122, 7153, 7154, 7155, 7156, 7700, 7702<br>7453   |
| RemoveNAPallocationReserve  | 7005, 7122, 7153, 7154, 7155, 7156, 7700, 7702<br>7454   |

▼ M2▼ M1

5. If all the checks have been passed successfully, the Community independent transaction log automatically implements the national allocation plan table change into its database and informs the registry administrator and the Central Administrator thereof.

**▼B***ANNEX XII***List of response codes for all processes****▼M1**

1. The Community independent transaction log shall return response codes as part of each process, where specified in Annexes VIII to XIa. Each response code shall consist of an integer within the range 7000 to 7999. The meaning of each response code is given in table XII-1.

**▼B**

2. Each registry administrator shall ensure that the meaning of each response code is maintained when displaying information in respect of a process under Annex XVI to the authorised representative who initiated that process.

**Table XII-1: Community Independent Transaction Log Response Codes****▼M1**

| Response Code | Description   | Equivalent response code under the data exchange standards |
|---------------|---|--|
| 7005          | The current status of the initiating (or transferring) registry does not permit this process to take place.   |  |
| 7006          | The current status of the acquiring registry does not permit this process to take place   |  |
| 7020          | The specified account identification code does not exist in the acquiring registry.   |  |
| 7021          | The specified account identification code does not exist in the transferring registry.  |  |
| 7022          | The transferring account and acquiring account must be in the same registry for all transactions except external transfers.   |  |
| 7023          | The transferring account and acquiring account must be in different registries for external transfers.  |  |
| 7024          | Force majeure allowances cannot be transferred out of the Party holding account unless being cancelled and retired in accordance with Article 58.   |  |
| 7025          | The transferring account is blocked for all transfers of allowances out of that account, with the exception of the surrender and cancellation and replacement processes pursuant to Articles 52, 53, 60 and 61. |  |
| 7027          | One or more units in the serial block are not recognised as being held by the transferring account.   |  |
| 7101          | The account has already been created.   |  |
| 7102          | An account must have one and only one account holder.   |  |
| 7103          | An account must have one and only one primary authorised representative.  |  |
| 7104          | An account must have one and only one secondary authorised representative.  |  |
| 7105          | An installation must have one and only one contact person.  |  |
| 7106          | The installation associated to this account is already associated to another account.   |  |
| 7107          | The authorised representatives of the account must all be different.  |  |
| 7108          | The alphanumeric identifier specified for the account is already specified for another account.   |  |

**▼B**

**▼B****▼M1**

| Response Code | Description  | Equivalent response code under the data exchange standards |
|---------------|--|--|
| 7109          | The account type being created has not been given the correct commitment period.   |  |
| 7110          | An operator holding account must have one and only one installation associated with that account.  |  |
| 7111          | The specified account does not exist, and therefore it is not possible to update or close the account.                                   |  |
| 7113          | It is not possible to change the account holder of a person holding account.   |  |
| 7114          | The specified account has already been closed therefore it is not possible to close the account.   |  |
| 7115          | The specified account still holds units and therefore it is not possible to close the account.   |  |
| 7117          | The installation linked to the specified account is not in compliance therefore it is not possible to close the account.                 |  |
| 7118          | The specified installation does not exist and therefore it is not possible to update the verified emissions table for that installation. |  |
| 7119          | The specified year is a future year and therefore it is not possible to update the verified emissions table for that year.               |  |
| 7120          | The people and their relationship with the account do not exist and therefore it is not possible to update that relationship.            |  |
| 7122          | The correlation identifier is not in valid format or is out of range.  |  |
| 7124          | The account alphanumeric identifier is not in valid format or is out of range  |  |
| 7125          | The permit identifier is not in valid format or is out of range.   |  |
| 7126          | The installation name is not in valid format or is out of range.   |  |
| 7127          | The installation main activity is not in valid format or is out of range.  |  |
| 7128          | The installation country is not in valid format or is out of range.  |  |
| 7129          | The installation postal code is not in valid format or is out of range.  |  |
| 7130          | The installation city is not in valid format or is out of range.   |  |
| 7131          | The installation address1 is not in valid format or is out of range.   |  |
| 7132          | The installation address2 is not in valid format or is out of range.   |  |
| 7133          | The installation parent company is not in valid format or is out of range.   |  |
| 7134          | The installation subsidiary company is not in valid format or is out of range.   |  |

**▼B**

**▼B****▼M1**

| Response Code | Description | Equivalent response code under the data exchange standards |
|---------------|-------------|--|
|---------------|-------------|--|

**▼B**

|      |   |  |
|------|---|--|
| 7135 | The installation EPER identification is not in valid format or is out of range. |  |
| 7136 | The installation latitude is not in valid format or is out of range.            |  |
| 7137 | The installation longitude is not in valid format or is out of range.           |  |
| 7138 | The people relationship code is not in valid format or is out of range.         |  |
| 7139 | The person identifier is not in valid format or is out of range.                |  |
| 7140 | The people first name is not in valid format or is out of range.                |  |
| 7141 | The people last name is not in valid format or is out of range.                 |  |
| 7142 | The people country is not in valid format or is out of range.                   |  |
| 7143 | The people postal code is not in valid format or is out of range.               |  |
| 7144 | The people city is not in valid format or is out of range.                      |  |
| 7145 | The people address1 is not in valid format or is out of range.                  |  |
| 7146 | The people address2 is not in valid format or is out of range.                  |  |
| 7147 | The people phonenumber1 is not in valid format or is out of range.              |  |
| 7148 | The people phonenumber2 is not in valid format or is out of range.              |  |

**▼M1****▼B**

|      |   |  |
|------|---|--|
| 7150 | The people email is not in valid format or is out of range.                   |  |
| 7151 | The people action is not in valid format or is out of range.                  |  |
| 7152 | The installation verified emission is not in valid format or is out of range. |  |
| 7153 | The from element is not in valid format or is out of range.                   |  |
| 7154 | The to element is not in valid format or is out of range.                     |  |
| 7155 | The major version is not in valid format or is out of range.                  |  |



**▼B****▼M1**

| Response Code | Description | Equivalent response code under the data exchange standards |
|---------------|-------------|--|
|---------------|-------------|--|

**▼B**

|      |  |  |
|------|--|--|
| 7156 | The minor version is not in valid format or is out of range.   |  |
| 7157 | The account type is not in valid format or is out of range.  |  |
| 7158 | The account identifier is not in valid format or is out of range.  |  |
| 7159 | The installation identifier is not in valid format or is out of range.   |  |
| 7160 | It is not possible for a person holding account to have a contact person or his details, or an installation or its details (as listed in section 11.1 of Annex I to Commission Decision 2004/156/EC) associated with that account. |  |

**▼M1**

|      |  |  |
|------|--|--|
| 7161 | The installation related to the operator holding account is not indicated as 'closed' in the national allocation plan table and therefore it is not possible to close the account. |  |
| 7162 | The installation related to the operator holding account does not have an entry in the national allocation plan table and therefore it is not possible to open the account.        |  |

**▼B**

|      |   |  |
|------|---|--|
| 7201 | The amount of allowances for the specified period requested to be issued exceeds the amount approved by the Commission in the national allocation plan.   |  |
| 7202 | The acquiring account is not a Party holding account.   |  |
| 7203 | The national allocation plan table has not been submitted to the Commission and therefore it is not possible for the issuance or allocation of allowances for the specified period to take place. |  |
| 7205 | The units requested to be converted into allowances must be AAUs that have been issued for a commitment period matching the commitment period for which allowances are being issued.              |  |
| 7206 | The specified acquiring account is not the operator holding account which is associated to the specified installation.  |  |
| 7207 | The installation does not exist in the national allocation plan table.  |  |
| 7208 | The specified year does not exist in the national allocation plan table.  |  |
| 7209 | The acquiring account is not the retirement account for the 2005-2007 period.   |  |
| 7210 | Force-majeure allowances can only be issued prior to 30 June 2008.  |  |
| 7211 | The amount of force-majeure allowances requested to be issued exceeds the amount approved by the Commission for the commitment period.  |  |
| 7212 | The acquiring account is not the cancellation account for the 2005-2007 period.   |  |
| 7213 | The reduction in the number of allowances exceeds the correction to the NAP as approved by the Commission.  |  |

**▼B****▼M1**

| Response Code | Description  | Equivalent response code under the data exchange standards |
|---------------|--|--|
| 7214          | The number of allowances transferred is not strictly equal to the number foreseen in the NAP for the specified installation and specified year.  |  |
| 7215          | The installation does not exist.   |  |
| 7216          | The number of allowances transferred for the specified installation and specified year as foreseen in the national allocation plan has already been transferred.   |  |
| 7217          | The specified year is not part of the period 2005-2007.  |  |
| 7218          | The specified AAUs are allowances and therefore it is not possible to convert those AAUs into ERUs.  |  |
| 7219          | The units requested to be issued do not have the correct allowance identification code and therefore it is not possible for the issue to take place.   |  |
| 7220          | The units requested to be issued do not have the correct force majeure allowance identification code and therefore it is not possible for the issue to take place.   |  |
| 7221          | The acquiring or transferring account may not be in a registry referred to in Article 63a.   |  |
| 7222          | The allowances to be transferred may not have a supplementary unit type 4.   |  |
| 7223          | The acquiring account must be the cancellation account for the relevant period.  |  |
| 7224          | Allowances to be issued must have a supplementary unit type 4.   |  |
| 7225          | The combined holdings after the transaction of the two Party holding accounts involved in the transaction in the registry referred to in Article 63a must be equal to their combined holdings before the transaction.  |  |
| 7226          | The balance of the Party holding account capable of holding supplementary unit type 1, 2 or 3 allowances must be greater than or equal to the quantity to be transferred from the registry referred to in Article 63a. |  |
| 7227          | The acquiring account must be the retirement account for the current period.   |  |
| 7228          | Allowances must be those issued for the current period.  |  |
| 7301          | Warning: holdings calculated pursuant to Decision 18/CP.7 of the Conference of the Parties of the UNFCCC are only 1 % above commitment period reserve  |  |
| 7302          | There is no mutual recognition agreement between the transferring registry and the acquiring registry that enables the transfer of allowances.   |  |
| 7304          | After 30 April of the first year of the current period, allowances issued for the preceding period may only be transferred to the cancellation account or retirement account for that period.                          |  |

**▼B**

**▼B****▼M1**

| Response Code | Description  | Equivalent response code under the data exchange standards |
|---------------|--|--|
| 7305          | Allowances are not those issued for the 2005-2007 period.  |  |
| 7353          | It is not possible to surrender allowances issued for the period 2005-2007 for the period 2008-2012 and subsequent five-year periods.  |  |
| 7354          | The transferring account is not an operator holding account.   |  |
| 7355          | It is not possible to surrender allowances issued for the current period for the previous period.  |  |
| 7356          | Units are not eligible for surrender pursuant to Article 53.   |  |
| 7357          | The number of allowances and force majeure allowances requested to be transferred to the retirement account is not equal to the number of allowances surrendered pursuant to Articles 52 and 54. |  |
| 7358          | The number of AAUs requested to be converted from allowances is not equal to the number of allowances surrendered pursuant to Article 52.  |  |
| 7359          | The number of units requested to be transferred to the retirement account is not equal to the number of allowances surrendered pursuant to Article 52 and 53.                                    |  |
| 7360          | The transferring account(s) are not Party holding account(s).  |  |
| 7361          | Units are not eligible for retirement pursuant to Articles 58 and 59.  |  |
| 7362          | The number of CERs requested to be transferred to the cancellation account is not equal to the number of allowances surrendered pursuant to Article 53.  |  |
| 7363          | the quantity of AAUs to be retired is not equal with the quantity of allowances converted with the 'conversion of unallocated allowances for retirement' process.                                |  |
| 7364          | The transaction is not initiated after 30 June of the year following the last year of the relevant five-year period.   |  |
| 7365          | The units to be retired are allowances and thus cannot be retired.   |  |
| 7366          | The quantity to be converted cannot exceed the number of allowances issued but not allocated.  |  |
| 7401          | The number of AAUs requested to be converted into allowances is not equal to the number of allowances cancelled.   |  |
| 7402          | Specified unit type requested to be cancelled in advance of replacement is not an allowance issued for the preceding period.   |  |
| 7404          | The number of allowances cancelled is not equal to the number of allowances to be cancelled pursuant to Article 60(a) and 61(b).   |  |

**▼B**

**▼B****▼M1**

| Response Code | Description | Equivalent response code under the data exchange standards |
|---------------|-------------|--|
|---------------|-------------|--|

**▼B**

|      |   |  |
|------|---|--|
| 7405 | The quantity of allowances cancelled from the transferring account is not equal to the quantity of allowances transferred back to this account. |  |
| 7406 | The transferring account(s) must be accounts referred to in Article 11(1) and (2).  |  |
| 7407 | The acquiring account(s) must be accounts referred to in Article 11(1) and (2).   |  |

**▼M1**

|      |   |  |
|------|---|--|
| 7408 | The number of allowances cancelled must be equal to the number of allowances to be cancelled pursuant to Article 63o. |  |
| 7451 | The total quantity of allowances in the updated NAP and in the current NAP must be equal.                             |  |
| 7452 | The quantity allocated to new entrants may not be greater than the quantity by which the reserve is decreased.        |  |

**▼M2**

|      |  |  |
|------|--|--|
| 7453 | The quantity of allowances added to the reserve must be positive.  |  |
| 7454 | The quantity of allowances removed from the reserve must not exceed the total quantity of allowances acquired through 'replenishment'. |  |

**▼B**

|      |  |  |
|------|--|--|
| 7501 | There is an inconsistency between the registry and the CITL in the operator holding account unit blocks.                               |  |
| 7502 | There is an inconsistency between the registry and the CITL in the person holding account unit blocks.                                 |  |
| 7503 | Information: there are no inconsistencies between the registry and the CITL in the operator holding account unit blocks.               |  |
| 7504 | Information: there are no inconsistencies between the registry and the CITL in the person holding account unit blocks.                 |  |
| 7505 | There is an inconsistency between the registry and the CITL in the totals of the operator holding account unit blocks.                 |  |
| 7506 | There is an inconsistency between the registry and the CITL in the totals of the person holding account unit blocks.                   |  |
| 7507 | Information: there are no inconsistencies between the registry and the CITL in the totals of the operator holding account unit blocks. |  |
| 7508 | Information: there are no inconsistencies between the registry and the CITL in the totals of the person holding account unit blocks.   |  |
| 7509 | There is an inconsistency between the registry and the CITL in the Party holding account unit blocks.                                  |  |

▼B▼M1

| Response Code | Description   | Equivalent response code under the data exchange standards |
|---------------|---|--|
| 7510          | There is an inconsistency between the registry and the CITL in the retirement account unit blocks.                                  |  |
| 7511          | There is an inconsistency between the registry and the CITL in the cancellation account unit blocks.                                |  |
| 7512          | Information: there are no inconsistencies between the registry and the CITL in the Party holding account unit blocks.               |  |
| 7513          | Information: there are no inconsistencies between the registry and the CITL in the retirement account unit blocks.                  |  |
| 7514          | Information: there are no inconsistencies between the registry and the CITL in the cancellation account unit blocks.                |  |
| 7515          | There is an inconsistency between the registry and the CITL in the totals of the Party holding account unit blocks.                 |  |
| 7516          | There is an inconsistency between the registry and the CITL in the totals of the retirement account unit blocks.                    |  |
| 7517          | There is an inconsistency between the registry and the CITL in the totals of the cancellation account unit blocks.                  |  |
| 7518          | Information: there are no inconsistencies between the registry and the CITL in the totals of the Party holding account unit blocks. |  |
| 7519          | Information: there are no inconsistencies between the registry and the CITL in the totals of the retirement account unit blocks.    |  |
| 7520          | Information: there are no inconsistencies between the registry and the CITL in the totals of the cancellation account unit blocks.  |  |
| 7521          | There is an inconsistency between the registry and the CITL in the replacement account unit blocks.                                 |  |
| 7522          | Information: there are no inconsistencies between the registry and the CITL in the replacement account unit blocks.                 |  |
| 7523          | There is an inconsistency between the registry and the CITL in the totals of the replacement account unit blocks.                   |  |

▼B

**▼B****▼M1**

| Response Code | Description  | Equivalent response code under the data exchange standards |
|---------------|--|--|
| 7524          | Information: there are no inconsistencies between the registry and the CITL in the totals of the replacement account unit blocks.  |  |
| 7525          | The verified emissions figure for year X cannot be corrected after 30 April of year X+1 unless the competent authority notifies the Central Administrator the new compliance status applicable to the installation whose verified emissions figure is corrected. |  |
| 7601          | Reminder: the specified unit blocks of allowances issued for the previous period have not yet been cancelled pursuant to Articles 60 and 61.   |  |
| 7700          | The commitment period code is out of range.  |  |
| 7701          | Allocation must be provided for all the years within the commitment period except the years before the current one.  |  |
| 7702          | The new reserve must remain positive or zero.  |  |
| 7703          | The amount of allowances to allocate for an installation and a year must be greater than or equal to 0.  |  |
| 7704          | The permit identifier must exist and be connected to the installation identifier.  |  |
| 7705          | The amount of allowances allocated for an installation and a year in the updated NAP must be greater than or equal to this amount in the current NAP.  |  |
| 7706          | The amount of allowances deleted from the NAP table for installations must be equal to the amount by which the reserve is increased.   |  |
| 7901          | Initiating registry must be listed in Registry table.  | 1501   |
| 7902          | Initiating registry status must allow transactions to be proposed. (The CITL will maintain the current status of each registry. In this case, the CITL must recognize that the registry is fully operational.).  | 1503   |
| 7903          | Acquiring registry status must allow transactions to be accepted. (The CITL will maintain the current status of each registry. In this case, the CITL must recognize that the registry is fully operational.).   | 1504   |
| 7904          | Registry status must allow reconciliation actions to be conducted. (The CITL will maintain the current status of each registry. In this case, the CITL must recognize that the registry is available for reconciliation.).                                       | 1510   |
| 7905          | Transaction ID must be comprised of a valid registry code followed by numeric values.  | 2001   |
| 7906          | Transaction type code must be valid.   | 2002   |

▼ M1

| Response Code | Description   | Equivalent response code under the data exchange standards |
|---------------|---|--|
| 7907          | Supplementary Transaction Type code must be valid.  | 2003   |
| 7908          | Transaction status code must be valid.  | 2004   |
| 7909          | Account Type code must be valid.  | 2006   |
| 7910          | Initiating Account Identifier must be greater than zero.                                      | 2007   |
| 7911          | Acquiring Account Identifier must be greater than zero.                                       | 2008   |
| 7912          | The Originating Registry of all unit blocks must be valid.                                    | 2010   |
| 7913          | Unit Type code must be valid.   | 2011   |
| 7914          | Supplementary Unit Type code must be valid.   | 2012   |
| 7915          | Unit Serial Block Start and Unit Serial Block End must be present.                            | 2013   |
| 7916          | Unit Serial Block End must be greater than or equal to the Unit Serial Block Start.           | 2014   |
| 7917          | RMUs, ERUs converted from RMUs, tCERs and ICERs must have a valid LULUCF activity code.       | 2015   |
| 7918          | AAUs, ERUs converted from AAUs and CERs must not have a LULUCF activity code.                 | 2016   |
| 7919          | ERUs, CERs, tCERs, and ICERs must have a valid Project ID.                                    | 2017   |
| 7920          | AAUs or RMUs must not have a Project ID.  | 2018   |
| 7921          | ERUs must have a valid 'Track Code'.  | 2019   |
| 7922          | AAUs, RMUs, CERs, tCERs and ICERs must not have a track code.                                 | 2020   |
| 7923          | AAUs, RMUs, ERUs and CERs must not have an Expiry Date.                                       | 2022   |
| 7924          | Transaction ID for proposed transactions must not already exist in the CITL.                  | 3001   |
| 7925          | Transaction ID for ongoing transactions must already exist in the CITL.                       | 3002   |
| 7926          | Previous completed transactions cannot be completed again.                                    | 3003   |
| 7927          | Previously rejected transactions cannot be completed.   | 3004   |
| 7928          | Transactions for which a CITL discrepancy has been previously identified cannot be completed. | 3005   |
| 7930          | Previously terminated transactions cannot be completed.                                       | 3007   |
| 7931          | Previously cancelled transactions cannot be completed.  | 3008   |
| 7932          | Previously accepted external transactions cannot be terminated.                               | 3009   |

▼ M1

| Response Code | Description  | Equivalent response code under the data exchange standards |
|---------------|--|--|
| 7933          | Transaction status of Accepted or Rejected is not valid for non-external transactions.   | 3010   |
| 7934          | Transaction status from Initiating registry must indicate status of Proposed, Completed, or Terminated.  | 3011   |
| 7935          | Transaction status from Acquiring registry for an External Transfer must indicate status of Rejected or Accepted.                                    | 3012   |
| 7936          | Applicable Commitment Period must correspond to the current or next Commitment Period (including their 'true-up' periods).                           | 4001   |
| 7937          | Units identified in the transaction must already exist in the CITL.  | 4002   |
| 7938          | Units identified in the transaction must be held by Initiating registry.   | 4003   |
| 7939          | All attributes of all unit blocks must be consistent with CITL unit block attributes except where attributes are changed by the current transaction. | 4004   |
| 7940          | All unit blocks in transaction must be for a single Applicable Commitment Period.  | 4005   |
| 7941          | For all transactions except for external transfers, the Initiating and Acquiring Registries must be the same.  | 4006   |
| 7942          | For external transfers, the Initiating and Acquiring Registries must be different.   | 4007   |
| 7943          | Units identified in the transaction must not have inconsistencies identified through reconciliation with the CITL.                                   | 4008   |
| 7945          | Units identified in the transaction must not be involved in another transaction.   | 4010   |
| 7946          | Cancelled units must not be subject to further transactions.   | 4011   |
| 7947          | A transaction proposal must contain at least one unit block.   | 4012   |
| 7948          | A transaction must not issue more than one Unit Type.  | 5004   |
| 7949          | The Original Commitment Period must be the same for all units issued by the transaction  | 5005   |
| 7950          | The Applicable Commitment Period must be the same as the Original Commitment Period for all units issued by the transaction.                         | 5006   |
| 7951          | Cancellation to Excess Issuance Cancellation Account must not take place in a national registry.   | 5152   |
| 7952          | The Acquiring Account for a cancellation transaction must be a cancellation account.   | 5153   |
| 7953          | Account identifiers must be provided for acquiring accounts in cancellation transactions.  | 5154   |



▼ M1

| Response Code | Description  | Equivalent response code under the data exchange standards |
|---------------|--|--|
| 7954          | The unit blocks to be cancelled must have the same Applicable Commitment Period as the cancellation Account.     | 5155   |
| 7955          | The Initiating registry retiring units must be a national registry or the Community Registry.                    | 5251   |
| 7956          | The Acquiring Account for a retirement transaction must be a retirement account.                                 | 5252   |
| 7957          | Account identifiers must be provided for acquiring accounts in retirement transactions.                          | 5253   |
| 7958          | The Unit Blocks retired must have the same Applicable Commitment as the Retirement Account.                      | 5254   |
| 7959          | The Initiating registry carrying over units must be a national registry.   | 5301   |
| 7960          | The Initiating Account for a carry-over transaction must be a holding account.                                   | 5302   |
| 7961          | Units may be carried-over only to the next subsequent commitment period.   | 5303   |
| 7962          | Reconciliation Identifier must be greater than zero.   | 6201   |
| 7963          | Reconciliation ID must be comprised of a valid registry code followed by numeric values.                         | 6202   |
| 7964          | Reconciliation status must be a value between 1 and 11.  | 6203   |
| 7965          | Reconciliation snapshot must be a date between 1 October 2004 and the current date plus 30 days.                 | 6204   |
| 7966          | Account Type must be valid.  | 6205   |
| 7969          | Reconciliation ID must exist in the Reconciliation Log table.  | 6301   |
| 7970          | Reconciliation status sent by registry must be valid.  | 6302   |
| 7971          | Incoming reconciliation status must be the same as the reconciliation status recorded by the CITL.               | 6303   |
| 7972          | The registry reconciliation snapshot DateTime must be consistent with the CITL Reconciliation Snapshot DateTime. | 6304   |

**▼B***ANNEX XIII***Testing procedures**

1. A registry and the Community independent transaction log shall complete the following stages of testing:
  - (a) Unit tests: individual components shall be tested against their specifications.
  - (b) Integration tests: groups of components, comprising parts of the complete system, shall be tested against their specifications.
  - (c) System tests: the system as a whole shall be tested against its specifications.
  - (d) Load tests: the system shall be subjected to peaks in activity reflecting the likely demands that will be made on the system by its users.
  - (e) Security testing: any security weaknesses of the system shall be identified.
2. Individual tests for a registry carried out as part of the testing stages set out in paragraph 1 shall be conducted according to a pre-defined test plan and the results shall be documented. This documentation shall be made available to the Central Administrator on request. Any deficiencies in a registry detected during the testing stages set out in paragraph 1 shall be addressed before any testing of data exchange takes place between that registry and the Community independent transaction log.
3. The Central Administrator shall require a registry to complete the following stages of testing:
  - (a) Authentication tests: the ability of the registry to identify the Community independent transaction log, and vice versa, shall be tested.
  - (b) Time synchronisation tests: the ability of the registry to establish its system time and to change its system time in order to be consistent with the system time of the Community independent transaction log and UNFCCC independent transaction log shall be tested.
  - (c) Data format tests: the ability of the registry to generate messages corresponding to the appropriate process status and stage and to the appropriate format, set out in the functional and technical specifications for data exchange standards for registry systems under the Kyoto Protocol, elaborated pursuant to Decision 24/CP.8 of the Conference of the Parties to the UNFCCC, shall be tested.
  - (d) Programming code and database operations tests: the ability of the registry to process messages received which correspond to the appropriate format, set out in the functional and technical specifications for data exchange standards for registry systems under the Kyoto Protocol, elaborated pursuant to Decision 24/CP.8 of the Conference of the Parties to the UNFCCC, shall be tested.

**▼M1**

- (e) Integrated process testing: the ability of the registry to execute all processes, including all relevant statuses and stages set out in Annexes VIII to XI and XIa, and to allow manual interventions to the database pursuant to Annex X, shall be tested.

**▼B**

- (f) Data logging tests: the ability of the registry to establish and maintain the records required pursuant to Article 73(2) shall be tested.

**▼M1**

4. The Central Administrator shall require a registry to demonstrate that the input codes referred to in Annex VII and the response codes referred to in Annexes VIII to XI and XIa are contained within that registry's database and interpreted and used appropriately in respect of processes.

**▼B**

5. The testing stages set out in paragraph 3 shall take place between the testing area of the registry and the testing area of the Community independent transaction log, established pursuant to Article 71.
6. Individual tests carried out as part of the testing stages set out in paragraph 3 may vary to reflect the software and hardware used by a registry.

**▼B**

7. Individual tests carried out as part of the testing stages set out in paragraph 3 shall be conducted according to a pre-defined test plan and the results shall be documented. This documentation shall be made available to the Central Administrator on request. Any deficiencies in a registry detected during the testing stages set out in paragraph 3 shall be addressed prior to a communication link between that registry and the Community independent transaction log being established. The registry administrator shall demonstrate that any such deficiencies have been addressed by the successful completion of the testing stages set out in paragraph 3.

**▼B***ANNEX XIV***Initialisation procedures**

1. By 1 September 2004 at the latest, each Member State shall notify the Commission of the following information:
  - (a) Name, address, city, postcode, country, telephone number, facsimile number and e-mail address of the registry administrator for its registry.
  - (b) Address, city, postcode and country of the physical location of the registry.
  - (c) The uniform resource locator (URL) and the port(s) of both the secure area and public area of the registry, and the URL and the port(s) of the testing area.
  - (d) Description of the primary and backup hardware and software used by the registry, and of the hardware and software supporting the testing area pursuant to Article 68.
  - (e) Description of the systems and procedures for the safeguarding of all data, including the frequency with which a backup of the database is undertaken, and the systems and procedures for prompt recovery of all data and operations in the event of a disaster pursuant to Article 68.
  - (f) Description of the security plan of the registry established pursuant to the general security requirements under Annex XV.
  - (g) Description of the system and procedures of the registry in respect of change management pursuant to Article 72.
  - (h) Information requested by the Central Administrator to enable the distribution of digital certificates pursuant to Annex XV.

Any subsequent changes shall be promptly notified to the Commission.
2. For the period 2005-2007, each Member State shall notify the Commission of the number of force majeure allowances to be issued, subsequent to an authorisation to issue such allowances being granted by the Commission pursuant to Article 29 of Directive 2003/87/EC.
3. In advance of the 2008-2012 period and each subsequent five year period, each Member State shall notify the Commission of the following information:
  - (a) The total number of ERUs and CERs which operators are allowed to use for each period pursuant to Article 11a(1) of Directive 2003/87/EC.
  - (b) The commitment period reserve, calculated in accordance with Decision 18/CP.7 of the Conference of the Parties to the UNFCCC as 90 per cent of the Member State's assigned amount or 100 % of five times its most recently reviewed inventory, whichever is lowest. Any subsequent changes shall be promptly notified to the Commission.

**National allocation plan table requirements**

4. Each national allocation plan shall be submitted in accordance with the formats set out in paragraphs 5 and 7.

**▼M2**

5. The format for submitting a national allocation plan table to the Commission is the following:
  - (a) total number of allowances issued: in a single cell the total number of allowances that will be issued for the period covered by the national allocation plan.
  - (b) total number of allowances not allocated to incumbents (reserve): in a single cell the total number of allowances (issued or purchased) that are set aside for new entrants and auctioning for the period covered by the national allocation plan.
  - (c) years: in individual cells for each of the years covered in the national allocation plan in ascending order.
  - (d) installation identification code: in individual cells in ascending order. The installations listed shall include installations unilaterally included under Article 24 of Directive 2003/87/EC and shall not include any installations temporarily excluded under Article 27 of Directive 2003/87/EC.

**▼ M2**

- (e) allocated allowances: the allowances to be allocated for a specified year for a specified installation shall be entered into the cell connecting that year to that installation's identification code.

**▼ B**

6. The installations listed under paragraph 5(d) shall include installations unilaterally included under Article 24 of Directive 2003/87/EC and shall not include any installations temporarily excluded under Article 27 of Directive 2003/87/EC.

**▼ M1**

7. The XML schema for submitting a national allocation plan table to the Commission is the following:

```
<?xml version="1.0" encoding="UTF-8"?>->

<xs:schema          targetNamespace="urn:KyotoProtocol:RegistrySystem:CITL:1.0:0.0"
                    xmlns:xs="http://www.w3.org/2001/XMLSchema"
                    xmlns="urn:KyotoProtocol:RegistrySystem:CITL:1.0:0.0"
                    elementFormDefault="qualified">

  <xs:simpleType name="ISO3166MemberStatesType">
    <xs:restriction base="xs:string">
      <xs:enumeration value="AT"/>
      <xs:enumeration value="BE"/>
      <xs:enumeration value="BG"/>
      <xs:enumeration value="CY"/>
      <xs:enumeration value="CZ"/>
      <xs:enumeration value="DE"/>
      <xs:enumeration value="DK"/>
      <xs:enumeration value="EE"/>
      <xs:enumeration value="ES"/>
      <xs:enumeration value="FI"/>
      <xs:enumeration value="FR"/>
      <xs:enumeration value="GB"/>
      <xs:enumeration value="GR"/>
      <xs:enumeration value="HU"/>
      <xs:enumeration value="IE"/>
      <xs:enumeration value="IT"/>
      <xs:enumeration value="LT"/>
      <xs:enumeration value="LU"/>
      <xs:enumeration value="LV"/>
      <xs:enumeration value="MT"/>
      <xs:enumeration value="NL"/>
      <xs:enumeration value="PL"/>
      <xs:enumeration value="PT"/>
      <xs:enumeration value="RO"/>
      <xs:enumeration value="SE"/>
      <xs:enumeration value="SI"/>
      <xs:enumeration value="SK"/>
    </xs:restriction>
  </xs:simpleType>

  <xs:simpleType name="AmountOfAllowancesType">
```

▼ **M1**

```

<xs:restriction base="xs:integer">
  <xs:minInclusive value="0"/>
  <xs:maxInclusive value="9999999999999999"/>
</xs:restriction>
</xs:simpleType>
<xs:group name="YearAllocation">
  <xs:sequence>
    <xs:element name="yearInCommitmentPeriod">
      <xs:simpleType>
        <xs:restriction base="xs:int">
          <xs:minInclusive value="2005"/>
          <xs:maxInclusive value="2058"/>
        </xs:restriction>
      </xs:simpleType>
    </xs:element>
    <xs:element name="allocation" type="AmountOfAllowancesType"/>
  </xs:sequence>
</xs:group>
<xs:simpleType name="ActionType">
  <xs:annotation>
    <xs:documentation>The action to be undertaken for the installation
  </xs:documentation>
  <xs:restriction base="xs:string">
    <xs:enumeration value="A"/>
    <xs:enumeration value="U"/>
    <xs:enumeration value="D"/>
  </xs:restriction>
</xs:simpleType>
<xs:complexType name="InstallationType">
  <xs:sequence>
    <xs:element name="action" type="ActionType"/>
    <xs:element name="installationIdentifier">
      <xs:simpleType>
        <xs:restriction base="xs:integer">
          <xs:minInclusive value="1"/>
          <xs:maxInclusive value="9999999999999999"/>
        </xs:restriction>
      </xs:simpleType>
    </xs:element>
  </xs:sequence>
</xs:complexType>

```

*A*= Add the installation to the NAP  
*U*= Update the allocations for the installation in the NAP  
*D*= Delete the installation from the NAP

For each action, all year of a commitment period need to be given

▼ **M1**

```

</xs:element>
<xs:element name="permitIdentifier">
  <xs:simpleType>
    <xs:restriction base="xs:string">
      <xs:minLength value="1"/>
      <xs:maxLength value="50"/>
      <xs:pattern value="[A-Z0-9\-.]+"\>
    </xs:restriction>
  </xs:simpleType>
</xs:element>
<xs:group ref="YearAllocation" minOccurs="3"
maxOccurs="5"/>
</xs:sequence>
</xs:complexType>
<xs:simpleType name="CommitmentPeriodType">
  <xs:restriction base="xs:int">
    <xs:minInclusive value="0"/>
    <xs:maxInclusive value="10"/>
  </xs:restriction>
</xs:simpleType>
<xs:element name="nap">
  <xs:complexType>
    <xs:sequence>
      <xs:element name="originatingRegistry" type="I-
SO3166MemberStatesType"/>
      <xs:element name="commitmentPeriod" type="Commit-
mentPeriodType"/>
      <xs:element name="installation" type="InstallationType"
maxOccurs="unbounded">
        <xs:unique name="yearAllocationConstraint">
          <xs:selector xpath="yearInCommitmentPeriod"/>
          <xs:field xpath="."/>
        </xs:unique>
      </xs:element>
      <xs:element name="reserve" type="AmountOfAllowan-
cesType"/>
    </xs:sequence>
  </xs:complexType>
  <xs:unique name="installationIdentifierConstraint">
    <xs:selector xpath="installation"/>
    <xs:field xpath="installationIdentifier"/>
  </xs:unique>
</xs:element>
</xs:schema>.

```

▼ **B**

8. As part of the initialisation procedures set out in the functional and technical specifications for data exchange standards for registry systems

**▼B**

under the Kyoto Protocol, elaborated pursuant to Decision 24/CP.8 of the Conference of the Parties to the UNFCCC, the Commission shall inform the Secretariat to the UNFCCC of the account identification codes of the cancellation accounts, retirement accounts and replacement accounts of each registry.



**▼B***ANNEX XV***Security standards****Communication link between the Community independent transaction log and each registry**

1. **►M1** When the communication link between the Community independent transaction log and the UNFCCC independent transaction log is not established, all processes concerning allowances, automatic national allocation plan table changes, verified emissions and accounts shall be completed using a communication link with the following properties: ◀
  - (a) Secure transmission shall be achieved through the use of secure socket layer (SSL) technology with a minimum of 128 bit encryption.
  - (b) The identity of each registry shall be authenticated using digital certificates for the requests originating from the Community independent transaction log. The identity of the Community independent transaction log shall be authenticated using digital certificates for each request originating from a registry. The identity of each registry shall be authenticated using a user name and password for each request originating from a registry. The identity of the Community independent transaction log shall be authenticated using a user name and password for each request originating from the Community independent transaction log. Digital certificates shall be registered as valid by the certification authority. Secure systems shall be used to store the digital certificates and usernames and passwords, and access shall be limited. Usernames and passwords shall have a minimum length of 10 characters and shall comply with the hypertext transfer protocol (HTTP) basic authentication scheme (<http://www.ietf.org/rfc/rfc2617.txt>).

**▼M1**

2. When the communication link between the Community independent transaction log and the UNFCCC independent transaction log is established, all processes concerning allowances, automatic national allocation plan table changes, verified emissions, accounts and Kyoto units shall be completed using a communication link with the properties set out in the functional and technical specifications for data exchange standards for registry systems under the Kyoto Protocol, elaborated pursuant to Decision 24/CP.8 of the Conference of the Parties to the UNFCCC.

**▼B****Communication link between the Community independent transaction log and its authorised representatives, and each registry and all authorised representatives in that registry**

3. The communication link between the Community independent transaction log and its authorised representatives, and between a registry and the authorised representatives of account holders, verifiers and the registry administrator, when the authorised representatives are obtaining access from a network different from the one serving the Community independent transaction log or that registry, shall have the following properties:
  - (a) Secure transmission shall be achieved through the use of secure socket layer (SSL) technology with a minimum of 128 bit encryption.
  - (b) The identity of each authorised representative shall be authenticated through the use of usernames and passwords, which are registered as valid by the registry.
4. The system for issuing usernames and passwords pursuant to paragraph 3(b) to authorised representatives shall have the following properties:
  - (a) At any time, each authorised representative shall have a unique username and a unique password.
  - (b) The registry administrator shall maintain a list of all authorised representatives who have been granted access to the registry and their access rights within that registry.
  - (c) The number of authorised representatives of the Central Administrator and registry administrator shall be kept to a minimum and access rights shall be allocated solely on the basis of enabling administrative tasks to be performed.
  - (d) Any default vendor passwords with Central Administrator or registry administrator access rights shall be changed immediately after instal-

**▼B**

lation of the software and hardware for the Community independent transaction log or registry.

- (e) Authorised representatives shall be required to change any temporary passwords they have been given upon accessing the secure area of the Community independent transaction log or registry for the first time, and thereafter shall be required to change their passwords every two months at a minimum.
- (f) The password management system shall maintain a record of previous passwords for an authorised representative and prevent re-use of the previous ten passwords for that authorised representative. Passwords shall have a minimum length of 8 characters and be a mix of numeric and alphabetical characters.
- (g) Passwords shall not be displayed on a computer screen when being entered by an authorised representative, and password files shall not be directly visible to an authorised representative of the Central Administrator or registry administrator.

**Communication link between the Community independent transaction log and the general public, and each registry and the general public**

- 5. The public area of the website of the Community independent transaction log and the public website of a registry shall not require authentication of its users representing the general public.
- 6. The public area of the Community independent transaction log website and the public area of a registry website shall not permit its users representing the general public to directly access data from the database of the Community independent transaction log or the database of that registry. Data which is publicly accessible in accordance with Annex XVI shall be accessed via a separate database.

**General security requirements for the Community independent transaction log and each registry**

- 7. The following general security requirements shall apply to the Community independent transaction log and each registry:
  - (a) A firewall shall protect the Community independent transaction log and each registry from the Internet, and shall be configured as strictly as is possible to limit traffic to and from the Internet.
  - (b) The Community independent transaction log and each registry shall run regular virus scans on all nodes, workstations and servers within their networks. Anti-virus software shall be updated regularly.
  - (c) The Community independent transaction log and each registry shall ensure that all node, workstation and server software is correctly configured and routinely patched as security and functional updates are released.
  - (d) When necessary, the Community independent transaction log and each registry shall apply additional security requirements to ensure that the registry system is able to respond to new security threats.

**▼ B***ANNEX XVI***Reporting requirements of each registry administrator and the Central Administrator****Publicly available information from each registry and the Community independent transaction log****▼ M1**

1. The Central Administrator shall display and update the information in paragraphs 2 to 4a in respect of the registry system on the public area of the Community independent transaction log's web site, in accordance with the specified timing, and each registry administrator shall display and update this information in respect of its registry on the public area of that registry's web site, in accordance with the specified timing.

**▼ B**

2. The following information for each account shall be displayed in the week after the account has been created in a registry, and shall be updated on a weekly basis:

- (a) account holder name: the holder of the account (person, operator, Commission, Member State); ► **M1** In the case of operator holding accounts, the account holder name should be identical to name of the natural or legal person that is the holder of the relevant greenhouse gas permit; ◀
- (b) alphanumeric identifier: the identifier specified by the account holder assigned to each account;

**▼ M1**

- (c) name, address, city, postcode, country, telephone number, facsimile number and email address of the primary and secondary authorised representatives of the account specified by the account holder for that account, unless the registry administrator allows account holders to request keeping all or some of this information confidential and the account holder requested the registry administrator in writing not to display all or some of this information.

**▼ B**

3. The following additional information for each operator holding account shall be displayed in the week after the account has been created in the registry, and shall be updated on a weekly basis:

- (a) points 1 to 4.1, 4.4 to 5.5 and point 7 (activity 1) of the information identifying the installation related to the operator holding account as listed in section 11.1 of Annex I to Commission Decision 2004/156/EC;
- (b) permit identification code: the code assigned to the installation related to the operator holding account comprising the elements set out in Annex VI;
- (c) installation identification code: the code assigned to the installation related to the operator holding account comprising the elements set out in Annex VI;

**▼ M1**

- (d) allowances and any *force majeure* allowances allocated and issued to the installation related to the operator holding account, which is part of the national allocation plan table or is a new entrant, under Article 11 of Directive 2003/87/EC and any corrections to such allocations;
- (e) The date of the greenhouse gas permit's entry into force and the date of the opening of the account.

**▼ B**

4. The following additional information for each operator holding account for the years 2005 onwards shall be displayed in accordance with the following specified dates:

**▼ M1**

- (a) verified emissions figure, along with its corrections in accordance with Article 51 for the installation related to the operator holding account for year X shall be displayed from 15 May onwards of year (X+1);

**▼ M2****▼ M1**

- (c) a symbol identifying whether the installation related to the operator holding account did or did not surrender the necessary number of allowances for year X by 30 April of year (X+1) in accordance with point (e) of Article 6(2) of Directive 2003/87/EC and any subsequent changes to that status pursuant to corrections to verified emissions in accordance with Article 51 (4) of this Regulation shall be displayed from 15 May onwards of year (X+1). Depending on the installation's compliance status figure and the registry's operational status, the following symbols shall be displayed together with the following statements:

**Table XVI-1: compliance statements**

| Compliance status figure for year X under Article 55 on 30 April of year (X+1)  | Symbol                                 | Statement   |
|---|--|---|
|   | to be displayed on CITL and registries |   |
| Total surrendered allowances in accordance with Articles 52, 53, 54 for period $\geq$ verified emissions in period until current year | A                                      | 'A number of allowances and Kyoto units greater than or equal to verified emissions were surrendered by 30 April'   |
| Total surrendered allowances in accordance with Articles 52, 53 and 54 for period $<$ verified emissions in period until current year | B                                      | 'A number of allowances and Kyoto units lower than verified emissions were surrendered by 30 April'   |
|   | C                                      | 'Verified emissions were not entered until 30 April'  |
| Verified emissions in period until current year were corrected pursuant to Article 51   | D                                      | 'Verified emissions were corrected by competent authority after 30 April of year X. The competent authority of the Member State decided that the installation is not in compliance for year X.'   |
| Verified emissions in period until current year were corrected pursuant to Article 51   | E                                      | 'Verified emissions were corrected by competent authority after 30 April of year X. The competent authority of the Member State decided that the installation is in compliance for year X.'   |
|   | X                                      | 'Entering verified emissions and/or surrendering was impossible until 30 April due to the allowance surrender process and/or verified emissions update process being suspended for the Member State's registry in accordance with Article 6(3)' |

- (d) a symbol indicating if the installation's account is blocked in accordance with Article 27(1) shall be displayed from 31 March onwards of year (X+1).

**▼ M2**

- 4a. The following general information shall be displayed and updated within seven working days and of any changes thereto:
- (a) the national allocation plan table of each Member State, indicating the allocations to installations and the quantity of allowances reserved for later allocation or sale shall be displayed and updated whenever there is a correction to the national allocation plan table, clearly indicating where corrections were made;
- (b) the fees charged for the creating and annual maintenance of holding accounts in each registry. Updates to this information shall be notified to the Central Administrator by the registry administrator within 15 working days of any change in fees;

**▼ M2**

- (c) the type of Kyoto units that may be held by operator and person holding accounts in registries.

**▼ M1**

- 4b. The fees charged for the opening and annual maintenance of holding accounts in each registry shall be displayed on a continuous basis. Updates to this information shall be notified to the Central Administrator by the registry administrator within 15 days of any change in fees.

**▼ B****Publicly available information from each registry**

- 5. Each registry administrator shall display and update the information in paragraphs 6 to 10 in respect of its registry on the public area of that registry's web site, in accordance with the specified timing.
- 6. The following information for each project identifier for a project activity implemented pursuant to Article 6 of the Kyoto Protocol against which the Member State has issued ERUs shall be displayed in the week after the issue has taken place:
  - (a) project name: a unique name for the project;
  - (b) project location: the Member State and town or region in which the project is located;
  - (c) years of ERU issuance: the years in which ERUs have been issued as a result of the project activity implemented pursuant to Article 6 of the Kyoto Protocol;
  - (d) reports: downloadable electronic versions of all publicly available documentation relating to the project, including proposals, monitoring, verification and issuance of ERUs, where relevant, subject to the confidentiality provisions in Decision -/CMP.1 [Article 6] of the Conference of the Parties to the UNFCCC serving as the meeting of the Parties to the Kyoto Protocol;

**▼ M1**

- (e) any set-aside table drawn up in accordance with Commission Decision 2006/780/EC <sup>(1)</sup>.

**▼ B**

- 7. The following holding and transaction information, by unit identification code comprising the elements set out in Annex VI, relevant for that registry for the years 2005 onwards shall be displayed in accordance with the following specified dates:
  - (a) the total quantity of ERUs, CERs, AAUs and RMUs held in each account (person holding, operator holding, Party holding, cancellation, replacement or retirement) on 1 January of year X shall be displayed from 15 January onwards of year (X+5);
  - (b) the total quantity of AAUs issued in year X on the basis of the assigned amount pursuant to Article 7 of Decision No 280/2004/EC shall be displayed from 15 January onwards of year (X+1);
  - (c) the total quantity of ERUs issued in year X on the basis of project activity implemented pursuant to Article 6 of the Kyoto Protocol shall be displayed from 15 January onwards of year (X+1);
  - (d) the total quantity of ERUs, CERs, AAUs and RMUs acquired from other registries in year X and the identity of the transferring accounts and registries shall be displayed from 15 January onwards of year (X+5);
  - (e) the total quantity of RMUs issued in year X on the basis of each activity under Article 3, paragraphs 3 and 4 of the Kyoto Protocol shall be displayed from 15 January onwards of year (X+1);
  - (f) the total quantity of ERUs, CERs, AAUs and RMUs transferred to other registries in year X and the identity of the acquiring accounts and registries shall be displayed from 15 January onwards of year (X+5);
  - (g) the total quantity of ERUs, CERs, AAUs and RMUs cancelled in year X on the basis of activities under Article 3, paragraphs 3 and 4 of the

<sup>(1)</sup> OJ L 316, 16.11.2006, p. 12.

**▼B**

Kyoto Protocol shall be displayed from 15 January onwards of year (X+1);

- (h) the total quantity of ERUs, CERs, AAUs and RMUs cancelled in year X following determination by the compliance committee under the Kyoto Protocol that the Member State is not in compliance with its commitment under Article 3, paragraph 1 of the Kyoto Protocol shall be displayed from 15 January onwards of year (X+1);
  - (i) the total quantity of other ERUs, CERs, AAUs and RMUs, or allowances, cancelled in year X and the reference to the Article pursuant to which these Kyoto units or allowances were cancelled under this Regulation shall be displayed from 15 January onwards of year (X+1);
  - (j) the total quantity of ERUs, CERs, AAUs, RMUs and allowances retired in year X shall be displayed from 15 January onwards of year (X+1);
  - (k) the total quantity of ERUs, CERs, AAUs carried over in year X from the previous commitment period shall be displayed from 15 January onwards of year (X+1);
  - (l) the total quantity of allowances from the previous commitment period cancelled and replaced in year X shall be displayed from 15 May onwards of year X;
  - (m) current holdings of ERUs, CERs, AAUs and RMUs in each account (person holding, operator holding, Party holding, cancellation or retirement) on 31 December of year X shall be displayed from 15 January onwards of year (X+5).
8. The list of persons authorised by the Member State to hold ERUs, CERs, AAUs and/or RMUs under its responsibility shall be displayed in the week after such authorisations have been given, and shall be updated on a weekly basis.
9. The total number of CERs and ERUs which operators are allowed to use for each period pursuant to Article 11a(1) of Directive 2003/87/EC shall be displayed in accordance with Article 30(3) of Directive 2003/87/EC.
10. The commitment period reserve, calculated in accordance with Decision 18/CP.7 of the Conference of the Parties to the UNFCCC as 90 % of the Member State's assigned amount or 100 % of five times its most recently reviewed inventory, whichever is lowest, and the number of Kyoto units by which the Member State is exceeding, and therefore in compliance with, its commitment period reserve shall be displayed on request.

**Publicly available information from the Community independent transaction log**

11. The Central Administrator shall display and update the information in paragraph 12 in respect of the registry system on the public area of the Community independent transaction log's web site, in accordance with the specified timing.
12. The following information for each completed transaction relevant for the registries system for year X shall be displayed from 15 January onwards of year (X+5):
- (a) The Central Administrator shall make available on the public area of the Community independent transaction log's website the following information:
  - (b) account identification code of the acquiring account: the code assigned to the account comprising the elements set out in Annex VI;
  - (c) account holder name of the transferring account: the holder of the account (person, operator, Commission, Member State);
  - (d) account holder name of the acquiring account: the holder of the account (person, operator, Commission, Member State);
  - (e) allowances or Kyoto units involved in the transaction by unit identification code comprising the elements set out in Annex VI;
  - (f) transaction identification code: the code assigned to the transaction comprising the elements set out in Annex VI;
  - (g) date and time at which the transaction was completed (in Greenwich Mean Time);

**▼B**

- (h) process type: the categorisation of a process comprising the elements set out in Annex VII.

**▼M2**

12a. The Central Administrator shall make available on the public area of the Community independent transaction log's website the following information:

- (a) from 30 April onwards of year (X+1) information indicating the percentage share of allowances surrendered in each Member State for year X that were not transferred prior to their surrender;
- (b) a single number indicating the total number of allowances, ERUs, CERs held in all registries in all operator and personal holding accounts on the previous day.

**▼B****Information from each registry to be made available to account holders**

- 13. Each registry administrator shall display and update the information in paragraph 14 in respect of its registry on the secure area of that registry's web site, in accordance with the specified timing.
- 14. The following elements for each account, by unit identification code comprising the elements set out in Annex VI, shall be displayed on the account holder's request to that account holder only:
  - (a) current holdings of allowances or Kyoto units;
  - (b) list of proposed transactions initiated by that account holder, detailing for each proposed transaction the elements in paragraph 12(a) to (f), the date and time at which the transaction was proposed (in Greenwich Mean Time), the current status of that proposed transaction and any response codes returned consequent to the checks made pursuant to Annex IX;
  - (c) list of allowances or Kyoto units acquired by that account as a result of completed transactions, detailing for each transaction the elements in paragraph 12(a) to (g);
  - (d) list of allowances or Kyoto units transferred out of that account as a result of completed transactions, detailing for each transaction the elements in paragraph 12(a) to (g).