

CORRIGENDA

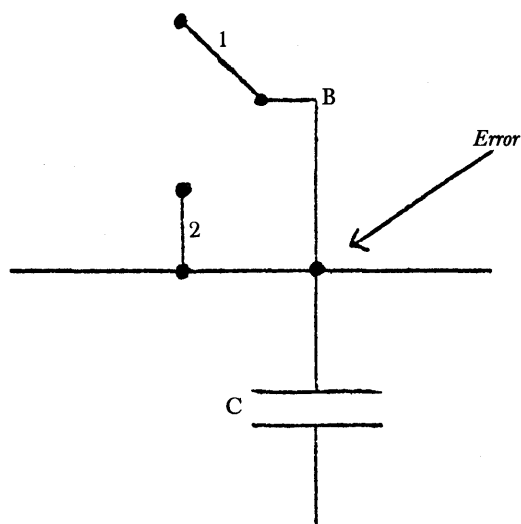
Corrigendum to Council Directive 76/889/EEC of 4 November 1976 on the approximation of the laws of the Member States relating to radio interference caused by electrical household appliances, portable tools and similar equipment

(Official Journal of the European Communities, No L 336 of 4 December 1976)

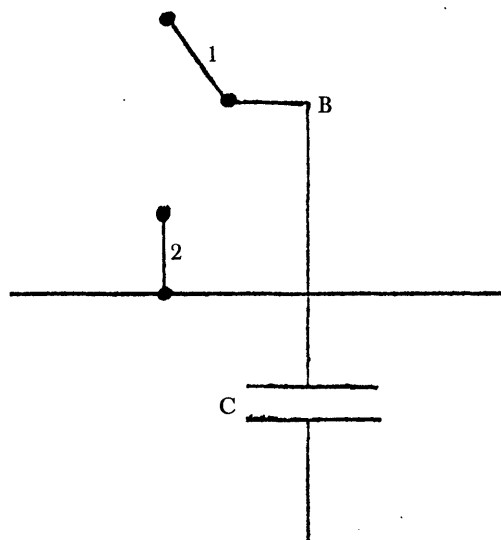
Page 16, Figure 3:

The connection from switch B to the probe is shown incorrectly and should be amended as shown below:

incorrect arrangement



correct arrangement



Corrigendum to Council Directive 76/890/EEC of 4 November 1976 on the approximation of the laws of the Member States relating to the suppression of radio interference with regard to fluorescent lighting luminaires fitted with starters

(Official Journal of the European Communities, No L 336 of 4 December 1976)

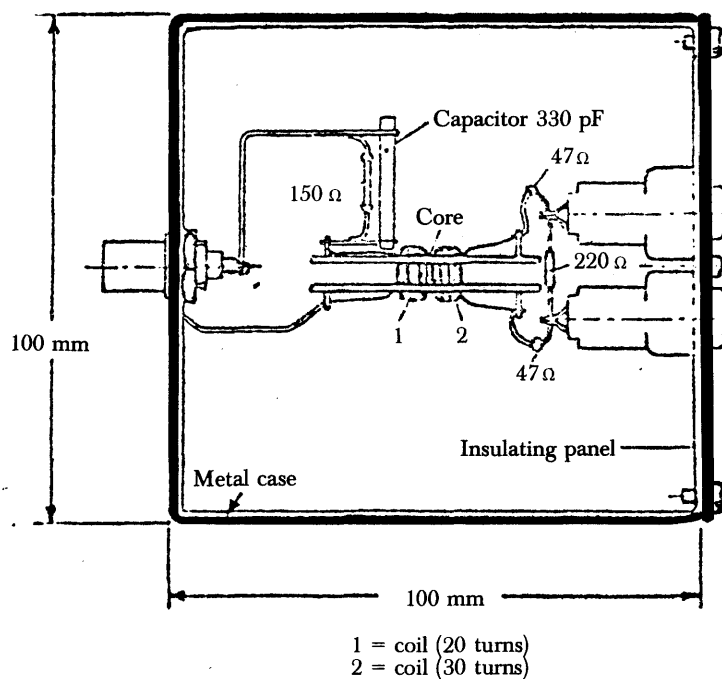
Page 25, point 4.3, seventh line:

for: ' S_n^2 is the standard deviation of the sample, where:'

read: ' S_n is the standard deviation of the sample, where:'.

Page 26, Figure 1:

The right-hand diagram of this figure was printed incorrectly and should be amended as shown below:



Page 26, Figure 2:

This figure was printed incorrectly and should be amended as shown below:

