
STATUTORY INSTRUMENTS

2008 No. 3298

HIGHWAYS, ENGLAND

**The Kent County Council (Milton Creek Bridge)
(No. 2) Scheme 2007 Confirmation Instrument 2008**

Made - - - - 23rd December 2008

Coming into force in accordance with article 1

The Secretary of State for Transport makes this Instrument in exercise of powers conferred by section 106(3) of the Highways Act 1980(1) and now vested in him(2):

1. This Instrument may be cited as “The Kent County Council (Milton Creek Bridge) (No.2) Scheme 2007 Confirmation Instrument 2008” and shall come into force on the date on which notice that it has been confirmed is first published in accordance with paragraph 1 of Schedule 2 to the Highways Act 1980.

2. The Kent County Council (Milton Creek Bridge) (No.2) Scheme 2007 (“the Scheme”) is hereby confirmed without modifications.

3. The Scheme as confirmed is set out in the Schedule hereto (including the plans) and copies of the Scheme with its accompanying plans are deposited at the offices of the Department for Transport, Floor 13 (IMD), Ashdown House, St Leonards on Sea, Hastings, East Sussex, TN37 7GA, and at the offices of Kent County Council at Sessions House, County Hall, Maidstone, Kent ME14 1XQ.

Signed by authority of the Secretary of State for Transport,

23rd December 2008

J Blackie
Regional Director Government Office for the
North East

(1) 1980 c. 66.
(2) S.I.1981/238

Status: This is the original version (as it was originally made). This item of legislation is currently only available in its original format.

THE SCHEDULE

The Kent County Council (Milton Creek Bridge) (No.2) Scheme 2007

The Kent County Council (hereinafter referred to as “the Council”) make this Scheme in exercise of their powers under section 106(3) of the Highways Act 1980 and of all other powers enabling them in that behalf:–

1. The Council are authorised to construct over the navigable waters of Milton Creek (The Swale) the Bridge specified in the Schedule to this Scheme as part of the highway which they are proposing to construct from the roundabout joining Swale Way and Ridham Avenue, Kemsley, in a generally south easterly direction to the roundabout joining Castle Road and Swale Way, Sittingbourne, in the Borough of Swale in the County of Kent.

2. This Scheme may be cited as “The Kent County Council (Milton Creek Bridge) (No.2) Scheme 2007”.

Given under the common seal of the Council on the 20th day of December 2007.

The COMMON SEAL of the COUNCIL was hereunto affixed in the presence of:–

M Rummins

Authorised Signatory

THE SCHEDULE TO THE SCHEME

Plans and Specifications of the Milton Creek Bridge

The location and general design of the Bridge are shown on the plans numbered 2947/OR/1 Revision A and 2947/OR/2 Revision A respectively, annexed hereto.

POINTS OF COMMENCEMENT AND TERMINATION

From a point on the west bank of Milton Creek at grid reference 591964 E 165219 N on Ordnance Survey Sheet TQ96, 360 metres north west of the roundabout joining Castle Road and Swale Way, Sittingbourne.

To a point on the east bank of Milton Creek at grid reference 592047 E 165162 N on Ordnance Survey Sheet TQ96, 260 metres north west of the roundabout joining Castle Road and Swale Way, Sittingbourne.

SPANS

An overall span of 100.65 metres comprising a main span of 39.95 metres and two approach spans of 30.35 metres each.

HEADWAY

A minimum headway of 4.2 metres above the Mean High Water Spring tide level (MHWS) of 2.8 metres AOD over a central navigation channel of 15 metres minimum width.

WATERWAY

A minimum clear navigable waterway of 34 metres.

Status: *This is the original version (as it was originally made). This item of legislation is currently only available in its original format.*

OVERALL DIMENSIONS

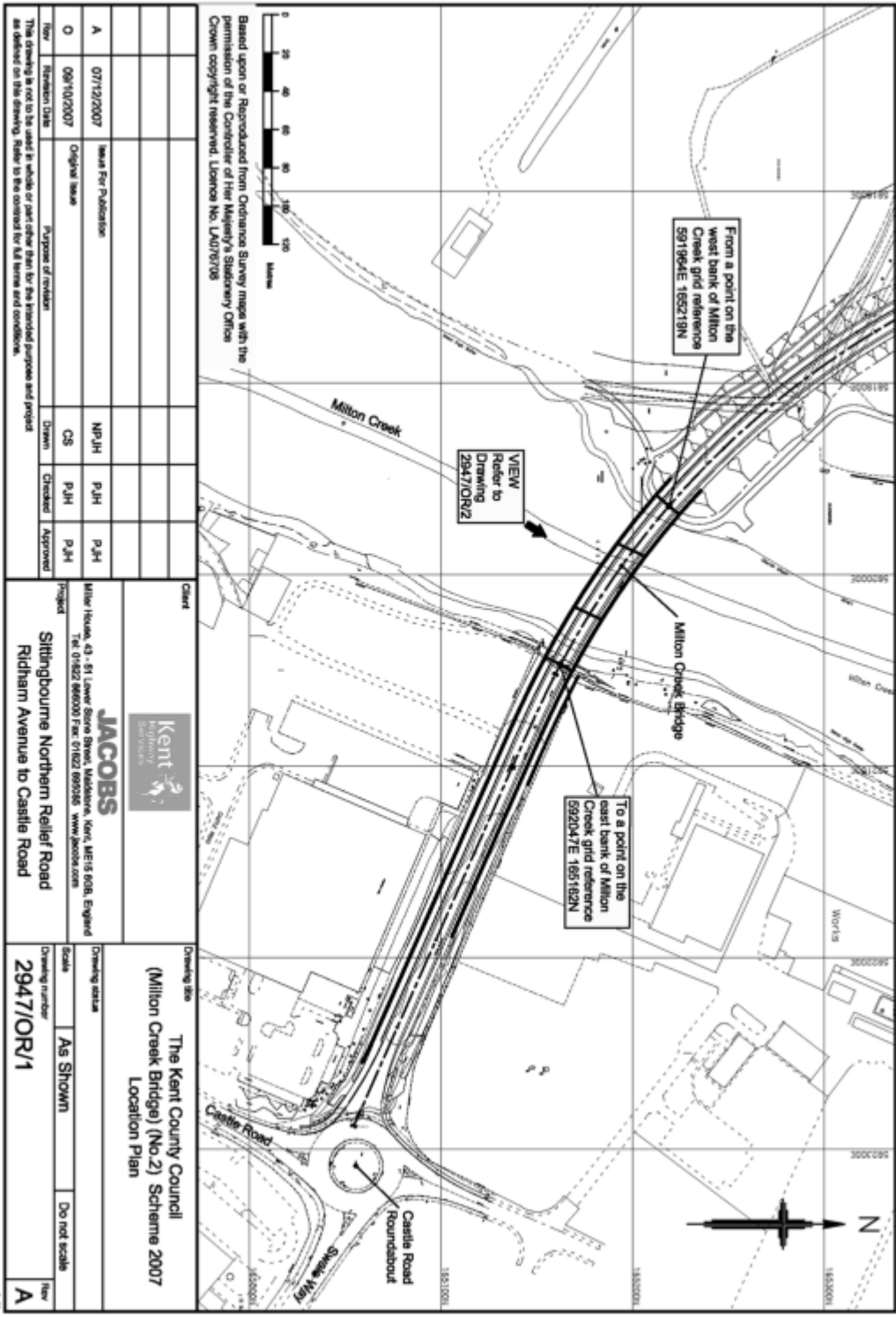
The bridge will be 16.3 metres wide and will carry a 7.3 metre wide single carriageway with a 1.0 metre wide hard strip on each side. There will be a 4.0 metre wide combined footway/cycleway on the southern side and a 2.0 metre wide paved verge on the northern side. There will be a 0.5 metre wide parapet plinth on each side. The bridge will have an overall length of 123.3 metres.

EXPLANATORY NOTE

(This note is not part of the Instrument)

This Instrument confirms a Scheme to construct over the navigable waters of Milton Creek a bridge as part of the highway which is to be constructed from the roundabout joining Swale Way and Ridham Avenue, Kemsley to the roundabout joining Castle Road and Swale Way, Sittingbourne, in the Borough of Swale in the County of Kent.

Status: This is the original version (as it was originally made). This item of legislation is currently only available in its original format.



Revision	Date	Drawn	Checked	Approved
A	07/12/2007	NPJH	PJH	PJH
O	09/10/2007	CS	PJH	PJH

Client: **JACOBS**
 Kent
 Milton House, 43 - 51 Lower Stone Street, Maidstone, Kent, ME15 6DB, England
 Tel: 01622 866000 Fax: 01622 869288 www.jacobs.com

Drawing title: **The Kent County Council
 (Milton Creek Bridge) (No 2) Scheme 2007
 Location Plan**

Drawing status: **As Shown**

Drawing number: **2947/OR/1**

Do not scale

Rev: **A**

All

Status: This is the original version (as it was originally made). This item of legislation is currently only available in its original format.

