
WELSH STATUTORY INSTRUMENTS

2010 No. 1503 (W.137)

LOCAL GOVERNMENT, WALES

The Blaenau Gwent (Communities) Order 2010

Made - - - - 21 May 2010

Coming into force in accordance with article 1(2) to (4)

The Local Government Boundary Commission for Wales submitted to the Welsh Ministers, in accordance with sections 54(1) and 58(1) of the Local Government Act 1972⁽¹⁾, a report dated September 2009 on its review of, and proposals for, the community boundaries in the County Borough of Blaenau Gwent.

The Welsh Ministers have decided to give effect to the Commission's proposals without modification.

More than six weeks have elapsed since these proposals were submitted to the Welsh Ministers.

The Welsh Ministers make the following Order in exercise of the powers conferred upon the Secretary of State by section 58(2) of the Local Government Act 1972 and now vested in them so far as exercisable in relation to Wales⁽²⁾:

Title and commencement

1.—(1) The title of this Order is The Blaenau Gwent (Communities) Order 2010.

(2) For any purpose set out in regulation 4(1) of the Regulations this Order comes into operation on 1 June 2010.

(3) For the purposes of calculating any council tax payable in respect of a dwelling in an area which under this Order is transferred from one community to another, the transfer is to be regarded as taking place on 1 April 2011.

(4) For all other purposes this Order comes into force on 1 December 2010, which is the appointed day for the purposes of the Regulations.

Interpretation

2. In this Order—

(1) 1972 c. 70.

(2) The powers of the Secretary of State were transferred to the National Assembly for Wales by the National Assembly for Wales (Transfer of Functions) Order 1999 (S.I. 1999/672) and are now vested in the Welsh Ministers by virtue of paragraph 30 of Schedule 11 to the Government of Wales Act 2006 (c. 32).

“existing” (*“presennol”*), in relation to a local government or electoral area, means that area as it exists immediately before the appointed day;

“Map A” (*“Map A”*), “Map B” (*“Map B”*), “Map C” (*“Map C”*), “Map D” (*“Map D”*), “Map E” (*“Map E”*), “Map F” (*“Map F”*), “Map G” (*“Map G”*), “Map H” (*“Map H”*), “Map I” (*“Map I”*), “Map J” (*“Map J”*), “Map K” (*“Map K”*) and “Map L” (*“Map L”*) mean respectively the maps marked A, B, C, D, E, F, G, H, I, J, K and L of the Blaenau Gwent (Communities) Order 2010 and deposited in accordance with regulation 5 of the Regulations;

“new” (*“newydd”*), in relation to a local government or electoral area, means that area as established by this Order;

“the Regulations” (*“y Rheoliadau”*) means the Local Government Area Changes Regulations 1976(3);

any reference to a community or an electoral division is a reference to respectively a community or an electoral division of the County Borough of Blaenau Gwent; and

where a boundary shown on a map as running along a road, railway line, footway, watercourse or similar geographical feature it is to be treated as running along the centre line of the feature.

Abertillery and Nantyglo and Blaina – change to community areas and consequential change to electoral division

3. The part of the community of Nantyglo and Blaina shown hatched on Map A—
 - (a) is transferred to the community of Abertillery;
 - (b) forms part of the Cwmtillery ward of the community of Abertillery; and
 - (c) forms part of the electoral division of Cwmtillery.

Abolition of Beaufort community and creation of new communities – Badminton, Beaufort and Rassau

- 4.—(1) The existing community of Beaufort is abolished.
- (2) There are constituted three new communities named Badminton, Beaufort and Rassau.
- (3) The area shown hatched on Map B—
 - (a) is transferred to the new community of Beaufort; and
 - (b) forms part of the electoral division of Beaufort.
- (4) The part of the electoral division of Beaufort shown hatched on Map C forms part of the electoral division of Badminton.
- (5) The part of the electoral division of Badminton shown cross-hatched on Map C forms part of the electoral division of Beaufort.
- (6) The part of the electoral division of Badminton shown hatched on Map D forms part of the electoral division of Rassau.
- (7) The new community of Beaufort, and the electoral division of Beaufort as changed by paragraphs (3), (4) and (5), comprises the area shown hatched on Map E.
- (8) The new community of Badminton, and the electoral division of Badminton as changed by paragraphs (4), (5) and (6), comprises the area shown hatched on Map F.
- (9) The new community of Rassau, and the electoral division of Rassau as changed by paragraph (6), comprises the area shown hatched on Map G.

Brynmawr and Nantyglo and Blaina – change to community boundaries and consequential changes to electoral divisions

- 5.—(1) The part of the community of Brynmawr shown hatched on Map H—
- (a) is transferred to the community of Nantyglo and Blaina;
 - (b) forms part of the Nantyglo ward of the community of Nantyglo and Blaina; and
 - (c) forms part of the electoral division of Nantyglo.
- (2) The part of the community of Nantyglo and Blaina shown cross-hatched on Map H—
- (a) is transferred to the community of Brynmawr;
 - (b) forms part of the Brynmawr South ward of the community of Brynmawr; and
 - (c) forms part of the electoral division of Brynmawr.

Abolition of the community of Ebbw Vale and creation of new communities – Ebbw Vale North and Ebbw Vale South

- 6.—(1) The existing community of Ebbw Vale is abolished.
- (2) There are constituted two new communities named Ebbw Vale North and Ebbw Vale South.
- (3) The area shown hatched on Map I—
- (a) is transferred to the community of Cwm; and
 - (b) forms part of the electoral division of Cwm.
- (4) The part of the electoral division of Ebbw Vale North shown hatched on Map J forms part of the electoral division of Ebbw Vale South.
- (5) The part of the electoral division of Ebbw Vale South shown cross-hatched on Map J forms part of the electoral division of Ebbw Vale North.
- (6) The new community of Ebbw Vale North, and the electoral division of Ebbw Vale North as changed by paragraphs (4) and (5), comprises the area shown hatched on Map K.
- (7) The new community of Ebbw Vale South, and the electoral division of Ebbw Vale South as changed by paragraphs (3), (4) and (5), comprises the area shown hatched on Map L.

21 May 2010

Carl Sargeant
Minister for Social Justice and Local
Government, one of the Welsh Ministers

Status: This is the original version (as it was originally made). This item of legislation is currently only available in its original format.

EXPLANATORY NOTE

(This note is not part of the Order)

This Order, made in accordance with section 58(2) of the Local Government Act 1972, gives effect to proposals by the Local Government Boundary Commission for Wales (“the Commission”) which reported in September 2009 on its review of the community boundaries in the County Borough of Blaenau Gwent. The Commission’s report recommended changes to the existing boundaries of communities in the County Borough of Blaenau Gwent. This Order gives effect to the Commission’s recommendations without modification.

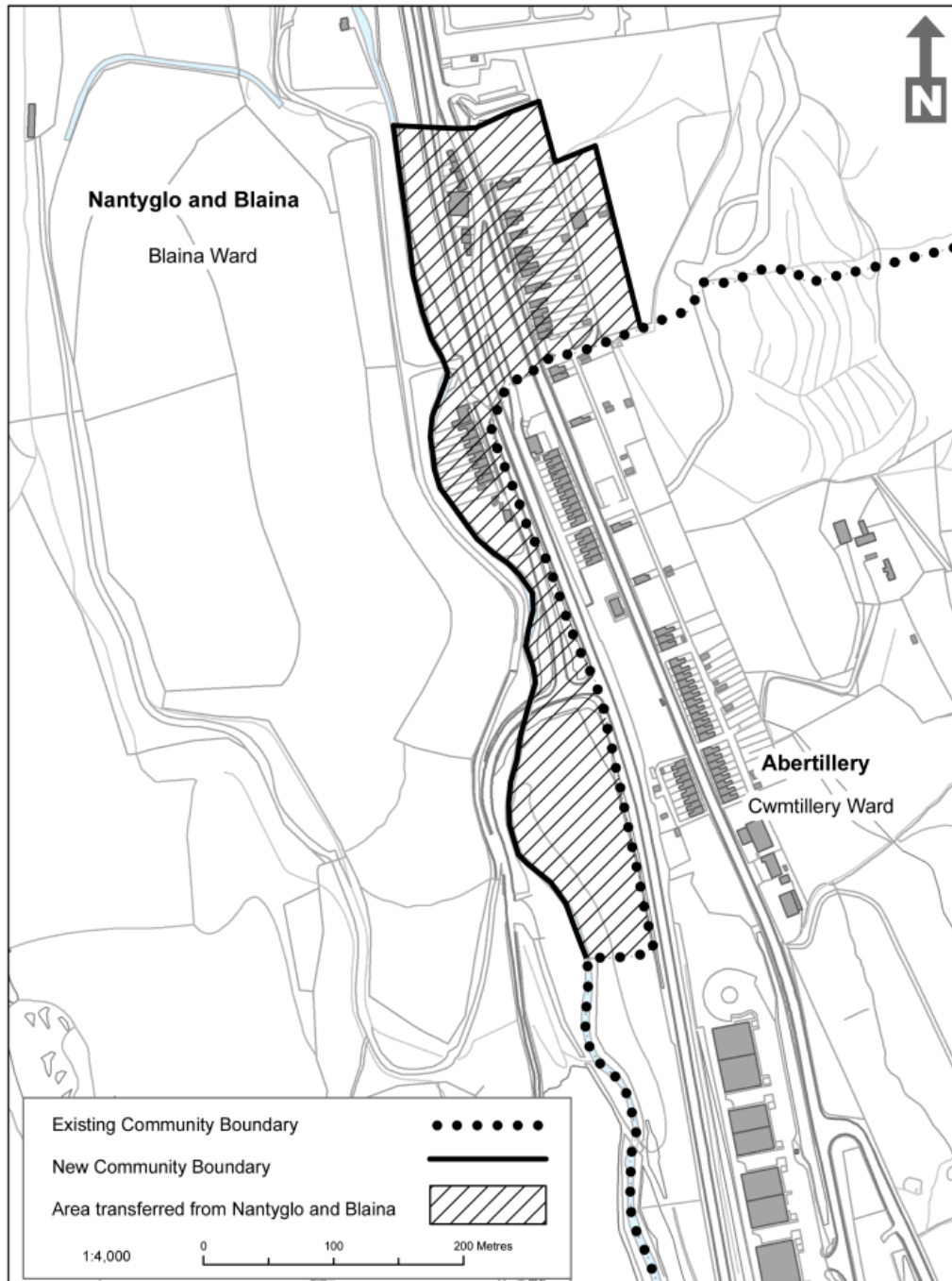
The effect of this Order is that there are changes to a number of community areas and some consequential changes in electoral arrangements. Part of the community of Nantyglo and Blaina is transferred to community of Abertillery. Changes are made to the boundary between the communities of Brynmawr and Nantyglo and Blaina. The existing community of Beaufort is abolished and the area divided into three new communities, Badminton, Beaufort and Rassau. These areas constitute the new electoral divisions of Badminton, Beaufort and Rassau. The existing community of Ebbw Vale is abolished and the area divided into two new communities, Ebbw Vale North and Ebbw Vale South, which constitute the new electoral divisions of Ebbw Vale North and Ebbw Vale South.

Prints of the maps showing the boundaries are deposited and may be inspected during normal office hours at the offices of Blaenau Gwent County Borough Council, Municipal Offices, Civic Centre, Ebbw Vale NP23 6XB and at the offices of the Welsh Assembly Government at Cathays Park, Cardiff CF10 3NQ (Local Government Policy Division).

The Local Government Area Changes Regulations 1976 (S.I. No [1976/246](#)) referred to in article 2 of this Order contain incidental, consequential, transitional and supplementary provisions about the effect and implementation of orders such as this.

Status: This is the original version (as it was originally made). This item of legislation is currently only available in its original format.

Map A of the Blaenau Gwent (Communities) Order 2010



This map is based upon the Ordnance Survey material with the permission of the Ordnance Survey on behalf of The Controller of Her Majesty's Stationery Office, © Crown copyright 2010. Unauthorised reproduction infringes Crown copyright and may lead to prosecution or civil proceedings. Welsh Assembly Government. Licence Number: 100017916

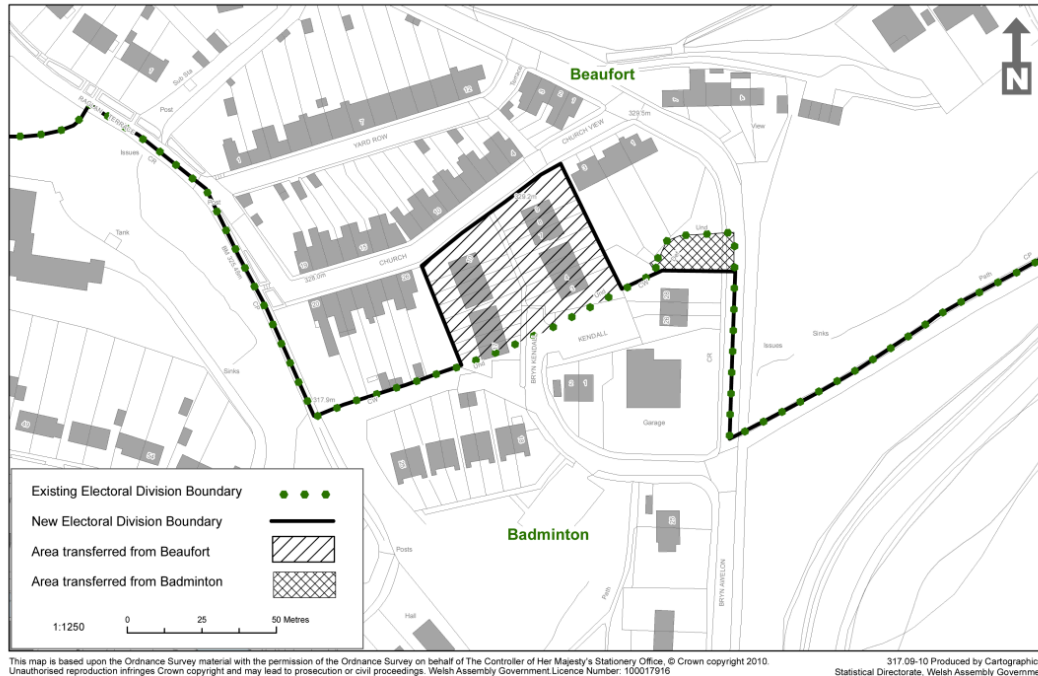
317.09-10 Produced by Cartographics, Statistical Directorate, Welsh Assembly Government

Status: This is the original version (as it was originally made). This item of legislation is currently only available in its original format.

Map B of the Blaenau Gwent (Communities) Order 2010

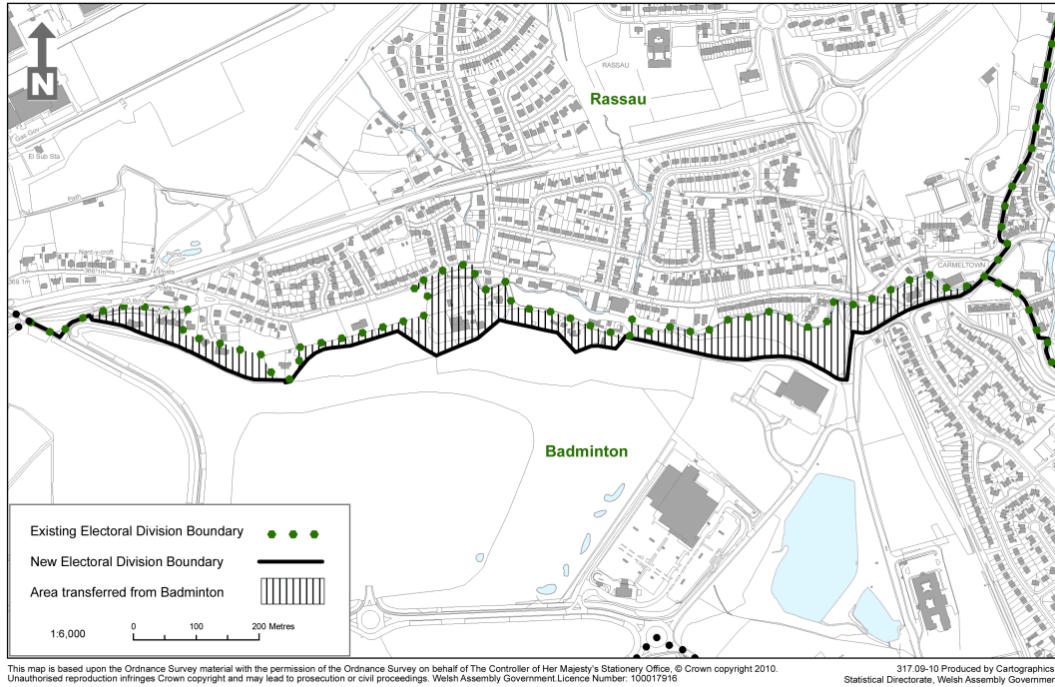


Map C of the Blaenau Gwent (Communities) Order 2010



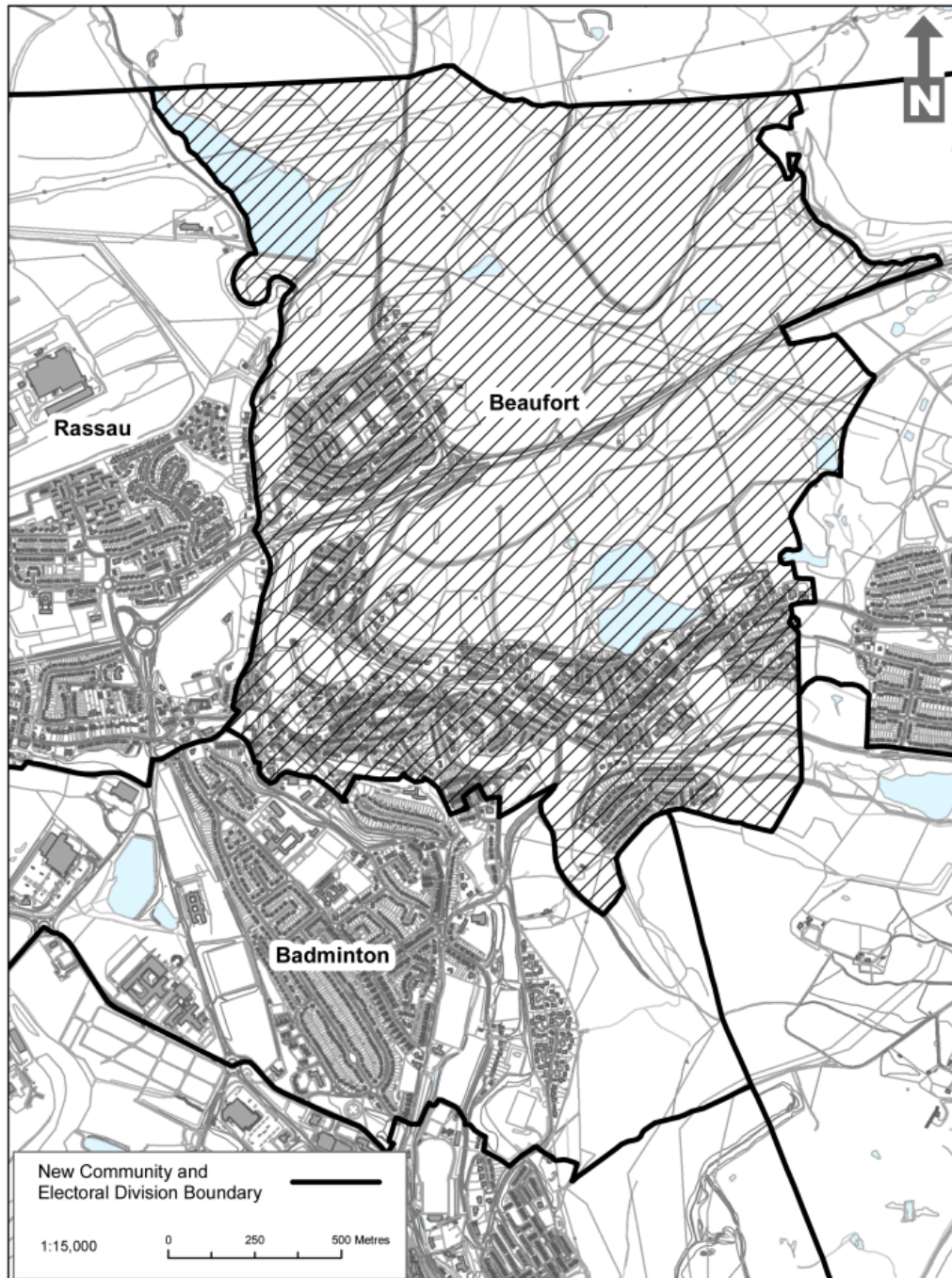
Status: This is the original version (as it was originally made). This item of legislation is currently only available in its original format.

Map D of the Blaenau Gwent (Communities) Order 2010



Status: This is the original version (as it was originally made). This item of legislation is currently only available in its original format.

Map E of the Blaenau Gwent (Communities) Order 2010

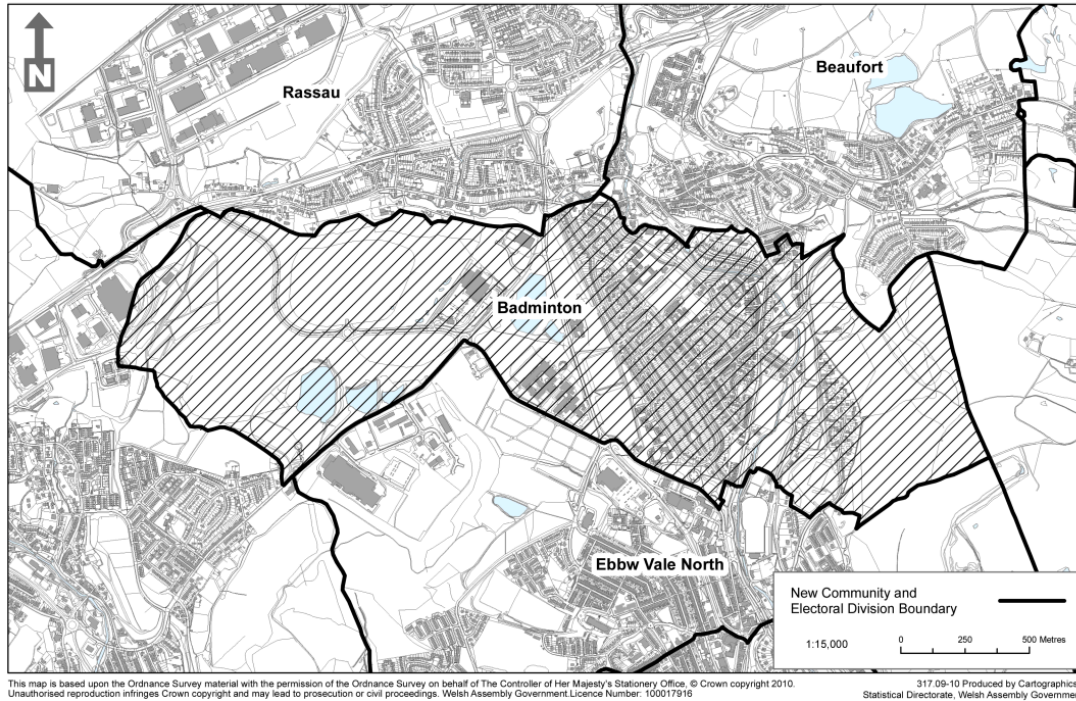


This map is based upon the Ordnance Survey material with the permission of the Ordnance Survey on behalf of The Controller of Her Majesty's Stationery Office, © Crown copyright 2010. Unauthorised reproduction infringes Crown copyright and may lead to prosecution or civil proceedings. Welsh Assembly Government. Licence Number: 100017916

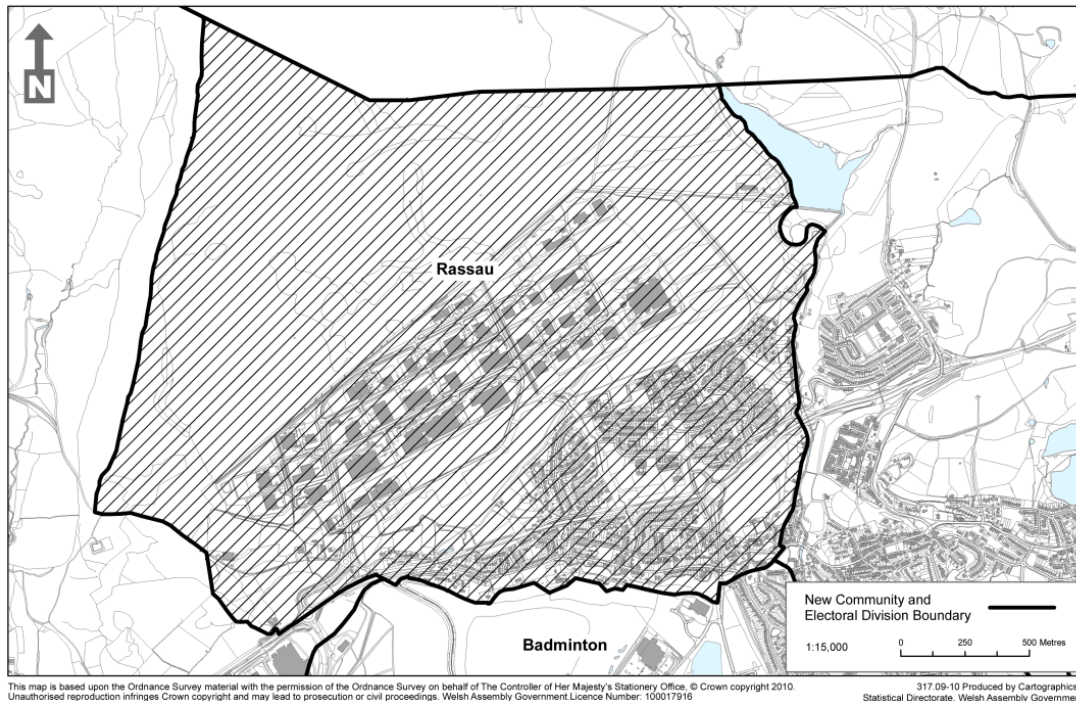
317.09-10 Produced by Cartographics, Statistical Directorate, Welsh Assembly Government

Status: This is the original version (as it was originally made). This item of legislation is currently only available in its original format.

Map F of the Blaenau Gwent (Communities) Order 2010

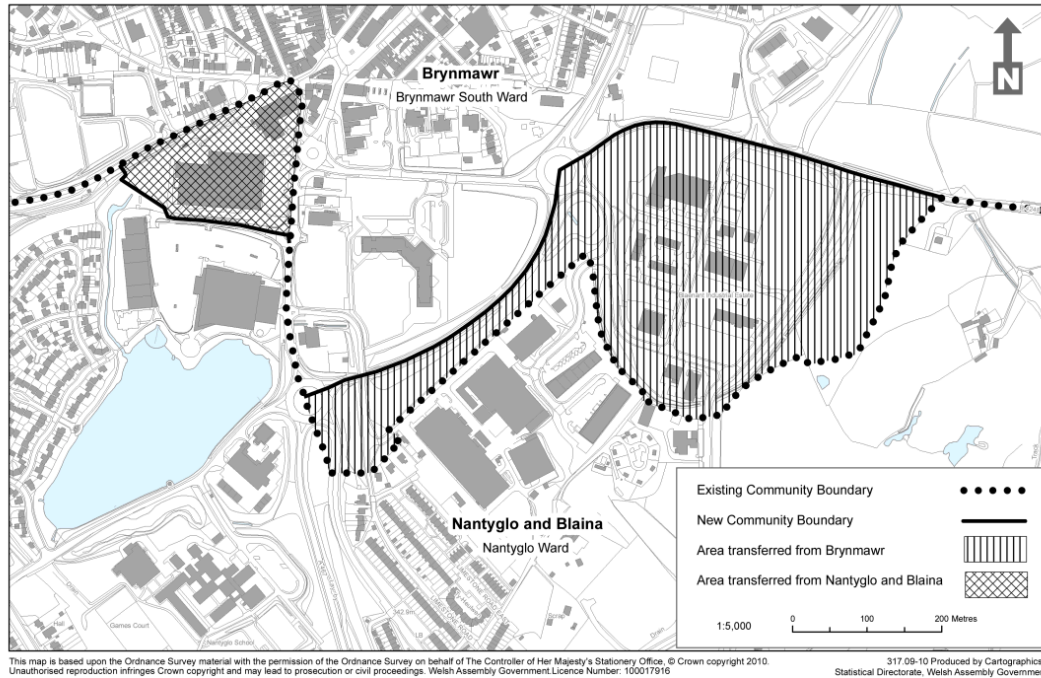


Map G of the Blaenau Gwent (Communities) Order 2010



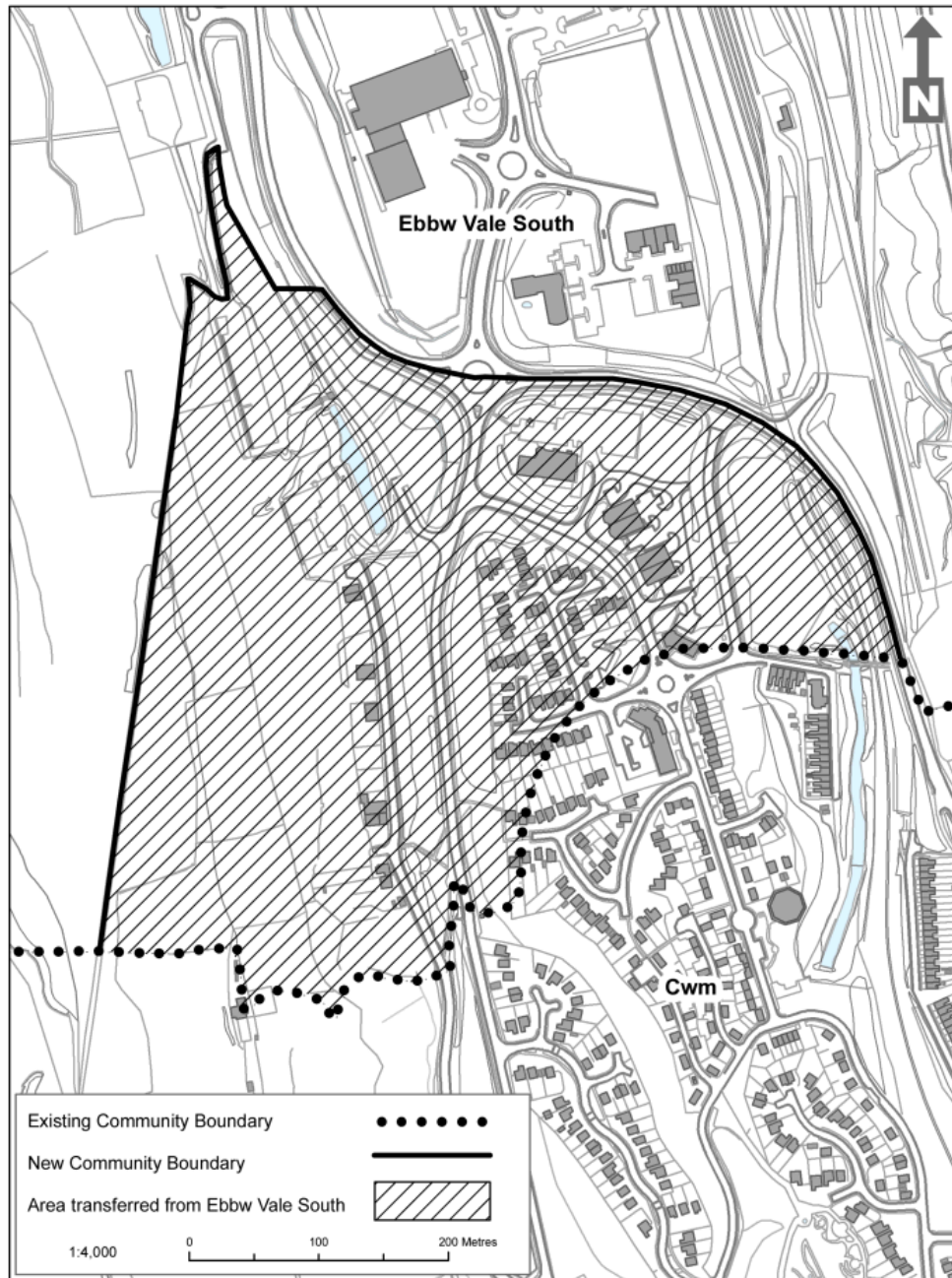
Status: This is the original version (as it was originally made). This item of legislation is currently only available in its original format.

Map H of the Blaenau Gwent (Communities) Order 2010



Status: This is the original version (as it was originally made). This item of legislation is currently only available in its original format.

Map I of the Blaenau Gwent (Communities) Order 2010

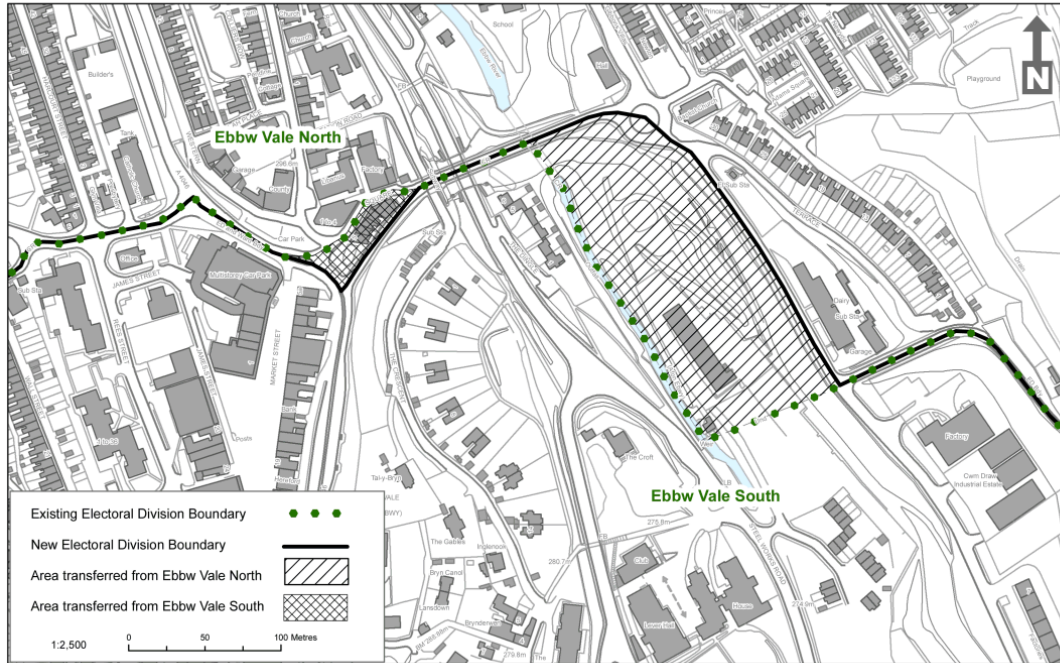


This map is based upon the Ordnance Survey material with the permission of the Ordnance Survey on behalf of The Controller of Her Majesty's Stationary Office, © Crown copyright 2010. Unauthorised reproduction infringes Crown copyright and may lead to prosecution or civil proceedings. Welsh Assembly Government. Licence Number: 100017916

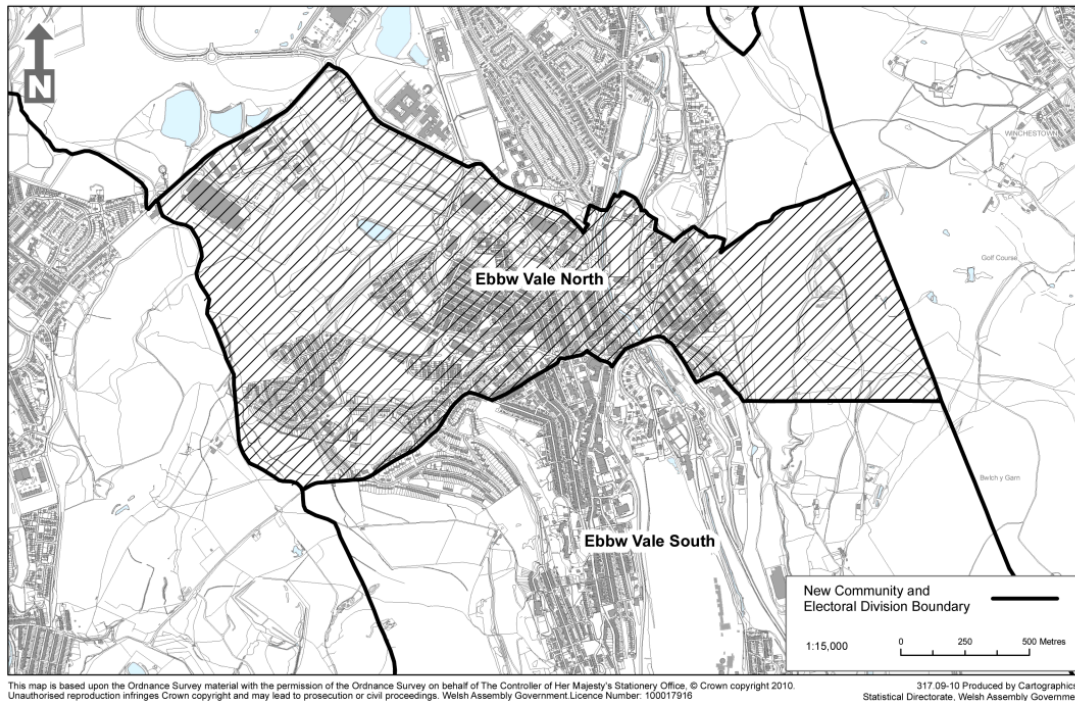
317.09-10 Produced by Cartographics, Statistical Directorate, Welsh Assembly Government

Status: This is the original version (as it was originally made). This item of legislation is currently only available in its original format.

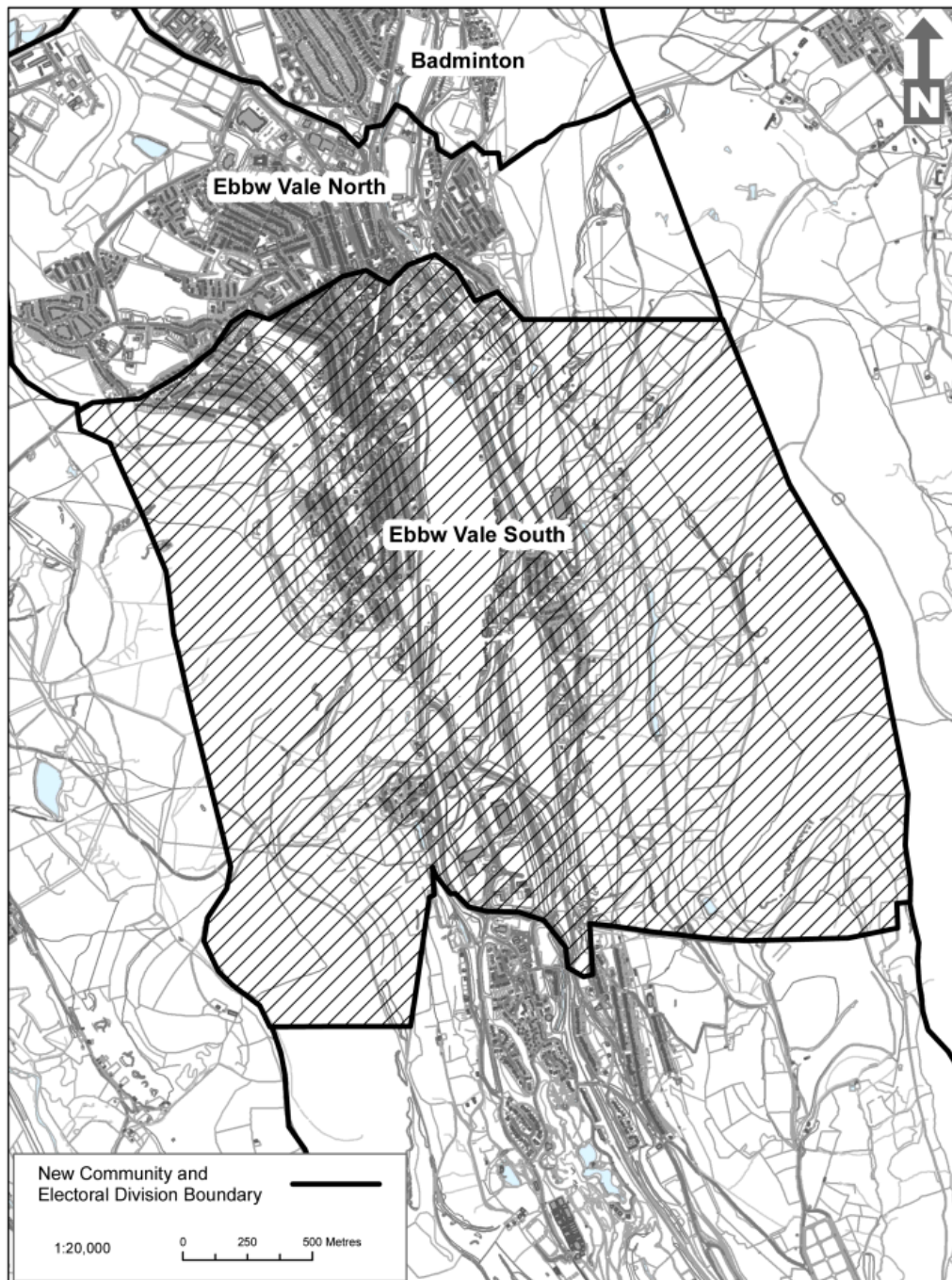
Map J of the Blaenau Gwent (Communities) Order 2010



Map K of the Blaenau Gwent (Communities) Order 2010



Map L of the Blaenau Gwent (Communities) Order 2010



This map is based upon the Ordnance Survey material with the permission of the Ordnance Survey on behalf of The Controller of Her Majesty's Stationery Office, © Crown copyright 2010. Unauthorised reproduction infringes Crown copyright and may lead to prosecution or civil proceedings. Welsh Assembly Government. Licence Number: 100017916

317.09-10 Produced by Cartographics, Statistical Directorate, Welsh Assembly Government