
WELSH STATUTORY INSTRUMENTS

2009 No. 2717 (W.229)

LOCAL GOVERNMENT, WALES

The Conwy (Llandudno and Conwy) Order 2009

*Made - - - - 4 October 2009
Coming into force in accordance with article 1(2) and
(3)*

The Local Government Boundary Commission for Wales has, in accordance with sections 54(1) and 58(1) of the Local Government Act 1972⁽¹⁾, submitted to the Welsh Ministers a report dated February 2009 on its review of, and proposals for, community boundaries within part of the County Borough of Conwy.

The Welsh Ministers have decided to give effect to those proposals without modification.

More than six weeks have elapsed since those proposals were submitted to the Welsh Ministers.

The Welsh Ministers make the following Order in exercise of the powers conferred on the Secretary of State by section 58(2) of the Local Government Act 1972 and now vested in them so far as exercisable in relation to Wales⁽²⁾:

Title and commencement

1.—(1) The title of this Order is The Conwy (Llandudno and Conwy) Order 2009.

(2) For any purpose set out in regulation 4(1) of the Regulations, this Order comes into force on 1 December 2009.

(3) For all other purposes, this Order comes into force on 1 April 2010, which is the appointed day for the purposes of the Regulations.

Interpretation

2. In this Order—

“Map A” (“*Map A*”), “Map B” (“*Map B*”), “Map C” (“*Map C*”) and “Map D” (“*Map D*”) mean respectively the maps marked A, B, C and D of the Conwy (Llandudno and Conwy) Order 2009 and deposited in accordance with regulation 5 of the Regulations;

(1) 1972 c. 70.

(2) The powers of the Secretary of State were transferred to the National Assembly for Wales by the National Assembly for Wales (Transfer of Functions) Order 1999 (S.I.1999/672) and are now vested in the Welsh Ministers by virtue of paragraph 30 of Schedule 11 to the Government of Wales Act 2006 (2006 c. 32).

“the Regulations” (“*y Rheoliadau*”) means the Local Government Area Changes Regulations 1976(3); and

any reference to an electoral division is a reference to an electoral division of the County Borough of Conwy.

3. Changes are made in the local government area of the County Borough of Conwy in accordance with the following provisions of this Order.

Changes in community areas and consequential changes to electoral arrangements

4. The part of the community of Conwy shown as the hatched area on Map A—
 - (a) is transferred to the community of Llandudno;
 - (b) forms part of the Tudno ward of the community of Llandudno; and
 - (c) forms part of the electoral division of Tudno.
5. The part of the community of Conwy shown as cross-hatched area “a” on Map B—
 - (a) is transferred to the community of Llandudno;
 - (b) forms part of the Craig-y-Don ward of the community of Llandudno; and
 - (c) forms part of the electoral division of Craig-y-Don.
6. The part of the Penrhyn ward of the community of Llandudno shown as hatched area “b” on Map B—
 - (a) is transferred to the Craig-y-Don ward of the community of Llandudno; and
 - (b) forms part of the electoral division of Craig-y-Don.
7. The part of the community of Conwy shown as hatched area “c” on Map B—
 - (a) is transferred to the community of Llandudno;
 - (b) forms part of the Penrhyn ward of the community of Llandudno; and
 - (c) forms part of the electoral division of Penrhyn.
8. The part of the community of Llandudno shown as cross-hatched area “a” on Map C—
 - (a) is transferred to the community of Conwy;
 - (b) forms part of the Deganwy ward of the community of Conwy; and
 - (c) forms part of the electoral division of Deganwy.
9. The part of the community of Llandudno shown as hatched area “b” on Map C—
 - (a) is transferred to the community of Conwy;
 - (b) forms part of the Marl ward of the community of Conwy; and
 - (c) forms part of the electoral division of Marl.
10. The part of the Marl ward of the community of Conwy shown as hatched area “c” on Map C—
 - (a) is transferred to the Deganwy ward of the community of Conwy; and
 - (b) forms part of the electoral division of Deganwy.
11. The part of the community of Llandudno shown as hatched area “a” on Map D—
 - (a) is transferred to the community of Conwy;
 - (b) forms part of the Pensarn ward of the community of Conwy; and

- (c) forms part of the electoral division of Pensarn.
- 12. The part of the community of Conwy shown as hatched area “b” on Map D—
 - (a) is transferred to the community of Llandudno;
 - (b) forms part of the Penrhyn ward of the community of Llandudno; and
 - (c) forms part of the electoral division of Penrhyn.

4 October 2009

Brian Gibbons
Minister for Social Justice and Local
Government, one of the Welsh Ministers

Status: This is the original version (as it was originally made). This item of legislation is currently only available in its original format.

EXPLANATORY NOTE

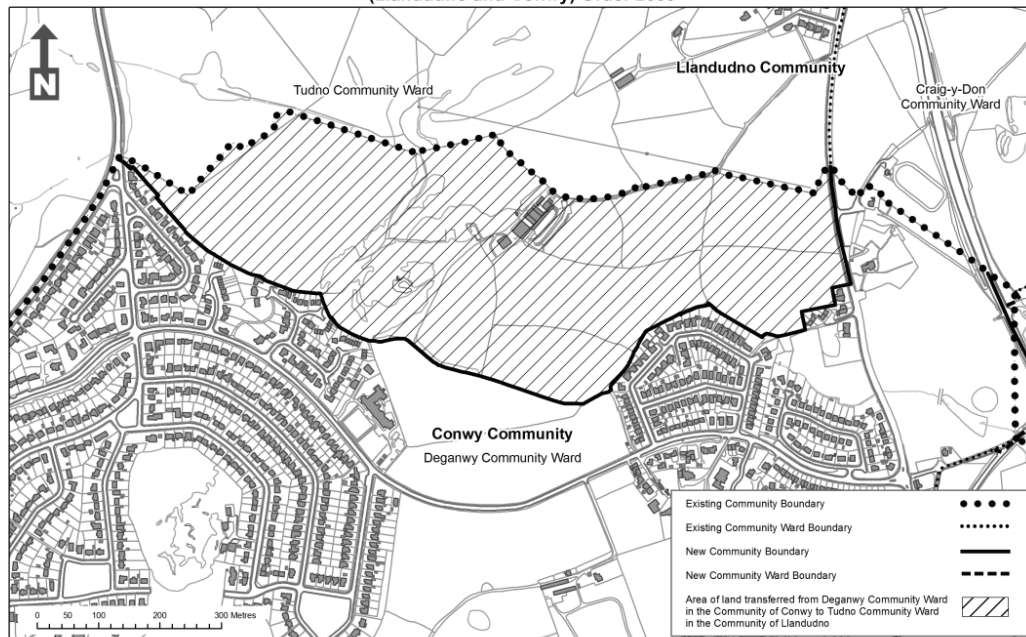
(This note is not part of the Order)

This Order is made in accordance with section 58(2) of the Local Government Act 1972. It gives effect to proposals of the Local Government Boundary Commission for Wales (“the Commission”) which reported in February 2009 on its review of community boundaries in part of the County Borough of Conwy. The Commission’s report recommended changes to the boundaries of Llandudno and Conwy communities and consequential changes to electoral arrangements. This Order gives effect to the Commission’s recommendations without modification.

Prints of the maps showing the boundaries are deposited and may be inspected during normal office hours at the offices of Conwy County Borough Council, Conwy, and at the offices of the Welsh Assembly Government (Local Government Policy Division) at Cathays Park, Cardiff CF10 3NQ.

The Local Government Area Changes Regulations 1976 referred to in article 2 of this Order contain incidental, consequential, transitional and supplementary provisions about the effect and implementation of orders such as this.

**Map A of the Conwy
(Llandudno and Conwy) Order 2009**

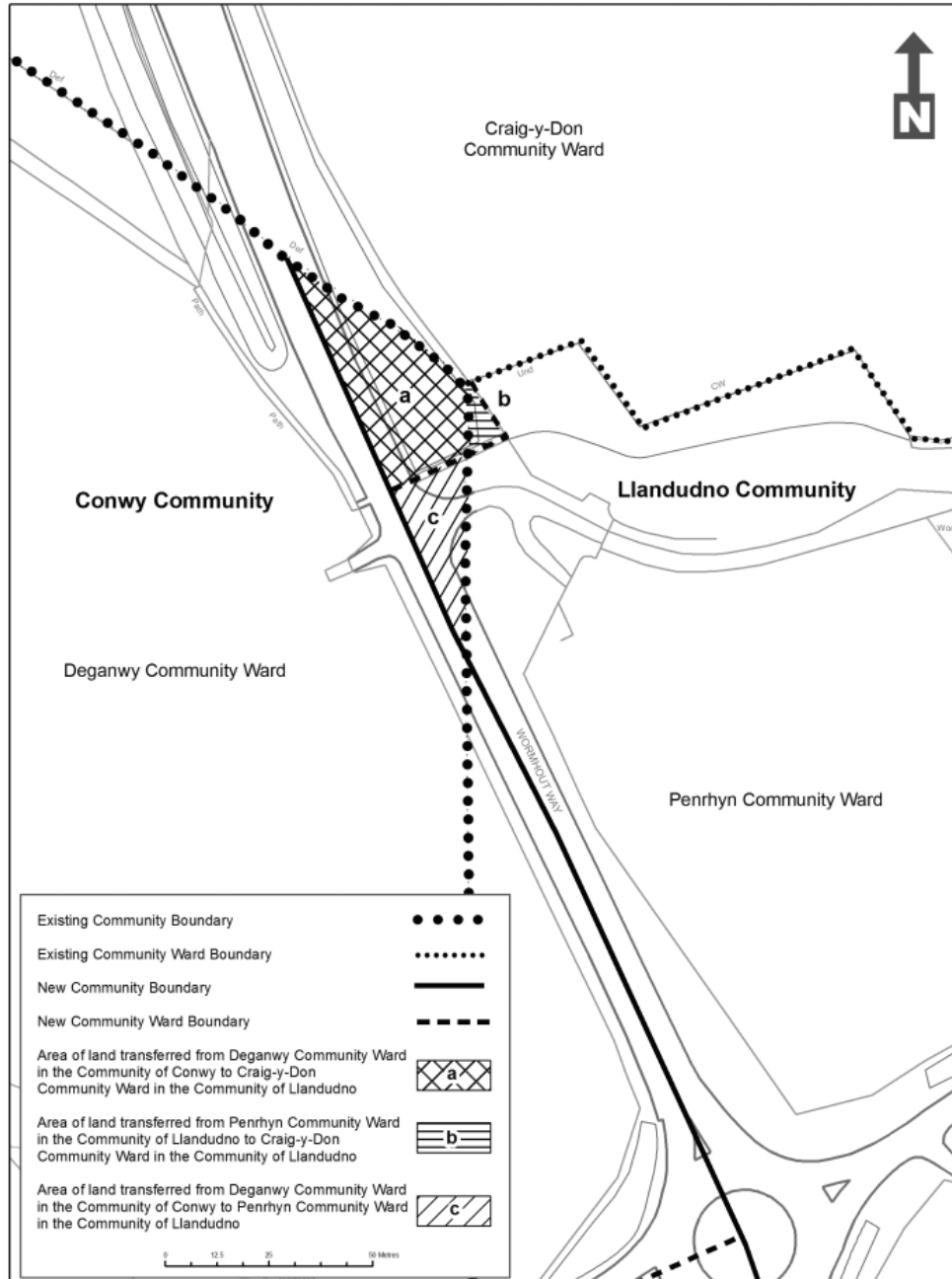


This map is based upon the Ordnance Survey material with the permission of Ordnance Survey on behalf of The Controller of Her Majesty's Stationery Office, © Crown copyright 2009. Unauthorised reproduction infringes Crown copyright and may lead to prosecution or civil proceedings. Welsh Assembly Government. Licence Number: 100017916

93.09-10 Produced by Cartographics, Statistical Directorate, Welsh Assembly Government

Status: This is the original version (as it was originally made). This item of legislation is currently only available in its original format.

Map B of the Conwy (Llandudno and Conwy) Order 2009

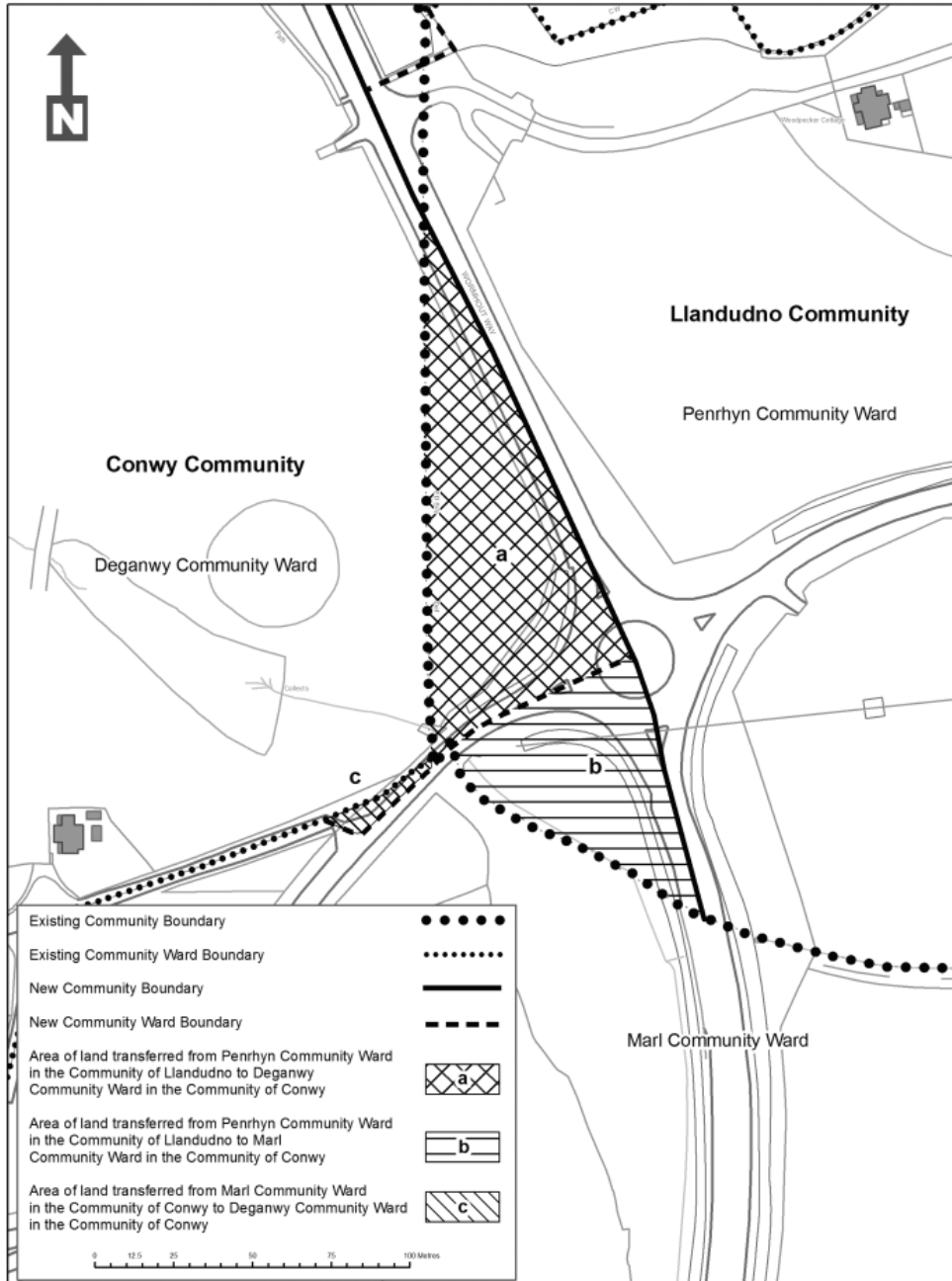


This map is based upon the Ordnance Survey material with the permission of the Ordnance Survey on behalf of The Controller of Her Majesty's Stationery Office, © Crown copyright 2009. Unauthorised reproduction infringes Crown copyright and may lead to prosecution or civil proceedings. Welsh Assembly Government. Licence Number: 100017916

93.09-10 Produced by Cartographics, Statistical Directorate, Welsh Assembly Government

Status: This is the original version (as it was originally made). This item of legislation is currently only available in its original format.

**Map C of the Conwy
(Llandudno and Conwy) Order 2009**

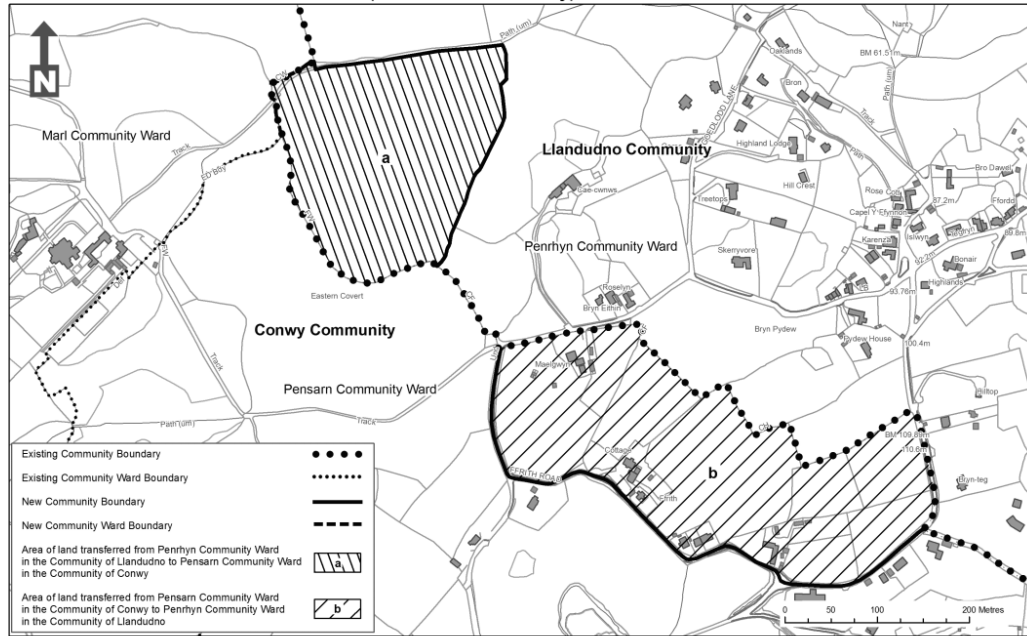


This map is based upon the Ordnance Survey material with the permission of the Ordnance Survey on behalf of The Controller of Her Majesty's Stationery Office, © Crown copyright 2009. Unauthorised reproduction infringes Crown copyright and may lead to prosecution or civil proceedings. Welsh Assembly Government. Licence Number: 100017916

93.09-10 Produced by Cartographics, Statistical Directorate, Welsh Assembly Government

Status: This is the original version (as it was originally made). This item of legislation is currently only available in its original format.

**Map D of the Conwy
(Llandudno and Conwy) Order 2009**



This map is based upon the Ordnance Survey material with the permission of Ordnance Survey on behalf of The Controller of Her Majesty's Stationery Office, © Crown copyright 2009. Unauthorised reproduction infringes Crown copyright and may lead to prosecution or civil proceedings. Welsh Assembly Government. Licence Number: 100017916

93 09-10 Produced by Cartographics, Statistical Directorate, Welsh Assembly Government