

---

STATUTORY INSTRUMENTS

---

**2021 No. 608**

**HIGHWAYS, ENGLAND**

**The Stoke-on-Trent City Council (Grange Canal Bridge) Scheme 2020 Confirmation Instrument 2021**

*Made - - - - 20th May 2021*

*Coming into force in accordance with article 1*

The Secretary of State for Transport, makes this Instrument in exercise of the powers conferred by section 106(3) of the Highways Act 1980<sup>(1)</sup>, and now vested in the Secretary of State<sup>(2)</sup>:

**1.** This Instrument may be cited as “The Stoke-on-Trent City Council (Grange Canal Bridge) Scheme 2020 Confirmation Instrument 2021” and shall come into force on the date on which notice that it has been confirmed is first published in accordance with paragraph 1 of Schedule 2 to the Highways Act 1980.

**2.** The Stoke-on-Trent City Council (Grange Canal Bridge) Scheme 2020 (“the Scheme”) is hereby confirmed.

**3.** The Scheme as confirmed is set out in the Schedule (including the plans) and copies of the Scheme with its accompanying plans are deposited at the offices of the Department for Transport, MHCLG, 1 Priory Square, Priory Street, Hastings, East Sussex, TN34 1EA and at the offices of Stoke-on-Trent City Council at the Civic Centre, Glebe Street, Stoke ST4 1HH.

Signed by authority of the Secretary of State

20th May 2021

*Simon Connick*  
A Senior Civil Servant  
in the Department for Transport

---

(1) 1980 c. 66. Section 106(3) is amended by the Infrastructure Act 2015 (c. 7), paragraph 34(2) of Schedule 1(1).  
(2) S.I. 1981/238

*Status: This is the original version (as it was originally made). This item of legislation is currently only available in its original format.*

## THE SCHEDULE

Regulation 3

### THE STOKE-ON-TRENT CITY COUNCIL (GRANGE CANAL BRIDGE) SCHEME 2020

The Stoke-on-Trent City Council (“the Council”) make this Scheme in exercise of their powers under section 106(3) of the Highways Act 1980 and all other powers enabling them in that behalf.

1. The Council are authorised to construct over the navigable waters of the Trent and Mersey Canal the bridge specified in the Schedule to this Scheme as part of the highway they are proposing to construct from the eastern roundabout off the A500 Wolstanton Junction to Festival Way in the District of Etruria in the City of Stoke-on-Trent and in Newcastle-under-Lyme in the County of Staffordshire.

2. The Scheme may be cited as the Stoke-on-Trent City Council (Grange Canal Bridge) Scheme 2020.

---

Given under the common seal of the Stoke-on-Trent  
City Council

on the 10th day of November 2020

THE COMMON SEAL of  
STOKE-ON-TRENT CITY COUNCIL  
was hereunto affixed in the presence of:

W. B

Authorised Signatory (Officer)

---

## THE SCHEDULE TO THE SCHEME

Regulation 3

### **Plans and Specifications of the Grange Canal Bridge**

The location and general design of the Bridge are shown on plans numbered 70058503/ODBO/0001 and 70058503/ODBO/0002 and marked The Stoke-on-Trent City Council (Grange Canal Bridge) Scheme 2020.

### **Points of Commencement and Termination**

The Grange Canal Bridge is 556 metres east of the mid-point of A500 Wolstanton underpass and 136 metres west of Festival Way.

### **Span**

Skew Span approximately 27 metres.

### **Headway**

Required headway 2.7 metres over towpath. Headway provided is not less than 3 metres to any part of the Canal or Towpath.

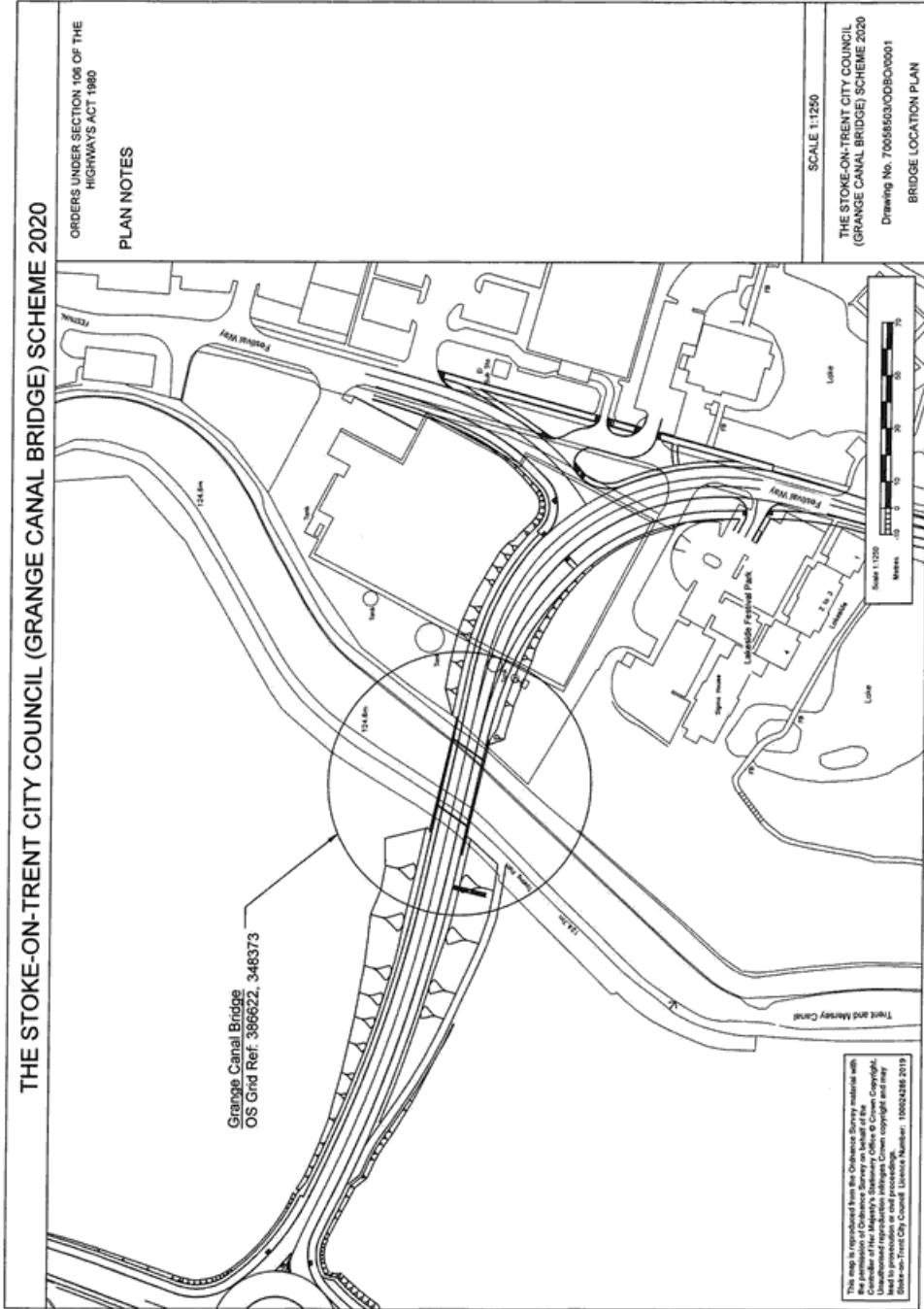
### **Waterway**

The current minimum square width of the Canal beneath the Bridge is approximately 13.5 metres.

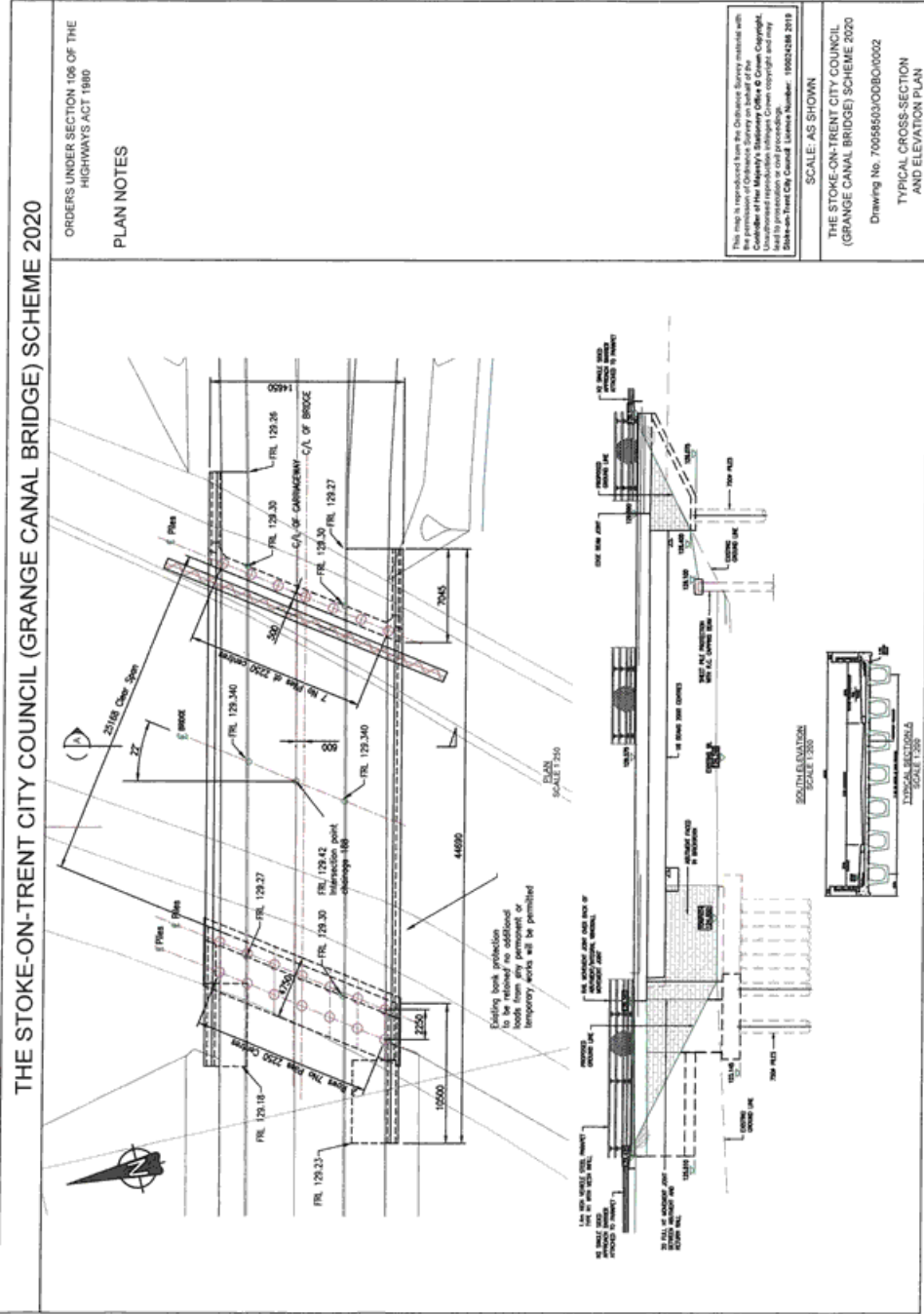
### **Overall Dimensions**

The Bridge will be 15.8 metres wide overall and will carry a 7.3 metres wide carriageway. There will be a 2.5 metres minimum wide raised hard verge on the north of the bridge and a 3.7 metres wide combined footway and cycleway on the south of the Bridge.

Status: This is the original version (as it was originally made). This item of legislation is currently only available in its original format.



**Status:** This is the original version (as it was originally made). This item of legislation is currently only available in its original format.



**Status:** *This is the original version (as it was originally made). This item of legislation is currently only available in its original format.*

---

## **EXPLANATORY NOTE**

*(This note is not part of the Instrument)*

This instrument confirms a Scheme to construct over the navigable waters of the Trent and Mersey Canal the bridge specified in the Schedule to this Scheme as part of the highway which they are proposing to construct between the eastern roundabout at the A500 Wolstanton Junction in Newcastle-under-Lyme in the County of Staffordshire to Festival Way in the District of Etruria in the City on Stoke-on-Trent.