

2021 No. 1317

HIGHWAYS, ENGLAND

The Borough Council of Calderdale (A629, Southern Section, Halifax) (Highway Improvements) (West Yorkshire Plus Transport Fund, Phase 1b) (Calder and Hebble Navigation Bridge) Scheme 2020 Confirmation Instrument 2021

Made - - - - *18th November 2021*
Coming into force - - *2nd December 2021*

The Secretary of State for Transport, makes this Instrument in exercise of the powers conferred by section 106(3) of the Highways Act 1980(a), and now vested in the Secretary of State(b):

1. This Instrument may be cited as the Borough Council of Calderdale (A629, Southern Section, Halifax) (Highway Improvements) (West Yorkshire Plus Transport Fund, Phase 1b) (Calder and Hebble Navigation Bridge) Scheme 2020 Confirmation Instrument 2021 and shall come into force on the date on which notice that it has been confirmed is first published in accordance with paragraph 1 of Schedule 2 to the Highways Act 1980.

2. The Borough Council of Calderdale (A629, Southern Section, Halifax) (Highway Improvements) (West Yorkshire Plus Transport Fund, Phase 1b) (Calder and Hebble Navigation Bridge) Scheme 2020 (“the Scheme”) is hereby confirmed.

3. The Scheme as confirmed is set out in the Schedule hereto and copies of the Scheme with its accompanying plan are deposited at the offices of the Department for Transport, MHCLG, 1 Priory Square, Priory Street, Hastings, East Sussex, TN34 1EA and at the offices of The Borough Council of Calderdale at Regeneration and Strategy Major Projects, Princess Buildings, Halifax HX1 1UN.

Signed by authority of the Secretary of State

18th November 2021

Simon Connick
A Senior Civil Servant
in the Department for Transport

(a) 1980 c. 66. Section 106(3) is amended by the Infrastructure Act 2015 (c. 7), paragraph 34(2) of Schedule 1(1).
(b) S.I. 1981/238

THE SCHEDULE

Regulation 3

The Borough Council of Calderdale (A629, Southern Section, Halifax (Highway Improvements) (West Yorkshire Plus Transport Fund Phase 1b) (Calder and Hebble Navigation Bridge) Scheme 2020

The Borough Council of Calderdale (hereafter referred to as “the Council”) make this Scheme in exercise of their powers under Section 106(3) of the Highways Act 1980 and of all other powers enabling them in that behalf:-

1. The Council are authorised to construct over the navigable waters of the Calder and Hebble Navigation the bridge specified in the Schedule to this Scheme as part of the improvements to Salterhebble Hill (A629), Huddersfield Road (A629) and Elland Wood Bottom (A629), Wakefield Road (A6026) Stainland Road (B6112) Bankhouse Lane, Jubilee Road and Exley Bank at Salterhebble, Halifax.

2. This Scheme may be cited as The Borough Council of Calderdale (A629, Southern Section, Halifax) (Highway Improvements) (West Yorkshire Plus Transport Fund, Phase 1b) (Calder and Hebble Navigation Bridge) Scheme 2020.

THE CORPORATE COMMON SEAL of
THE BOROUGH COUNCIL OF
CALDERDALE

Was hereunto affixed in the presence of:-

hereunto affixed in the presence of:

Dated 18 March 2020

Authorised Signatory (Officer)

JEANNINE LYNN HOUSHMAND

PRINCIPAL SOLICITOR

Seal No: 248550

THE SCHEDULE TO THE SCHEME

Regulation 3

PLANS AND SPECIFICATIONS OF THE CALDER AND HEBBLE NAVIGATION BRIDGE

The location and general design of the Bridge are shown on the plan numbered D/W50936/S01/02 and marked “The Borough Council of Calderdale (A629, Southern Section, Halifax) (Highway Improvements) (West Yorkshire Plus Transport Fund, Phase 1b) (Calder and Hebble Navigation Bridge) Scheme 2020” sealed with the Common Seal of the Council.

POINTS OF COMMENCEMENT AND TERMINATION

From a point on the west bank of the Calder and Hebble Navigation in Salterhebble approximately 325 metres south-east of the C132 Stainland Road Canal Bridge to a point on the east bank of the Calder and Hebble Navigation in Salterhebble approximately 350 metres south-east of the C132 Stainland Road Canal Bridge.

SPAN

A skewed clear span of 35.780 metres.

HEADWAY

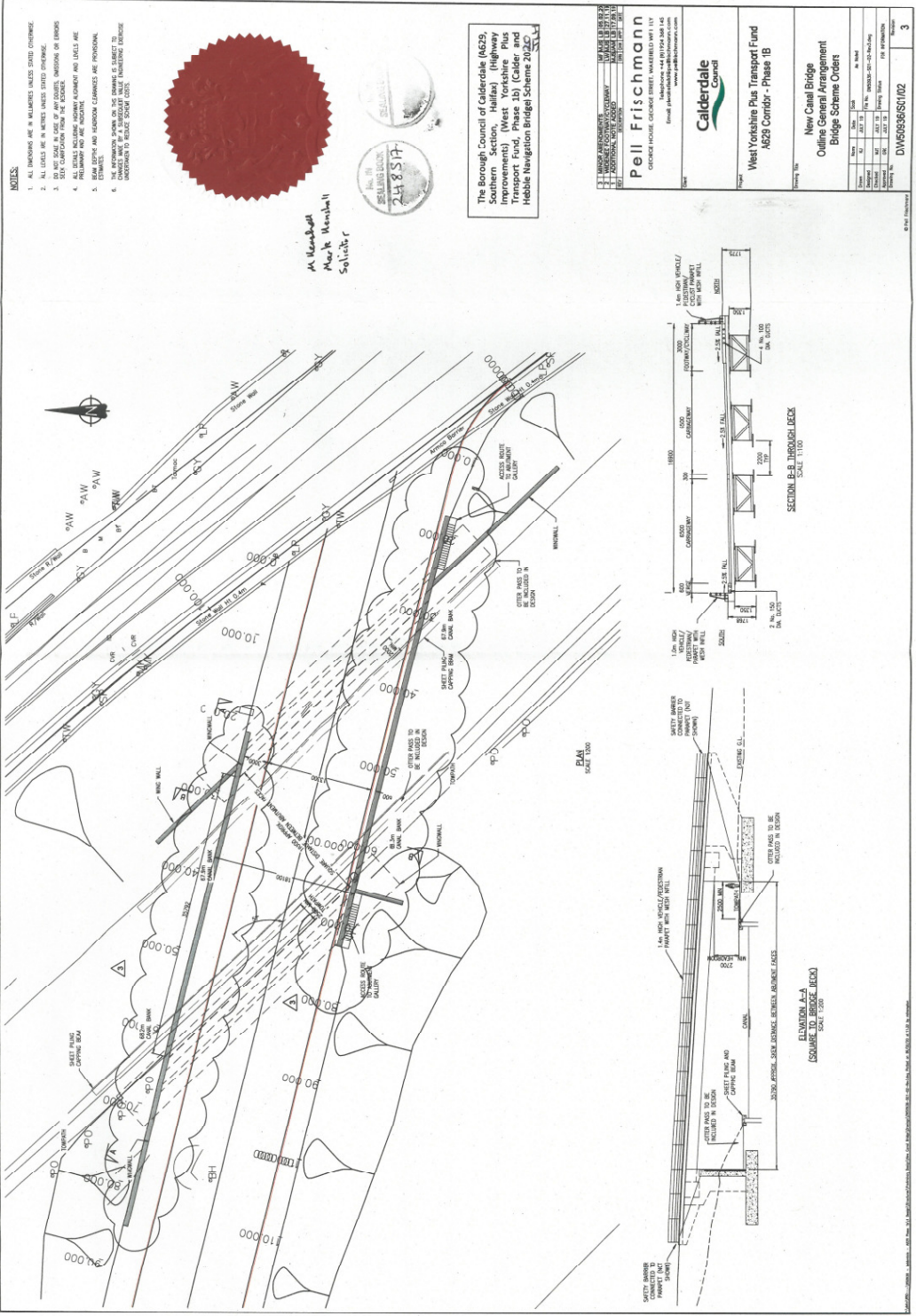
Not less than 3.15 metres across the full width of the canal waters with the minimum headroom between the towpath surface and underside of the bridge to be not less than 2.7 metres across the full width of the towpath.

WATERWAY

A minimum clear navigable waterway is to be maintained.

OVERALL DIMENSIONS

The bridge will be 18.10 metres wide. This incorporates two 0.6 metre parapets, a 0.6 metre verge on the southern side, a 13.3 metre carriageway and a 3.0 metre shared footway/cycleway on the northern side.



- NOTES:**
1. ALL DIMENSIONS ARE IN MILLIMETRES UNLESS STATED OTHERWISE.
 2. ALL LEVELS ARE IN METRES UNLESS STATED OTHERWISE.
 3. DO NOT SCALE IN CASE OF ANY DISCREPANCY, DIMENSIONS OR ERRORS.
 4. ALL DETAILS INCLUDING WORKING DRAWINGS AND LISTS ARE PRELIMINARY AND ARE SUBJECT TO CHANGE WITHOUT NOTICE.
 5. DIMENSIONS AND TOLERANCES ARE PROVISIONAL.
 6. THE INFORMATION ON THIS DRAWING IS SUBJECT TO VARIATIONS IN THE FIELD. THE CONTRACTOR SHALL BE RESPONSIBLE FOR VERIFYING THE INFORMATION TO BE OBTAINED FROM THE FIELD.



A. Mansfield
Mark Manshall
Solicitor



The Borough Council of Calderdale (A629, Southern Section, Halifax) (Highway Improvements) (West Yorkshire Plus Yorkshire Water) (Calderdale and Halifax Navigation Bridge) Scheme 2016/17

Peil Frischmann CONSULTING ENGINEERS 100, BRIDGE STREET, HALIFAX, WEST YORKSHIRE, LS1 2UR TEL: 01434 646464 FAX: 01434 646465 www.peilfrischmann.com	
Calderdale Canal	
West Yorkshire Plus Transport Fund A629 Corridor - Phase 1B	
New Canal Bridge Outline General Arrangement Bridge Scheme Orders	
Drawing No: DW650936/01/02	
Scale: 1:100	
Date: 24.8.17	
Author: M. Mansfield	
Checker: M. Mansfield	
Date: 24.8.17	
Project: A629 Corridor - Phase 1B	
Drawing: 01-03-01-02	
Scale: 1:100	
Page: 3	

EXPLANATORY NOTE

(This note is not part of the Instrument)

This Instrument confirms a Scheme to construct over the navigable waters of the Calder and Hebble Navigation the bridge specified in the Schedule to this Scheme as part of the improvements to Salterhebble Hill (A629), Huddersfield Road (A629) and Elland Wood Bottom (A629), Wakefield Road (A6026) Stainland Road (B6112) Bankhouse Lane, Jubilee Road and Exley Bank at Salterhebble, Halifax.

The Secretary of State has modified this Bridge Scheme as follows:

1. In the Schedule to the Scheme, the paragraph titled ‘SPAN’, the measurement 35.8 metres has been amended to 35.780 metres.

2. In the Schedule to the Scheme, the paragraph titled “HEADWAY”, ‘The soffit shall not be less than 2.7 metres above the towpath is deleted and replaced by ‘Not less than 3.15 metres across the full width of the canal waters with the minimum headroom between the towpath surface and underside of the bridge to be not less than 2.7 metres across the full width of the towpath’.

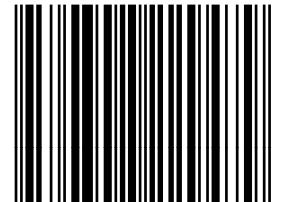
© Crown copyright 2021

Printed and published in the UK by The Stationery Office Limited under the authority and superintendence of Jeff James, Controller of Her Majesty’s Stationery Office and Queen’s Printer of Acts of Parliament.

£6.05

<http://www.legislation.gov.uk/id/uksi/2021/1317>

ISBN 978-0-34-822947-9



9 780348 229479