
STATUTORY INSTRUMENTS

2019 No. 866

HIGHWAYS, ENGLAND

The Lancashire County Council (Savick Brook Viaduct) Scheme 2018 Confirmation Instrument 2019

Made - - - - 11th April 2019

Coming into force in accordance with article 1

The Secretary of State for Transport makes this Instrument in exercise of the powers conferred by section 106(3) of the Highways Act 1980(1), and now vested in the Secretary of State(2).

1. This Instrument may be cited as “the Lancashire County Council (Savick Brook Viaduct) Scheme 2018 Confirmation Instrument 2019” and shall come into force on the date on which notice that it has been confirmed is first published in accordance with paragraph 1 of Schedule 2 to the Highways Act 1980.

2. The Lancashire County Council (Savick Brook Viaduct) Scheme 2018, and as set out in the Schedule, is hereby confirmed with modifications.

3. The Scheme as confirmed is set out in the Schedule (including the plan) and copies of the Scheme with its accompanying plan are deposited at the offices of the Department for Transport, Floor 13 (IMD), Ashdown House, St Leonards on Sea, Hastings, East Sussex TN37 7GA and at the offices of Lancashire County Council, Environment Directorate, Pitt Street, Preston PR1 0LD, Preston City Council, Town Hall, Preston PR1 2RL, Fylde Borough Council, Town Hall, Lytham St Annes FY8 1LW, Ingol Library, Ventnor Place, Ingol, Preston PR2 3YX and Savick Library, 6 Birkdale Drive, Ashton-on-Ribble, Preston PR2 1UL.

Signed by authority of the Secretary of State for Transport

Simon Connick

A Senior Civil Servant in the Department for
Transport

11th April 2019

(1) 1980c. 66. Section 106(3) is amended by the Infrastructure Act 2015 (c.7), paragraph 34(2) of Schedule 1(1).
(2) S.I. 1981/238

Status: This is the original version (as it was originally made). This item of legislation is currently only available in its original format.

THE SCHEDULE

Regulation 3

THE LANCASHIRE COUNTY COUNCIL (SAVICK BROOK VIADUCT) SCHEME 2018

The Lancashire County Council (hereinafter referred to as the “The Council”) make this Scheme in exercise of their powers under Section 106(3) of the Highways Act 1980 and of all other powers enabling them in that behalf.

1. The Council are authorised to construct over the navigable waters of the Savick Brook (Millenium Ribble Link) the bridge specified in the Schedule to this Scheme as part of the highway which they are proposing to construct between the M55 Motorway at Junction 2 and the highway known as A583 Riversway, Preston, Lancashire in the District of Preston in the said County.

2. The Scheme may be cited as The Lancashire County Council (Savick Brook Viaduct) Scheme 2018.

THE SCHEDULE TO THIS SCHEME

Regulation 3

PLAN AND SPECIFICATION OF THE BRIDGE

The location and general design of the Bridge are shown on the attached plans.

POINTS OF COMMENCEMENT AND TERMINATION

From a point on the south bank of the Millenium Ribble Link (Savick Brook) 208 metres north east of Ribble Link Occupation Bridge (Goodier Bridge) located at the intersection of the public footpath 21 and the Millenium Ribble Link (Savick Brook).

To a point on the north bank of Millenium Ribble Link (Savick Brook) 200.8 metres north east of Ribble Link Occupation Bridge (Goodier Bridge) located at the intersection of the public footpath 21 and the Millenium Ribble Link (Savick Brook).

SPAN

Dimension (along bridge centreline)

Length of Bridge over the watercourse, parallel to Bridge	9.7m
Length of span over the waterway	50m
Total length of Bridge	278m

HEADWAY

Not less than 5.7 metres above the level of the towpath.

WATERWAY

A minimum clear navigable waterway of 9.0 metres to 10.1 metres perpendicular to the banks under the footprint of the Bridge.

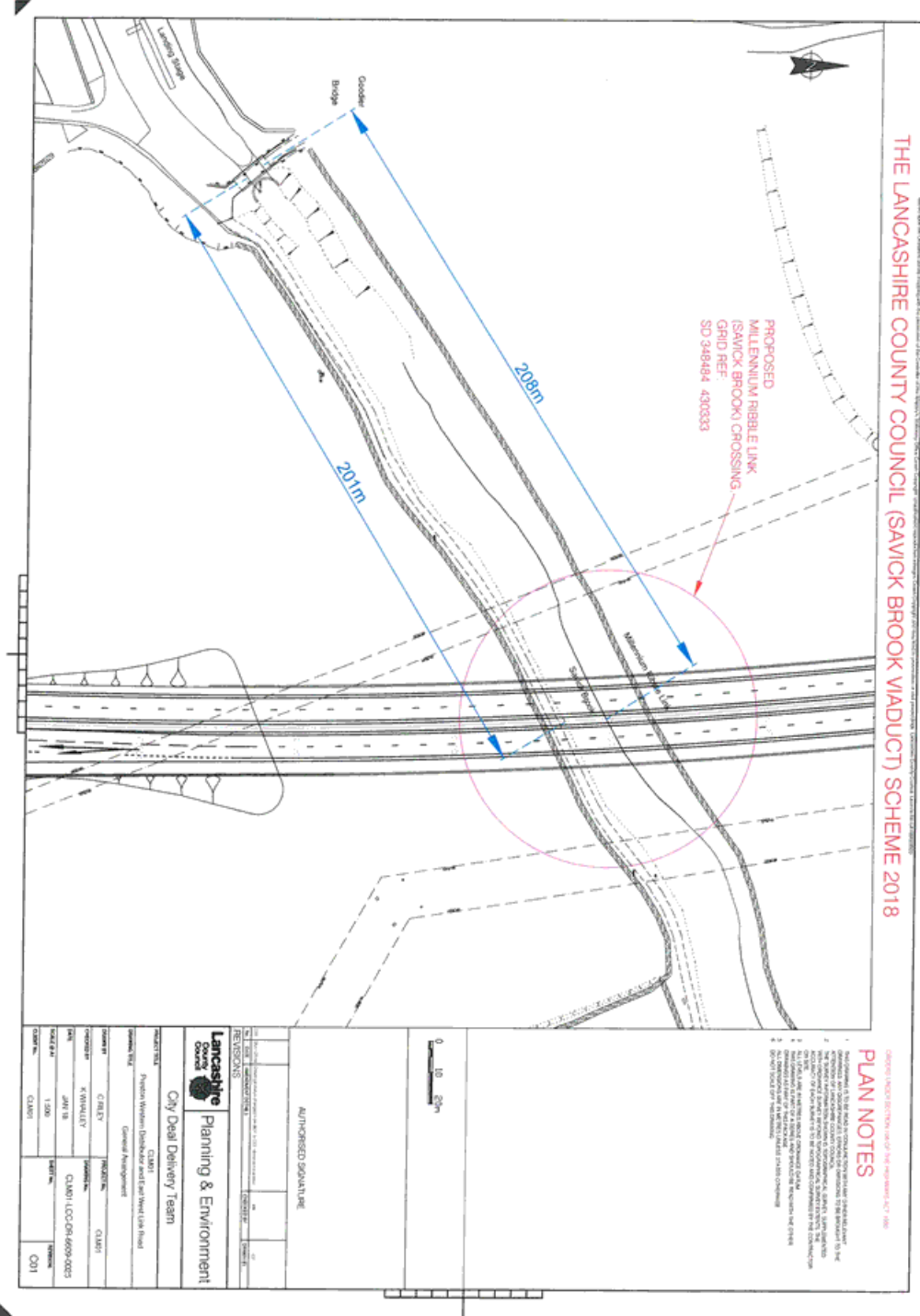
Status: This is the original version (as it was originally made). This item of legislation is currently only available in its original format.

OVERALL DIMENSIONS

The Bridge will be 28.8 metres wide overall and will carry 7.3 metres wide dual carriageways, with 1.0 metre wide hard strips, segregated by a 2.5 metre wide raised central reserve. There will be a 2.5 metre minimum wide raised verge on the west of the Bridge and a 4.0 metre minimum wide combined footway and cycleway on the east side of the Bridge.

C.S	The Common Seal of the Lancashire County Council was hereunto affixed this 14 th day of February 2018 in the presence of:- Authorised Signatory
-----	---------------------------------------------------------------------------------------------------------------------------------------------------------------

Status: This is the original version (as it was originally made). This item of legislation is currently only available in its original format.



EXPLANATORY NOTE

(This note is not part of the Order)

This Instrument confirms a Scheme to construct over the navigable waters of the Lancaster Canal, the Bridge specified in the Schedule to this Scheme as part of the highway which they are proposing to construct between the M55 motorway at Junction 2 and the highway known as A583 Riversway, Preston, Lancashire in the District of Preston in the said County.

The Secretary of State has modified this Bridge Scheme as follows:

1. Drawing Number CLM01-LCC-DO-6611-0002 Revision W01-INF has been replaced by Drawing Number CLM01-LCC-DR-6609-0025 Revision C01.