
STATUTORY INSTRUMENTS

2018 No. 381

HIGHWAYS, ENGLAND

The Wigan Borough Council (Scotman’s Flash, Wigan Canal Bridge) Scheme 2017 Confirmation Instrument 2018

Made - - - - 15th March 2018

Coming into force in accordance with article 1

The Secretary of State for Transport, makes this Instrument in exercise of the powers conferred by section 106(3) of the Highways Act 1980⁽¹⁾, and now vested in the Secretary of State⁽²⁾:

1. This Instrument may be cited as The Wigan Borough Council (Scotman’s Flash, Wigan Canal Bridge) Scheme 2017 Confirmation Instrument 2018 and shall come into force on the date on which notice that it has been confirmed is first published in accordance with paragraph 1 of Schedule 2 to the Highways Act 1980.

2. The Wigan Borough Council (Scotman’s Flash, Wigan Canal Bridge) Scheme 2017, and as set out in the Schedule, is hereby confirmed with modifications.

3. The Scheme as confirmed is set out in the Schedule (including the plan) and copies of the Scheme with its accompanying plan are deposited at the offices of the Department for Transport, Floor 13 (IMD), Ashdown House, St Leonards on Sea, Hastings, East Sussex TN37 7GA and at the offices of the Wigan Borough Council, Town Hall, Library Street, Wigan, WN1 1YN.

Signed by authority of the Secretary of State for Transport

15th March 2018

C J Miller
A Senior Civil Servant in the Department for
Transport

(1) 1980 c. 66. Section 106(3) is amended by the Infrastructure Act 2015 (c. 7), paragraph 34(2) of Schedule 1(1).
(2) S.I. 1981/238

Status: This is the original version (as it was originally made). This item of legislation is currently only available in its original format.

THE SCHEDULE

Regulation 3

THE WIGAN BOROUGH COUNCIL (SCOTMAN’S FLASH, WIGAN CANAL BRIDGE) SCHEME 2017

The Wigan Borough Council (hereinafter referred to as “the Council”) make this Scheme in exercise of their powers under section 106(3) of the Highways Act 1980 and of all other powers enabling them in that behalf:

1. The Council are authorised to construct over the navigable waters of the Leeds Liverpool Canal, the bridge specified in the Schedule to this Scheme as part of the highway which they are proposing to divert and construct a new section thereof from its junction with A49 Goose Green to the Westwood Park Link Road, Poolstock in the Borough of Wigan.

2. This Scheme may be cited as The Wigan Borough Council (Scotman’s Flash, Wigan Canal Bridge) Scheme 2017.

Given under the common seal of the Council

On the 25th day of October 2017

THE COMMON SEAL of the
WIGAN BOROUGH COUNCIL

was hereunto affixed in the presence of:

C.S

Assistant Director - Legal

THE SCHEDULE
TO THE SCHEME

Regulation 3

Plans and Specifications of the Scotman’s Canal Bridge

The location and general design of the bridge are shown on the plans numbered H/8894/100/2 and H279/HCL/601 rev. C marked ‘The Wigan Borough Council (Scotman’s Flash, Wigan Canal Bridge) Scheme 2017’.

Points of commencement and termination

From a point on the west bank of the Leeds Liverpool Canal 550 metres east of the B5238 Poolstock Lane.

To a point on the east bank of the Leeds Liverpool Canal 575 metres east of the B5238 Poolstock Lane.

Span(s)

Single span bridge. Clear span between faces of abutments of 32.00 metres. Clear span between reinforced soil abutments of 25.3 metres.

Headway

Not less than 5.0 metres above top water level and not less than 3.87 metres above the new towpath level, which runs alongside the canal.

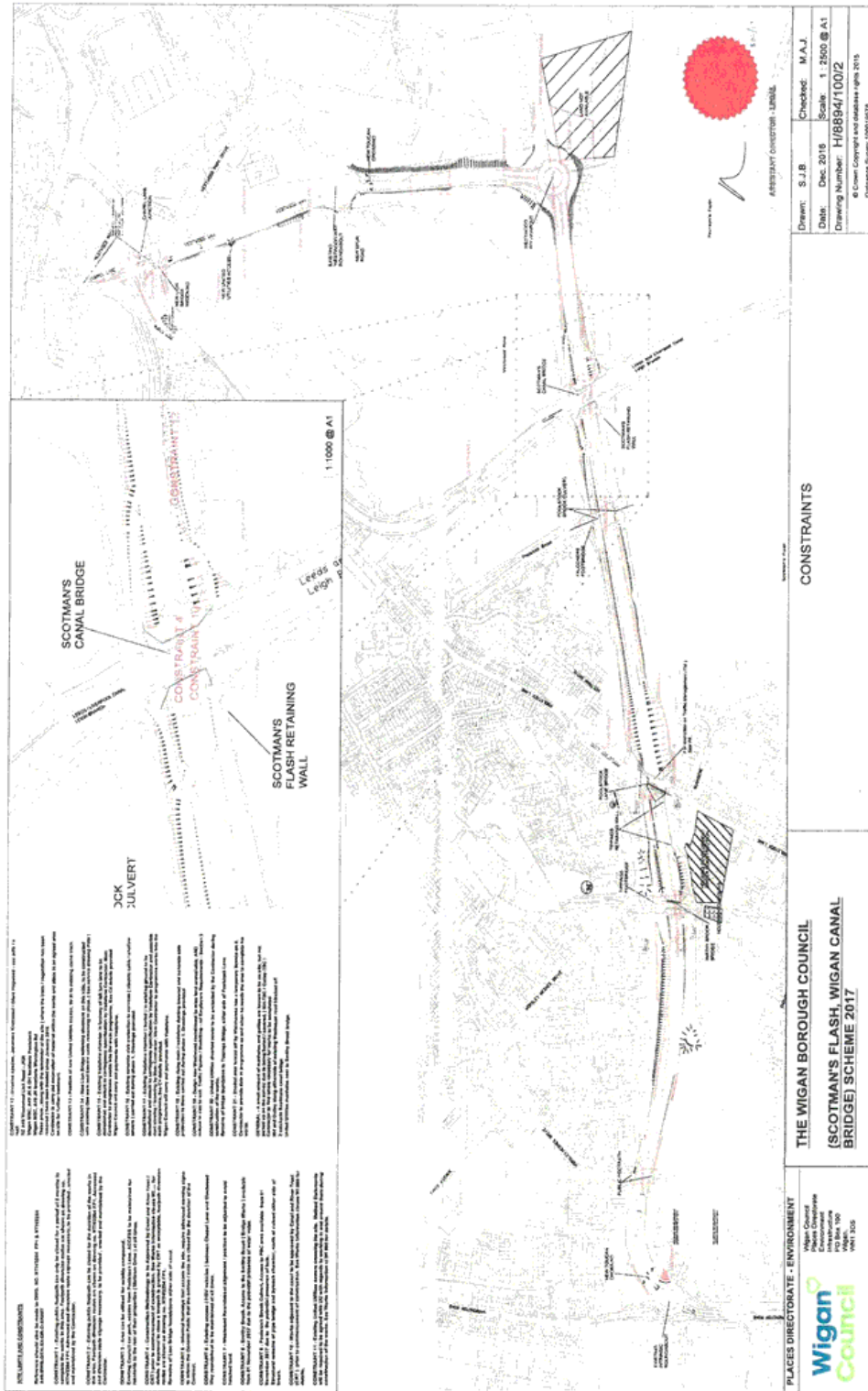
Waterway

A minimum clear navigable waterway of 9.35 metres.

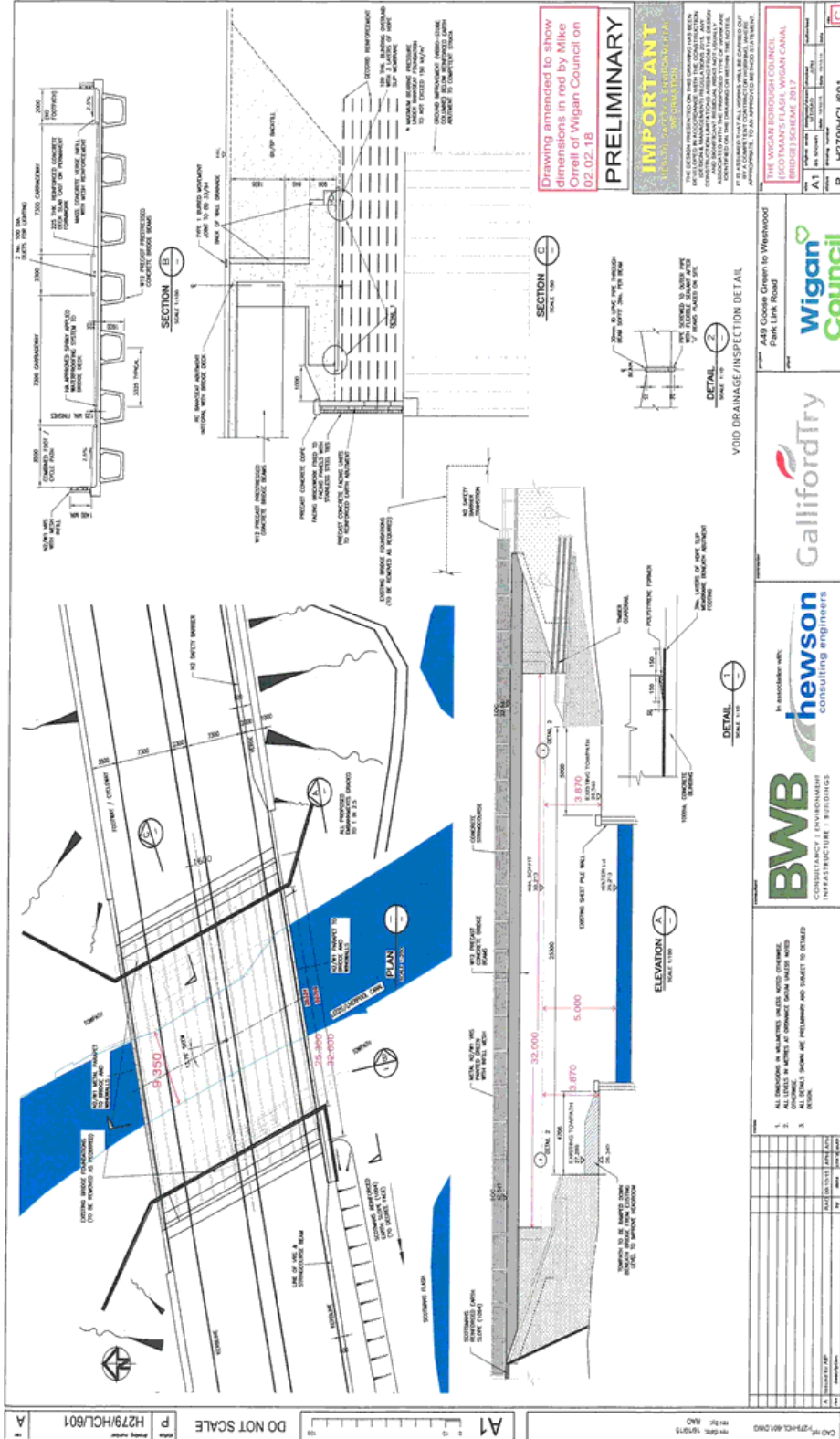
Overall dimensions

The bridge will carry a 2 lane dual carriageway comprising of 4 x 3.65 metre lane highway, a 3.5 metre combined cycleway/footway, a 2 metre clear verge and 2.3 metre central reserve.

Status: This is the original version (as it was originally made). This item of legislation is currently only available in its original format.



Status: This is the original version (as it was originally made). This item of legislation is currently only available in its original format.



Status: This is the original version (as it was originally made). This item of legislation is currently only available in its original format.

EXPLANATORY NOTE

(This note is not part of the Order)

This instrument confirms a Scheme to construct over the navigable waters of the Leeds Liverpool Canal, the bridge specified in the Schedule to this Scheme as part of the highway which they are proposing to divert and construct a new section thereof from its junction with A49 Goose Green to the Westwood Park Link Road, Poolstock in the Borough of Wigan.

The Secretary of State has modified this Bridge Scheme as follows:

1. In the opening paragraph on page 1 of the Order the word ‘scheme’ has been replaced by ‘Scheme’.
2. In the Schedule to the Scheme, the paragraph titled ‘Plans and Specifications of the Scotsman’s Canal Bridge’ the words ‘rev.A’ have been added after Plan Number H279/HCL/601.
3. In the Schedule to the Scheme, the paragraph titled ‘Plans and Specifications of the Scotsman’s Canal Bridge’, the title of the Order has been amended to ‘The Wigan Borough Council (Scotsman’s Flash, Wigan Canal Bridge) Scheme 2017’.
4. In the Schedule to the Scheme, the paragraph titled ‘Span(s)’ has been amended to ‘Single span bridge. Clear span between faces of abutments of 32.00 metres. Clear span between reinforced soil abutments of 25.3 metres’.
5. Drawing number H279/HCL/601 rev A has been replaced by H279/HCL/601 rev C.