

SCHEDULE 17

Regulation 5

Letters, numeral and other characters

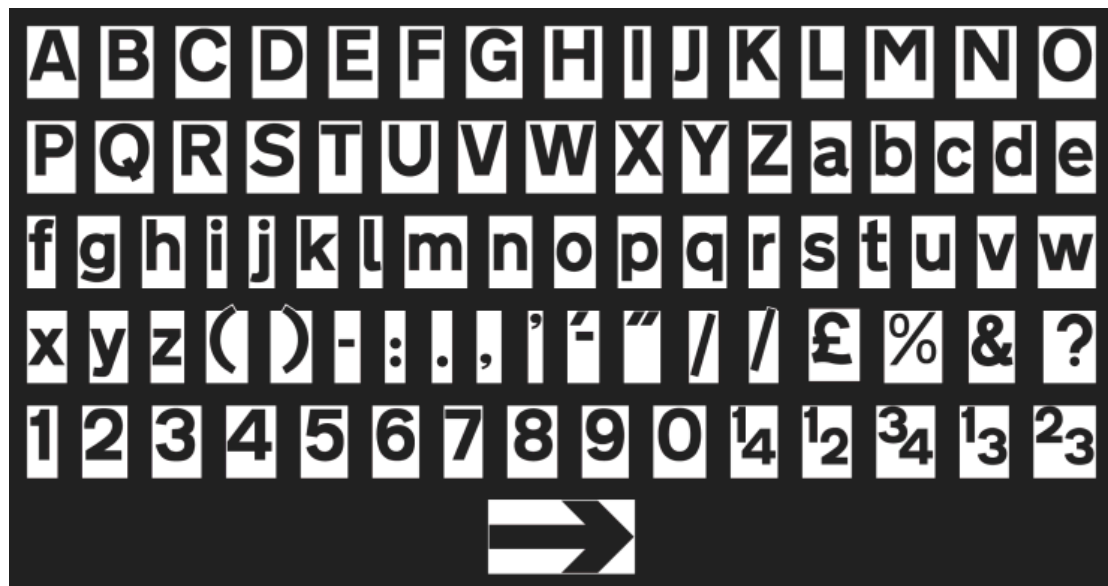
PART 1

Letters, numerals and other characters for use with a black, blue, brown, dark green, green or red background



PART 2

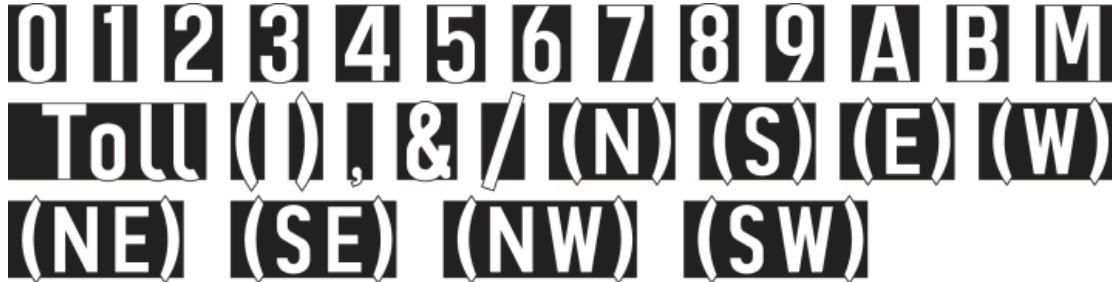
Letters, numerals and other characters for use with an orange, white or yellow background



*Status: This is the original version (as it was originally made). This item of legislation is currently only available in its original format.*

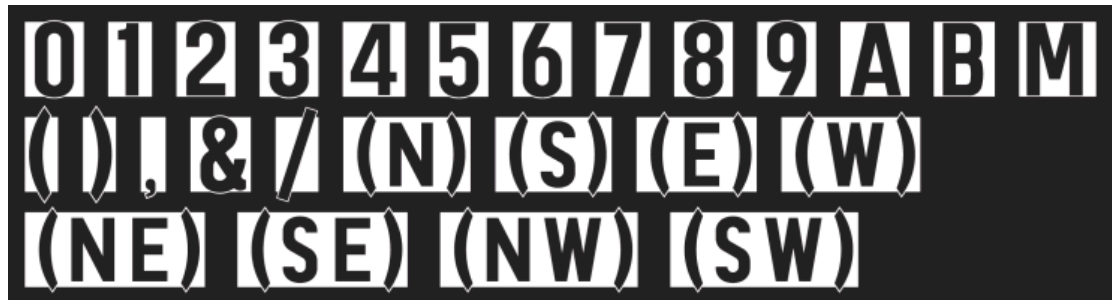
### PART 3

Letters, numerals and other characters for motorway route numbers on blue backgrounds



### PART 4

Letters, numerals and other characters for route numbers on temporary motorway signs with yellow backgrounds



### PART 5

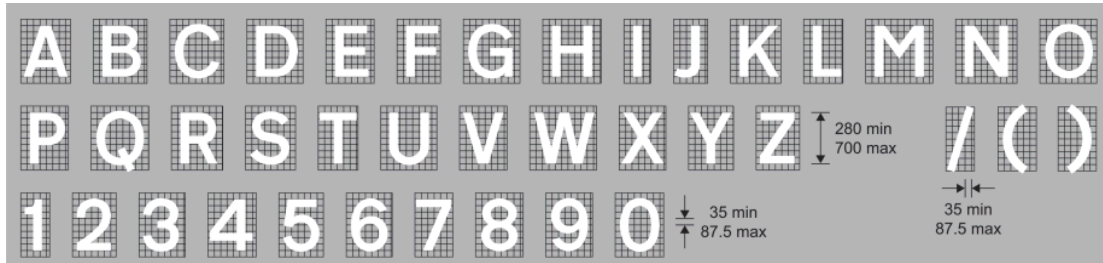
Letters, numerals and other characters for use on variable message signs where the characters shown in parts 1, 2, 3 and 4 cannot be used because of the method of construction or operation of the sign



**Status:** This is the original version (as it was originally made). This item of legislation is currently only available in its original format.

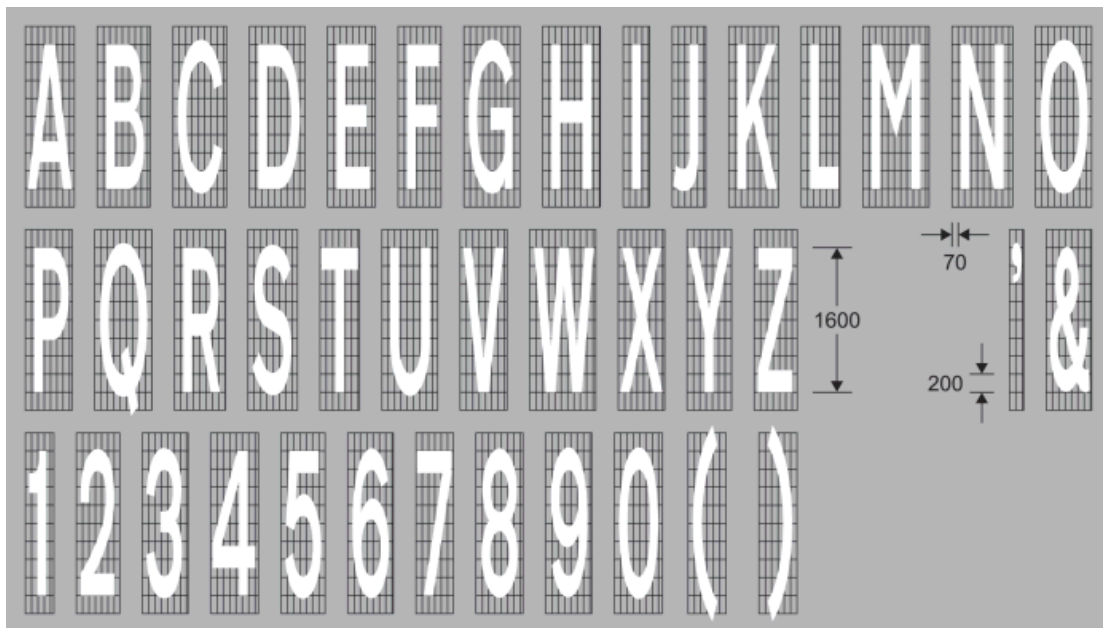
## PART 6

Proportions and forms of letters, numerals and other characters for use in road markings where the character height is between 280 mm and 700 mm (inclusive)



## PART 7

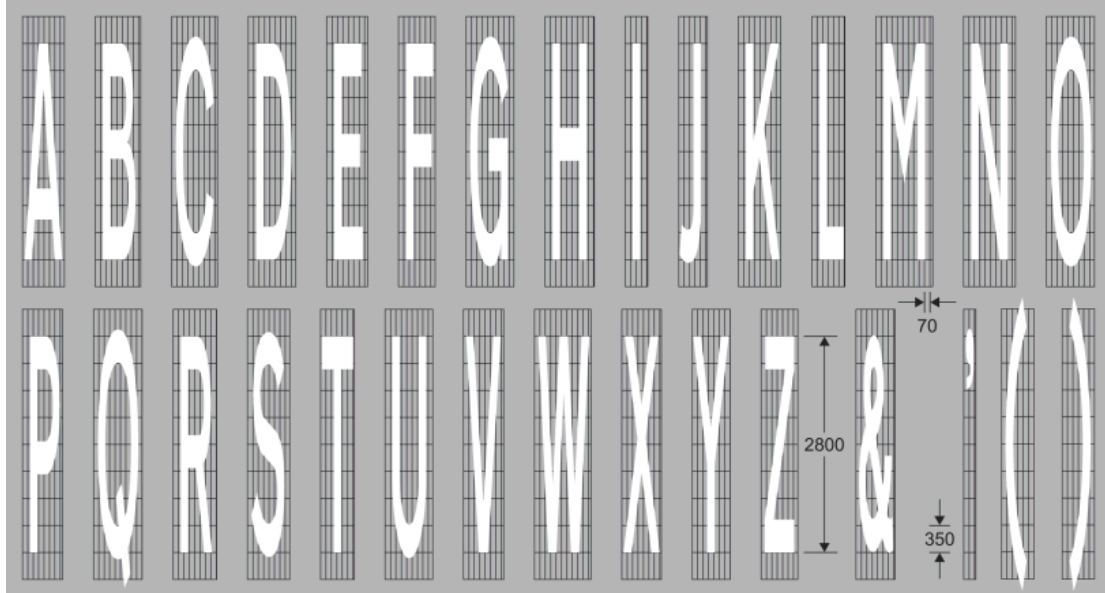
Letters, numerals and other characters for use in road markings where the character height is 1600 mm (or 705 mm or 1035 mm in accordance with regulation 5(15))



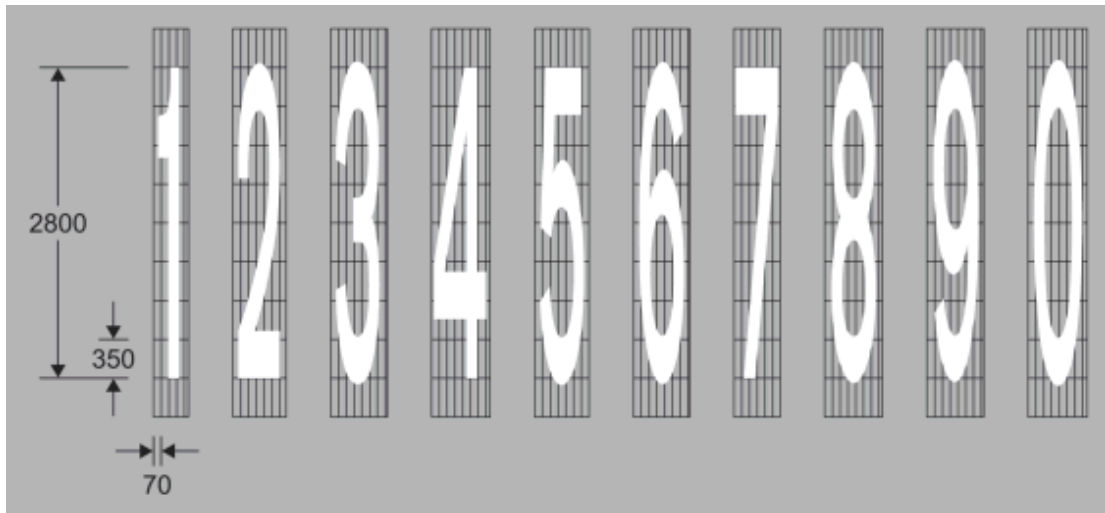
**Status:** This is the original version (as it was originally made). This item of legislation is currently only available in its original format.

## PART 8

Letters, numerals and other characters for use in road markings where the character height is 2800 mm



Letters, numerals and other characters for use in road markings where the character height is 2800 mm



*Status:* This is the original version (as it was originally made). This item of legislation is currently only available in its original format.

## PART 9

Scottish Gaelic letters, numerals and other characters  
for use on a brown or dark green background

A À B C D E È F G H I Ì L  
M N O Ò P R S T U Ù a à b  
c d e è f g h i ì l m n o ò p r  
s t u ù ( ) - : . , ' ' " / / £ % & ?  
1 2 3 4 5 6 7 8 9 0 ¼ ½ ¾ ⅓ ⅔

## PART 10

Scottish Gaelic letters, numerals and other characters for use on a white background

A À B C D E È F G H I Ì L  
M N O Ò P R S T U Ù a à b  
c d e è f g h i ì l m n o ò p r  
s t u ù ( ) - : . , ' ' " / / £ % & ?  
1 2 3 4 5 6 7 8 9 0 ¼ ½ ¾ ⅓ ⅔