
STATUTORY INSTRUMENTS

2005 No 1867

HIGHWAYS, ENGLAND

The Derbyshire County Council (Erewash Canal Bridge) Scheme 2003 Confirmation Instrument 2005

Made - - - - 5th July 2005

Coming into force in accordance with article 1

The Secretary of State for Transport makes this Instrument in exercise of powers conferred by section 106(3) of the Highways Act 1980(1) and now vested in him(2) and of all other powers enabling him in that behalf:

1. This Instrument may be cited as The Derbyshire County Council (Erewash Canal Bridge) Scheme 2003 Confirmation Instrument 200 and shall come into force on the date on which notice that it has been confirmed is first published in accordance with paragraph 1 of Schedule 2 to the Highways Act 1980.

2. The Derbyshire County Council (Erewash Canal Bridge) Scheme 2003 (“the Scheme”) is hereby confirmed with modifications.

3. The Scheme as confirmed is set out in the Schedule hereto (including the plan) and copies of the Scheme with its accompanying plan are deposited at the offices of the Department for Transport, Floor 13 (IMD), Ashdown House, St Leonards on Sea, Hastings, East Sussex, TN37 7GA, and at the offices of the Derbyshire County Council, County Hall, Matlock, Derbyshire, DE4 3AG.

Signed by authority of the Secretary of State for Transport

5th July 2005

J Blackie
Regional Director Government Office for the
North East

(1) 1980 c. 66.
(2) S.I.1981/238.

Status: This is the original version (as it was originally made). This item of legislation is currently only available in its original format.

THE SCHEDULE

THE DERBYSHIRE COUNTY COUNCIL (EREWASH CANAL BRIDGE) SCHEME 2003

The Derbyshire County Council (hereinafter referred to as “the Council”) make this Scheme in exercise of their powers under section 106(3) of the Highways Act 1980 and under an Agreement dated 2nd June 2003 with Nottinghamshire County Council made in accordance with the powers contained in Section 8 of the Highways Act 1980 and of all other powers enabling them in that behalf.

1. The Council is authorised to construct over the navigable waters of the Erewash Canal the bridge specified in the Schedule to this Scheme as part of the highway which they are proposing to construct between the A6007 (Chalons Way, Ilkeston) and the A6096 (Awsorth-Cossall By-Pass) in the Borough of Broxtowe in the County of Nottinghamshire and in the Borough of Erewash in the County of Derbyshire.

2. The Scheme may be cited as the Derbyshire County Council (Erewash Canal Bridge) Scheme 2003.

Given under the common seal of the Council on the 24th day of October 2003.

THE SCHEDULE TO THE SCHEME

PLANS AND SPECIFICATIONS OF THE EREWASH CANAL BRIDGE

Points of commencement and termination

From a point on the west bank of the canal 662 metres east of the junction with the B6007/A6007 Chalons Way measured along the centre line of the proposed road (Grid Ref 447140E, 342605N).

From a point on the east bank of the canal 498 metres west of the junction with the Cossall and Awsorth By-pass measured along the centre line of the proposed road (Grid Ref 447130E, 342600N).

Span

A single square span of 9.70 metres.

Headway

Not less than 2.625 metres above the mean high water spring tide level (MHWS) of 48.78 metres AOD.

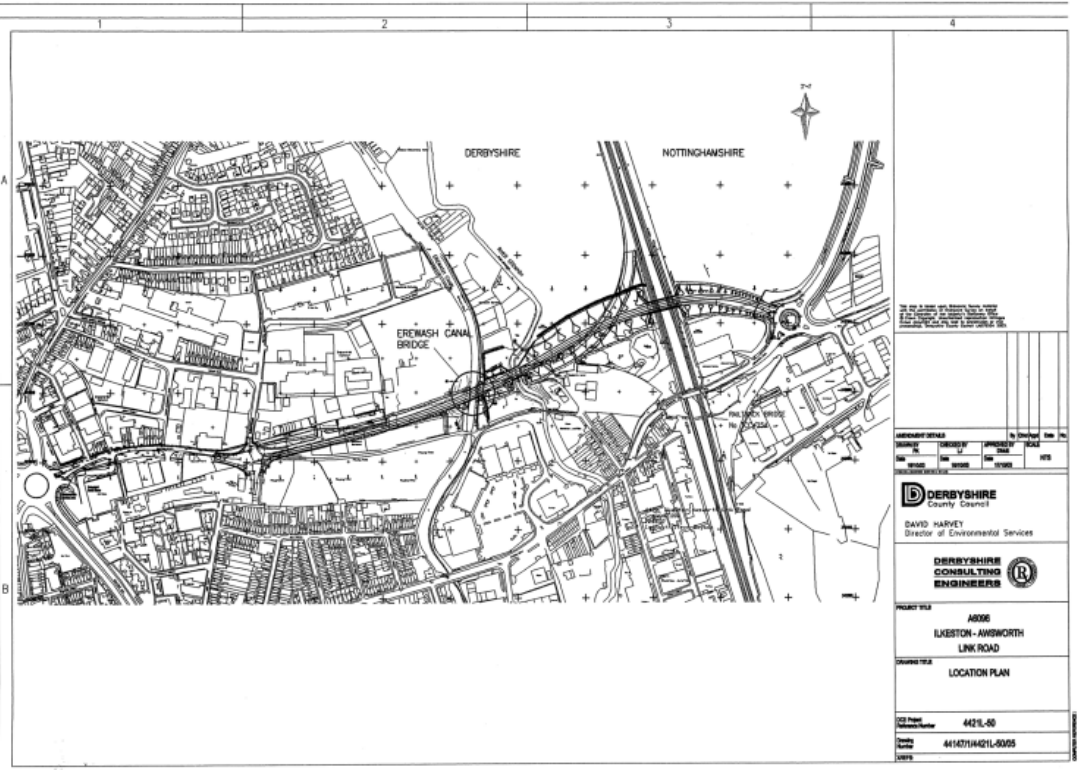
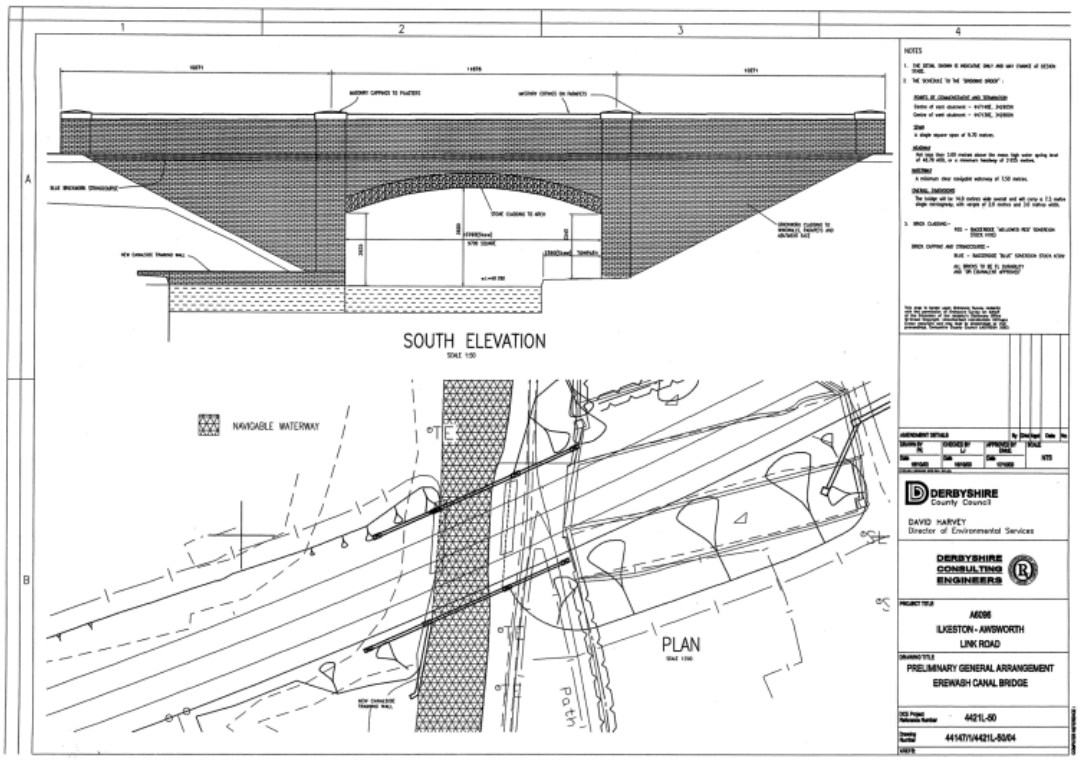
Waterway

A minimum clear navigable waterway of 7.50 metres.

Overall dimensions

The Bridge will be 14 metres wide overall and will carry a 7.30 metre wide single carriageway, with verges of 2 metres and 3 metres width.

Status: This is the original version (as it was originally made). This item of legislation is currently only available in its original format.



Status: This is the original version (as it was originally made). This item of legislation is currently only available in its original format.

THE COMMON SEAL of the DERBYSHIRE COUNTY COUNCIL was hereunto affixed in the presence of:

L.S.

J R Fawcett
County Secretary