

2002 No. 343

HIGHWAYS, ENGLAND AND WALES

**The M25 Motorway (Heathrow Terminal 5 Access) (No1)
Connecting Roads Scheme 2002**

Made - - - - - *13th February 2002*

Coming into force - - - *5th March 2002*

The Secretary of State for Transport, Local Government and the Regions makes this Scheme in exercise of powers conferred by sections 16, 17 and 19 of the Highways Act 1980^(a) and now vested in him ^(b), and of all other powers enabling him in that behalf:

1. This Scheme may be cited as the M25 Motorway (Heathrow Terminal 5 Access) (No 1) Connecting Roads Scheme 2002 and shall come into force on 5th March 2002.

2. In this Scheme:

- (i) “connecting roads” means the special roads described in Schedule to this Scheme;
- (ii) “the plan” means the plan numbered HA Plan No HA/16/OD/29, marked “The M25 Motorway (Heathrow Terminal 5 Access) (No 1) Connecting Roads Scheme 2002” signed by authority of the Secretary of State for Transport, Local Government and the Regions and deposited at the DTLR Records Management Branch, Floor 13 (IMD), Ashdown House, St Leonards on Sea, Hastings, East Sussex TN37 7GA (Highways Agency, St Christopher House, Southwark Street, London, SE1 0TE); and
- (iii) “the special roads” means each connecting road.

3. The Secretary of State is authorised to provide the special roads for the exclusive use of traffic of Classes I and II of the classes of traffic set out in Schedule 4 to the Highways Act 1980.

4. The centreline of each of the special roads is indicated by a heavy black line on the plan.

5. Each of the special roads shall become a trunk road on the date when this Scheme comes into force.

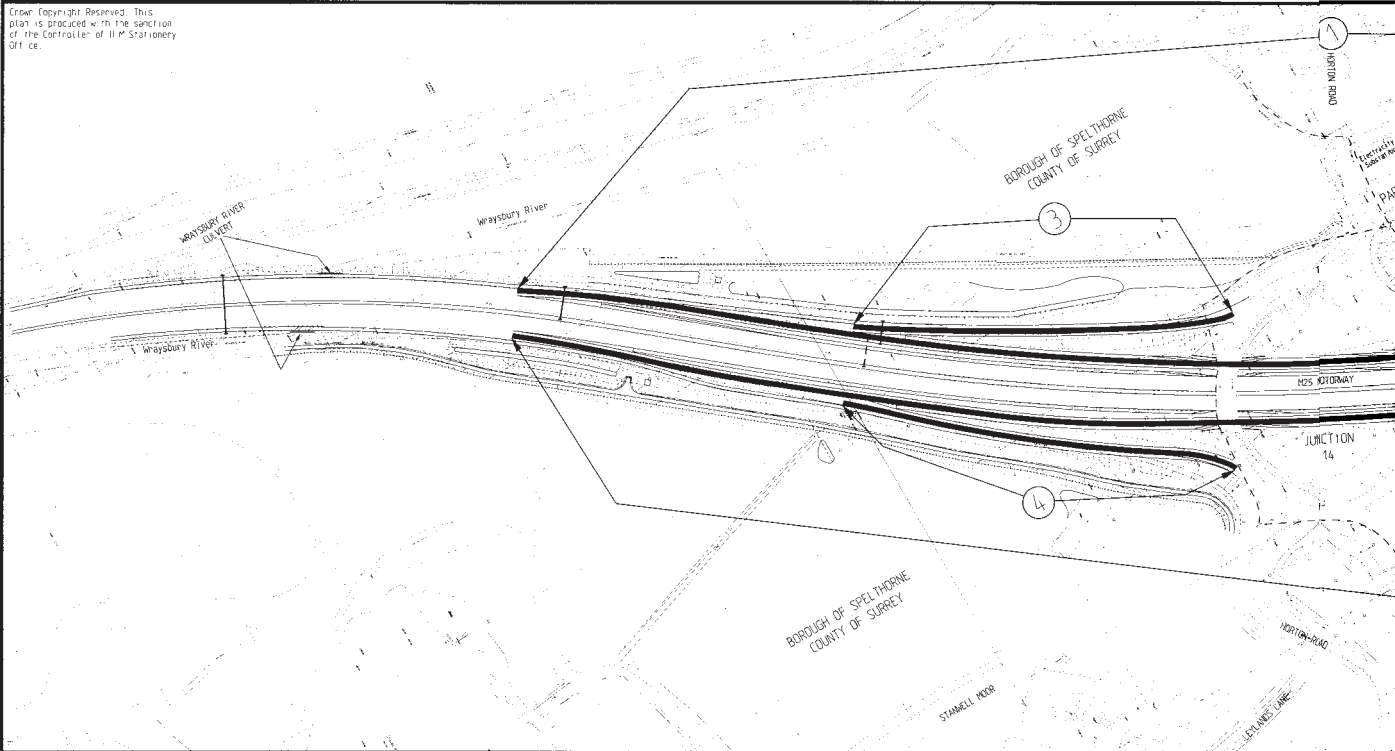
Signed by authority of the
Secretary of State for Transport,
Local Government and the Regions

13th February 2002

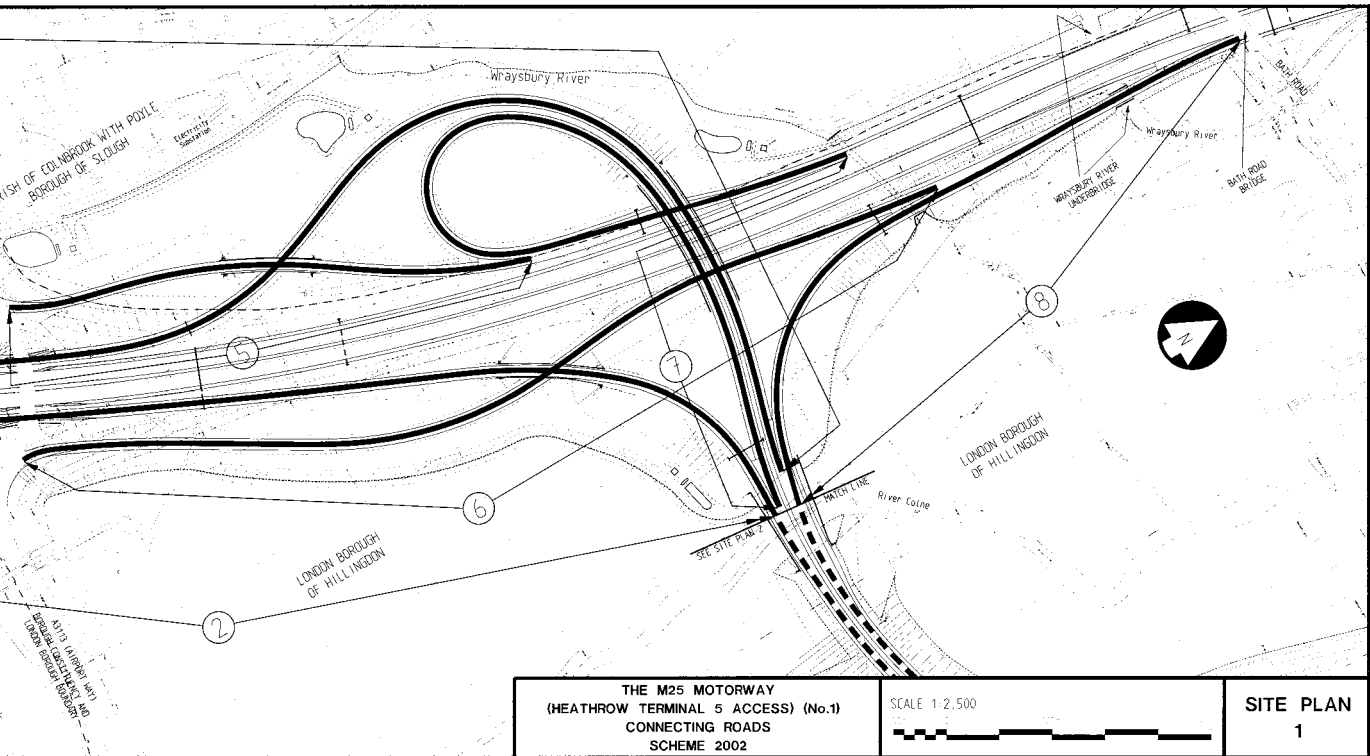
D W Ward
Divisional Director of the Highways Agency

(a) 1980 c. 66.
(b) S.I. 1981/238.

Copyright Reserved. This plan is produced with the sanction of the Controller of Her Majesty's Stationery Office.



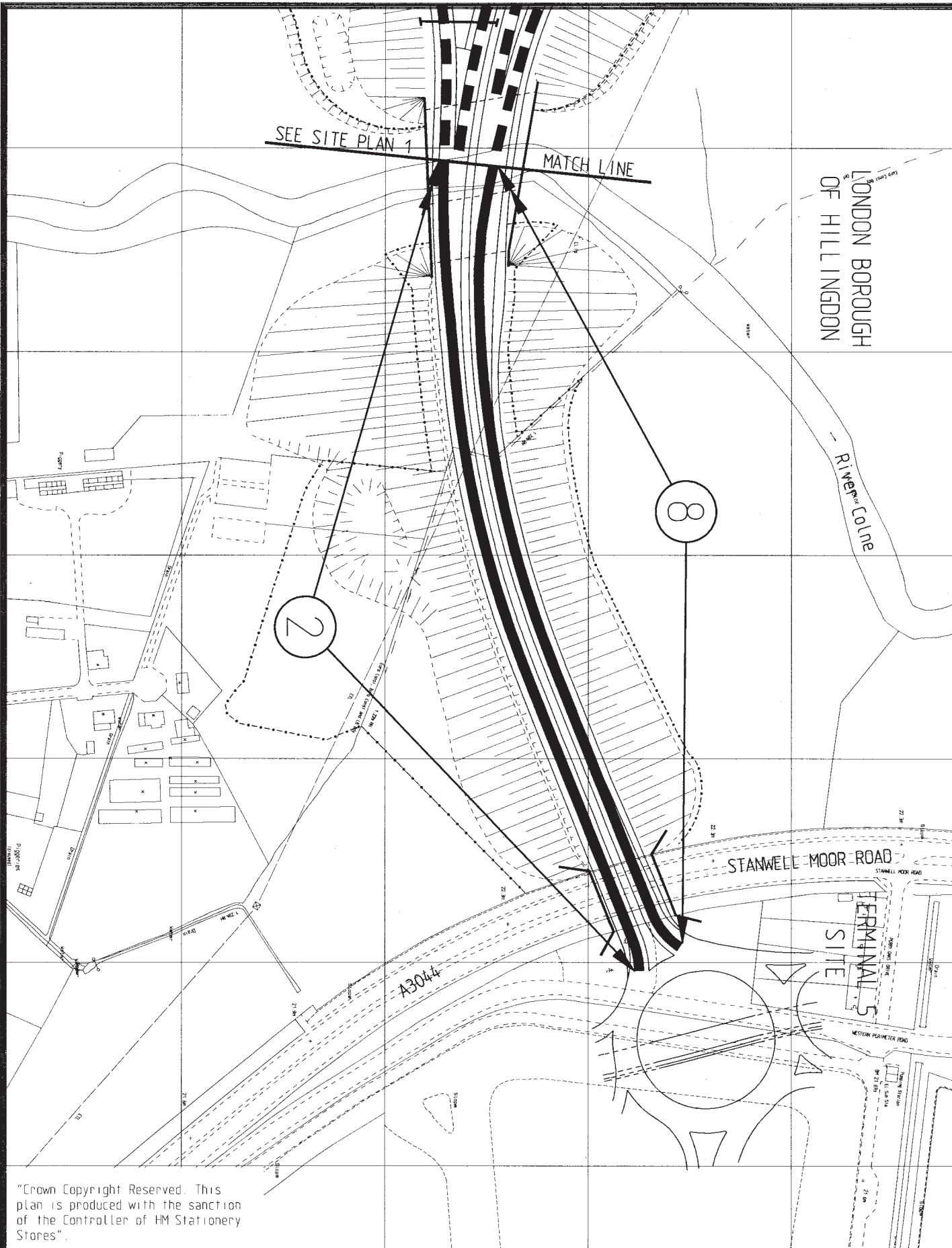
Copyright Reserved. This plan is produced with the sanction of the Controller of Her Majesty's Stationery Office.



THE M25 MOTORWAY
 (HEATHROW TERMINAL 5 ACCESS) (No.1)
 CONNECTING ROADS
 SCHEME 2002

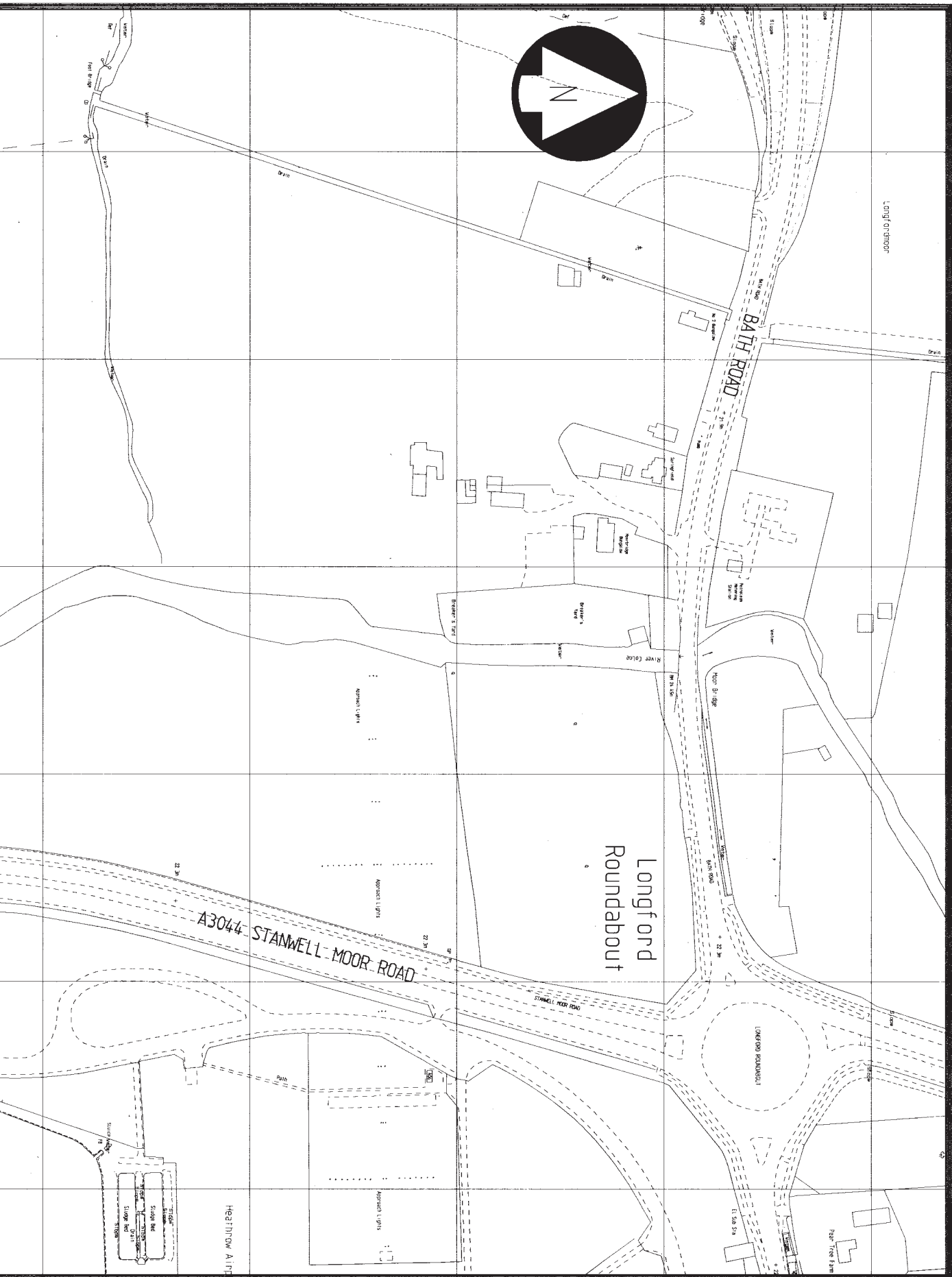
SCALE 1:2,500

SITE PLAN
 1

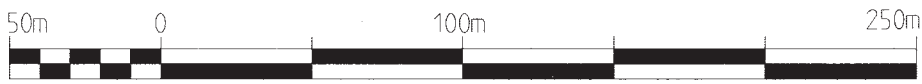


"Crown Copyright Reserved. This plan is produced with the sanction of the Controller of HM Stationery Stores".

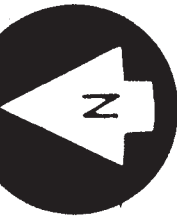
**THE M25 MOTORWAY
(HEATHROW TERMINAL 5 ACCESS) (No.1)
CONNECTING ROADS
SCHEME 2002**



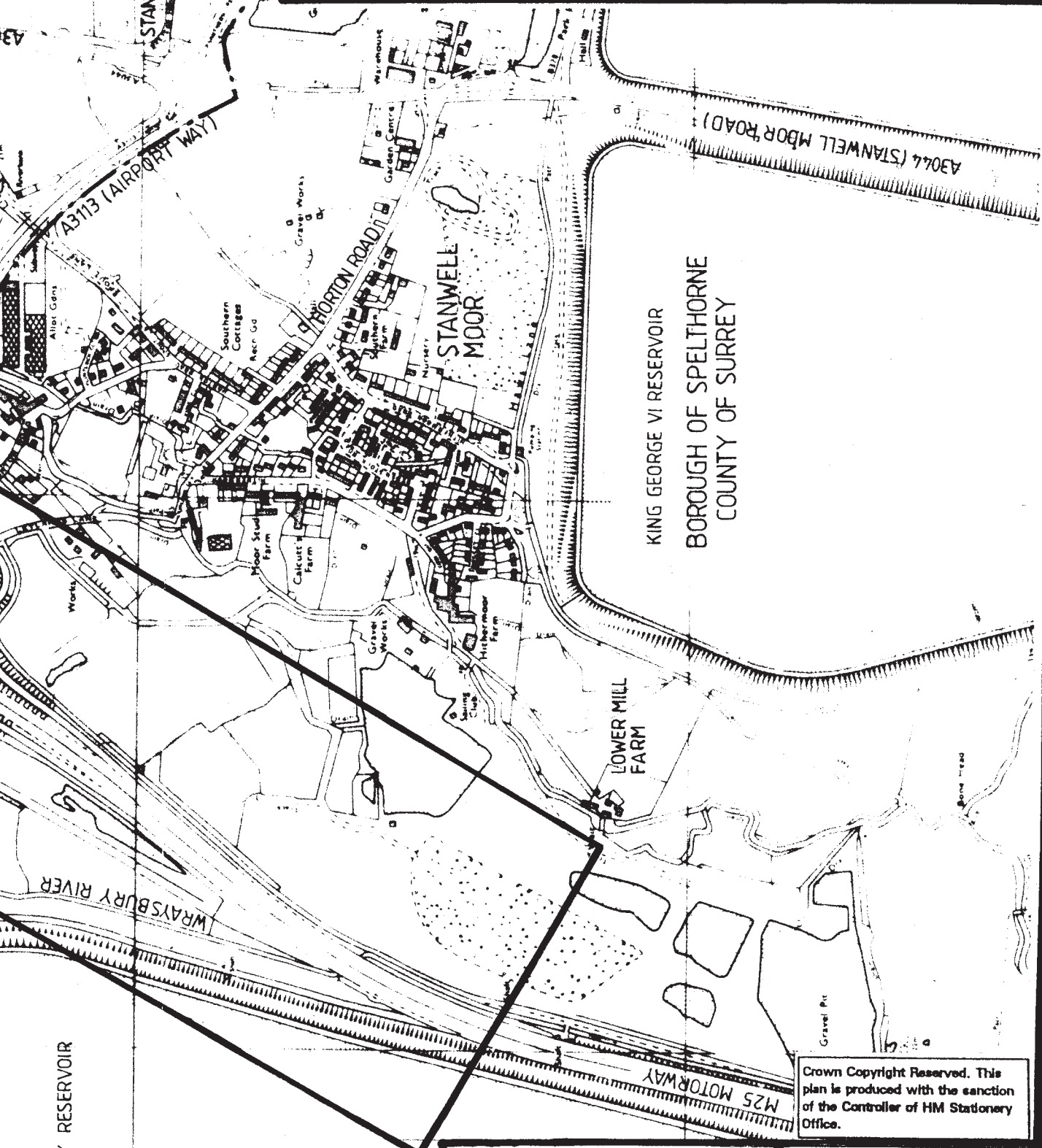
SCALE 1:2,500



SITE PLAN
2

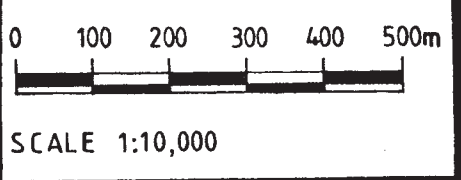


THE M25 MOTORWAY (HEATHROW TERMINAL 5 ACCESS) (Nº1) CONNECTING ROADS SCHEME 2002



KING GEORGE VI RESERVOIR
BOROUGH OF SPELTHORNE
COUNTY OF SURREY

Crown Copyright Reserved. This plan is produced with the sanction of the Controller of HM Stationery Office.



KEY PLAN

WRAYSBURY RESERVOIR

STANWELL MOOR ROUNDABOUT

A3113 (AIRPORT WAY)

HORTON ROAD

STANWELL MOOR

LOWER MILL FARM

A3046 (STANWELL MOOR ROAD)

M25 MOTORWAY

Gravel Pit

Bene trees

SCHEDULE

Routes of the connecting roads

The routes of the connecting roads are in the Parish of Colnbrook with Poyle, in the Borough of Slough; in Staines, in the Borough of Spelthorne, in the Country of Surrey; and near Longford, in the London Borough of Hillingdon, and are as follows:

1. From a point 27 metres west of the M25 centreline 168 metres north of the centre of Wraysbury River Culvert; to a point 240 metres east of the M25 centreline 462 metres south of centre of Wraysbury River Underbridge, and shown as 1, on site Plan 1;
2. From a point 25 metres east of the A3044 eastern boundary fence and 519 metres south of the centre of Longford (A3044/Bath Road) roundabout, to a point 27 metres east of the M25 centreline 145 metres north of centre of Wraysbury River Culvert, and shown as 2, on site Plans 1 and 2;
3. From a point 45 metres west of the M25 centreline 430 metres north of the centre of Wraysbury River Culvert, to a point at the southern outer edge of M25 J14 roundabout 100 metres south of entry to Horton Road west of M25 Motorway, and shown as 3, on site Plan 1;
4. From a southern outer edge of M25 J14 roundabout 45 metres west of exit from Horton Road east of M25 motorway, to a point 45 metres east of the M25 centreline 385 metres north of centre of Wraysbury River Culvert, and shown as 4, on site Plan 1;
5. From the northern outer edge of M25 J14 roundabout 42 metres east of exit from Horton Road west of M25 motorway, to a point 32 metres west of the M25 centreline 562 metres south of centre of Wraysbury River Underbridge, and shown as 5, on site Plan 1;
6. From a point 40 metres east of the M25 centreline 198 metres south of centre of Wraysbury River Underbridge, to a point at the northern outer edge of M25 J14 roundabout 14 metres west of exit from Horton Road east of M25 motorway, and shown as 6, on site Plan 1;
7. From a point 266 metres east of the M25 centreline 476 metres south of centre of Wraysbury River Underbridge, to a point west of the M25 centreline 255 metres south of centre of Wraysbury River Underbridge, and shown as 7, on site Plan 1;
8. From a point 20 metres east of the M25 centreline 4 metres south of the southern parapet of the Bath Road Bridge, to a point 17 metres east of the A3044 eastern boundary fence and 498 metres south of centre of Longford (A3044/Bath Road) Roundabout, and shown as 8, on site Plans 1 and 2.

£2.00

© Crown copyright 2002

Printed and published in the UK by The Stationery Office Limited
under the authority and superintendence of Carol Tullo, Controller of
Her Majesty's Stationery Office and Queen's Printer of Acts of Parliament.
E 0098 2/2002 120098 19585

ISBN 0-11-039355-4



9 780110 393551