
STATUTORY INSTRUMENTS

1996 No. 1178

HIGHWAYS, ENGLAND AND WALES

The County Council of Northumberland (Duplicate North Seaton Bridge) Scheme 1995 Confirmation Instrument 1996

Made - - - - 18th April 1996

The Secretary of State for Transport makes this Instrument in exercise of powers conferred by section 106(3) of the Highways Act 1980⁽¹⁾ and now vested in him⁽²⁾ and of all other powers enabling him in that behalf:

1. This Instrument may be cited as “the County Council of Northumberland (Duplicate North Seaton Bridge) Scheme 1995 Confirmation Instrument 1995” and shall come into force on the date on which notice that it has been confirmed is first published in accordance with paragraph 1 of Schedule 2 to the Highways Act 1980.

2. The County Council of Northumberland (Duplicate North Seaton Bridge) Scheme 1995 (“the Scheme”) is hereby confirmed with modifications.

3. The Scheme as confirmed is set out in the Schedule hereto and copies of the Scheme with its accompanying plans as modified are deposited at the offices of the Department of Transport, Great Minister House, 76 Marsham Street, London SW1P 4DR, and at the offices of the Council of Northumberland County Council, County Hall, Morpeth, Northumberland NE61 2EF.

Signed by authority of the Secretary of State for Transport

Pamela Denham
Regional Director, Government Office for the
North East

18th April 1996

(1) 1980 c. 66.
(2) SI 1981/238.

Status: This is the original version (as it was originally made). This item of legislation is currently only available in its original format.

THE SCHEDULE

The County Council of Northumberland (Duplicate North Seaton Bridge) Scheme 1995
The County Council of Northumberland (hereinafter referred to as “the Council”) make this Scheme in exercise of their powers under Section 106(3) of the Highways Act 1980 and of all other powers enabling them in that behalf—

1. The Council are authorised to construct over the navigable waters of the River Wansbeck the bridge specified in the Schedule to this scheme as part of the highway which they are proposing to improve or construct between North Seaton and East Sleekburn in the District of Wansbeck in the said County.

2. This scheme may be cited as the County Council of Northumberland (Duplicate North Seaton Bridge) Scheme 1995.

THE SCHEDULE TO THE SCHEME

PLANS AND SPECIFICATIONS OF THE DUPLICATE NORTH SEATON BRIDGE

The location and general design of the Bridge are shown on the plan numbered 1204/B/A189/35W/5 marked “The County Council of Northumberland (Duplicate North Seaton Bridge) Scheme 1995”, sealed with the Common Seal of the Council and deposited at County Hall, Morpeth, Northumberland, NE61 2EF and at the offices of the Secretary of State for Transport.

POINTS OF COMMENCEMENT AND TERMINATION

From a point on the South bank of the River Wansbeck, 500 metres north of the centre line of the C403.

To a point on the North bank of the River Wansbeck, 1100 metres south of the centre line of the B1334.

SPANS

One span at the North end of 24.8 metres.

One span at the South end of 24.8 metres.

Four central spans of 32.2 metres.

HEADWAY

Not less than 7.84 metres above the mean high water Spring tide level (MHWS) of 2.44 metres A.O.D.

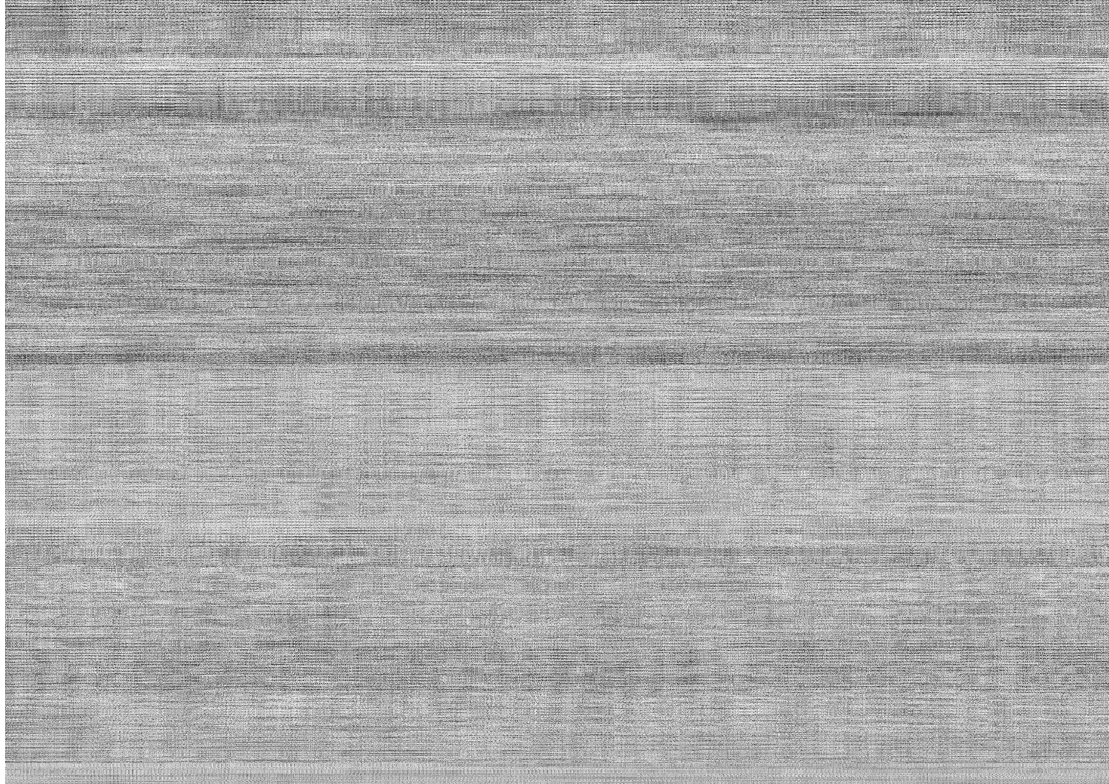
WATERWAY

A minimum clear navigable waterway of 26.5 metres.

Status: This is the original version (as it was originally made). This item of legislation is currently only available in its original format.

OVERALL DIMENSIONS

The bridge will be 178.4 metres in length and will carry a 7.3 metre wide carriageway with a one metre wide hard strip at each side and a 3.0 metre wide path on the western side for the use of pedestrians, cyclists and horse riders.



THE COMMON SEAL of THE COUNCIL was hereunto affixed in the presence of—

B M Trobe,
Chairman

T E Davy,
Duly Authorised Officer