

This Statutory Instrument has been printed in substitution of the S.I. of the same number and is being issued free of charge to all known recipients of that Statutory Instrument.

STATUTORY INSTRUMENTS

1995 No. 1946

HIGHWAYS, ENGLAND AND WALES

The A30 Trunk Road (Kennards House Junction Improvement and Slip Roads) Order 1995

Made - - - - *18th July 1995*

Coming into force - - *23rd August 1995*

The Secretary of State for Transport makes this Order in exercise of powers conferred by sections 10 and 41 of the Highways Act 1980(1) and now vested in him(2), and of all other powers enabling him in that behalf:—

1. This Order may be cited as the A30 Trunk Road (Kennards House Junction Improvement and Slip Roads) Order 1995 and shall come into force on 23rd August 1995.

2. In this Order—

(a) all measurements of distance are measured along the route of the relevant highway;

(b) (i) “the new trunk roads” means the slip roads;

(ii) “the plan” means the plan numbered HA10/1/SWD/123 marked “The A30 Trunk Road (Kennards House Junction Improvement and Slip Roads) Order 1995”, signed by authority of the Secretary of State for Transport and deposited at the Highways Agency, St Christopher House, Southwark Street, London SE1 0ET; and

(iii) “the slip roads” means the new highways which the Secretary of State proposes to construct along the routes described in the Schedule to this Order and which connect the existing trunk road with other high-ways at the places stated in that Schedule.

(1) 1980 c. 66.
(2) S.I. 1981/238.

Status: This is the original version (as it was originally made). This item of legislation is currently only available in its original format.

3. The slip roads shall become trunk roads from the date when this Order comes into force.
4. The centre line of each of the new trunk roads is indicated by a heavy black line on the plan.
5. The Secretary of State directs as respects any part of a highway which crosses the route of any of the new trunk roads that—
 - (a) where the highway is maintainable at the public expense by a local highway authority the part in question shall be maintained by that authority; and
 - (b) where the highway is not so maintainable and is not maintainable under a special enactment or by reason of tenure, enclosure or prescription, the Secretary of State shall be under no duty to maintain the part in question,

until, in either case, a date to be specified in a notice given by the Secretary of State to the highway authority for that highway. The date specified will not be later than the date on which the relevant route is opened for traffic.

Signed by the authority of the Secretary of State for Transport

Highways Agency
18th July 1995

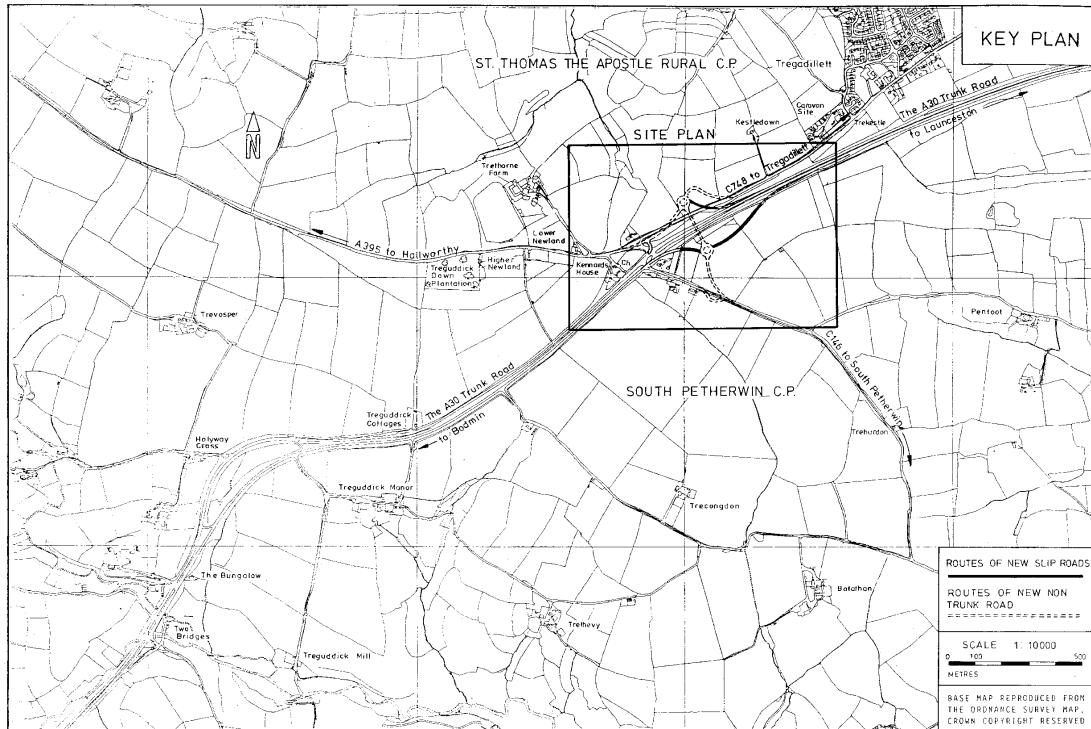
M. A. Endacott
Head of South West Sub Office Southern
Network Management Division

Status: This is the original version (as it was originally made). This item of legislation is currently only available in its original format.

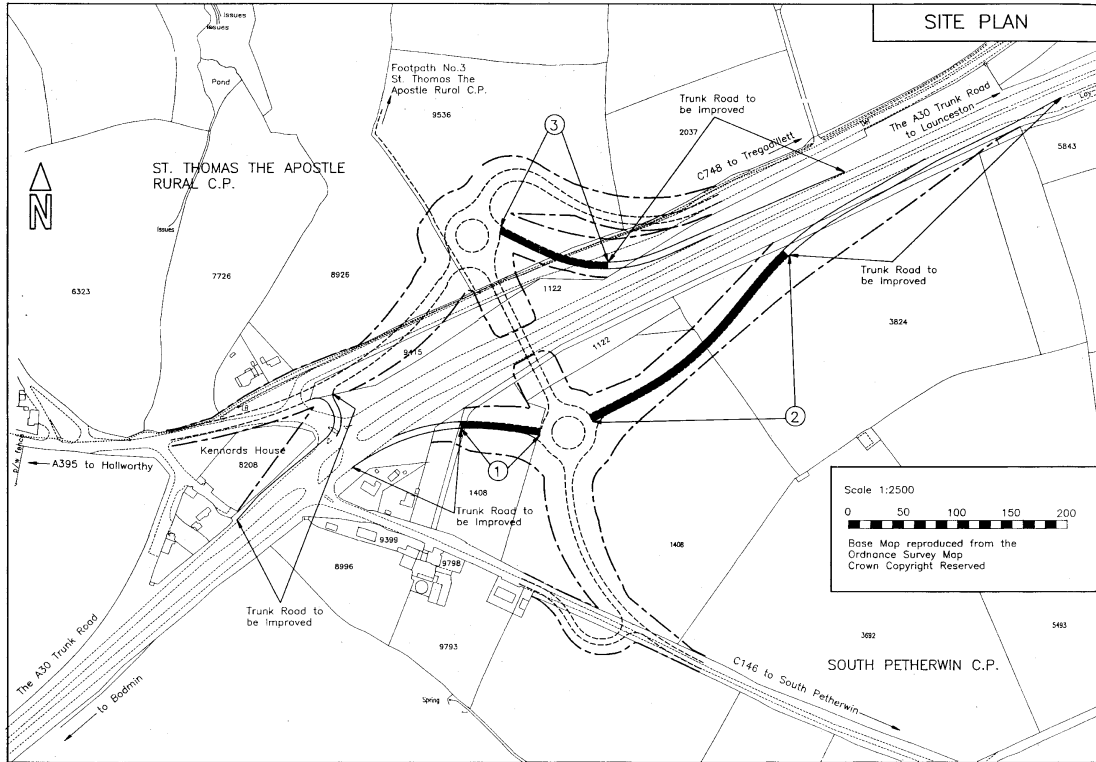
THE SCHEDULE

ROUTES OF THE SLIP ROADS

The routes of the slip roads are three routes to connect the existing trunk road with the A395, the C146 and the C748, all at Kennards House in the County of Cornwall, by means of two roundabouts which he proposes to construct as part of the improvement of the existing Kennards House junction (the slip roads along these routes being given the numbers 1, 2 and 3 on the plan).



Status: This is the original version (as it was originally made). This item of legislation is currently only available in its original format.



Status: This is the original version (as it was originally made). This item of legislation is currently only available in its original format.

<h1>PLAN FOLIO</h1> <h2>THE A30 TRUNK ROAD</h2> <p>(KENNARDS HOUSE JUNCTION IMPROVEMENT AND SLIP ROADS)</p> <h3>ORDER 1995</h3>		
<p>THIS PLAN IS REPRODUCED WITH THE SANCTION OF THE CONTROLLER OF H.M. STATIONERY OFFICE</p> <p>IT DOES NOT SHOW WIDTHS OR CONSTRUCTIONAL DETAILS OF THE PROPOSED ROADS</p>		
<p>SCALES: — KEY PLAN 1:10,000 SITE PLAN 1:2500</p>		
<p>ROUTES OF THE NEW SLIP ROADS</p> <p>EXISTING OR IMPROVED TRUNK ROAD</p> <p>ROUTES OF NEW NON-TRUNK ROADS</p> <div style="text-align: right;"><p>THE A30 TRUNK ROAD</p><p>DUAL SINGLE</p></div>		
<p>NOTE</p> <p>UNITS OF LENGTH</p> <p>1 km = 0.621 mile (approx)</p> <p>1 m = 1.094 yd (approx)</p>	<p>PLANS REGISTRY</p> <p>No: <i>HA10/1/SW/123</i></p> <p>DATE: <i>JULY 1995</i></p>	<p>SIGNED BY AUTHORITY OF THE SECRETARY OF STATE FOR TRANSPORT.</p> <p><i>ma E. E. E. 18 July 1995</i></p> <p>HEAD OF SOUTHWEST SUB OFFICE DIRECTOR SOUTHERN NETWORK SOUTH WEST NETWORK MANAGEMENT DIVISION HIGHWAYS AGENCY</p>