

**Status:** This is the original version (as it was originally made). This item of legislation is currently only available in its original format.

## SCHEDULE 13

Regulation 13(6)

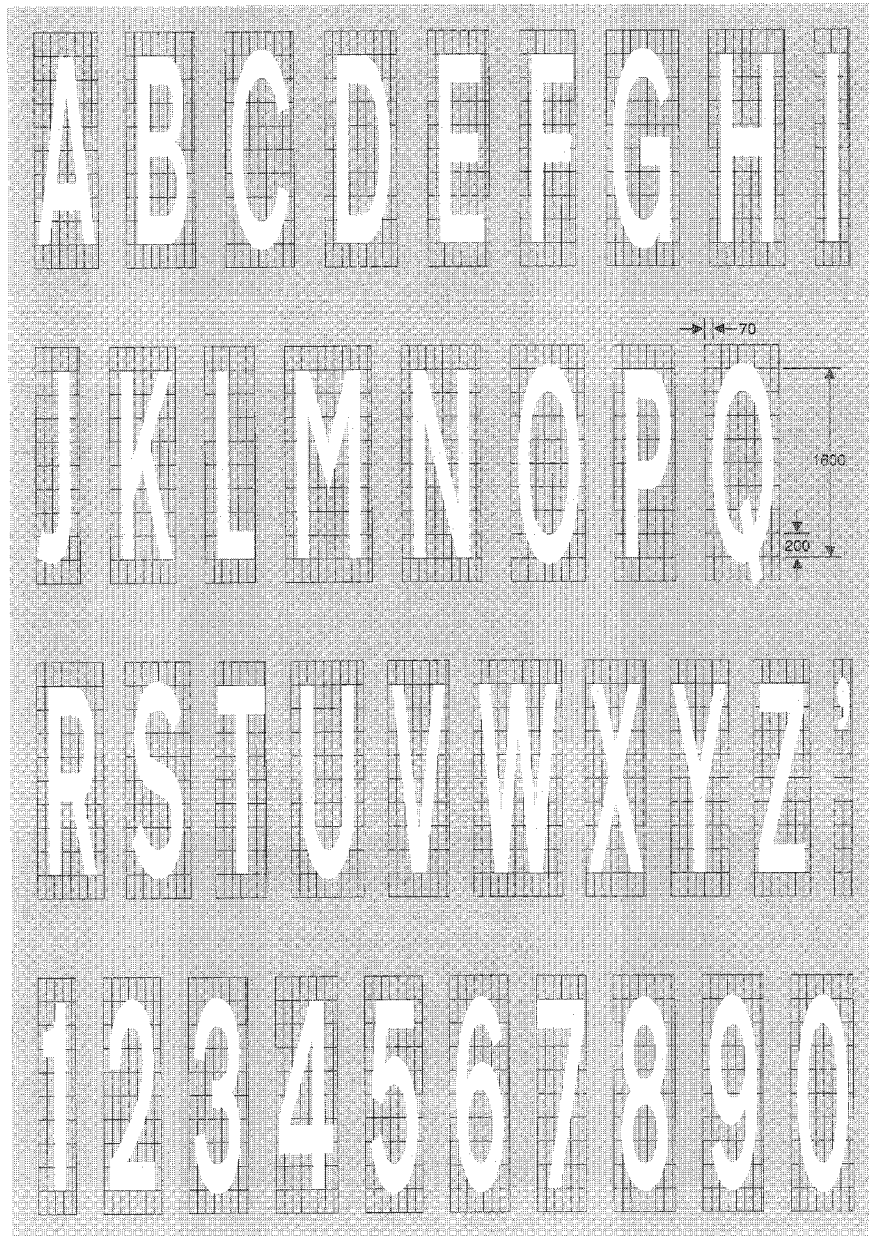
**Status:** This is the original version (as it was originally made). This item of legislation is currently only available in its original format.

## PART VI

### PROPORTIONS AND FORM OF LETTERS, NUMERALS AND OTHER CHARACTERS FOR USE IN THE ROAD MARKINGS SHOWN IN SCHEDULE 6

(a) with a height of 1.6 metres

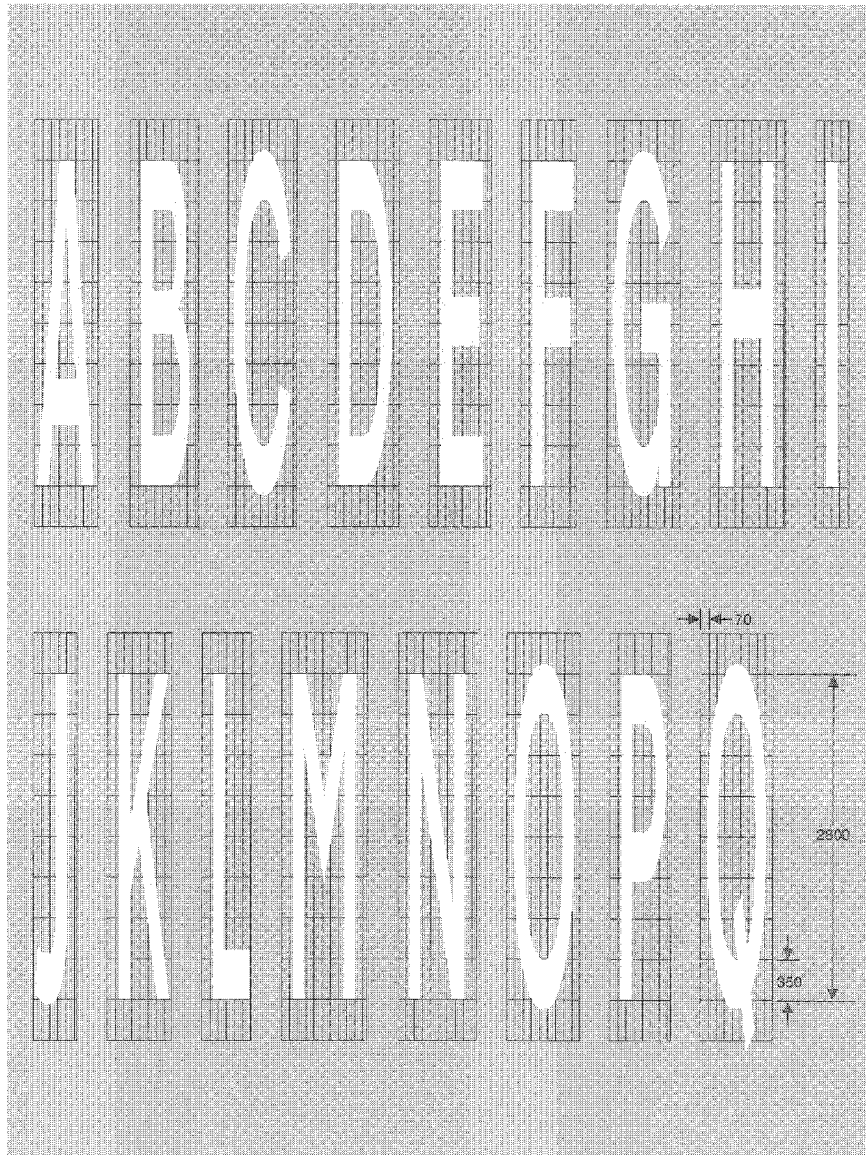
SCHEDULE 13 PART VI Regulation 13(6)  
PROPORTIONS AND FORM OF LETTERS, NUMERALS AND OTHER CHARACTERS FOR USE IN THE ROAD MARKINGS SHOWN IN SCHEDULE 6  
(a) with a height of 1.8 metres



**Status:** This is the original version (as it was originally made). This item of legislation is currently only available in its original format.

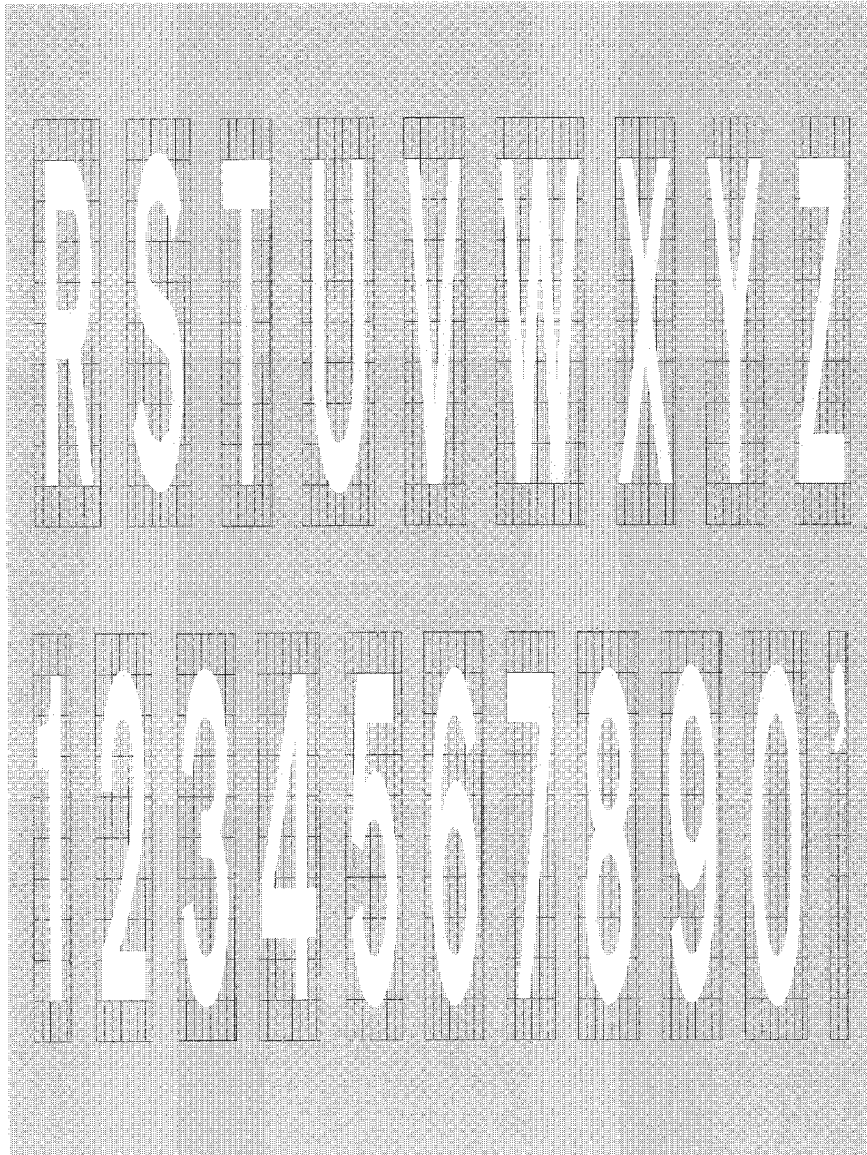
(b) with a height of 2.8 metres

SCHEDULE 13 PART VI Regulation 13(8)  
PROPORTIONS AND FORM OF LETTERS, NUMERALS AND OTHER  
CHARACTERS FOR USE IN THE ROAD MARKINGS SHOWN IN SCHEDULE 6  
(b) with a height of 2.8 metres



**Status:** This is the original version (as it was originally made). This item of legislation is currently only available in its original format.

SCHEDULE 13 PART VI PROPORTIONS AND FORM OF LETTERS, NUMERALS AND OTHER CHARACTERS FOR USE IN THE ROAD MARKINGS SHOWN IN SCHEDULE 6 (contd.)  
(b) with a height of 2.8 metres



**Status:** This is the original version (as it was originally made). This item of legislation is currently only available in its original format.

*(c) for use in the road markings shown in diagrams  
1027.1, 1028.2, 1028.3, 1028.4, 1029 and 1033*

SCHEDULE 13 PART VI Regulation 13(6)  
PROPORTIONS AND FORM OF LETTERS, NUMERALS AND OTHER CHARACTERS  
FOR USE IN THE ROAD MARKINGS SHOWN IN SCHEDULE 6  
(c) for use in the road markings shown in diagrams 1027.1, 1028.2, 1028.3, 1028.4, 1029 and 1033

