
STATUTORY INSTRUMENTS

1992 No. 3327

HIGHWAYS, ENGLAND AND WALES

The Borough Council of Sandwell (Black Country Spine Road) (Ryders Green Locks Canal Bridge) Scheme 1992 Confirmation Instrument 1992

Made - - - - 22nd December
1992

The Secretary of State for Transport makes this Instrument in exercise of power conferred by sections 106(3) and 108(4) of the Highways Act 1980(1), and now vested in him (2), and all other enabling powers:—

1. The Borough Council of Sandwell (Black Country Spine Road) (Ryders Green Locks Canal Bridge) Scheme 1992 Confirmation Instrument 1992 is hereby confirmed without modifications.

2. The said Scheme as confirmed (hereinafter referred to as “the Scheme”) is set out in the schedule hereto and copies of the Scheme with its accompanying plans are deposited at the offices of the Department of Transport, Romney House, 43 Marsham Street, London SW1P 3PY and at the offices of the Borough Council of Sandwell, Sandwell Council Office, Oldbury, Warley, West Midlands.

3. The Scheme will become operative on the date on which notice that it has been confirmed is first published in accordance with paragraph 1 of schedule 2 to the Highways Act 1980.

4. This instrument may be cited as the Borough Council of Sandwell (Black Country Spine Road) (Ryders Green Locks Canal Bridge) Scheme 1992 Confirmation Instrument 1992.

Signed by authority of the Secretary of State for Transport

22nd December 1992

P. A. Shaw
Regional Director, Northern Region,
Department of Transport

(1) 1980 c. 66.
(2) S.I.1981/238.

Status: This is the original version (as it was originally made). This item of legislation is currently only available in its original format.

THE SCHEDULE

SANDWELL METROPOLITAN BOROUGH COUNCIL

THE BOROUGH COUNCIL OF SANDWELL (BLACKWELL COUNTRY SPINE ROAD) (RYDERS GREEN LOCKS CANAL BRIDGE) SCHEME 1992

The Borough Council of Sandwell (hereinafter referred to as “The Council”) make this scheme in exercise of their powers under sections 106(3) and 108(4) of the Highways Act 1980 and of all other enabling powers:—

1. The Council are authorised to construct over the navigable waters of the Walsall Canal at the Ryders Green Locks, Great Bridge, the bridge specified in the schedule as part of the highway to be known as The Black Country Spine Road which they are proposing to construct between Holyhead Road roundabout, Wednesbury and Carters Green, West Bromwich in the said Borough.
2. The Council are also authorised in connection with the construction of the said bridge to divert part of the navigable watercourse specified in the said schedule.
3. This Scheme may be cited as the Borough Council of Sandwell (Black Country Spine Road) (Ryders Green Locks Canal Bridge) Scheme 1992.

SCHEDULE

LOCATION

The bridge will span the Walsall Canal at Ryders Green Locks approximately 100 metres north west of Brickhouse Lane Canal Bridge at Great Bridge in the Borough of Sandwell.

DIMENSIONS

Span — The minimum clear span of the bridge will be 17 metres.

Waterway — The minimum width of the waterway will be 10 metres and a 5.5 metres towpath will be provided on the south western side with a 1.5 metres maintenance strip on the north eastern side.

Headroom — The minimum headroom provided over the 10 metre width of waterway will be 3.5 metres above the lock overflow invert level of 125.56 metres above ordnance datum.

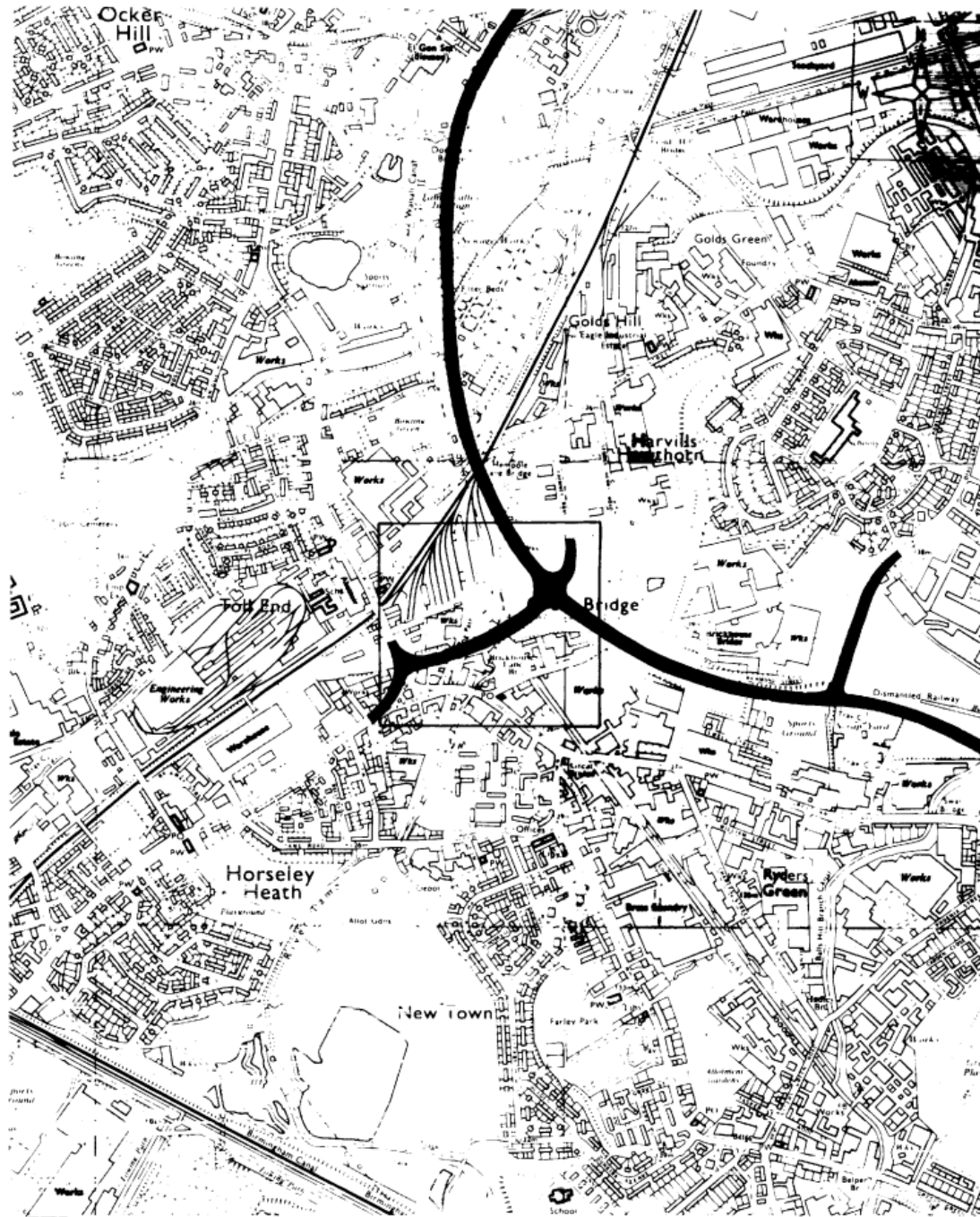
DIVERSION OF WATERCOURSE

Walsall Canal.

PARTICULARS OF DIVERSION

The existing channel width varies between 14 metres and 23 metres approximately and will be reduced to a minimum width of 10 metres over a length of 55 metres approximately to facilitate the construction of the bridge.

Status: This is the original version (as it was originally made). This item of legislation is currently only available in its original format.



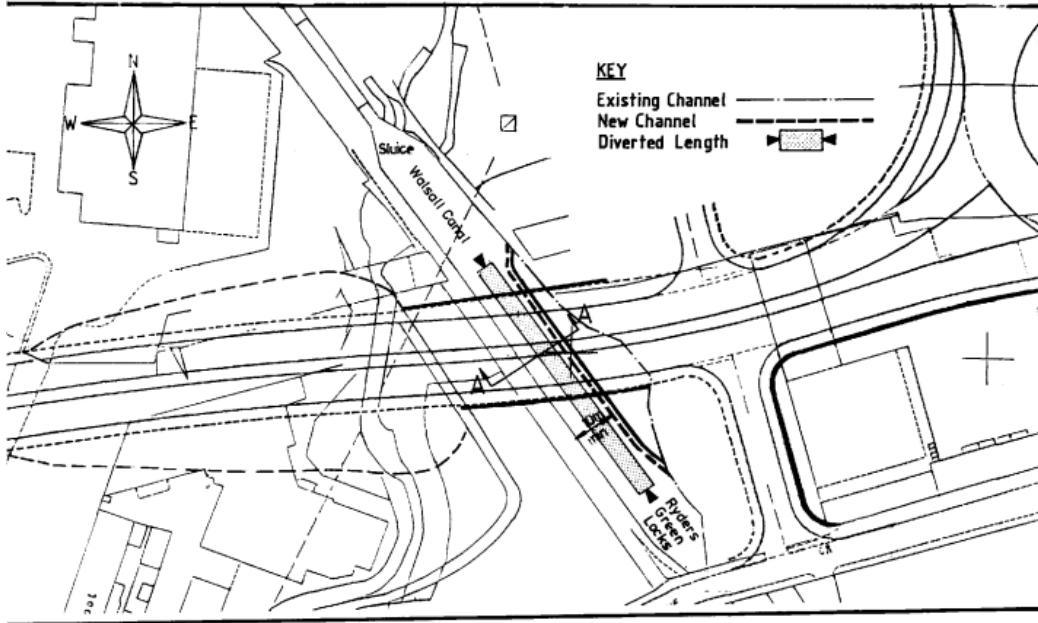
BLACK COUNTRY SPINE ROAD

RYDERS GREEN LOCKS CANAL BRIDGE

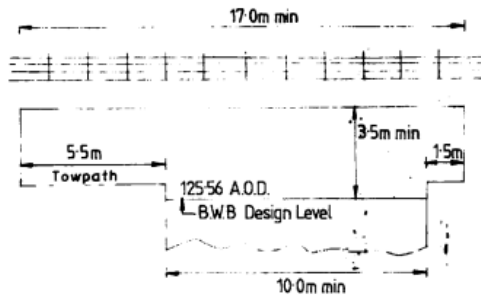
LOCATION PLAN

SCALE	1:10000
DATE	FEBRUARY 1992
ISSUED BY	CH. ENGINEER
NEGATIVE No.	CH/200/469
DRAWING No.	CH/200/469/174

Status: This is the original version (as it was originally made). This item of legislation is currently only available in its original format.



PLAN
Scale 1:1250



SECTION A-A
Scale 1:200



BLACK COUNTRY SPINE ROAD
RYDERS GREEN LOCKS CANAL BRIDGE
PLAN AND SECTION

SCALE	AS SHOWN
DATE	FEBRUARY 1992
ISSUED BY	CH.ENGINEER
NEGATIVE No.	CH/200/ 505
DRAWING No.	CH/200/505/510

Status: *This is the original version (as it was originally made). This item of legislation is currently only available in its original format.*

The Common Seal of the Borough Council of Sandwell was hereunto affixed this 27 day of March 1992 in the presence of:—

L.S.

S. J. Cork
Senior Assistant Borough Secretary