

1989 No. 2352

**LOCAL GOVERNMENT, ENGLAND AND WALES**

**CHANGES IN LOCAL GOVERNMENT AREAS**

**The Essex and Suffolk (County Boundaries) Order 1989**

<i>Made - - - -</i>	<i>13th December 1989</i>
<i>Laid before Parliament</i>	<i>20th December 1989</i>
<i>for the purposes referred to in article 1(2)</i>	<i>10th January 1990</i>
<i>for all other purposes</i>	<i>1st April 1990</i>

The Secretary of State, in exercise of his powers under sections 51(2) and 67(4) of the Local Government Act 1972(a) and of all other powers enabling him in that behalf, hereby makes the following Order which gives effect to proposals submitted to him under sections 47, 48(1) and 51(1) of that Act, more than six weeks before the making of this Order, by the Local Government Boundary Commission for England:

**Citation and commencement**

1.—(1) This Order may be cited as the Essex and Suffolk (County Boundaries) Order 1989.

(2) This Order shall come into force on 10th January 1990 for any purpose set out in regulation 4(1) (coming into operation of order) of the Local Government Area Changes Regulations 1976(b).

(3) For all other purposes this Order shall come into force on 1st April 1990.

**Interpretation**

2. In this Order “boundary map” means one of the 6 maps prepared by the Department of the Environment, marked “Maps of the Essex and Suffolk (County Boundaries) Order 1989”, duly numbered for reference, and deposited in accordance with regulation 5 of the Local Government Area Changes Regulations 1976.

**Transfers from Essex to Suffolk**

3.—(1) The parts of the county of Essex, the district of Braintree and the parish of Bulmer marked A8 and A9 on boundary map 3 shall be transferred to—

- (a) the county of Suffolk and the Sudbury electoral division of that county;
- (b) the district of Babergh and the Sudbury South ward of that district;
- (c) the parish of Sudbury and the Sudbury South ward of that parish;
- (d) the Sudbury and Cosford petty sessional division;
- (e) the West Suffolk Coroner’s district.

---

(a) 1972 c. 70.

(b) S.I. 1976/246, amended by S.I. 1978/247.

- (2) The parts of the county of Essex, the district of Braintree and the parish of Middleton marked A17, A18 and A19 on boundary map 4 shall be transferred to—
- (a) the county of Suffolk and the Great Cornard electoral division of that county;
  - (b) the district of Babergh and the Great Cornard South ward of that district;
  - (c) the parish of Great Cornard and the Great Cornard South ward of that parish;
  - (d) the Sudbury and Cosford petty sessional division;
  - (e) the West Suffolk Coroner's district.
- (3) The part of the county of Essex, the district of Braintree and the parish of Sturmer marked A1 on boundary map 1 shall be transferred to—
- (a) the county of Suffolk and the Haverhill South electoral division of that county;
  - (b) the borough of St. Edmundsbury and the St. Mary's and Helions ward of that borough;
  - (c) the parish of Haverhill and the St. Mary's and Helions ward of that parish;
  - (d) the Risbridge petty sessional division;
  - (e) the West Suffolk Coroner's district.
- (4) The parts of the county of Essex, the borough of Colchester and the parish of Great Horkelesley marked A20 and A21 on boundary map 5 shall be transferred to—
- (a) the county of Suffolk and the Stour Valley electoral division of that county;
  - (b) the district of Babergh and the Nayland ward of that district;
  - (c) the parish of Nayland-with-Wissington;
  - (d) the Sudbury and Cosford petty sessional division;
  - (e) the West Suffolk Coroner's district.

#### **Transfers from Suffolk to Essex**

- 4.—(1) The parts of the county of Suffolk, the district of Babergh and the parish of Great Cornard marked A14, A15 and A16 on boundary map 4 shall be transferred to—
- (a) the county of Essex and the Halstead electoral division of that county;
  - (b) the district of Braintree and the Stour Valley South ward of that district;
  - (c) the parish of Middleton;
  - (d) the Halstead and Hedingham petty sessional division;
  - (e) the Essex No. 1 Coroner's district.
- (2) The part of the county of Suffolk, the district of Babergh and the parish of Stratford St. Mary marked A22 on boundary map 6 shall be transferred to—
- (a) the county of Essex and the Constable electoral division of that county;
  - (b) the borough of Colchester and the Dedham ward of that borough;
  - (c) the parish of Dedham;
  - (d) the Colchester petty sessional division;
  - (e) the Essex No. 1 Coroner's district.
- (3) The parts of the county of Suffolk, the district of Babergh and the parish of Sudbury marked A4, A5 and A6 on boundary map 3 shall be transferred to—
- (a) the county of Essex and the Hedingham electoral division of that county;
  - (b) the district of Braintree and the Stour Valley Central ward of that district;
  - (c) the parish of Bulmer;
  - (d) the Halstead and Hedingham petty sessional division;
  - (e) the Essex No. 1 Coroner's district.
- (4) The parts of the county of Suffolk, the district of Babergh and the parish of Sudbury marked A7 and A13 on boundary maps 3 and 4 shall be transferred to—
- (a) the county of Essex and the Halstead electoral division of that county;
  - (b) the district of Braintree and the Stour Valley South ward of that district;
  - (c) the parish of Middleton;
  - (d) the Halstead and Hedingham petty sessional division;
  - (e) the Essex No. 1 Coroner's district.

(5) The parts of the county of Suffolk, the borough of St. Edmundsbury and the parish of Haverhill marked A2 and A3 on boundary map 2 shall be transferred to—

- (a) the county of Essex and the Hedingham electoral division of that county;
- (b) the district of Braintree and the Bumpstead ward of that district;
- (c) the parish of Sturmer;
- (d) the Halstead and Hedingham petty sessional division;
- (e) the Essex No. 1 Coroner's district.

#### **Transfer within the county of Essex**

5. The area marked A10 on boundary map 3 shall be transferred—

- (a) from the parish of Bulmer to the parish of Middleton;
- (b) from the Stour valley Central ward of the district of Braintree to the Stour Valley South ward of that district;
- (c) from the Hedingham electoral division of the county of Essex to the Halstead electoral division of that county.

#### **Transfers within the county of Suffolk**

6.—(1) The area marked A12 on boundary map 4 shall be transferred—

- (a) from the parish of Great Cornard to the parish of Sudbury, and to the Sudbury South ward of that parish;
- (b) from the Great Cornard North ward of the district of Babergh to the Sudbury South ward of that district;
- (c) from the Great Cornard electoral division of the county of Suffolk to the Sudbury electoral division of that county.

(2) the area marked A11 on boundary map 4 shall be transferred—

- (a) from the parish of Sudbury to the parish of Great Cornard, and to the Great Cornard North ward of that parish;
- (b) from the Sudbury South ward of the district of Babergh to the Great Cornard North ward of that district;
- (c) from the Sudbury electoral division of the county of Suffolk to the Great Cornard electoral division of that county.

#### **Town and country planning**

7. Any provisions of a structure plan, an old development plan (within the meaning of paragraph 2 of Schedule 7 to the Town and Country Planning Act 1971(a)) or a local plan made or adopted by a county or district council which apply immediately before 1st April 1990 to an area transferred by this Order shall continue to have effect in relation to that area as if they were part of such a plan made or adopted by the council of the county or district to which that area is transferred.

#### **Land registration**

8. Registration of title to land under the Land Registration Acts 1925 to 1986(b) shall—

- (a) cease to be compulsory on sale in the areas transferred by article 3 save insofar as section 154(1) of the Housing Act 1985(c), section 81(9) of 108 of and Schedule 12 to, or 133(8) of the Housing Act 1988(d) or section 173 of the Local Government and Housing Act 1989(e) applies to any land situated in those areas;
- (b) be compulsory on sale throughout the district of Braintree and the borough of Colchester as altered by article 4.

*David Heathcoat-Amory*

Signed by authority of the Secretary of State  
for the Environment  
13th December 1989

Parliamentary Under Secretary of State,  
Department of the Environment

(a) 1971 c.78.  
(c) 1985 c.68.  
(e) 1989 c.42.

(b) 1925 c.21, 1936 c.26, 1966 c.39, 1971 c.54, 1986 c.26.  
(d) 1988 c.50.

## EXPLANATORY NOTE

*(This note is not part of the Order)*

This Order transfers areas between the counties of Essex and Suffolk. Consequential changes to districts, parishes and local government electoral areas are made.

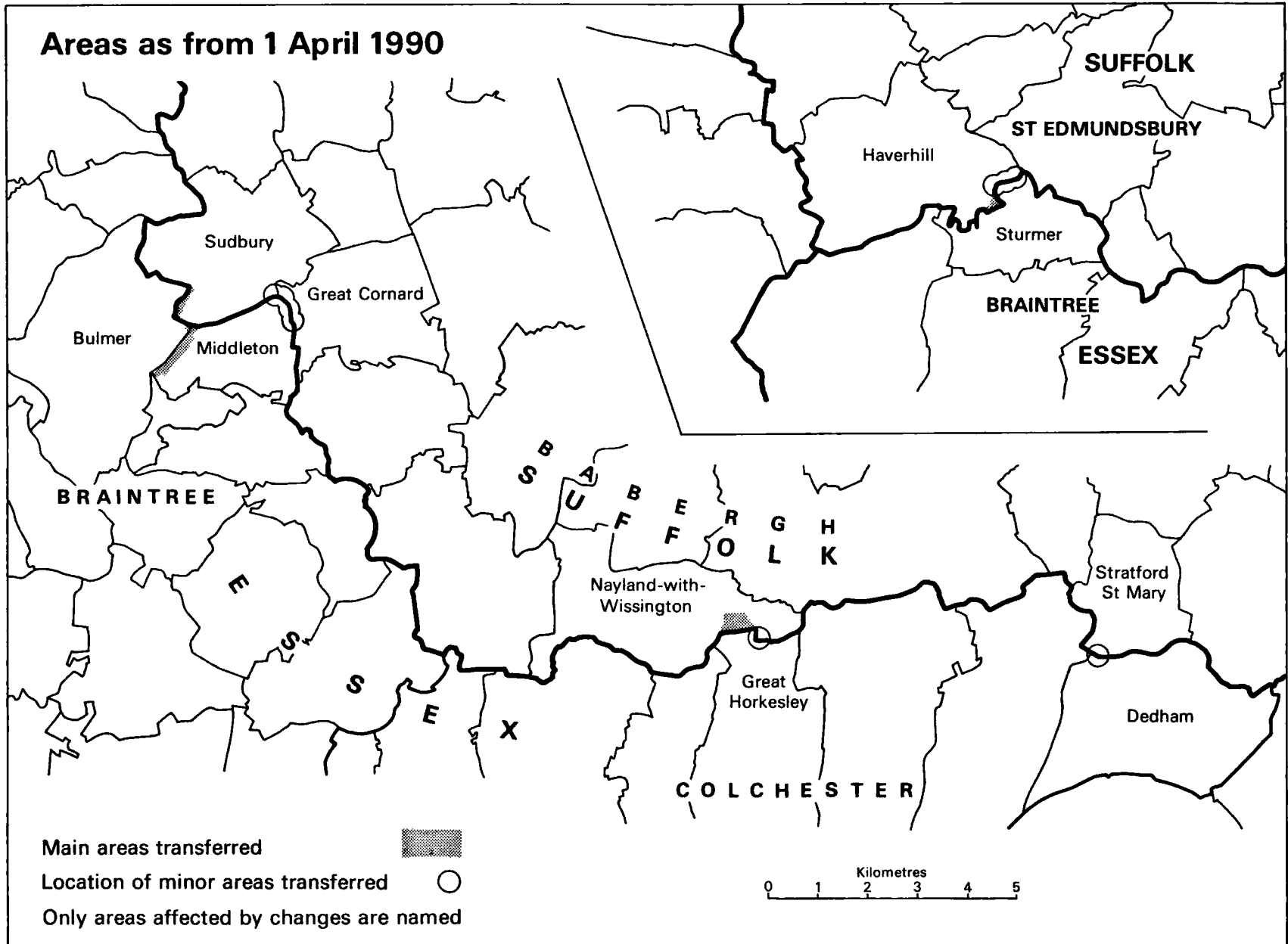
The map forming part of this note (page 5) gives a general guide to the areas affected. Prints of the detailed boundary maps (described in article 2) may be inspected at all reasonable times at the offices of the district councils whose areas are affected by this order, and at the office of the Secretary of State for the Environment, 2 Marsham Street, London SW1P 3EB.

The areas transferred have approximately the areas and populations shown below.

	<i>Area (hectares)</i>	<i>Population</i>
Essex to Suffolk	15.3	25
Suffolk to Essex	32.0	—

The Local Government Area Changes Regulations 1976 (S.I. 1976/246, amended by S.I. 1978/247) contain general provisions regarding the effect of orders such as this one.

# Areas as from 1 April 1990



Based on the Ordnance Survey map

Mapping and Graphic Services DOE