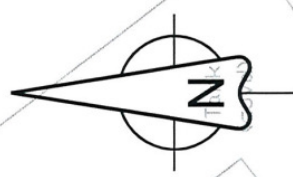
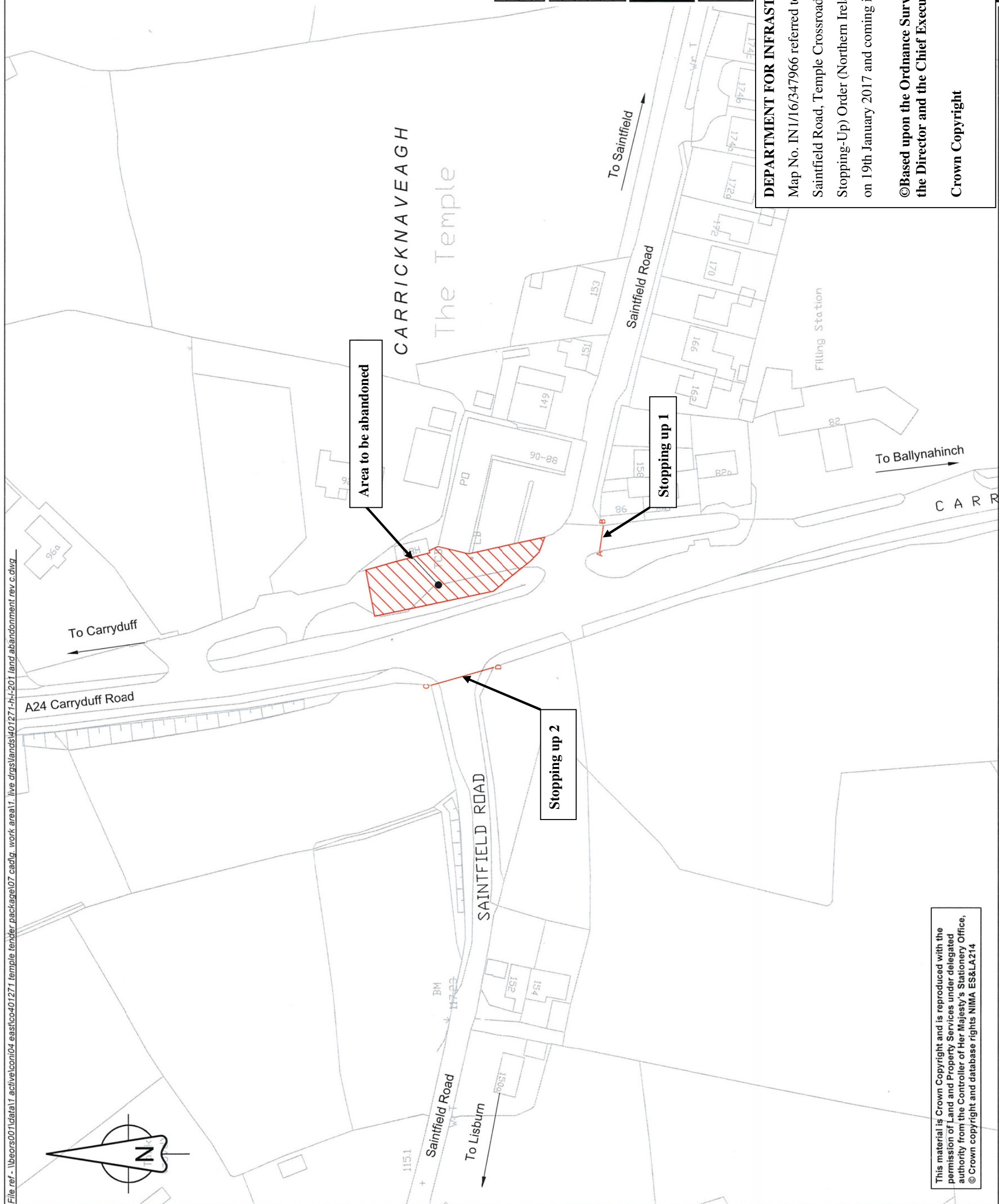


File ref - \\beors001\data1\active\com04_eastco401271\template\tenhter_package07_cadg_work_area1.live\drgs\lands\401271-hi-201 land abandonment.rev.c.dwg



KEY

- Abandonment
(Total Area = 890 m²)
- Stopping Up
(Length = 9m)
- Stopping Up
(Length = 23m)



Rev	Updated Aban Area	DK	PW	Nov 2015
C	Updated Aban Area	DK	PW	Nov 2015
B	Updated Aban Area	DK	PW	April 2015
A	Stopping Up	DK	PW	April 2015
	Revision details	Chkd	Appd	Date
Drawn:	FB			Preliminary
Design:	FB			For comment
Chkd:	DK			For tender
Appd:	PW			For construction
Date:	March 2015			As constructed
				Abandonment
				✓

www.amey.co.uk

transportni

Client
DRD Transport NI
Eastern Division
Hydebank 4 Hospital Road
Belfast BT8 8LL (028) 9025 3000

DEPARTMENT FOR INFRASTRUCTURE

Map No. IN1/16/347966 referred to in "The Carryduff Road and Saintfield Road, Temple Crossroads, Lisburn (Abandonment and Stopping-Up) Order (Northern Ireland) 2017" made by the Department on 19th January 2017 and coming into operation on 26th April 2017.

©Based upon the Ordnance Survey map with the Permission of the Director and the Chief Executive.

Crown Copyright

SCALE 1:1250

This material is Crown Copyright and is reproduced with the permission of Land and Property Services under delegated authority from the Controller of Her Majesty's Stationery Office, © Crown copyright and database rights NIMA ES&LA214