

Commission Regulation (EC) No 1529/1999 of 13 July 1999 concerning
the classification of certain goods in the combined nomenclature

COMMISSION REGULATION (EC) No 1529/1999
of 13 July 1999

concerning the classification of certain goods in the combined nomenclature

Article 1

The goods described in column 1 of the annexed table are now classified within the Combined Nomenclature under the appropriate CN codes indicated in column 2 of the said table.

Article 2

Subject to the measures in force in the Community relating to double checking systems and to prior and retrospective Community surveillance of textile products on importation into the Community, binding tariff information in the matter of classification of goods in the Combined Nomenclature issued by the customs authorities of the Member States which no longer conform to this Regulation may continue to be invoked in accordance with the provisions of Article 12(6) of Regulation (EEC) No 2913/92 for a period of 60 days.

Article 3

This Regulation shall enter into force on the 21st day following its publication in the *Official Journal of the European Communities*.

This Regulation shall be binding in its entirety and directly applicable in all Member States.

Status: Point in time view as at 04/06/2013.

Changes to legislation: There are currently no known outstanding effects for the Commission Regulation (EC) No 1529/1999. (See end of Document for details)

ANNEX

Description (1)	Classification CN code (2)	Grounds (3)
<p>1. Multicoloured garment made of a velvet knitted fabric of man-made fibres (80 % viscose, 20 % polyester), with more than 10 stitches per linear centimetre in each direction counted on an area measuring at least 10 cm × 10 cm.</p> <p>This garment is of a close-fitting cut and covers the upper part of the body to below the waist.</p> <p>The garment has long sleeves, a close-fitting neck with collar, a complete opening at the front buttoning right over left, a sewn-on pocket on the chest and side slits approximately 8 cm long at the bottom. The sleeve-ends and the bottom of the garment are hemmed.</p> <p>(Shirt-blouse) (See photograph No 584)^a</p>	6106 20 00	<p>Classification is determined by General Notes 1 and 6 for the interpretation of the Combined Nomenclature, Notes 4 and 9 to Chapter 61 and the wording of CN codes 6106 and 6106 20 00.</p> <p>See also the Combined Nomenclature Explanatory Notes to heading 6106</p>
<p>2. Single coloured knitted garment (70 % acrylic, 30 % polyester), intended to cover the upper part of the body, of a straight cut, reaching down to below the waist (66 cm), with long sleeves.</p> <p>It has a rounded neckline without an opening. It is bound round the neckline.</p> <p>(Garment similar to a pullover) (See photograph No 590)^a</p>	6110 30 99	<p>Classification is determined by the provisions of General Rules 1 and 6 for the interpretation of the Combined Nomenclature, Note 9 to Chapter 61 and the wording of CN codes 6110, 6110 30 and 6110 30 99.</p> <p>See also the Explanatory Notes to the Combined Nomenclature to heading 6110.</p> <p>Taking into account its cut, its general appearance and the nature of the fabric in which it is manufactured this garment is to be classified</p>

^a The photographs are purely for information.

Status: Point in time view as at 04/06/2013.

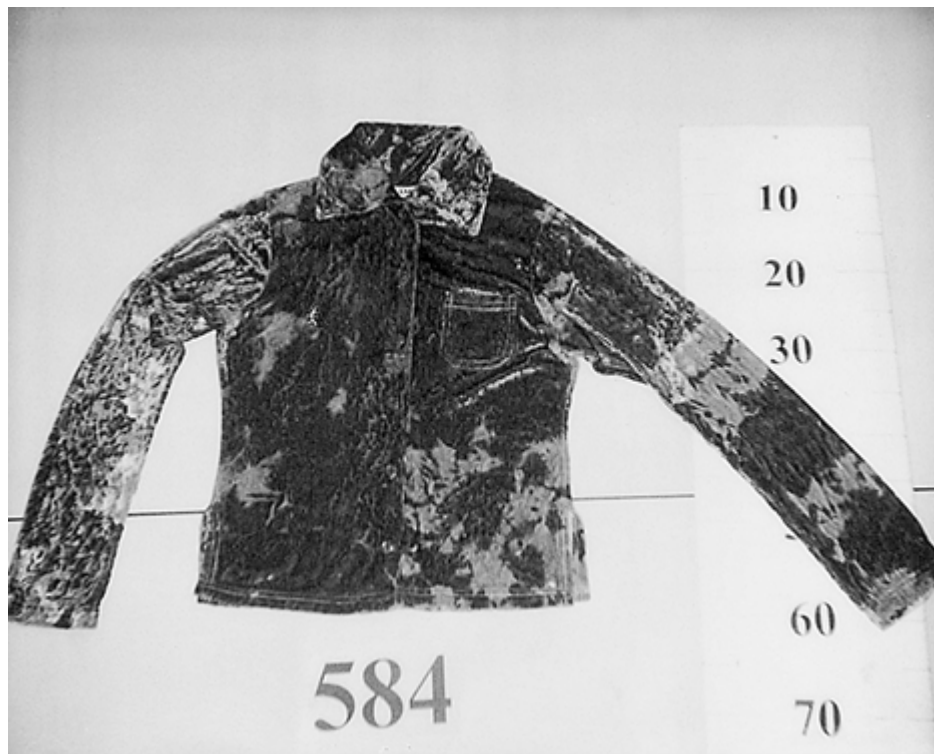
Changes to legislation: There are currently no known outstanding effects for the Commission Regulation (EC) No 1529/1999. (See end of Document for details)

		as a garment similar to a pullover
3.	<p>Carrying device made of aluminium tube and pieces of knitted and woven fabric (synthetic fibres) sewn together, consisting of a seat for a child with padding at the side and at head height, retention and carrying straps and, underneath, storage space for small objects.</p> <p>The surface of the seat (including the seat back), the integral hood, the small pocket-like receptacle under the seat and the carrying, lap and other straps are made of textile material.</p> <p>(Other made-up textile articles of woven fabric — baby carrier)</p>	<p>[^{F1}6307 90 98]</p> <p>Classification is determined by General Rules 1, 3(b) and 6 for the interpretation of the Combined Nomenclature, [^{F1}note 7(f)] to Section XI, Note 1 to Chapter 63, Note 2 to Chapter 94 and CN codes 6307, 6307 90 and [^{F1}6307 90 98].</p> <p>This product does not have the characteristics of a sack and similar containers of heading 4202, it is designed for carrying children.</p> <p>See also the Explanatory Notes to the Harmonised System relating to heading 6307</p>

a The photographs are purely for information.

Status: Point in time view as at 04/06/2013.

Changes to legislation: There are currently no known outstanding effects for the Commission Regulation (EC) No 1529/1999. (See end of Document for details)



a The photographs are purely for information.

Textual Amendments

- F1** Substituted by [Commission Implementing Regulation \(EU\) No 441/2013 of 7 May 2013 amending or repealing certain regulations on the classification of goods in the Combined Nomenclature.](#)

Status:

Point in time view as at 04/06/2013.

Changes to legislation:

There are currently no known outstanding effects for the Commission Regulation (EC) No 1529/1999.