

Council Directive 98/57/EC of 20 July 1998 on the control of *Ralstonia solanacearum* (Smith) Yabuuchi et al.

---

**Status:** EU Directives are being published on this site to aid cross referencing from UK legislation. After IP completion day (31 December 2020 11pm) no further amendments will be applied to this version.

---

## [<sup>F1</sup>ANNEX II

### TEST SCHEME FOR DIAGNOSIS, DETECTION AND IDENTIFICATION OF *RALSTONIA SOLANACEARUM* (SMITH) YABUUCHI *ET AL.*

---

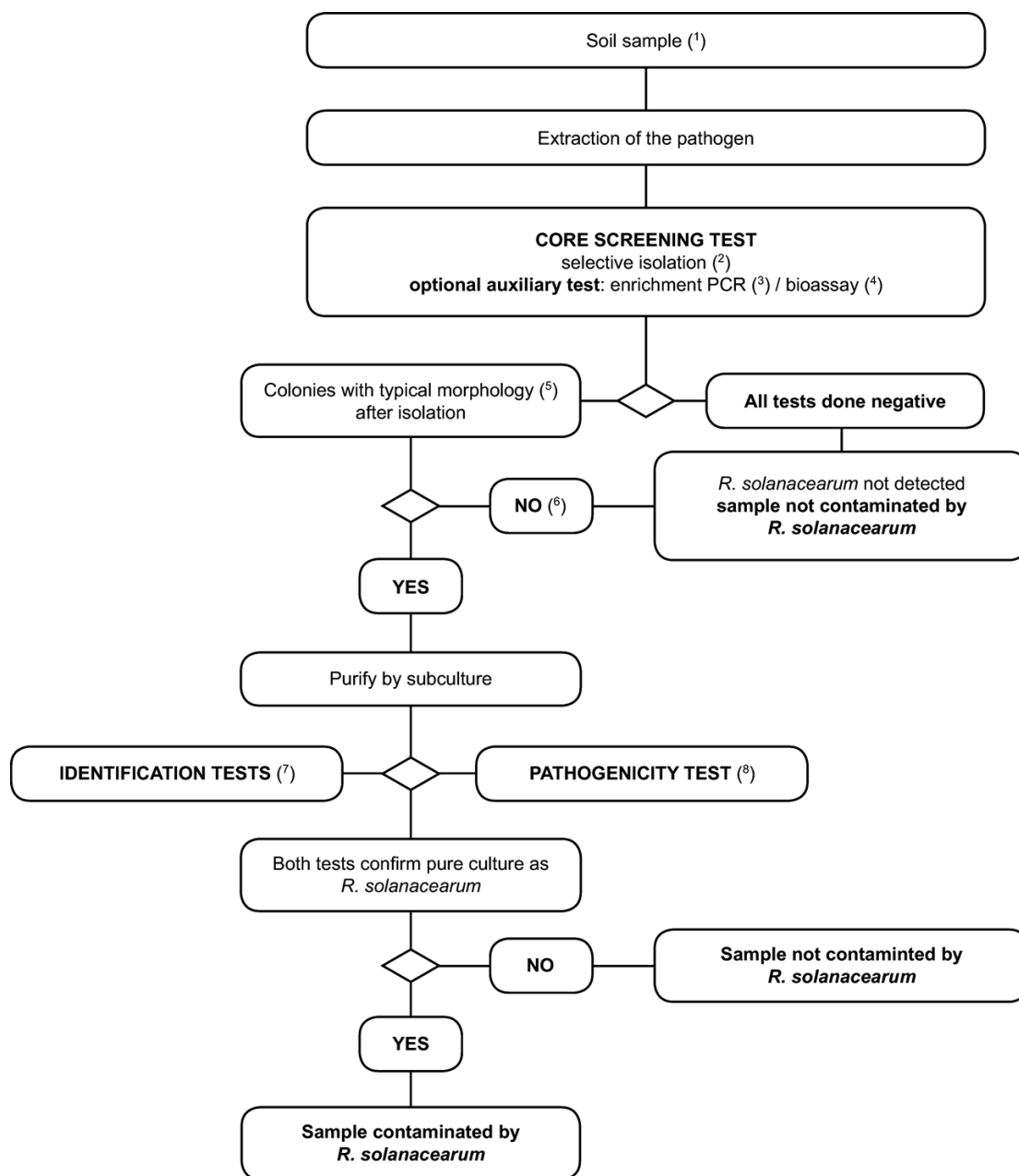
#### Textual Amendments

- F1** Substituted by [Commission Directive 2006/63/CE of 14 July 2006 amending Annexes II to VII to Council Directive 98/57/EC on the control of \*Ralstonia solanacearum\* \(Smith\) Yabuuchi et al.](#)

#### SECTION V

1. Scheme for detection and identification of *R. solanacearum* in soil]

**Status:** EU Directives are being published on this site to aid cross referencing from UK legislation. After IP completion day (31 December 2020 11pm) no further amendments will be applied to this version.



(1) See Section V.2.1. for recommended sampling procedures.

(2) The selective isolation test is described in Section VI.A.4.

(3) Enrichment PCR methods are described in Section VI.A.4.2 and Section VI.A.6.

(4) The bioassay is described in Section VI.A.9.

(5) Typical colony morphology is described in Section II.3.d.

(6) Culturing can fail due to competition or inhibition by saprophytic bacteria. If high saprophyte populations are suspected to affect the reliability of the isolation, then repeat the isolation tests after further dilution of the sample.

(7) Reliable identification of pure presumptive *R. solanacearum* cultures is achieved using the tests described in Section VI.B.

(8) The pathogenicity test is described in Section VI.C.